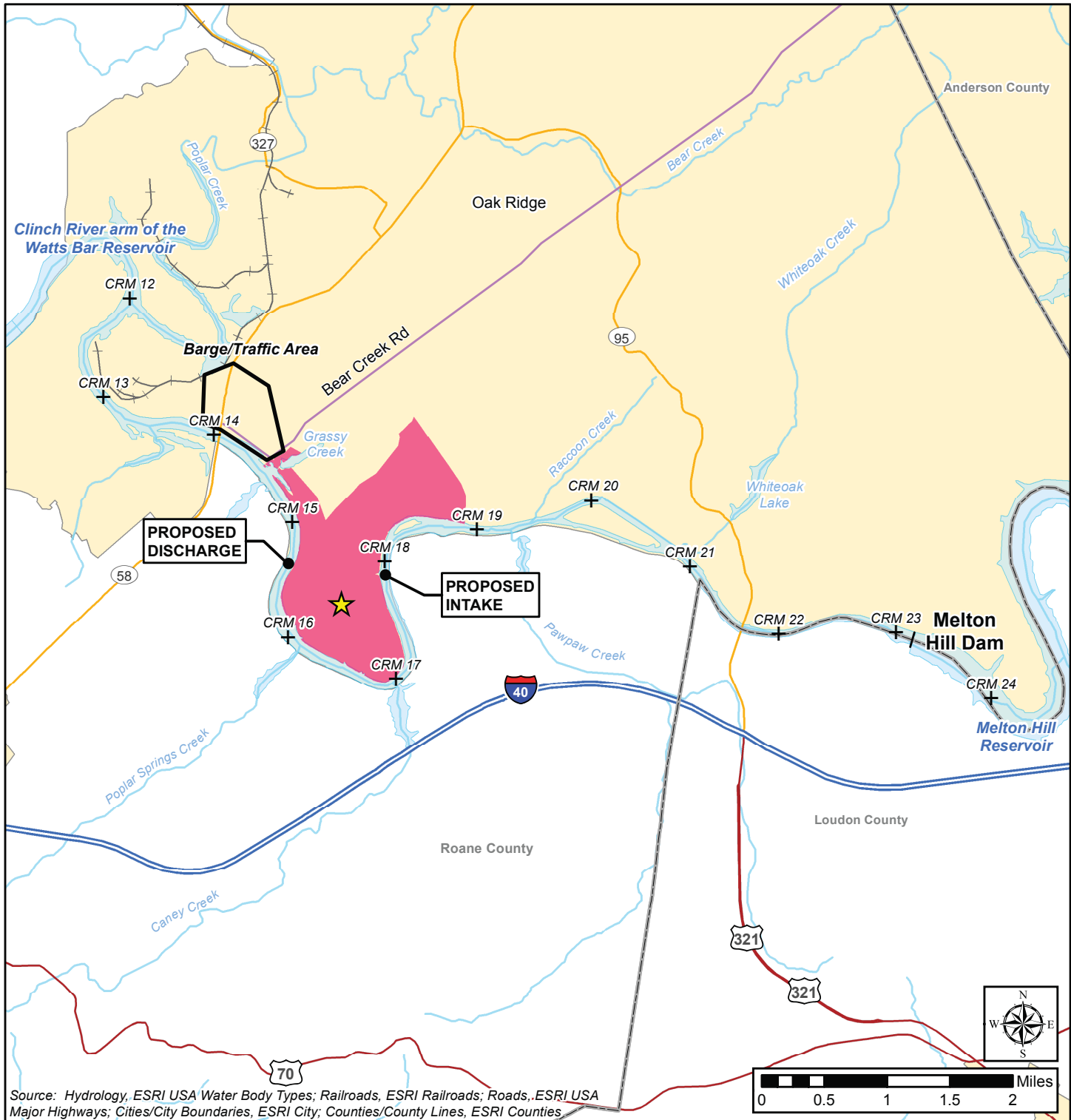


Clinch River Nuclear Site
Early Site Permit Application
Part 3, Environmental Report

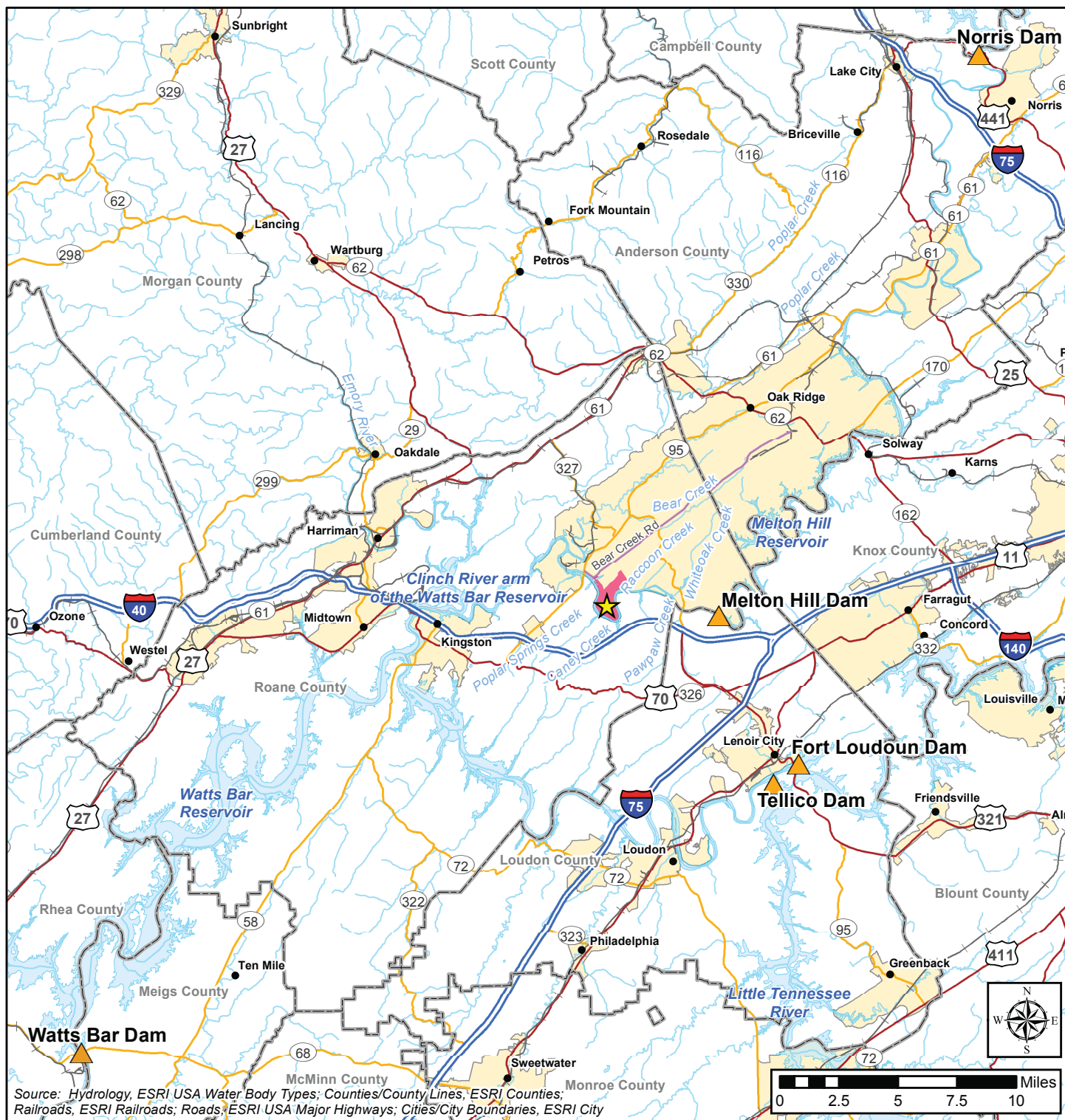


Legend

- | | | | |
|----------------------------------|-----------------------------------|------------------------|-----------------------------|
| ★ CRN Site Center Point | Light Blue Box Rivers and Lakes | Blue Line Interstate | Purple Line Bear Creek Road |
| + Clinch River Mile | Yellow Box Town/City Boundaries | Red Line Highway | |
| Pink Box CRN Site | Grey Box Counties | Orange Line Major Road | |
| Black Outline Barge/Traffic Area | Black Line with Crosses Railroads | | |

Figure 2.3.1-1. CRN Site Vicinity Water Resources

Clinch River Nuclear Site
Early Site Permit Application
Part 3, Environmental Report



Legend

- | | | |
|-----------------------|----------------------|-----------------|
| CRN Site Center Point | Rivers and Lakes | Interstate |
| Dam | City/Town Boundaries | Highway |
| City | Counties | Major Road |
| CRN Site | Railroads | Bear Creek Road |

Figure 2.3.1-2. CRN Site Regional Water Resources

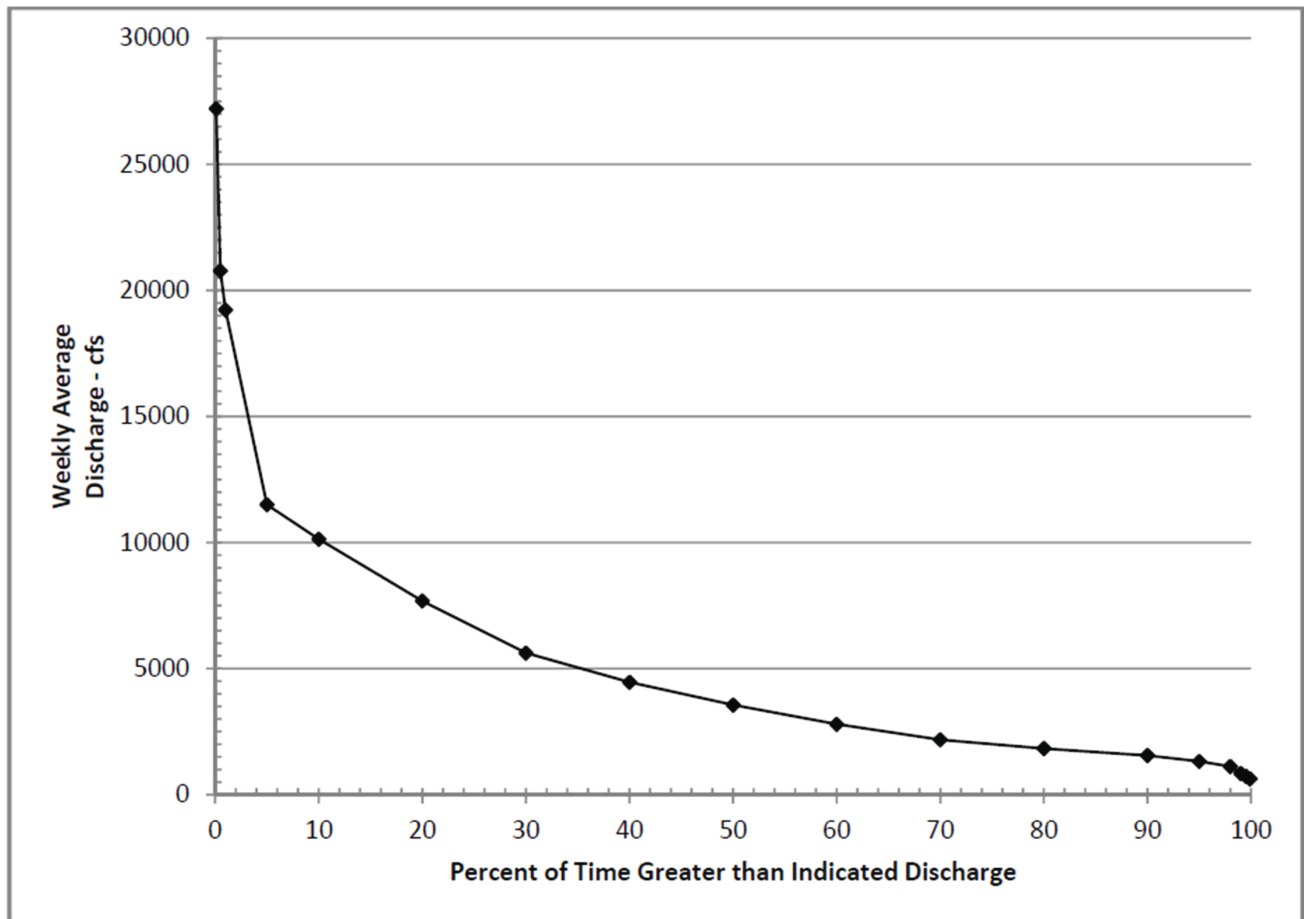


Figure 2.3.1-3. Melton Hill Dam Weekly Discharge Frequency

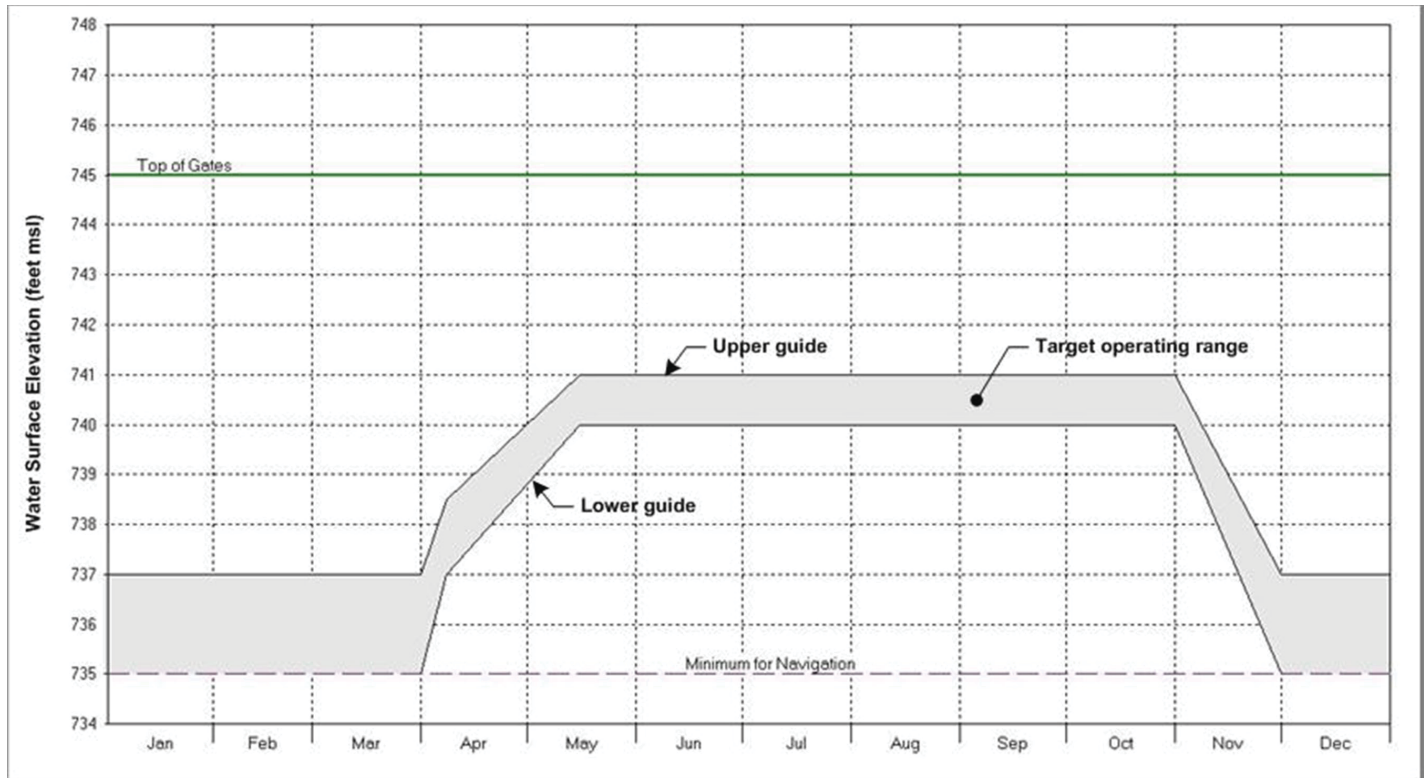


Figure 2.3.1-4. Operating Guide for Headwater Elevation at Watts Bar Dam

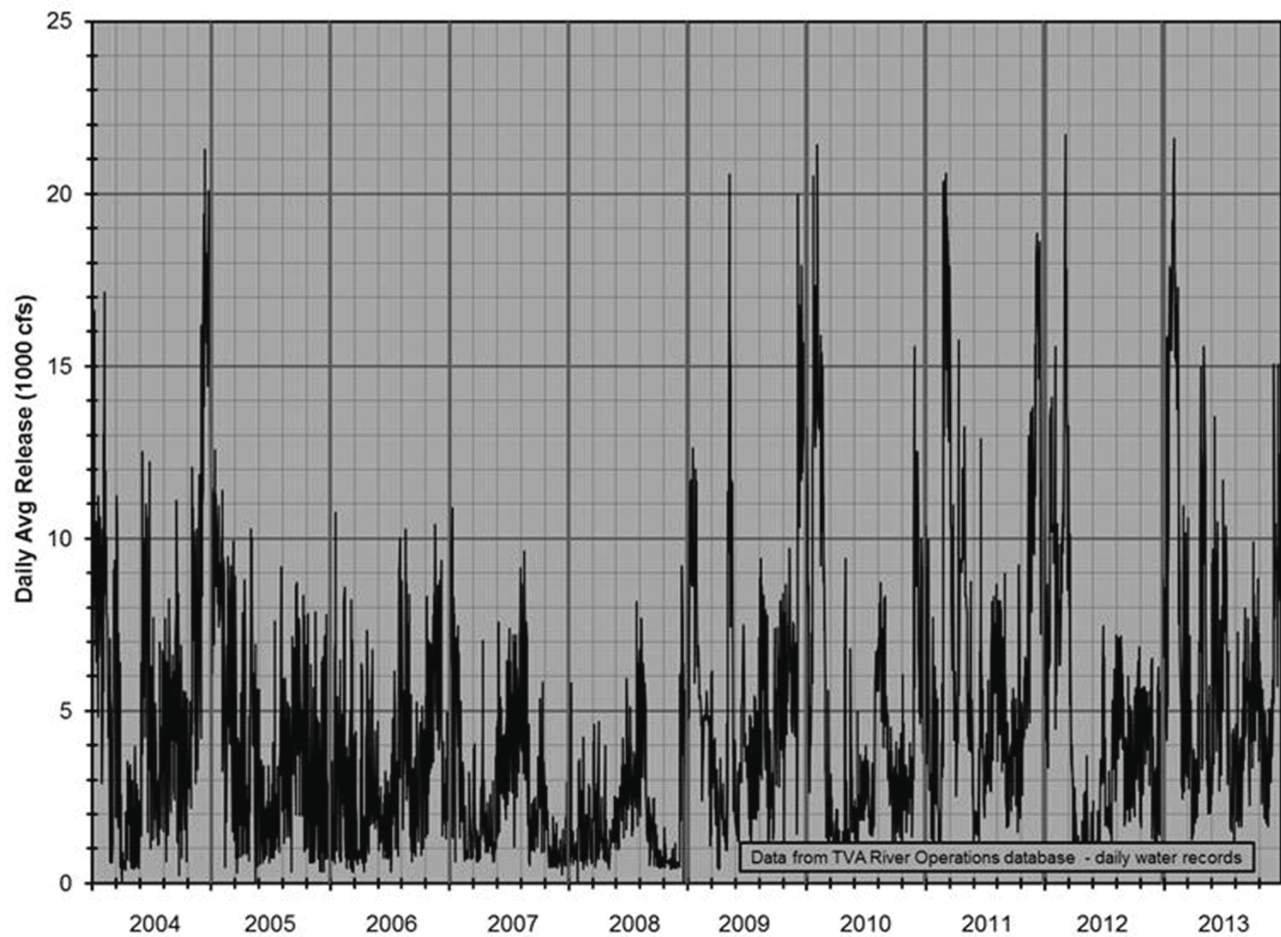


Figure 2.3.1-5. Daily Average Release from Melton Hill Dam

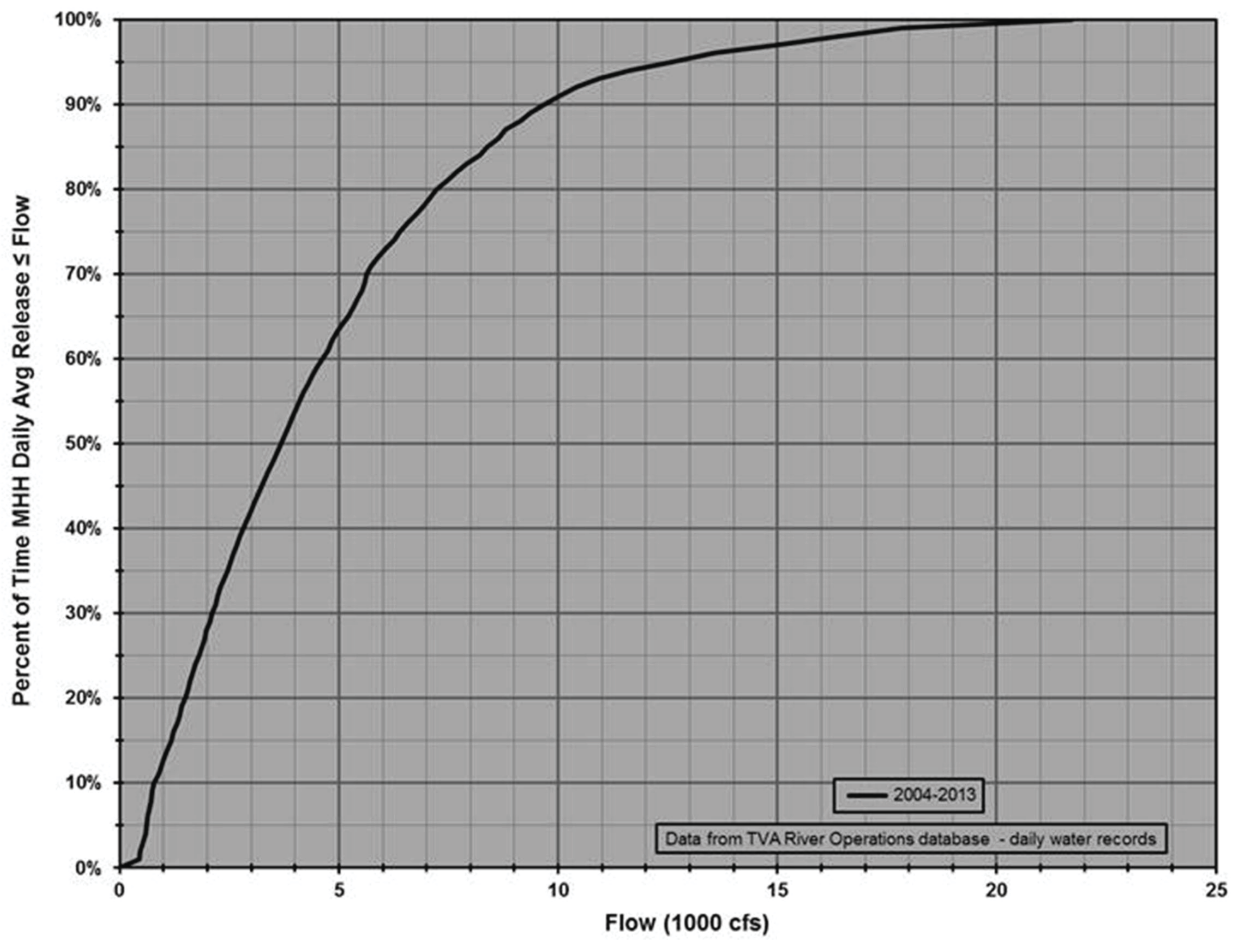


Figure 2.3.1-6. Percentile for Daily Average Release from Melton Hill Dam

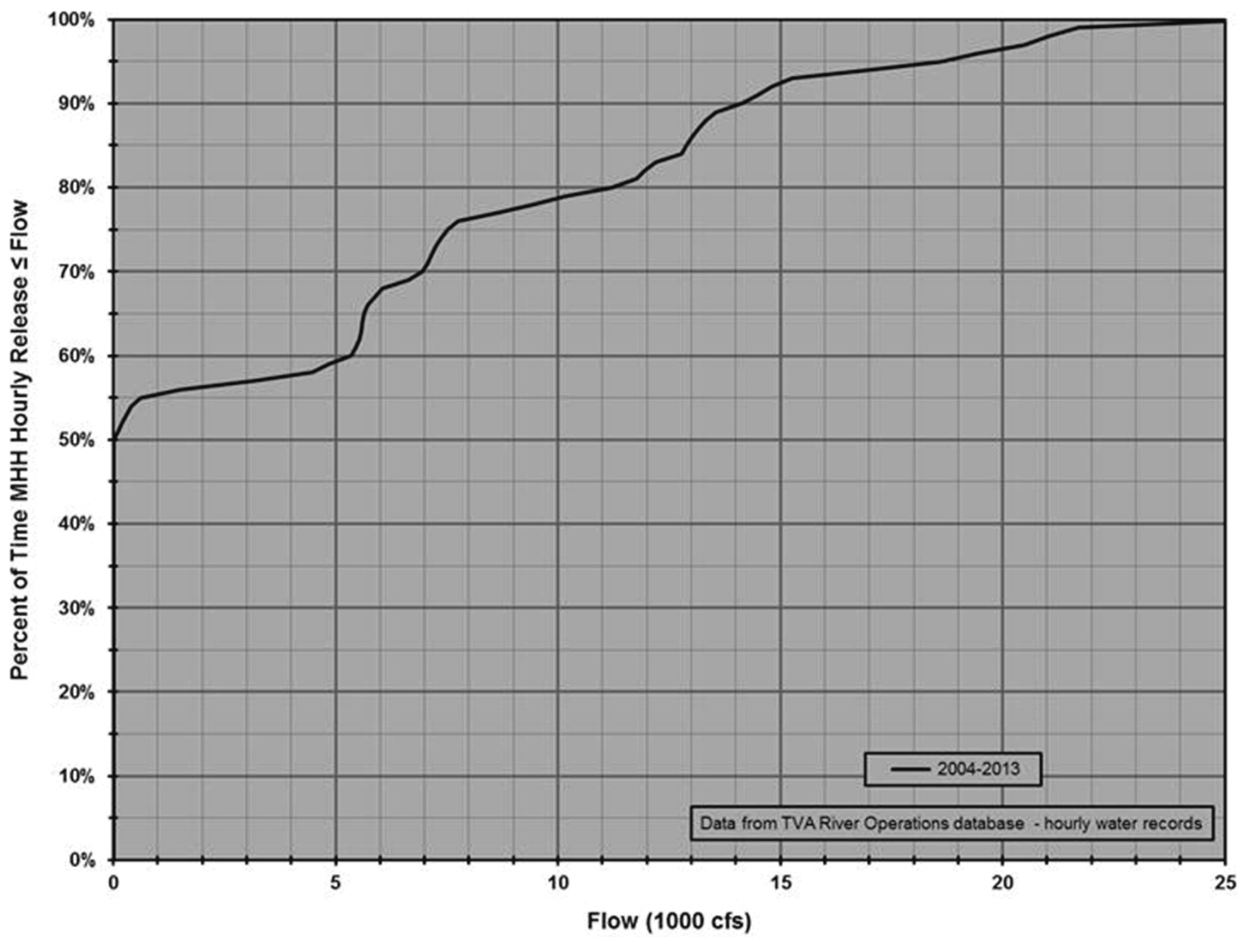


Figure 2.3.1-7. Percentile for Hourly Average Release from Melton Hill Dam

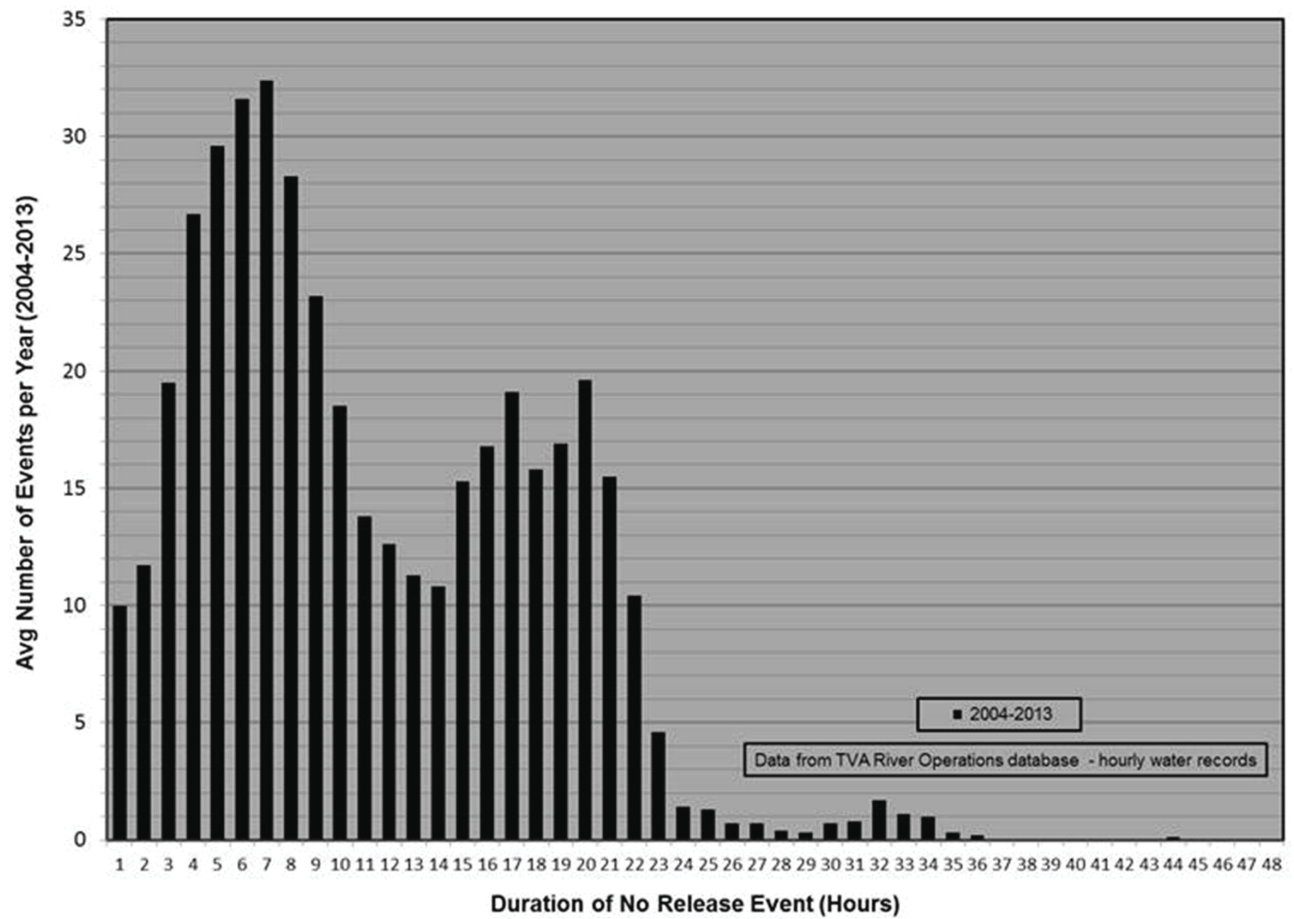


Figure 2.3.1-8. Average Annual Frequency of No Release Events from Melton Hill Dam

Clinch River Nuclear Site
Early Site Permit Application
Part 3, Environmental Report

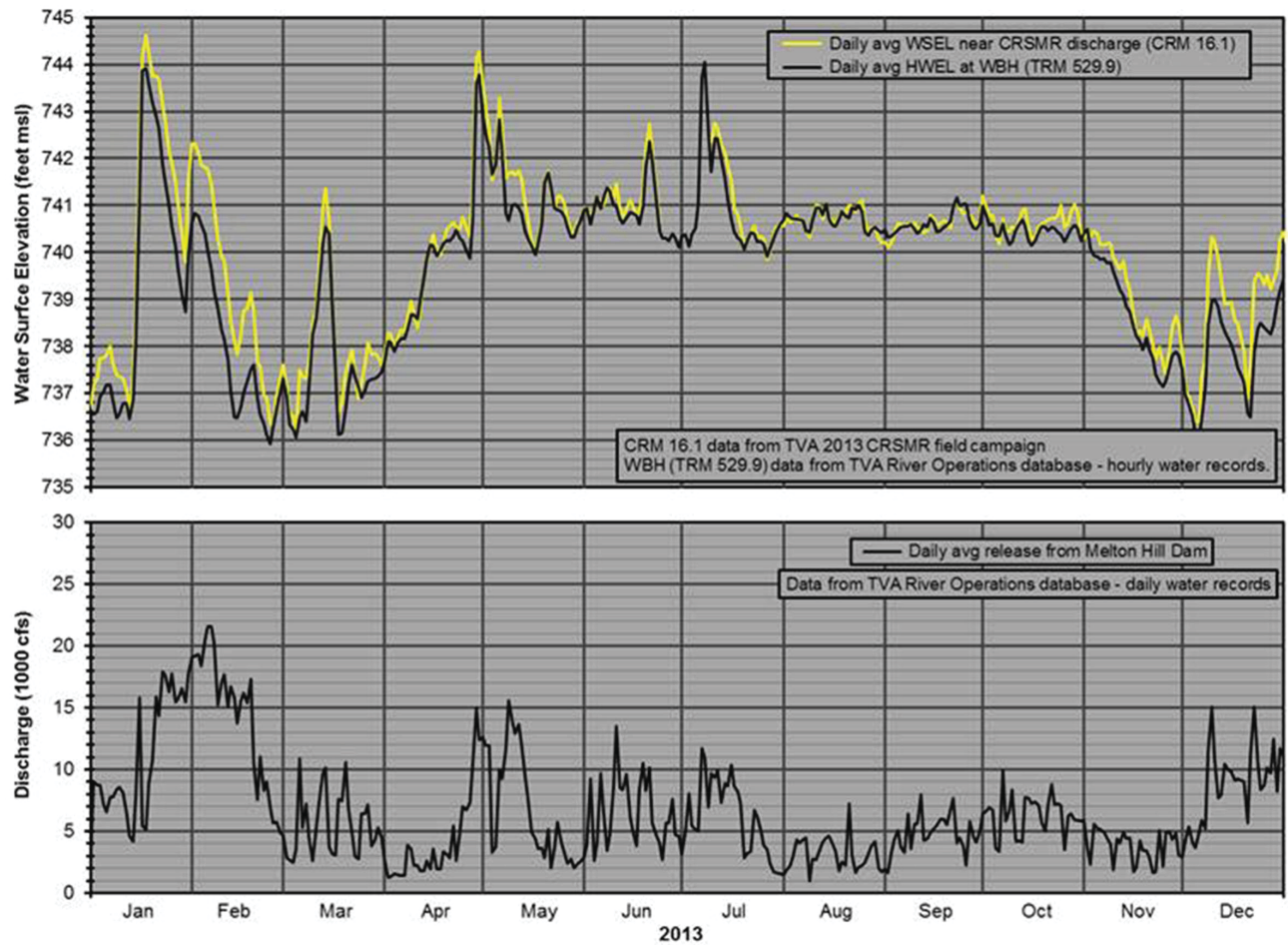


Figure 2.3.1-9. WSEL Measurements at CR SMR and WBH,
and Discharge Measurements at Melton Hill Dam

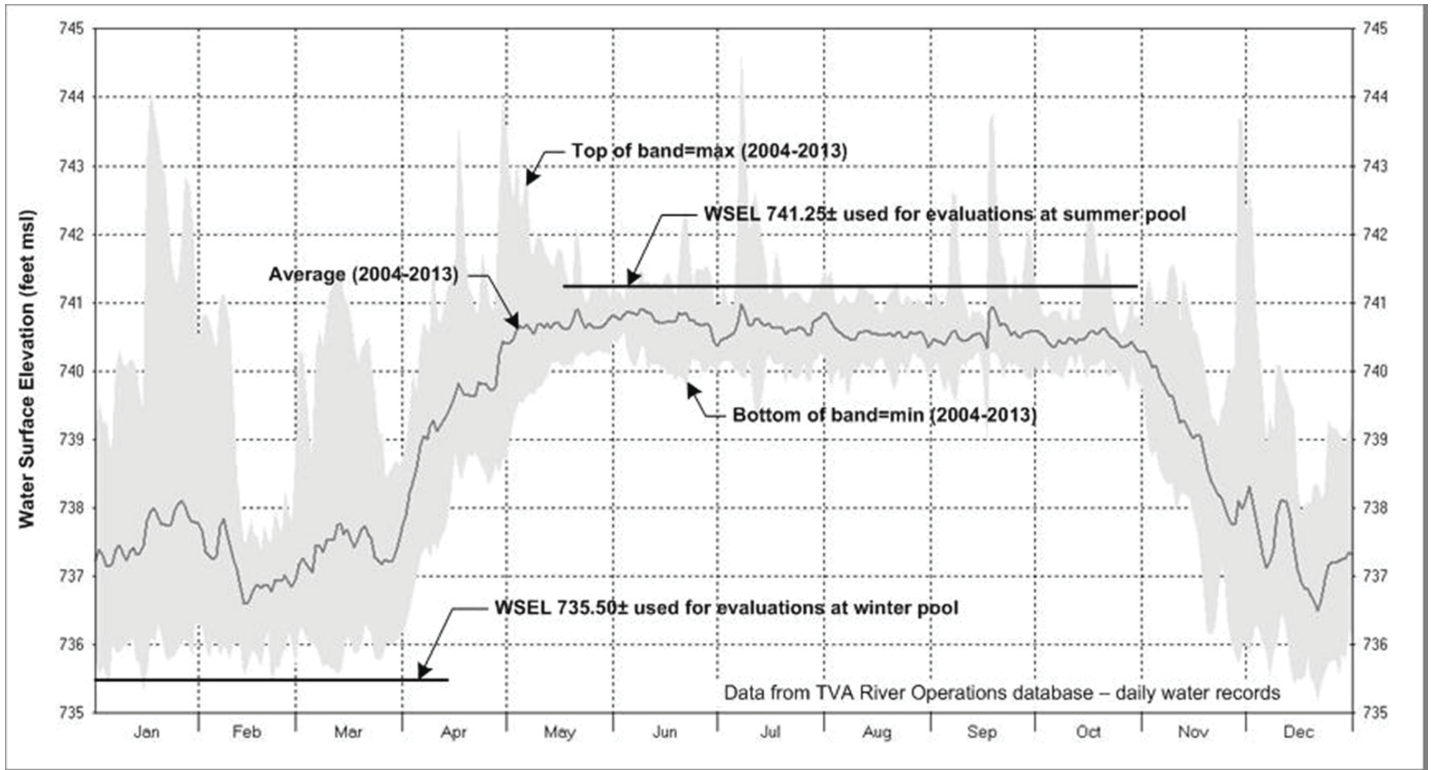


Figure 2.3.1-10. Headwater Elevation at Watts Bar Dam, Showing Max, Min, and Average Values of Daily Midnight Readings, 2004-2013

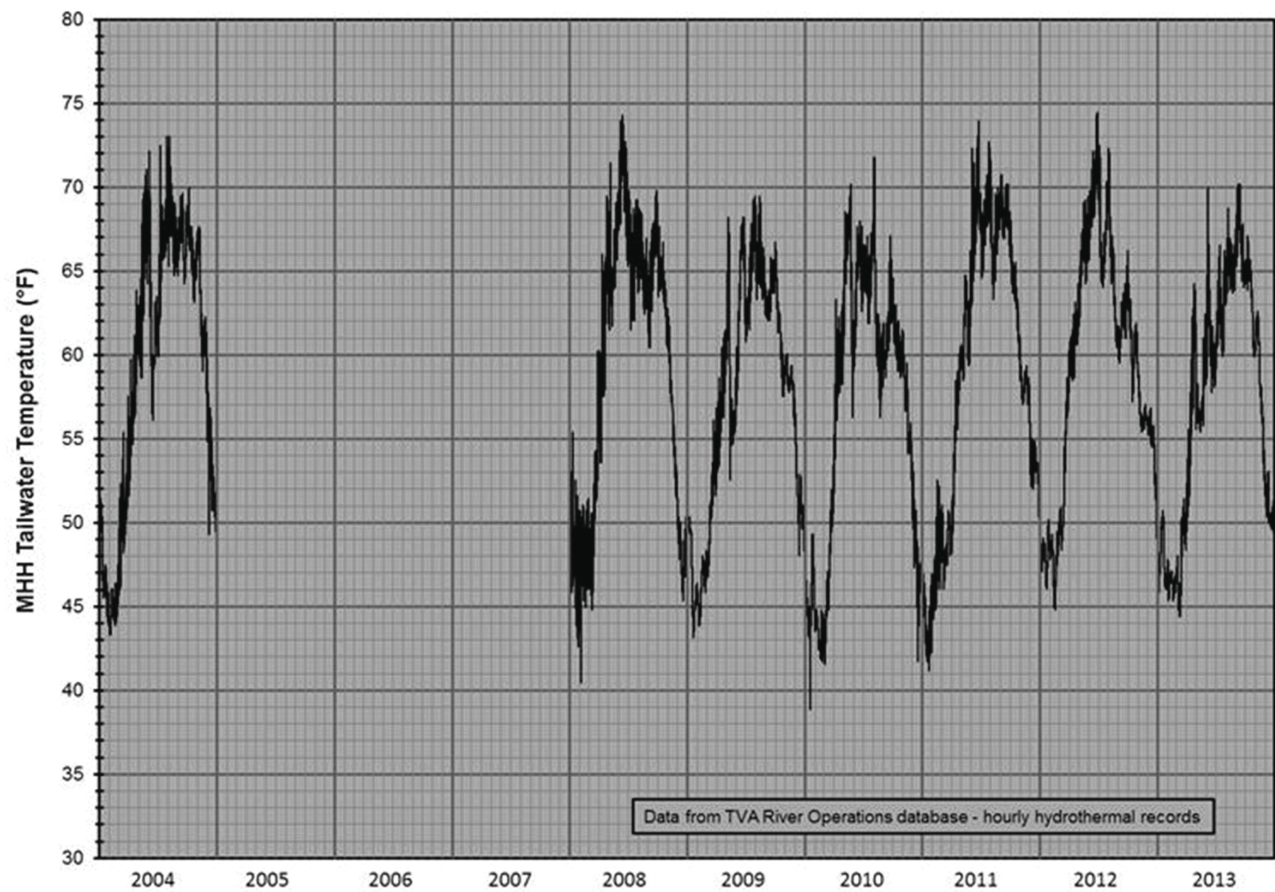


Figure 2.3.1-11. Hourly Water Temperature for Tailwater Below Melton Hill Dam

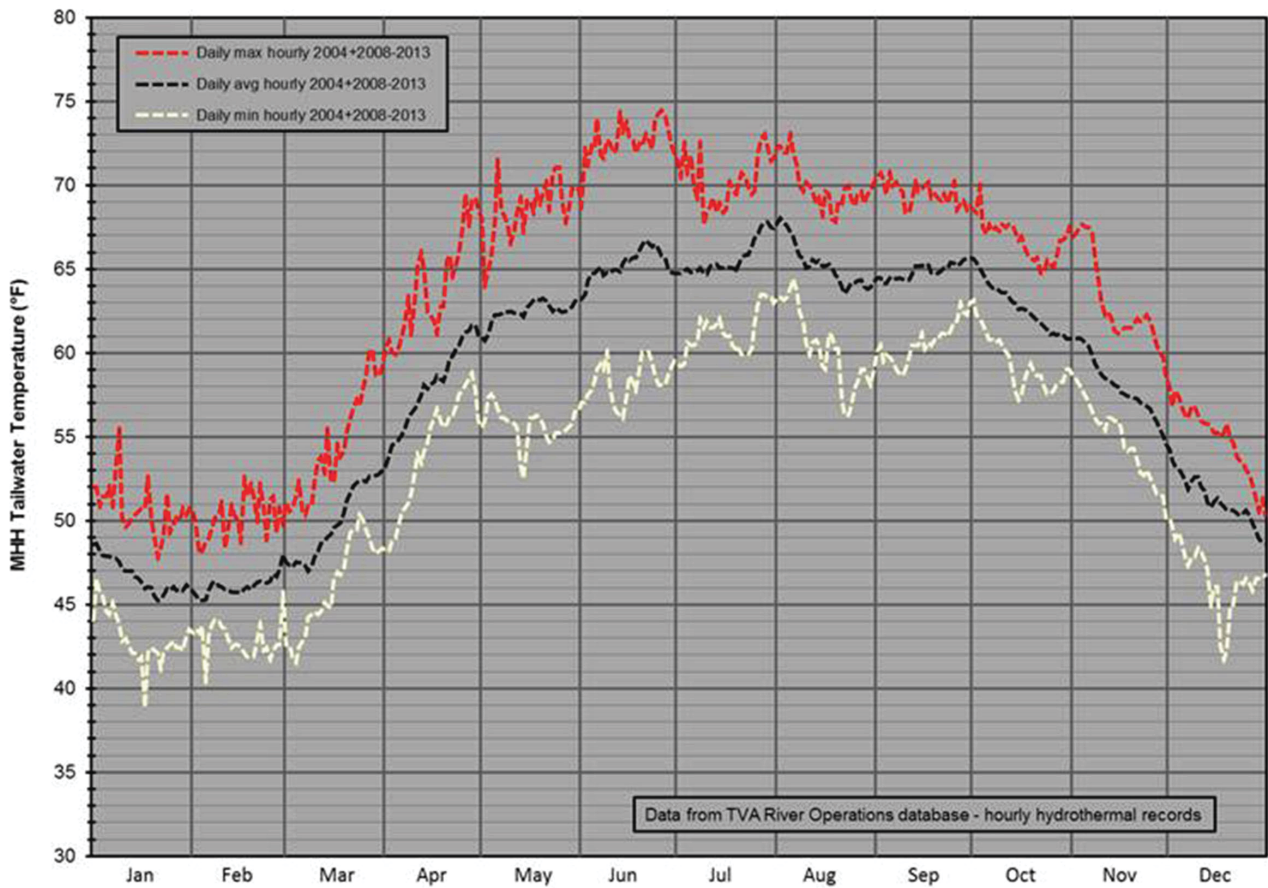


Figure 2.3.1-12. Daily Maximum, Minimum, and Average Hourly Water Temperature for Tailwater Below Melton Hill Dam

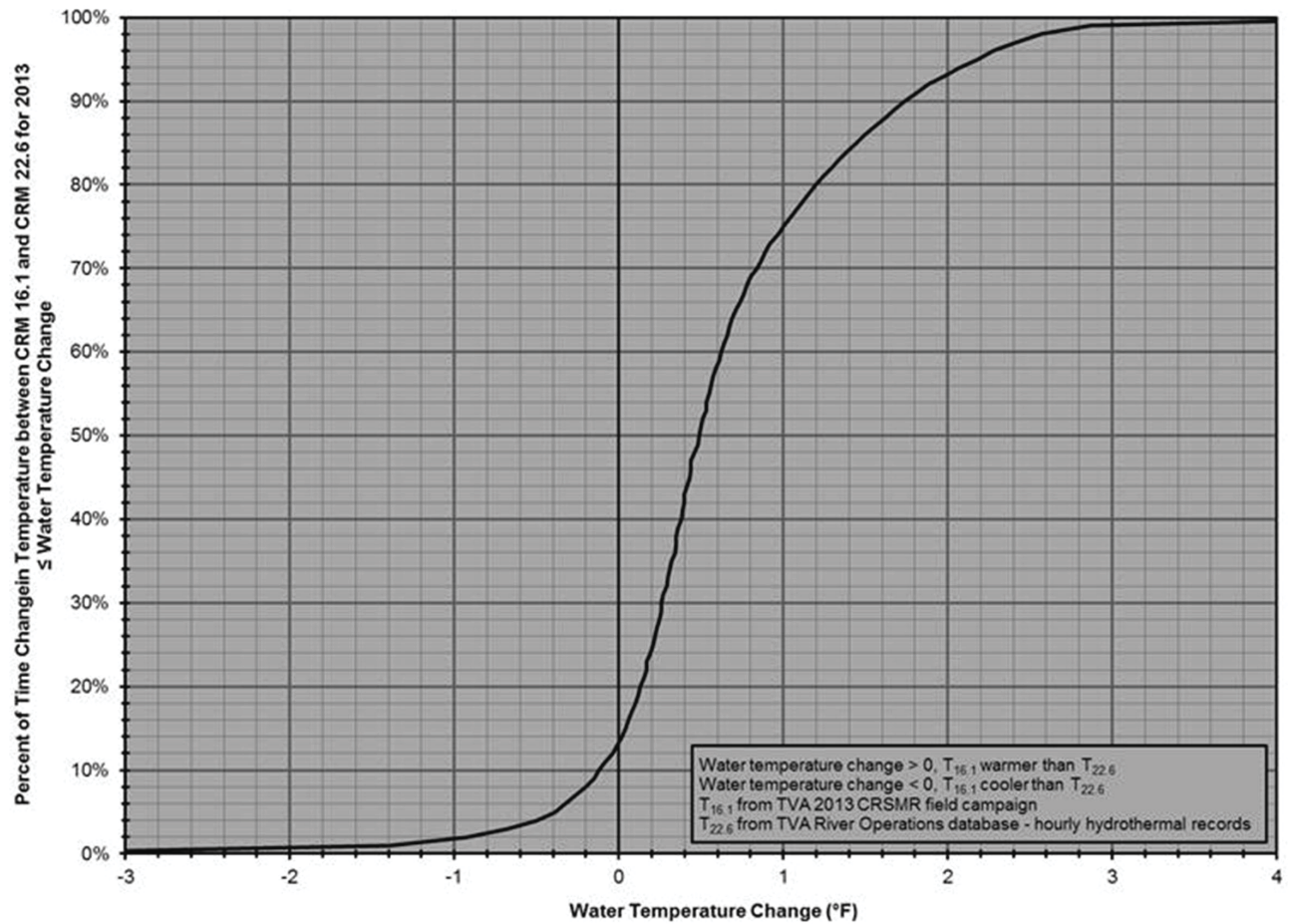
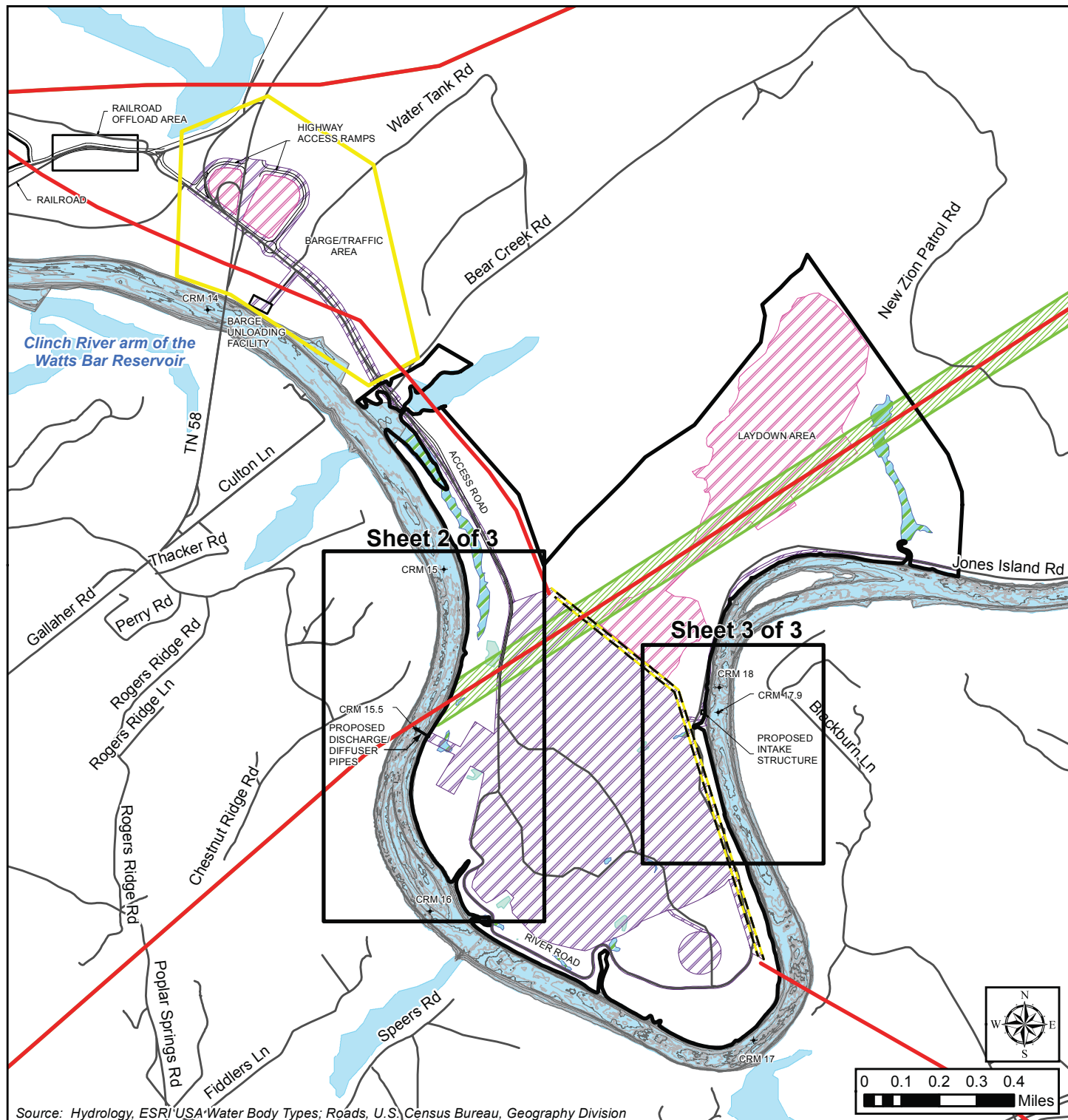


Figure 2.3.1-13. Percentile for Change in Hourly Water Temperature between CRM 16.1 and CRM 22.6/MHH Tailwater

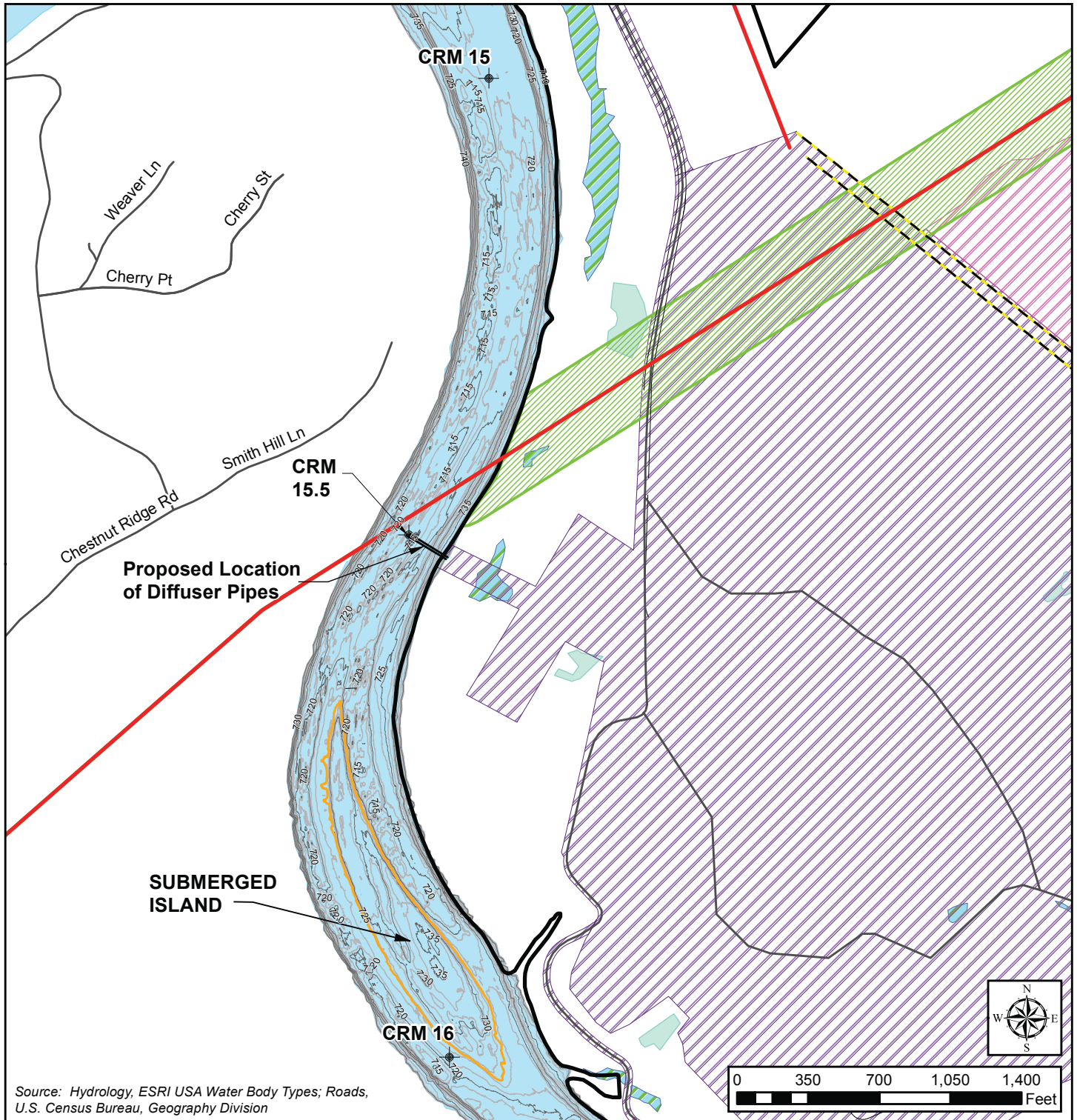
Clinch River Nuclear Site
Early Site Permit Application
Part 3, Environmental Report



Legend

CRN Site	Wetland	Barge/Traffic Area	Rivers and Lakes
Permanently Cleared Areas	Transmission Line	Bathymetry Contours (Range: 709-743 feet)	Local Roads
Temporary Cleared Areas	500 kV Transmission Line Right-of-Way	Approximate Proposed 161 kV Transmission Line Relocation	
Ponds			

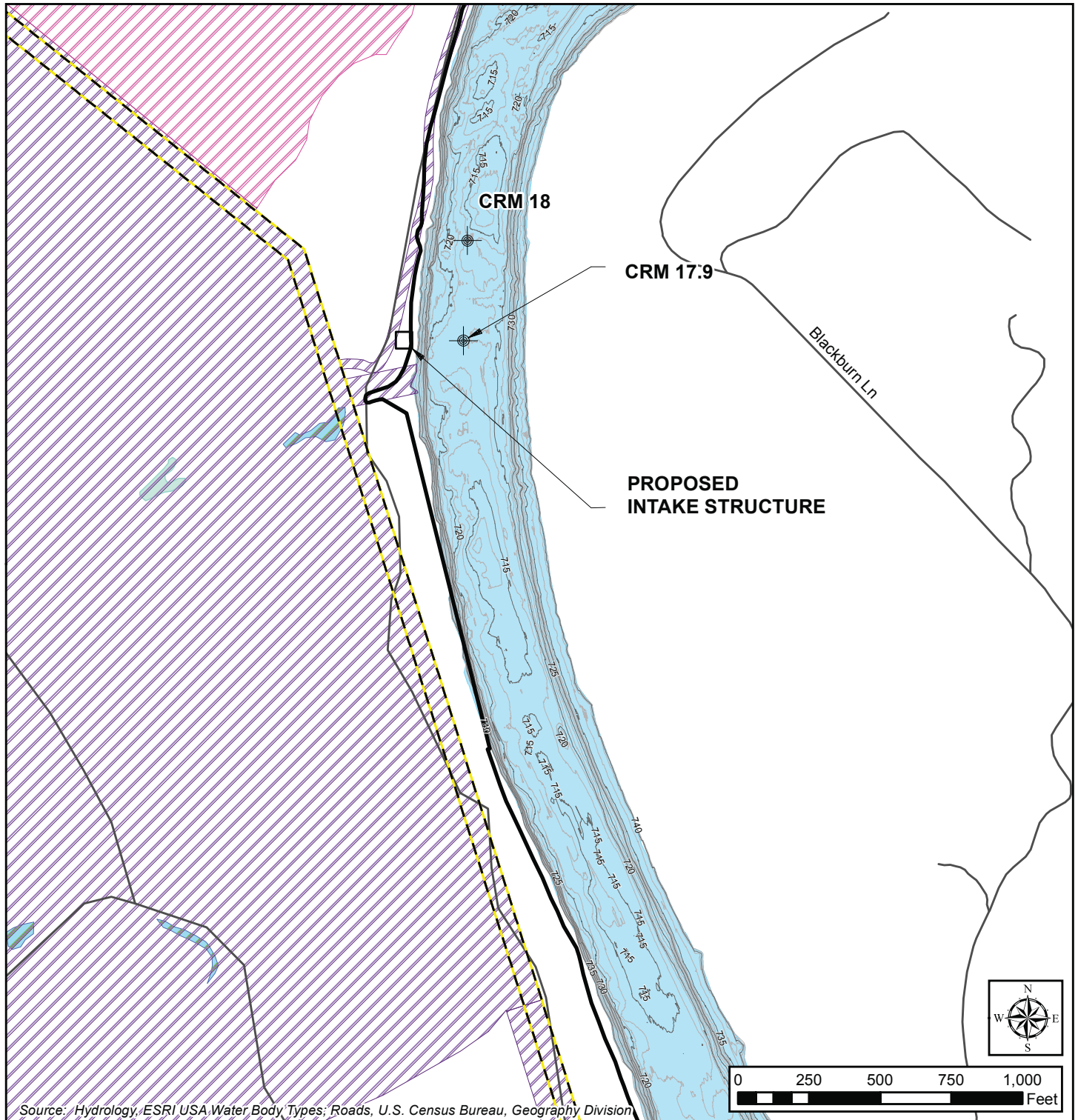
Figure 2.3.1-14. CRN Site Bathymetry (Sheet 1 of 3)



Legend

- | | | | |
|---------------------------|---------------------------------------|--|-------------|
| CRN Site | Wetland | Bathymetry Contours (Range: 709-743 feet) | Local Roads |
| Permanently Cleared Areas | Transmission Line | Approximate Proposed 161 kV Transmission Line Relocation | |
| Temporary Cleared Areas | 500 kV Transmission Line Right-of-Way | Submerged Island | |
| Ponds | | Rivers and Lakes | |

Figure 2.3.1-14. CRN Site Bathymetry (Sheet 2 of 3)



Legend

- | | | |
|---------------------------|--|------------------|
| CRN Site | Bathymetry Contours (Range: 709-743 feet) | Rivers and Lakes |
| Permanently Cleared Areas | Approximate Proposed 161 kV Transmission Line Relocation | Local Roads |
| Temporary Cleared Areas | | |

Figure 2.3.1-14. CRN Site Bathymetry (Sheet 3 of 3)