

May 5, 2016

Mr. Ron Linton, Project Manager
US Nuclear Regulatory Commission
Decommissioning and Uranium Recovery Licensing Directorate
Division of Waste Management and Environmental Protection
Office of Federal and State Materials
Environmental Management Programs
11545 Rockville Pike
Rockville, MD 20852-278

**RE: 8MW37-A Monitor Well UCL Parameter Exceeding Upper Control Limits
Electronic Submission Only**

Dear Mr. Linton:

A routine biweekly sample of Well 8MW37-A exceeded two of the three Upper Control Limits (UCLs) on April 30, 2016. A confirmation sample was taken on May 1, 2016. This sample also exceeded two of the three UCLs, which confirmed the excursion status for well 8MW37-A. In accordance with permit requirements the sampling frequency has been increased to weekly, and will continue until 3 consecutive weekly samples indicate that no more than one UCL is exceeded.

The excursion status of 8MW37-A was reported by phone and email to Ron Linton of the U.S. NRC Office on May 2, 2016.

Corrective Actions implemented include turning on the following recovery wells; 8AS161-1 (236 feet to the northeast), 8 AT159-1(296 feet to the east), of 8MW37-A are being pumped at a combined rate of 12-16 gpm. The effects of these actions will continue to be monitored and adjusted as required until the two UCL parameters are below the established UCL for three consecutive weeks. Corrective actions taken appear to be working as the confirmation sample does show a downward trend for the UCL parameters.

Uranium One has provided NRC a map showing which recovery wells are currently being utilized to control the excursion in 8MW37-A has been included in Attachment 1 of this report.

Table 1 provides a copy of the analytical data confirming exceedance of the UCL parameters for 8MW37-A.

**Table 1: Summary of Monitor Well Results
Mine Unit 8
Monitor Well 8MW37-A**

SAMPLE DATE	CHLORIDE (UCL 13.6 mg/L)	CONDUCTIVITY (UCL 823 µmhos/cm)	ALKALINITY (UCL 121.3 mg/l)	pH	WATER LEVEL	URANIUM mg/l
4/14/16	18.8	949	210.9		4464.4	
4/25/16	18.6	1064	257.5			
4/26/16	19.1	978	257.3			
4/27/16	18.4	1097	256.2			
4/28/16	20.0	1065	266.0			
4/29/16	21.4	1058	264.9	8.1	4448.6	
4/30/16	20.1	1052	260.6		4446.1	0.39
5/1/16	18.8	969	223.9		4437.7	0.31
5/5/16	20.2	973	213.7		4449.1	0.42

Please contact by phone at (307) 233-6330 or email at scott.schierman@uranium1.com if you have any questions or need additional information regarding this issue.

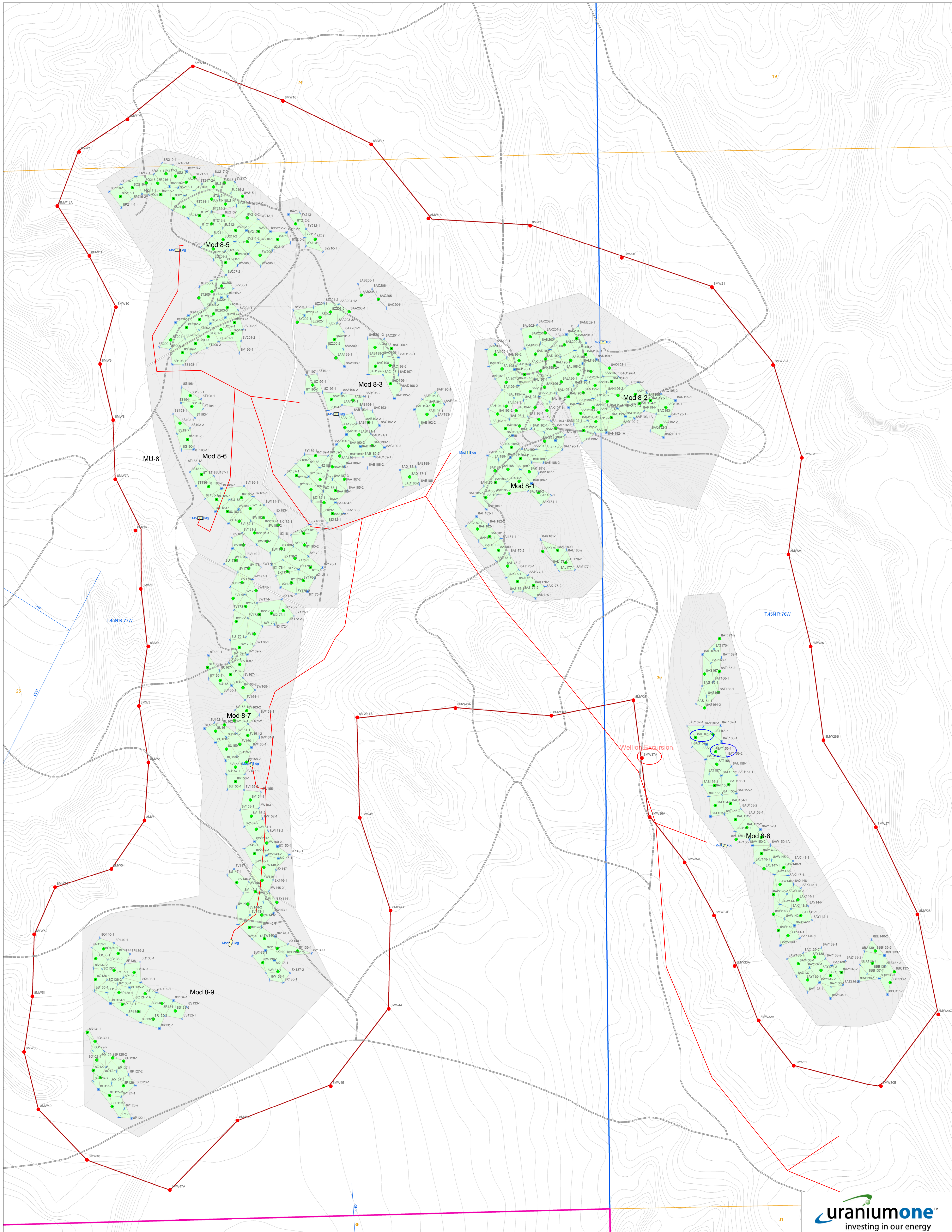
Sincerely,



Scott Schierman
HSE Manager

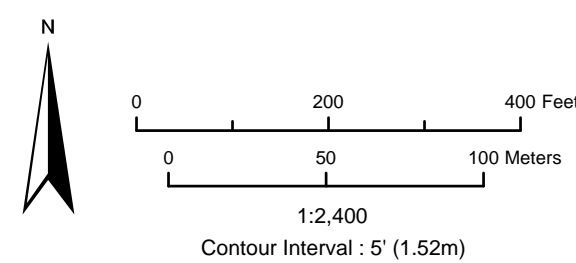
Attachment 1

Mine Unit 8 Map



Legend

- Wells
- Monitor
- Injection
- Recovery
- Site Facilities
- Permit Boundary
- U1 Trunkline
- Overhead Power
- Roads



**Willow Creek Project
Mine Unit 8
Overview**

Date: 3/20/2014		By: Tony Meier		Checked By:	
Rev No.	Description	Date	By	Figure:	