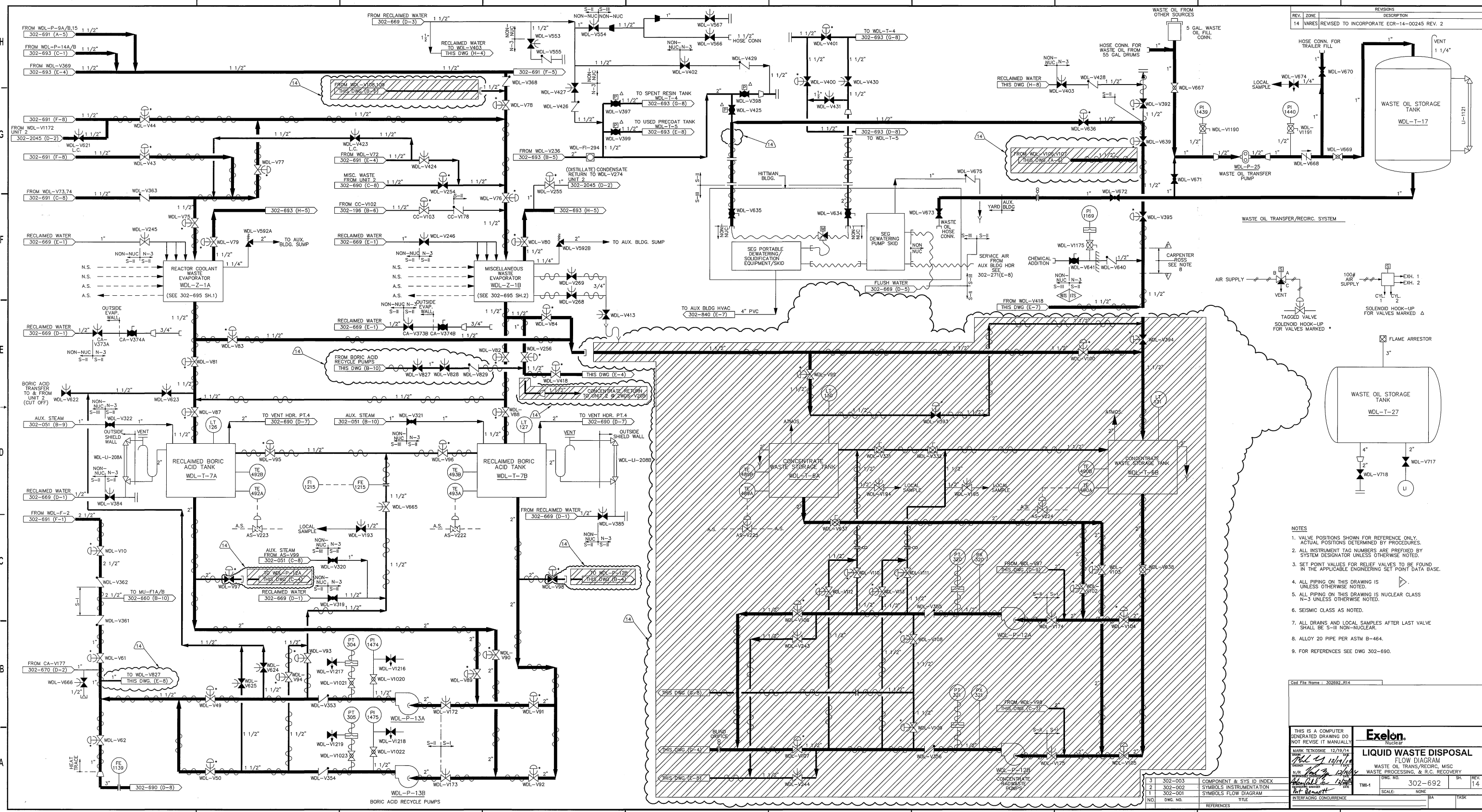


REV.	ZONE	DESCRIPTION
14	VARIES	REVISED TO INCORPORATE ECR-14-00245 REV. 2



- NOTES
1. VALVE POSITIONS SHOWN FOR REFERENCE ONLY. ACTUAL POSITIONS DETERMINED BY PROCEDURES.
 2. ALL INSTRUMENT TAG NUMBERS ARE PREFIXED BY SYSTEM DESIGNATOR UNLESS OTHERWISE NOTED.
 3. SET POINT VALUES FOR RELIEF VALVES TO BE FOUND IN THE APPLICABLE ENGINEERING SET POINT DATA BASE.
 4. ALL PIPING ON THIS DRAWING IS UNLESS OTHERWISE NOTED.
 5. ALL PIPING ON THIS DRAWING IS NUCLEAR CLASS N-3 UNLESS OTHERWISE NOTED.
 6. SEISMIC CLASS AS NOTED.
 7. ALL DRAINS AND LOCAL SAMPLES AFTER LAST VALVE SHALL BE S-III NON-NUCLEAR.
 8. ALLOY 20 PIPE PER ASTM B-464.
 9. FOR REFERENCES SEE DWG 302-690.

Conf File Name : 302692_R14

THIS IS A COMPUTER GENERATED DRAWING DO NOT REVISE IT MANUALLY		Exelon LIQUID WASTE DISPOSAL WASTE OIL TRANSFER/RECIRC. MISC WASTE PROCESSING & R.C. RECOVERY	DWG. NO. 302-692	SH. 14	REV.
DATE: 12/19/14	BY: [Signature]		TMS-1	SCALE: NONE	BA

NO.	DWG. NO.	REFERENCES	TITLE
3	302-003		COMPONENT & SYS ID INDEX
2	302-002		SYMBOLS INSTRUMENTATION
1	302-001		SYMBOLS FLOW DIAGRAM