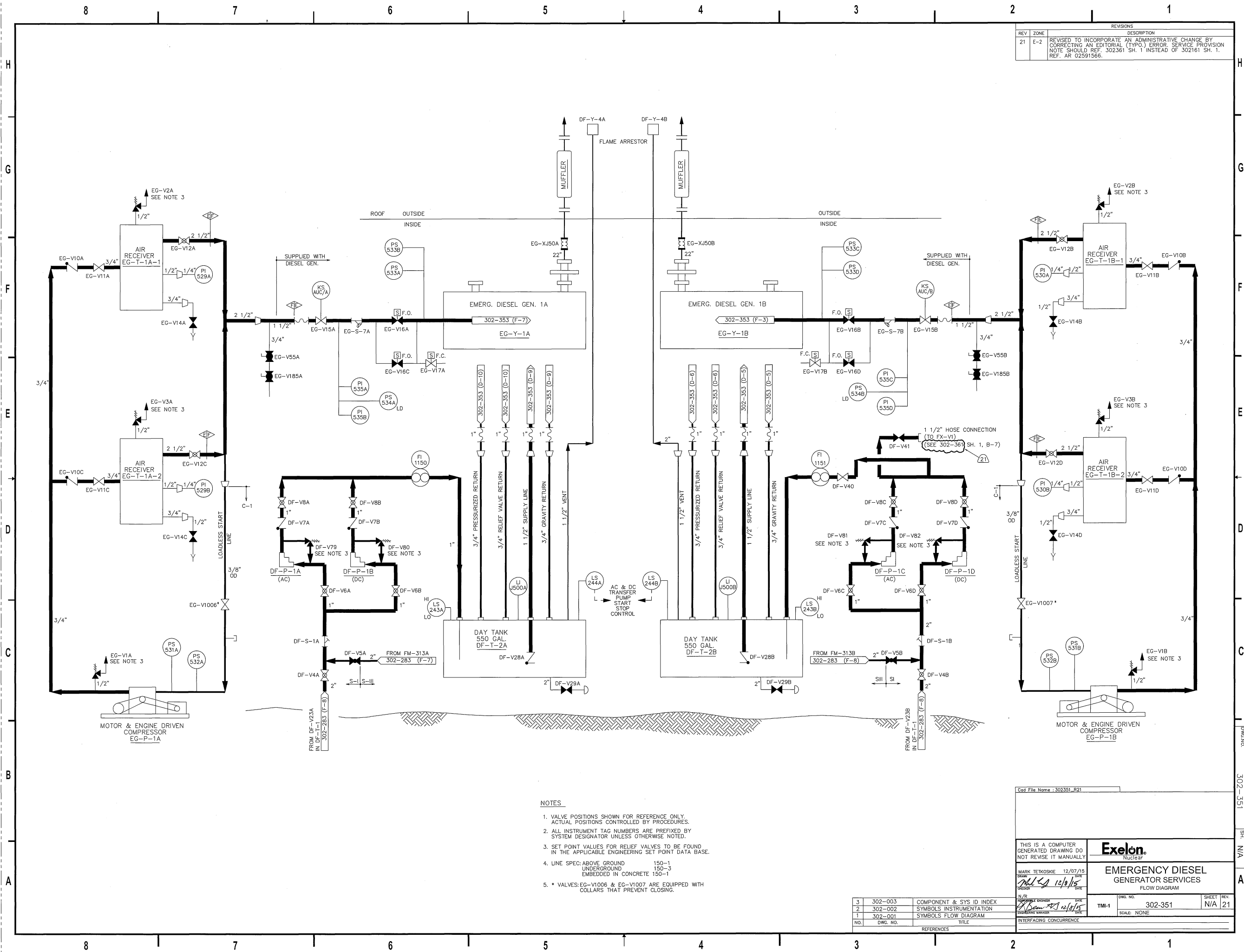


REV	ZONE	DESCRIPTION
21	E-2	REVISED TO INCORPORATE AN ADMINISTRATIVE CHANGE BY CORRECTING AN EDITORIAL (TYPO) ERROR. SERVICE PROVISION NOTE SHOULD REF. 302361 SH. 1 INSTEAD OF 302161 SH. 1. REF. AR 02591566.



- NOTES**
1. VALVE POSITIONS SHOWN FOR REFERENCE ONLY. ACTUAL POSITIONS CONTROLLED BY PROCEDURES.
 2. ALL INSTRUMENT TAG NUMBERS ARE PREFIXED BY SYSTEM DESIGNATOR UNLESS OTHERWISE NOTED.
 3. SET POINT VALUES FOR RELIEF VALVES TO BE FOUND IN THE APPLICABLE ENGINEERING SET POINT DATA BASE.
 4. LINE SPEC: ABOVE GROUND 150-1
UNDERGROUND 150-3
EMBEDDED IN CONCRETE 150-1
 5. * VALVES: EG-V1006 & EG-V1007 ARE EQUIPPED WITH COLLARS THAT PREVENT CLOSING.

NO.	DWG. NO.	TITLE
3	302-003	COMPONENT & SYS ID INDEX
2	302-002	SYMBOLS INSTRUMENTATION
1	302-001	SYMBOLS FLOW DIAGRAM

Cad File Name : 302351_R21

THIS IS A COMPUTER GENERATED DRAWING DO NOT REWIRE IT MANUALLY

Exelon
Nuclear

MARK TETKOSKIE 12/07/15
DATE
12/8/15
DATE

EMERGENCY DIESEL GENERATOR SERVICES
FLOW DIAGRAM

DMG. NO. 302-351 SHEET REV. N/A 21

TMI-1 SCALE: NONE

INTERFACING CONCURRENCE

302-351 SH. N/A A