



## Illinois Department of Natural Resources

One Natural Resources Way Springfield, Illinois 62702-1271  
[www.dnr.illinois.gov](http://www.dnr.illinois.gov)

Bruce Rauner, Governor  
Wayne A. Rosenthal, Acting Director

02 September 2015

Darlene Murphy  
Zion Solutions  
101 Shiloh Boulevard  
Zion, IL 60099

Dear Ms. Murphy:

I wanted to send you a special note of appreciation for your help with management and conservation of the significant natural resources of the Lake Michigan Lake Plain. Your continued support of the Great Lakes Restoration Initiative and help in facilitating access for our invasive species Strike Team has been invaluable. I hope we can make arrangements in the months to come for continued exotic species control efforts in the unique dune habitats along the lakefront and areas adjacent to the Illinois Beach State Park. In addition, we have been able to establish an experimental Common Tern nesting colony at your facility. Unfortunately, the terns attempted to nest on Waukegan beach and all six nests were destroyed by predators. The colony ultimately abandoned due to human disturbance. We continue to view the Zion Solutions site as a viable nesting area and hope to continue the program in the future.

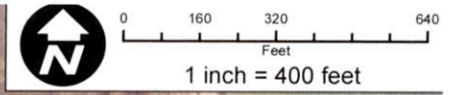
Again, thank you for all your help in allowing these important conservation initiatives to continue.

Sincerely,






A handwritten signature in cursive script that reads "Brad Semel".

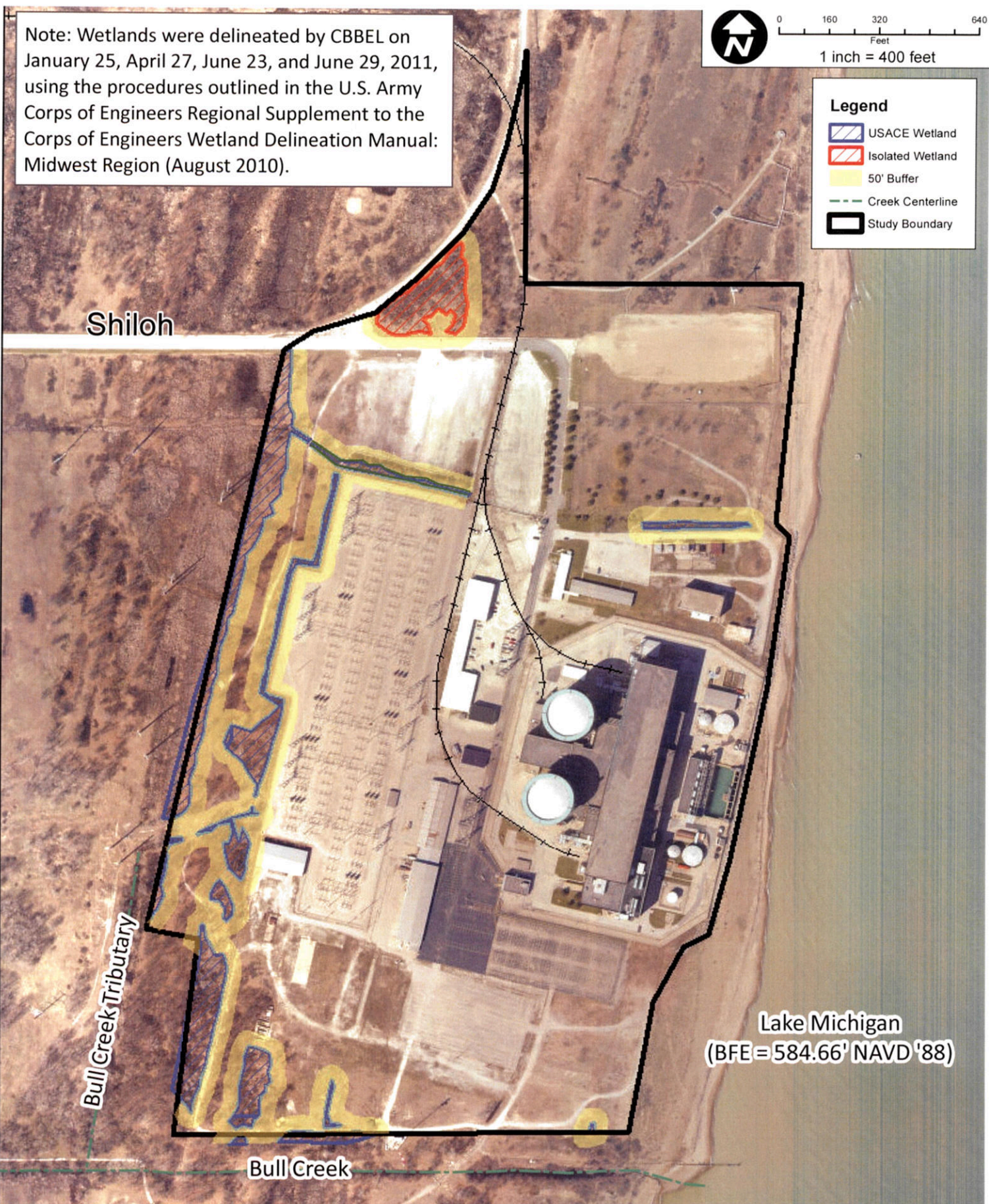
Brad Semel  
8916 Wilmot Road.  
Spring Grove, Il 60081  
[brad.semel@illinois.gov](mailto:brad.semel@illinois.gov)  
630-399-3242

Note: Wetlands were delineated by CBBEL on January 25, April 27, June 23, and June 29, 2011, using the procedures outlined in the U.S. Army Corps of Engineers Regional Supplement to the Corps of Engineers Wetland Delineation Manual: Midwest Region (August 2010).



**Legend**

-  USACE Wetland
-  Isolated Wetland
-  50' Buffer
-  Creek Centerline
-  Study Boundary



Path: N:\ZION\110016.00008\GIS\Exhibits\Zion.mxd

|  |   |                  |
|--|---|------------------|
| CLIENT:<br><br><h2 style="text-align: center;">ZION SOLUTIONS</h2> | TITLE:<br><br><h2 style="text-align: center;">Site Wetland Map</h2> | PROJ. NO. NUMBER |
|  |   | DATE: 00-00-00   |
|  |   | SHEET 1 OF 1     |
|  |   | DRAWING NO.      |

**CBB** CHRISTOPHER B. BURKE ENGINEERING, LTD.  
 9575 W. Higgins Road, Suite 600 • Rosemont, Illinois 60018 • (847) 823-0500

|       |      |            |           |
|-------|------|------------|-----------|
| DSGN. |      | SCALE:     | 1:0       |
| DWN.  |      | AUTHOR:    | JSG       |
| CHKD. |      | PLOT DATE: | 8/10/2011 |
| FILE: | Zion |            |           |

**EXH**