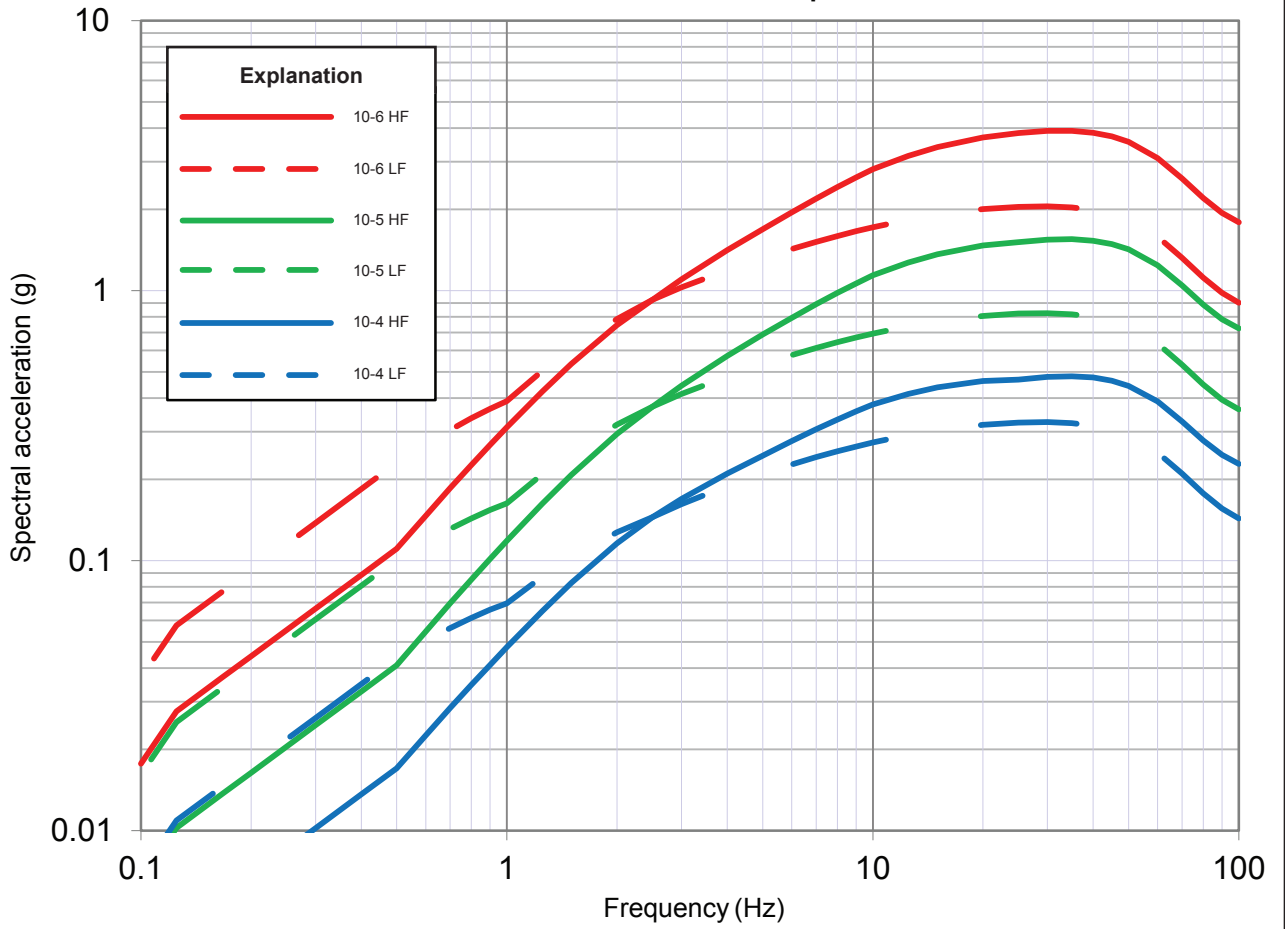


### Mean Rock HF and LF Spectra at Lee



WLS COL 2.5-2

WILLIAM STATES LEE III  
NUCLEAR STATION UNITS 1 & 2

High and Low Frequency Mean Spectra  
for MAFEs of  $10^{-4}$ ,  $10^{-5}$  and  $10^{-6}$

FIGURE 2.5.2-266a

Rev 8