

SECURITY-RELATED INFORMATION WITHHELD UNDER 5 USC SECTION 552(b)
(4) AND 5 USC SECTION 552(b)(7)(F)

SECURITY-RELATED INFORMATION WITHHELD UNDER 5 USC SECTION 552(b)
(4) AND 5 USC SECTION 552(b)(7)(F)

SECURITY-RELATED INFORMATION WITHHELD UNDER 5 USC SECTION 552(b)
(4) AND 5 USC SECTION 552(b)(7)(F)

NOTE: VERTICAL BARS
SYMMETRIC ABOUT
Ø HATCH. ~

WALL REINFORCEMENT AT EQUIPMENT HATCH

ELEVATION
3/16" = 1'-0"

STIRRUP ANCHOR PLATE SCHEDULE (UNIT: #)						
BAR SIZE	CADWELD TO SERIES NO.	ANCHOR PLATE SIZE	CADWELD ASSEMBLIES REQ'D.	TEST ASSEMBLIES REQ'D.		
#6	RBB-692-JA	$1\frac{1}{2} \times 3 \times 3"$	90	7		
#8	RBB-801-JA	$3 \frac{3}{4} \times 3 \times 5"$	540	40		
#10	RBB-1092-JA	$1 \times 4 \times 7"$	—	—		
#11	RBB-1110-JA	$1 \times 4 \frac{1}{2} \times 7"$	90	7		

TABLE OF INCLINED SHEAR REINFORCING			
ZONE	ELEV. TO ELEV.	AZIMUTH	TOTAL AREA OF REINF.
A	EL+9'30" TO EL+9'24"	240° TO 300°	24.0 TO IN. ²
B	EL+9'24" TO EL+9'15"	287° TO 300°	85.85 IN. ²
C		277°45' TO 287°	61.0 IN. ²
D		262°15' TO 277°45'	102.38 IN. ²
E		255° TO 262°15'	47.87 IN. ²
F		240° TO 255°	99.08 IN. ²
G	EL+9'15" TO EL+9'	290° TO 300°	36.21 IN. ²
H		277°45' TO 290°	44.39 IN. ²
I		262°15' TO 277°45'	56.15 IN. ²
J		248°15' TO 262°15'	50.70 IN. ²
K		240° TO 248°15'	29.90 IN. ²

*INCLUDED IN TOTAL AREA OF REINF. REQ'D.

PENETRATIONS		ELEV TO ELEV. (APPROXIMATE)	AREA REQUIRED* (UNIFORMLY DISTR.)
X-29 TO X-33	X-47	©19'-0" TO ©17'-11"	13.85 IN. ²
X-11 TO X-12	X-48	©20'-7" TO ©16'-5"	28.90 IN. ²
X-39 TO X-40	X-49	©19'-0" TO ©17'-11"	8.94 IN. ²
X-35 TO X-37	X-50	©21'-0" TO ©16'-6"	35.00 IN. ²
X-43 TO X-32	X-51	©11'-2" TO ©9'-1"	4.69 IN. ²
X-58 TO X-45	X-52	©11'-2" TO ©9'-1"	9.07 IN. ²
X-49 TO X-48	X-53	©12'-0" TO ©8'-0"	23.19 IN. ²
X-46 TO X-18	X-54	©14'-4" TO ©12'-3"	10.52 IN. ²
X-20 TO X-23	X-55	©7'-5" TO ©5'-0"	8.95 IN. ²
X-19 TO X-31	X-56	©14'-3" TO ©12'-6"	3.76 IN. ²

STIRRUP ARRANGEMENT FROM 240° TO 300° AZIMUTH

SCALE: $\frac{1''}{4'} = 1'-0''$

DIAGONAL REINFORCEMENT AT EQUIPMENT HATCH

ELEVATION

SECTION

1. FOR GENERAL NOTES SEE DWG. NO. 9763-F-101435
2. PROVIDE #8 SPACER BARS AS REQUIRED BETWEEN LAYERS OF PARALLEL EQUIPMENT HATCH BENT BARS TO MAINTAIN 1" MINIMUM CLEARANCE BETWEEN LAYERS.

NOTES FOR PENETRATION AREA (240° TO 300°)

2. ZONES OF INCLINED STIRRUPS INDICATE REQUIRED AREA OF REINFORCING AT OUTSIDE FACE OF WALL USE $\frac{1}{8}$ OR $\frac{3}{16}$ INCLINED STIRRUPS IN ANY COMBINATION TO OBTAIN REQUIRED AREA FOR A GIVEN ZONE.
3. PENETRATIONS ARE SHOWN AT MIDDLE SURFACE AND ACCESS OPENINGS ARE SHOWN AT OUTSIDE FACE OF WALL.
4. ALL ADDITIONAL ACCESS OPENINGS REQUIRED BY FIELD ARE CONSIDERED TEMPORARY AND STIRRUPS MUST BE PLACED PRIOR TO CONCRETE PLACEMENT.
5. WHEREVER ANCHOR PLATES ARE USED WITH STIRRUPS, PLATE SHOULD REST IN THE PLANE OF LAYER 1 OR 2 ON THE INSIDE AND LAYER 8 OR 7 ON THE OUTSIDE.

REFERENCE DWGS.

- 01495 - CONTAINMENT CONCRETE
TYPICAL REINFORCING.
0101440 - CONTAINMENT CONCRETE
EQUIPMENT HATCH REINF. SHT. I
01495 - CONTAINMENT LINER-VERTICAL WALL.
01496 - CONTAINMENT LINER-WALL OPNGS. &
PENETRATIONS.
01497 - CONTAINMENT LINER-PENETRATIONS
SCHEDULE.

6. FINAL AS-BUILT STAIRUP ARRANGEMENT SHALL BE SKETCHED SHOWING BAR SIZE AND LOCATION (BY VISUAL INSPECTION) AND SUBMITTED TO THE RESIDENT CONSTRUCTION ENGINEER FOR APPROVAL PRIOR TO CONCRETE PLACEMENT.

7. CONSTRUCTION MANAGERS SHALL BE NOTIFIED WHEN STAIRUPS ARE IN PLACE, IN ORDER THAT A U.E.C. FIELD ENGINEER MAY HAVE THE OPTION OF INSPECTING "THE DISTRIBUTION".

8. REFER TO DRAWING 9763-F-10497 FOR F & H

DIMENSIONS.
PROPER ANCHOR PLATES MAY BE USED WITH ANY
SIZE STIRRUP IF REQUIRED FOR INSTALLATION.
SEE ANCHOR PLATE SCHEDULE THIS DRAWING.

REV.	DATE	DESCRIPTION	CHD.	ENGR.	SUPV.
			DWN.	BY	ENG.
3	4-2-81	REIN. PENETRATION NOTES GUT PER E&A 01/15/20F.		EH	WV
1	5-3-78	FOR CONSTRUCTION		eam	WV
0	7-16-76	FOR FABRICATION		eam	WV

CONTAINMENT
CONCRETE

EQUIPMENT HATCH REF. - SHEET 2

PUBLIC SERVICE CO. OF NEW HAMPSHIRE

SEABROOK STATION

THE UNIVERSITY OF CHICAGO

HUAL-KA-FANG

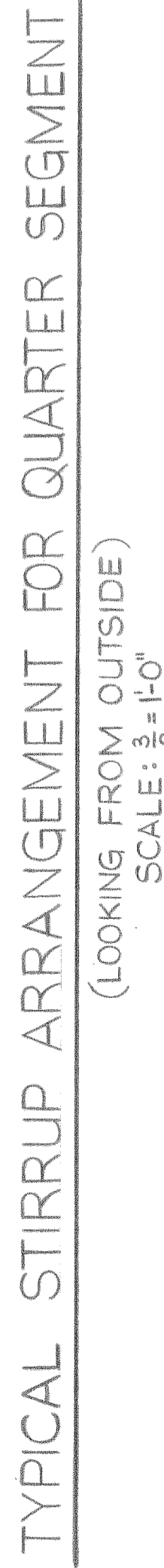


TABLE OF SUBSTITUTE ADDITIONAL #5 TRANSVERSE SHEAR REINFORCEMENT FOR ALTERNATE USE					
REGION	ZONE	SIZE OF STIRRUP	TOTAL NO.	STIRRUP LENGTH(L)	REMARKS
BOSS,TRANS, & SHELL	A	#5	4	5'-3"	END HOOKS ARE IN DIFFERENT PLANE
	B		13	VARIES	—————
	C		17	3'-6"	—————

FOR ZONE A ONLY

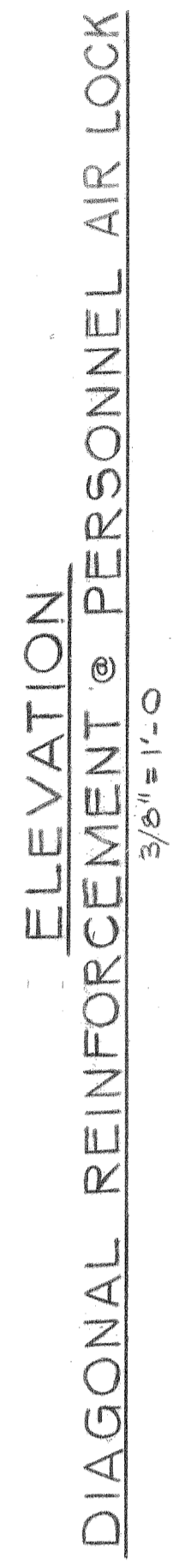
HOOK TO BE BETWEEN 90° & 180° ON INSIDE END TO SUIT FIELD CONDITION

STD. 180° HOOK

HOOK TO BE BETWEEN 90° & 180° ON INSIDE END TO SUIT FIELD CONDITION

NOTE : WHENEVER *6 STIRRUPS DO NOT FIT, SUBSTITUTE THREE (3) OF *5 STIRRUPS FOR EVERY TWO (2) OF *6 STIRRUPS.

SUBSTITUTION OF #3 & #4 STIRRUPS IS ALSO PERMITTED PROVIDED THE TOTAL REQUIRED AREA IS FURNISHED IN EACH ZONE. BUNDLED (2) STIRRUPS MAY BE USED.



4	1-1-82	REVIEW OF RECORD	5/26/84	WFW	3/2/84	KNR	1/1/84	1/1/84
3	3-22-82	REVIEW OF RECORD	5/26/84	WFW	3/2/84	KNR	1/1/84	1/1/84
2	1-22-82	REVIEW OF RECORD	5/26/84	EH	3/2/84	KNR	1/1/84	1/1/84
1	1-22-82	REVIEW OF RECORD	5/26/84	EH	3/2/84	KNR	1/1/84	1/1/84
EX-10	1-22-82	REVIEW OF RECORD	5/26/84	EH	3/2/84	KNR	1/1/84	1/1/84
ENGINEER	DATE	DESCRIPTION	PTE	OWN PR	REQ ENG	3/2/84	1/1/84	1/1/84
STATE OF NEW YORK No. 33-80 ENGINEER: <i>New Hampshire</i>								

**CONTAINMENT
CONCRETE
PERSONNEL AIR LOCK REINF. - SHEET 1**
ALIC SERVICE CO. OF NEW HAMPSHIRE
SEABROOK STATION
ea **united engineers** & constructors inc.

N-STAMP	ITEM
HQ04E	Siglan ^{elst}

DATE	DISCIPLINE	CRG BY	DATE
8/22	INST & CONTR.	N/A	
	ELECT.	N/A	

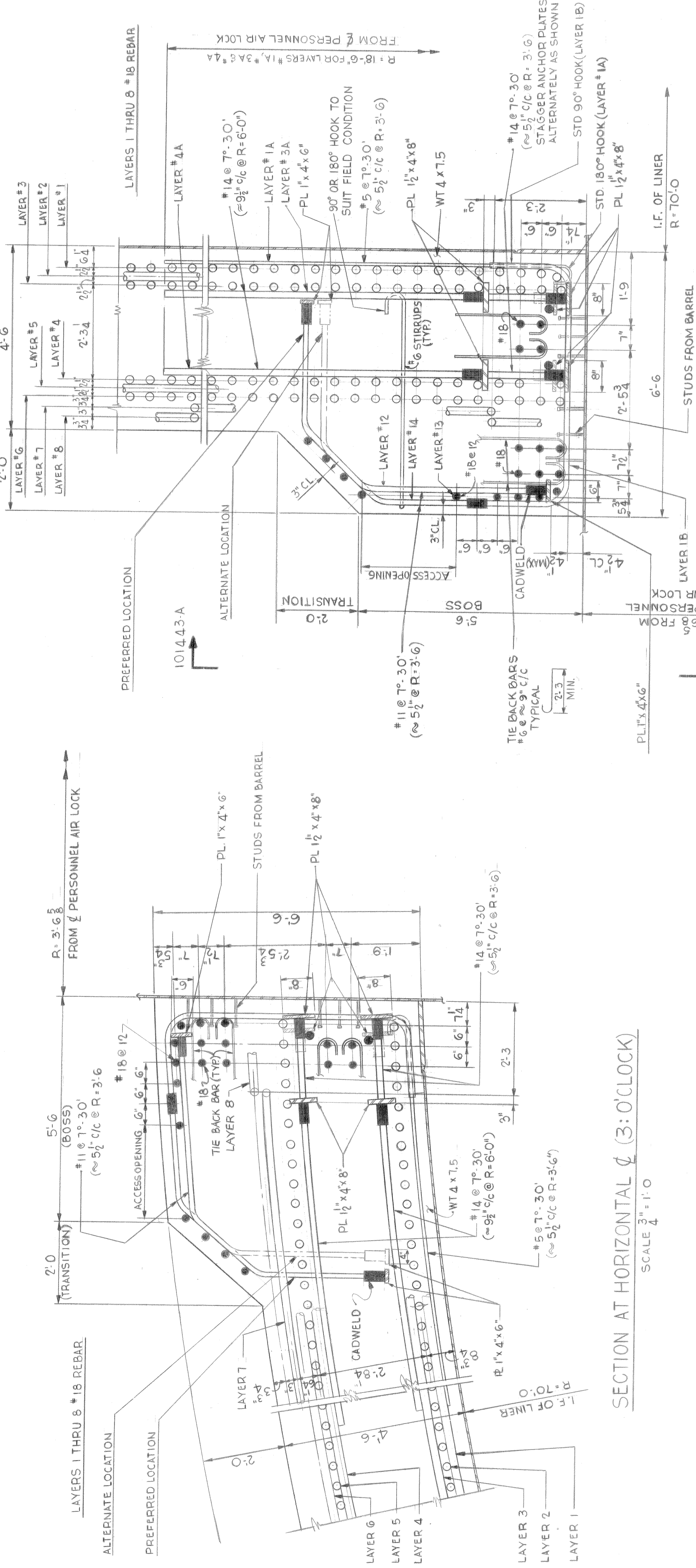
UNITS 1 AND 2 9763-F-101442 1 AREA 017 CS

ANCHOR PLATE SCHEDULE				
PIECE MARKS (*)	CADWELD TO BAR SIZE	ANCHOR PLATE SIZE	TOTAL NO. FOR UNIT #1	TOTAL NO. FOR UNIT #2
A6/I, A7/I	#11	RBB-1101JA 1'x4'x6"	144	144
A205/I, A5/I	#14	RBB-1401JA 1 1/2'x4'x8"	192	192

(*) PIECES ARE DIFFERENT ONLY FOR ORIENTATION OF TAP HOLES. FOR DETAILS AND QUANTITIES SEE ALL DWGS. (UE&C FP #13610 THRU 13618 & 13634 THRU 13640).

NOTES

- FOR GENERAL NOTES AND LIST OF REFERENCE DWGS. SEE DWG. NO. 9763-F-101435
- WDS. 1101 & 1401, W/TH DWGS. NO. 9763-F-101442
- HOOP BAGS TO BE FABRICATED WITH THE LARGEST HOOP LENGTH PRACTICAL FOR SHIPMENT. HOOP BAR CADWELD SPLICES TO BE STAGGERED 12" MIN. FROM THE ADJACENT CADWELD SPLICE. CADWELD SPLICES TO BE STAGGERED BETWEEN RADIAL BARS WHERE APPLICABLE.
- LAYER #3A, 7A, 10 & 14 SHOULD BE BENT WITH A CONSTANT RADIUS IN A GROUP OF 45°. ONE SEGMENT OF 45° SHOULD BE SYMMETRICAL AROUND 12 O'CLOCK IN THE HOOP DIRECTION.
- FOR ANCHOR PLATE DETAIL SEE DWG. NO. 9763-F-101440
- FOR TRANSVERSE SHEAR BARS SEE DWG. NO. F-101442
- SEE FCA 01226974 FOR THE AS BUILT LOCATION OF THE REBARS AND ANCHORAGE PLATES.



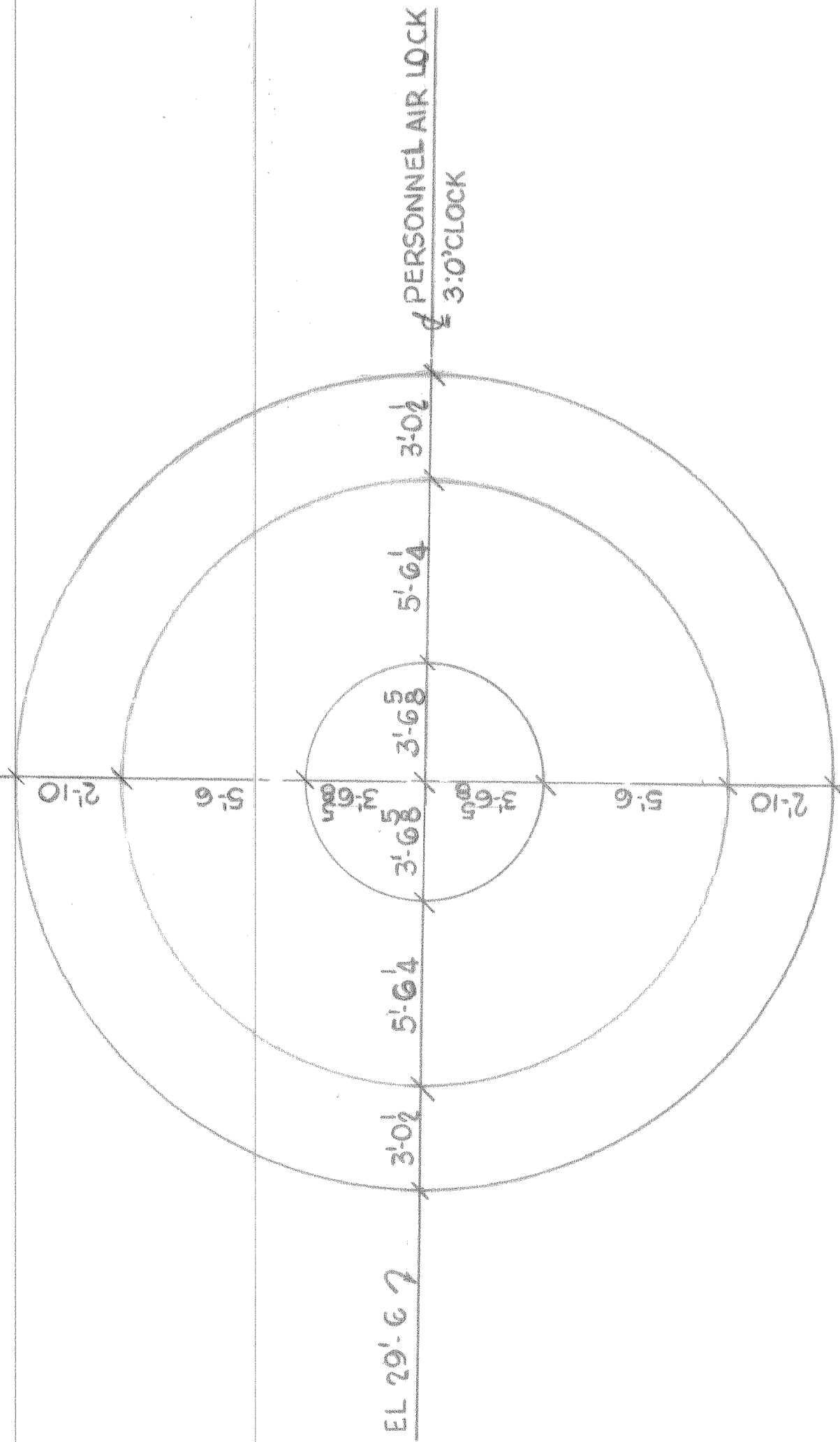
SECTION AT VERTICAL Ø 12:0'CLOCK

SCALE 3/4" = 1'-0"

SECTION AT HORIZONTAL Ø (3:0'CLOCK)

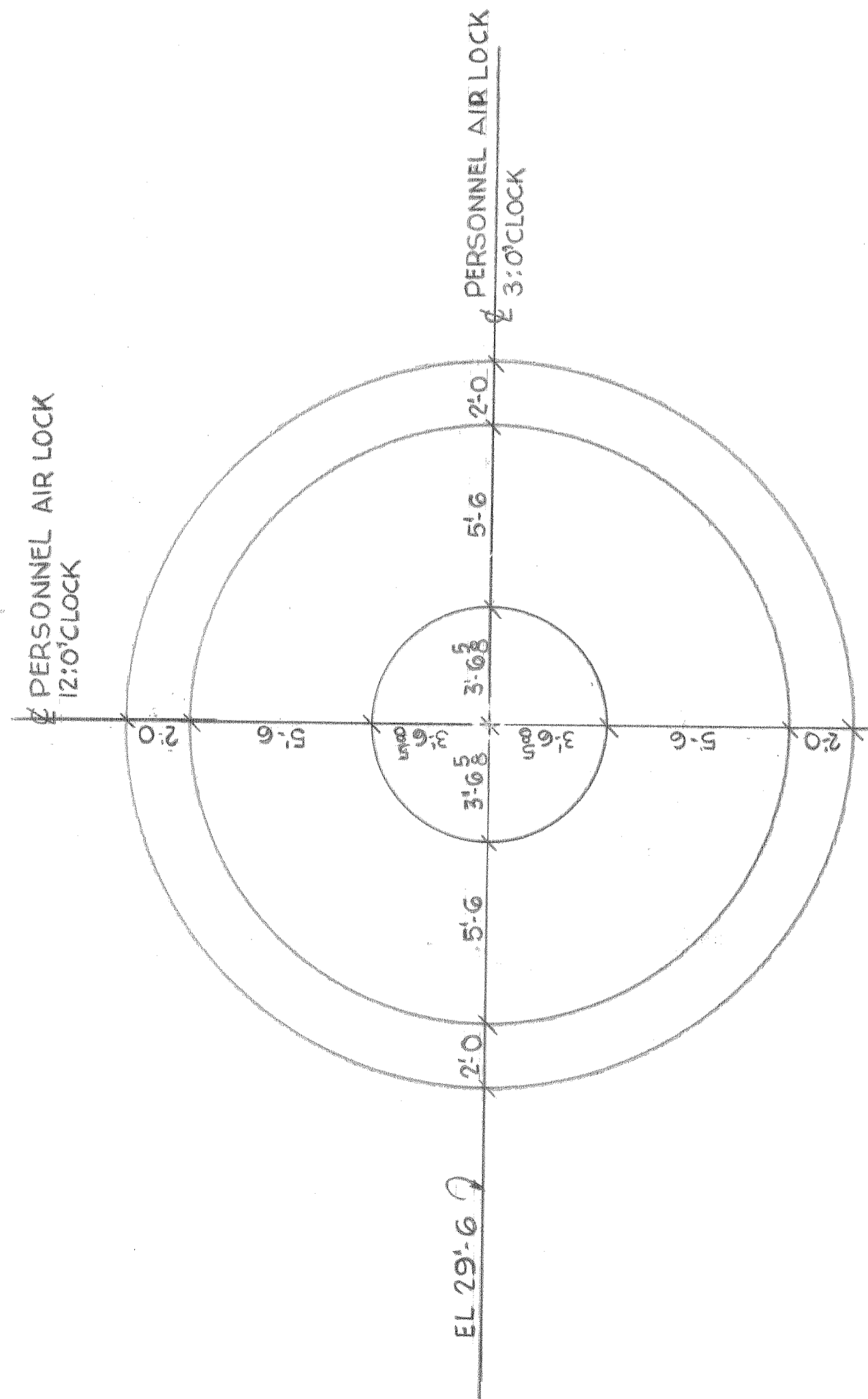
SCALE 3/4" = 1'-0"

SECTION AT HORIZONTAL Ø (3:0'CLOCK)



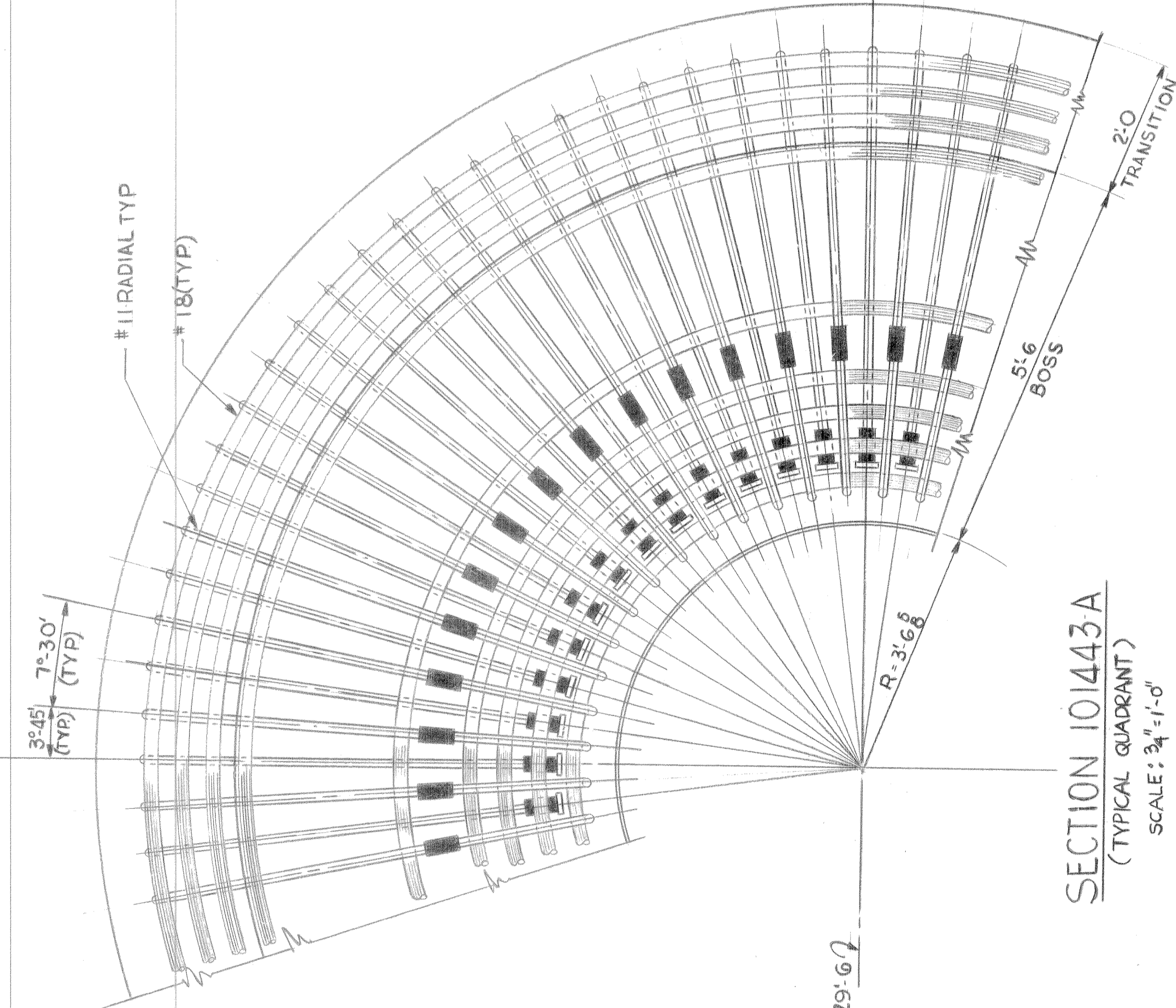
DEVELOPED ELEVATION (LOOKING FROM OUTSIDE)

SCALE 1/4" = 1'-0"



PROJECTED ELEVATION (LOOKING FROM OUTSIDE)

SCALE 1/4" = 1'-0"



SECTION 101443A (TYPICAL QUADRANT)

SCALE: 3/4" = 1'-0"

NO.	DATE	DESCRIPTION	BY	CHKD BY	DATE	NO.	DATE	DESCRIPTION	BY	CHKD BY	DATE
1	10/1/84	REVISED NOTE 1	WJ	TJD	ATL	1	10/1/84	REVISED NOTE 1	WJ	TJD	ATL
2	10/1/84	REVISED NOTE 2	WJ	TJD	ATL	2	10/1/84	REVISED NOTE 2	WJ	TJD	ATL
3	10/1/84	REVISED NOTE 3	WJ	TJD	ATL	3	10/1/84	REVISED NOTE 3	WJ	TJD	ATL
4	10/1/84	REVISED NOTE 4	WJ	TJD	ATL	4	10/1/84	REVISED NOTE 4	WJ	TJD	ATL
5	10/1/84	REVISED NOTE 5	WJ	TJD	ATL	5	10/1/84	REVISED NOTE 5	WJ	TJD	ATL
6	10/1/84	REVISED NOTE 6	WJ	TJD	ATL	6	10/1/84	REVISED NOTE 6	WJ	TJD	ATL
7	10/1/84	REVISED NOTE 7	WJ	TJD	ATL	7	10/1/84	REVISED NOTE 7	WJ	TJD	ATL
8	10/1/84	REVISED NOTE 8	WJ	TJD	ATL	8	10/1/84	REVISED NOTE 8	WJ	TJD	ATL
9	10/1/84	REVISED NOTE 9	WJ	TJD	ATL	9	10/1/84	REVISED NOTE 9	WJ	TJD	ATL
10	10/1/84	REVISED NOTE 10	WJ	TJD	ATL	10	10/1/84	REVISED NOTE 10	WJ	TJD	ATL

N-STAMP ITEM

HOOAE

STATE REG. NEW HAMPSHIRE NO. 330.0

CONTAINMENT CONCRETE

PERSONNEL AIR LOCK REINF. - SHEET 2

PUBLIC SERVICE CO. OF NEW HAMPSHIRE

SEABROOK STATION

UNITED ENGINEERS

9763-F-101443

UNITS 1 & 2

1

AREA 017 CS

SECURITY-RELATED INFORMATION WITHHELD UNDER 5 USC SECTION 552(b)
(4) AND 5 USC SECTION 552(b)(7)(F)