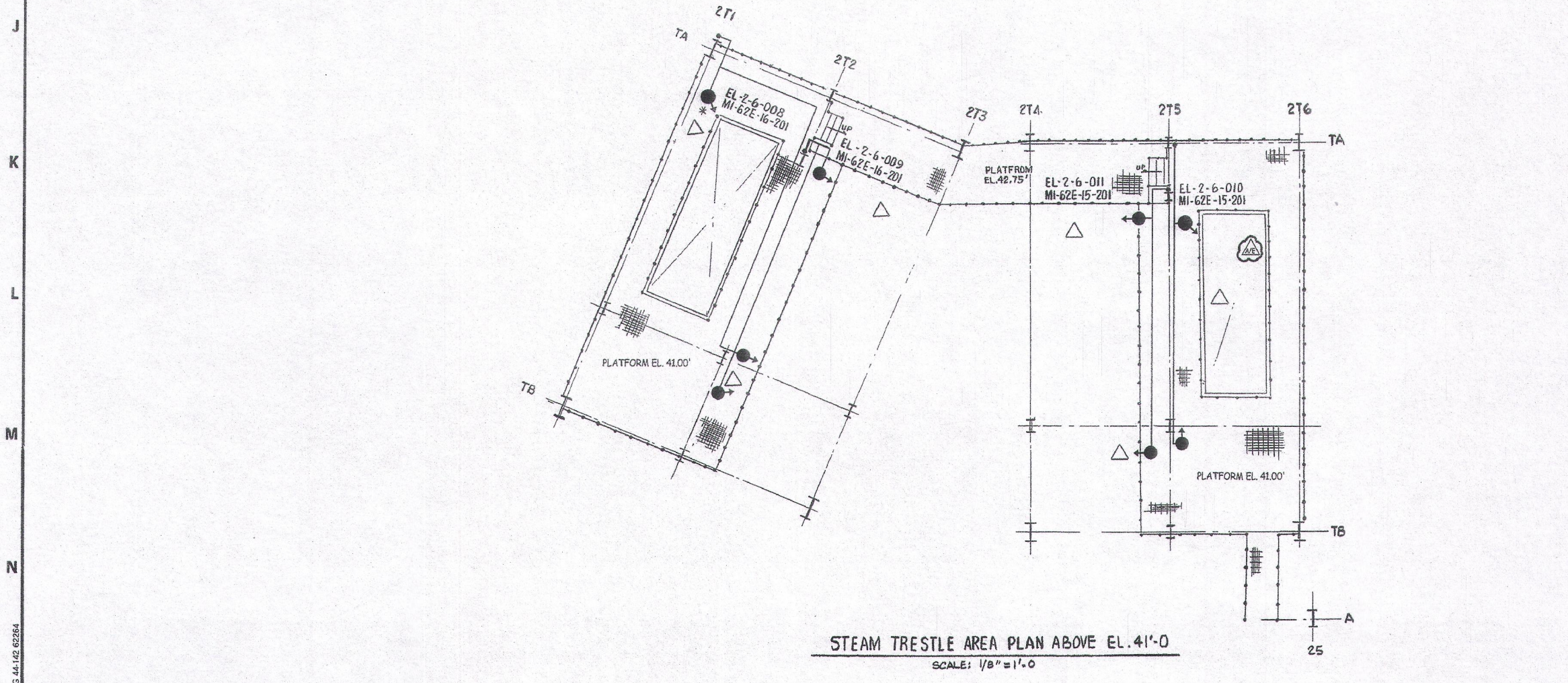
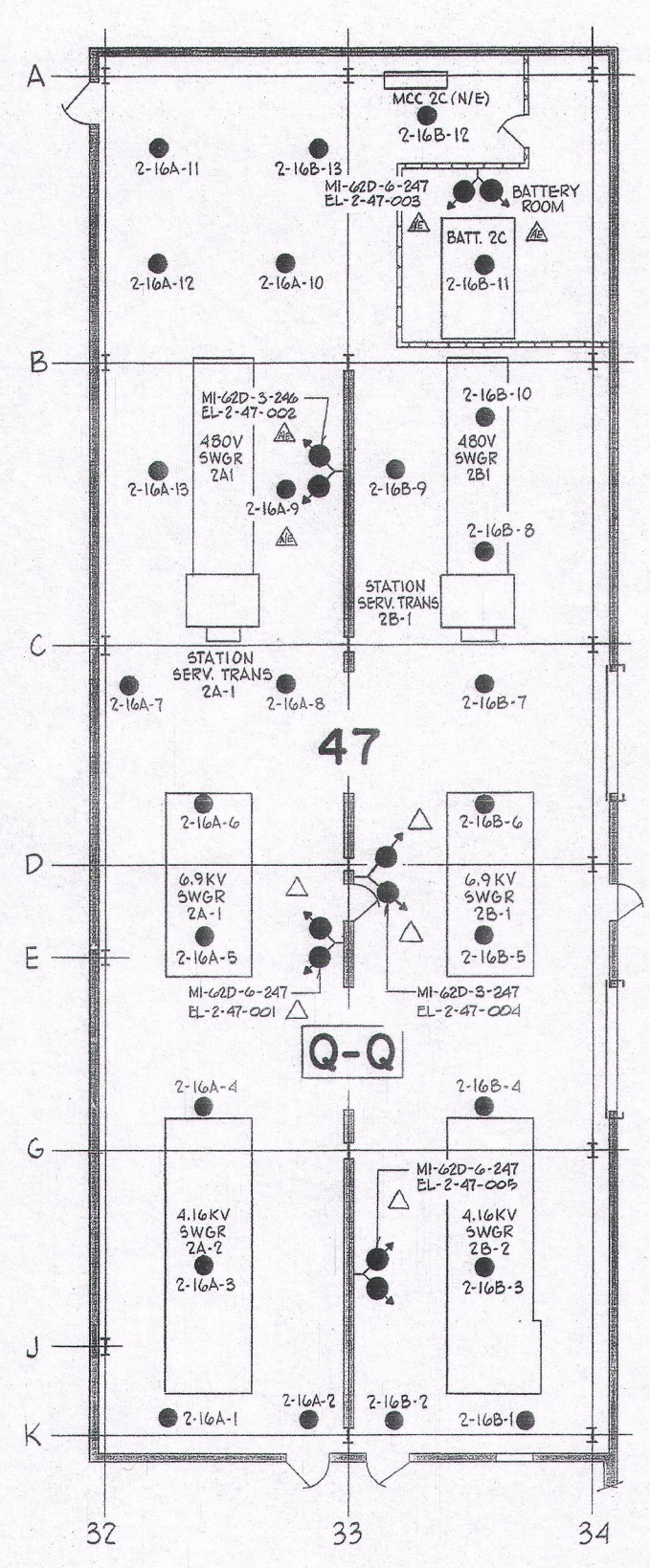


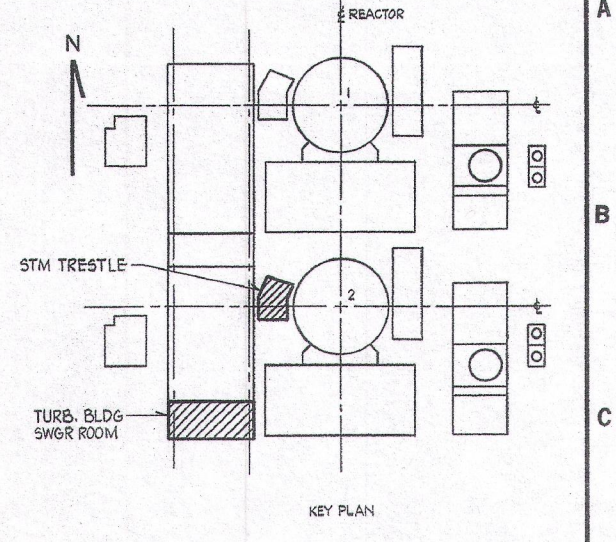
STEAM TRESTLE AREA PLAN EL. 19.00
SCALE 3/16"=1'-0"



STEAM TRESTLE AREA PLAN ABOVE EL. 41.0
SCALE: 1/8"=1'-0"

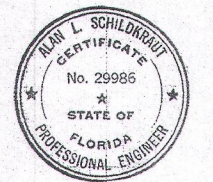


TURBINE BLDG - SWITCHGEAR ROOM
PART PLAN EL. 19.50'
SCALE 1/8"=1'-0"



- NOTES:**
1. NOT USED
 - 2.
 - 3.
 - 4.
 - 5.
 - 6.
 - 7.
 8. FOR SYMBOLS, NOTES & REFERENCE DRAWINGS SEE DWG 2998-G-424 SH. 1.
 9. A.C. POWER SOURCE RECEPTACLE FOR APPENDIX "R" EMERGENCY BATTERY PACK LIGHTING UNITS SEE 2998-G-408 SH. 2B & 2998-G-360

- REFERENCE DRAWINGS**
1. STEAM TRESTLE AREA LTG. AND DETAILS 2998-G-408 SH. 2B
 2. MAIN STEAM TRESTLE PLAN EL. 41.0 2998-G-408 SH. 2C
 3. OUTLYING AREAS FIRE PROTECTION SYSTEM CONDUIT LAYOUT 2998-G-413 SH. 6.



THIS DOCUMENT IS THE PROPERTY OF EBASCO SERVICES INCORPORATED. ITS USE IS EXPRESSLY RESTRICTED BY THE TERMS OF THE CONTRACT, DATED AS OF SEPTEMBER 1, 1975 BETWEEN EBASCO SERVICES INCORPORATED AND FLORIDA POWER & LIGHT COMPANY.

FLORIDA POWER & LIGHT COMPANY
ST. LUCIE PLANT
1983-890 MW (6) EXTENSION-UNIT NO. 2
FIRE PROTECTION
STEAM TRESTLE AREA EL. 19.00'
TURBINE BLDG-SWGR RM EL. 19.50'
FIRE DETECTORS AND EMERGENCY LIGHTS
EBASCO SERVICES INCORPORATED

NO.	DATE	REVISION	BY	CHK.	APPROVED
5	1/7/15	EC279903 ADD: (C5 & L9) ACCESS/EGRESS CALLOUT	RW	GM	AW
4	2/4/10	CRN 07127-17939 REV. (J5-M9) STM TRESTLE PLAN EMERG LTG.	MZ	GW	DG
3	1/14/00	P2/M 98028 ADDED: LTG PLAN (L7) REMOVED: E-LTG. TABULATION (L7) REVISED: SYMBOLS (F44), (H4)	RAC	DWC	-
2	10-14-99	REM 221-232 REV: (C2, C9, D2, D5, D7, D11, G7) EMERG. LTG. NO. ADD: (B14, B5, C2, C9, C13, D2, D5, E5, E11, F13, F9, G1, G15, G18-19, K2-3 THRU N5-8) EL. NOTE, DESP. (F18, F9 C13-19) INTEREST	AWS	NA	BB
1	10-20-99	ADDED: EQUIP AS NOTED; PART PLAN (E14); REVISED: KEY PLAN (C18); TITLE BLOCK (N15)	SS	MM	NL

SCALE: 3/16"=1'-0"	APPROVED: [Signature]	DATE: 8-10-14
DIV: ELEC	DR: [Signature]	2998-G-424 S09
NO. 15	DATE 8/10/14	19 CAD FILE: R2998-G-424-sh.9-R5.dwg

D 64