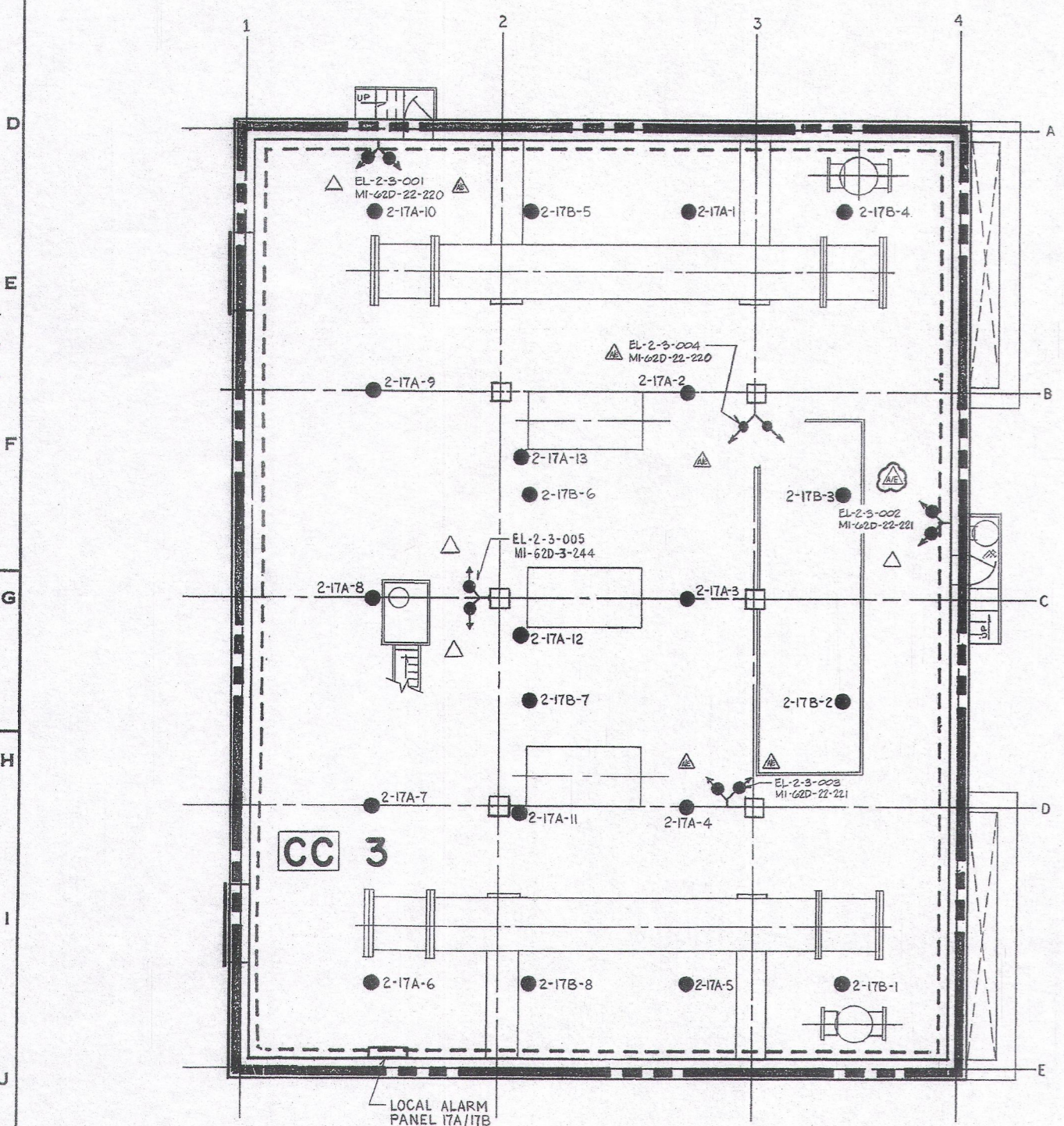
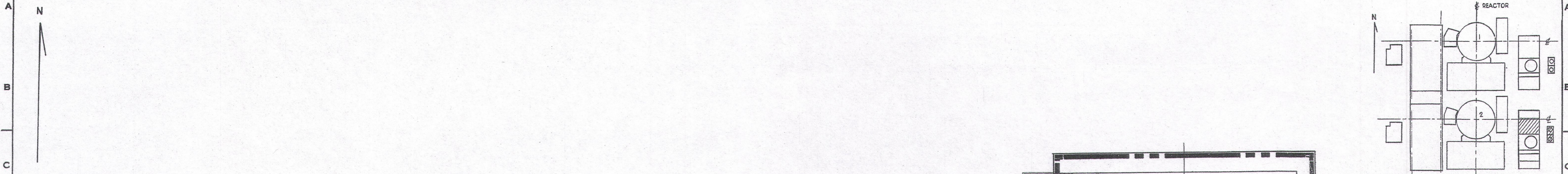
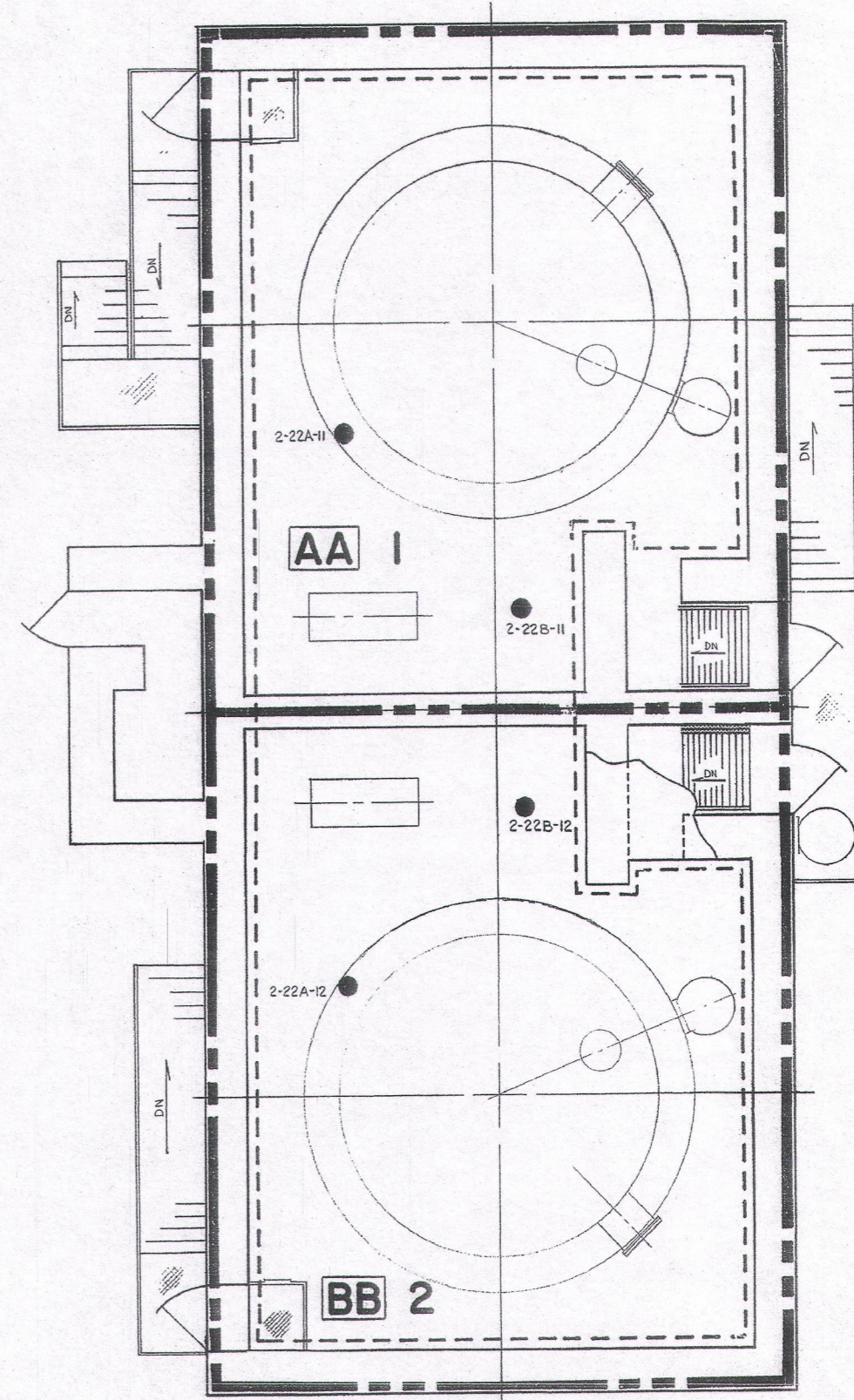


2998-G-424 S08



COMPONENT COOLING BUILDING  
1/8" = 1'-0"



DIESEL OIL STORAGE BUILDING  
1/4" = 1'-0"

NOTE  
1- FOR FIRE PROTECTION SYMBOLS  
SEE DWG NO 2998-G-424 S01  
2- A.C. POWER SOURCE RECEPTACLE FOR APPENDIX 'R'  
EMERGENCY BATTERY PACK LIGHTING UNITS SEE  
2998-G-408, 5H 1B.



NO.	DATE	REVISION	BY	CHK.	APPROVED
8	1/6/75	EC279903 ADD: (F6) ACCESS/EGRESS CALLOUT CAN 07127-1734E; DELETED SECURE TRAIN BOUNDARY.	RAN	GM	AG
7	10/7/08	REVISED: (F5) EMERG LIGHTS LOCATION	DG	RAC	-
6	1/4/60	PC/M 98023 ADD: (E-LTG) (G3) REVISED: SYMBOLS (G2), (F1), (G6) DELETED: E-LTG TUBULATION (G4)	RAC	DWG	-
5	1/2/60	PC/M 251-292 ADD: (D2, F4, F6, H4-5, H1B-19, M2 THRU 9, N2 THRU 9) LABELING OF EMERGENCY LITG. NOTE 2, EMER. LITG. TRANSLATION	ANB	ES	NA
4	10-24-43	ADDED: SYMBOL TO INDICATE APP'R TRAIN B SECURE AREA (I5) SYMBOL TO INDICATE APP'R TRAIN X SECURE AREA (E15) NOT CIRCLED FOR CLARITY	J	RP	-
3	9-3-45	REVISED: KEY PLAN (C18) DELETED: PLAN (K9)	J	RP	-
2	2-20-45	REVISED: EMERGENCY LITG FIXTURE LOC. (C10 TO F8)	SHC	SD	-

THIS DOCUMENT IS THE PROPERTY OF EBASCO SERVICES INCORPORATED. ITS USE IS EXPRESSLY RESTRICTED BY THE TERMS OF THE CONTRACT, DATED AS OF SEPT 1, 1975 BETWEEN EBASCO SERVICES INCORPORATED AND FLORIDA POWER & LIGHT COMPANY.

FLORIDA POWER & LIGHT COMPANY  
ST. LUCIE PLANT  
1983-890 MW (e) EXTENSION UNIT NO. 2  
FIRE PROTECTION  
OUTLYING AREAS  
FIRE DETECTORS AND EMERGENCY LIGHTS

EBASCO SERVICES INCORPORATED NEW YORK  
SCALE AS NOTED  
APPROVED: [Signature]  
DATE: 6/14/74  
DIV. ELEC  
DR. EJE  
CH. E.C.O.  
2998-G-424 S08

D63