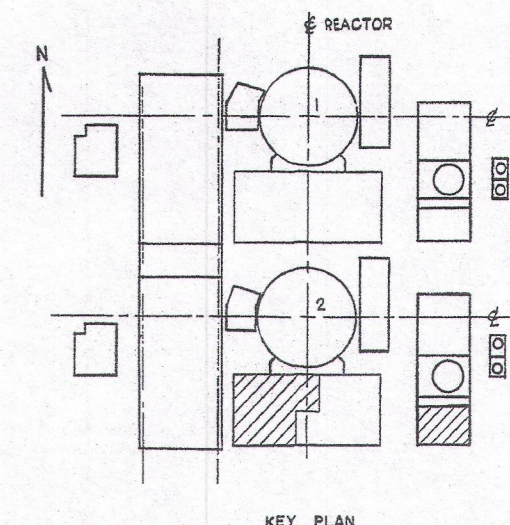
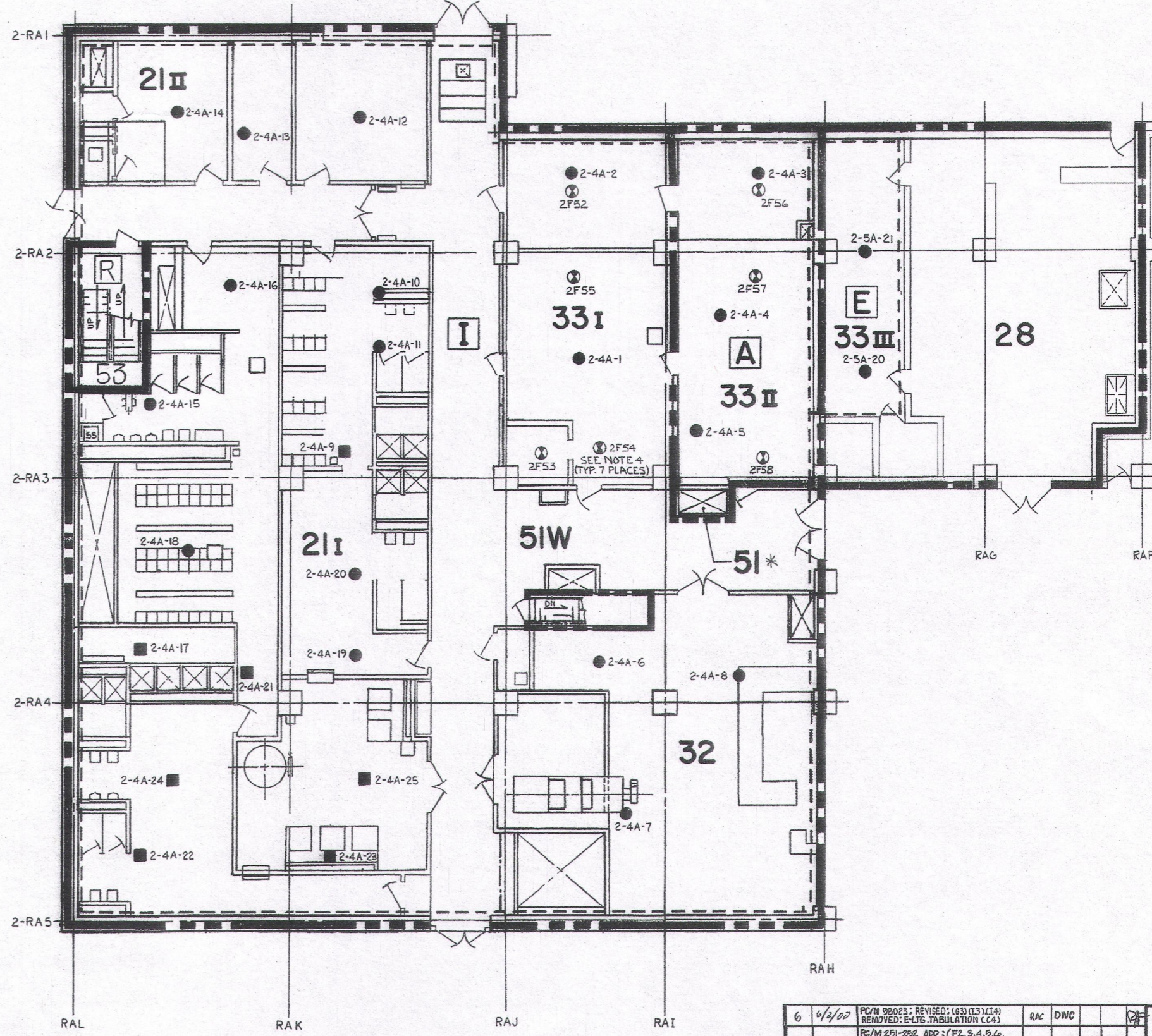
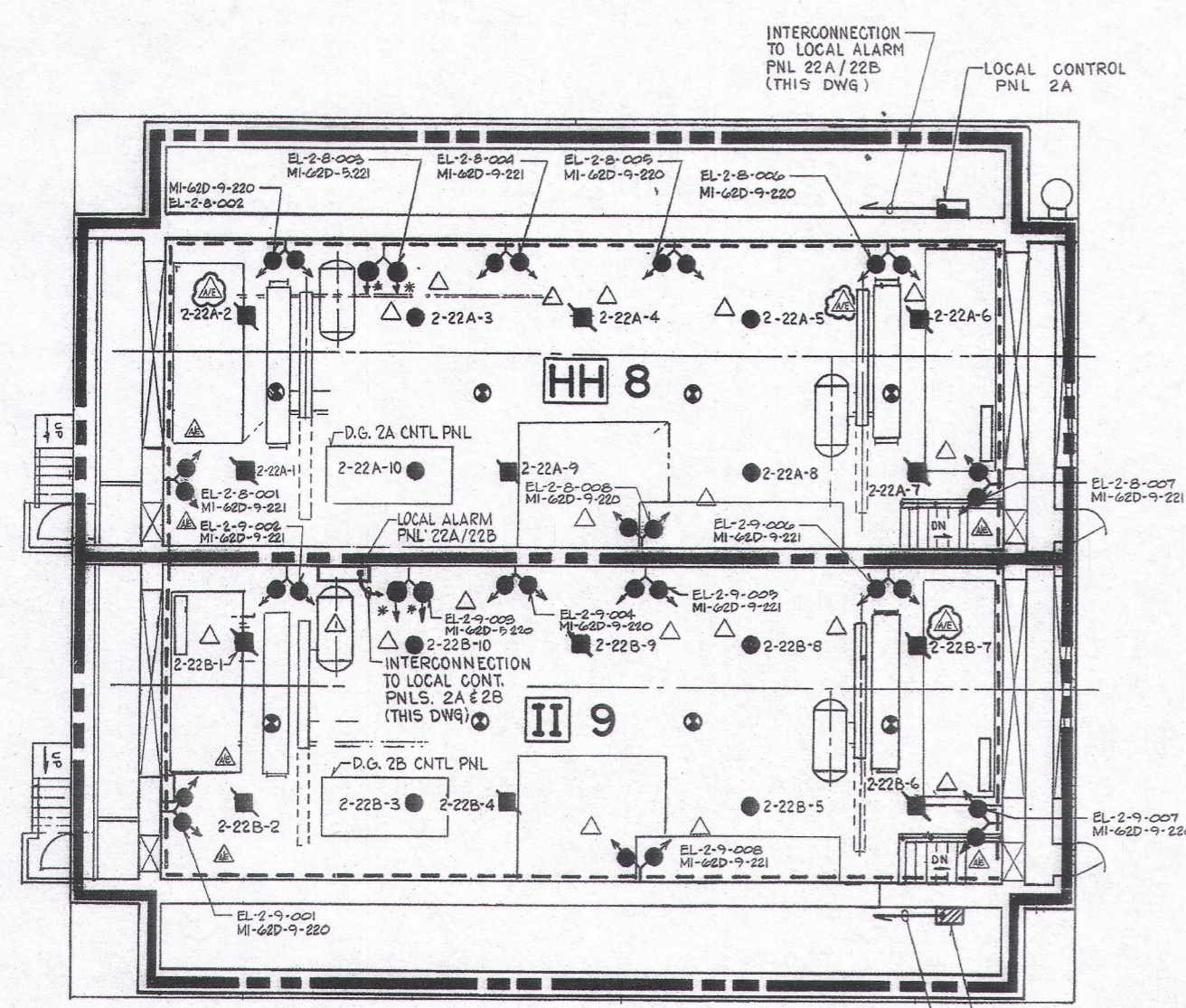


2998-G-424 S05



- NOTES
1. FOR FIRE PROTECTION SYMBOLS SEE DWG NO 2998-G-424 S01.
  2. FOR DETECTORS ABOVE CEILING (EL. 28'-8") SEE DWG 2998-G-424 S02.
  3. A.C. POWER SOURCE RECEPTACLE FOR APPENDIX "R" EMERGENCY BATTERY PACK LIGHTING UNITS. SEE 2998-G-424 S02.
  4. FOR SPRINKLER SYSTEM 2F DETECTION SYSTEM, SEE DWG'S 2998-15900 AND 2998-15944.



NO.	DATE	REVISION	BY	CHK.	APPROVED
6	4/4/60	PC/M PROPS. REVISED (G3) (G3) (I4) REMOVED: E-1, G, TABULATION (C4)	RAC	DWC	
5	11-5-93	RE/M 201-202 ADD: (F2, 3, 4, 9, 6, 6, 8, 9, 7, 6, 12, 14, 15, 17, 24, 3, 4, 9, 6, 12, 15, 17, 24) EMERGENCY LTA; (A2-G, THRU B2-G) TAB; (F18-19) NOTE	AWB	EB	RB
4	12-4-92	ADDED: (G8, H8) FIRE AREA/ZONE 1 (N18) NOTE. PER PCM H6-292[E]	BD	DEPR	W
9	11/6/93	EC279903 ADD: (G2, G6 & I6) ACCESS/EGRESS CALLOUT	RAK	GA	GA
8	10/7/08	CRN 07127-17345; DELETED SECURE TRAIN BOUNDARY.	MZ	GM	DG
7	7/1/01	ADDED: THERMAL DETECTORS (F13, F14, G13, G14, I13, I14) FIRE ZONE (I14) & NOTE 9. REVISED ZONE 33I ROOM CONFIG (I13) PER PCM 00008.	MZ	DG	GA

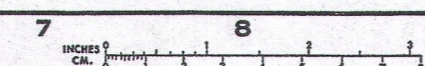
THIS DOCUMENT IS THE PROPERTY OF EBASCO SERVICES INCORPORATED. ITS USE IS EXPRESSLY RESTRICTED BY THE TERMS OF THE CONTRACT DATED AS OF SEPT 1, 1975 BETWEEN EBASCO SERVICES INCORPORATED AND FLORIDA POWER & LIGHT COMPANY.

FLORIDA POWER & LIGHT COMPANY  
ST. LUCIE PLANT  
1983-890 MW (4) EXTENSION UNIT NO. 2  
FIRE PROTECTION  
REACTOR AUX. BLDG EL. 19.50'  
DIESEL GENERATOR BUILDING  
FIRE DETECTORS AND EMERGENCY LIGHTS

EBASCO SERVICES INCORPORATED NEW YORK

APPROVED  
DATE 6-11-14  
2998-G-424 S05

THE DESIGN INFORMATION FOR THE CHANGES SHOWN IN THIS REVISION HAS BEEN ENGINEERED BY FLORIDA POWER & LIGHT COMPANY.



D62