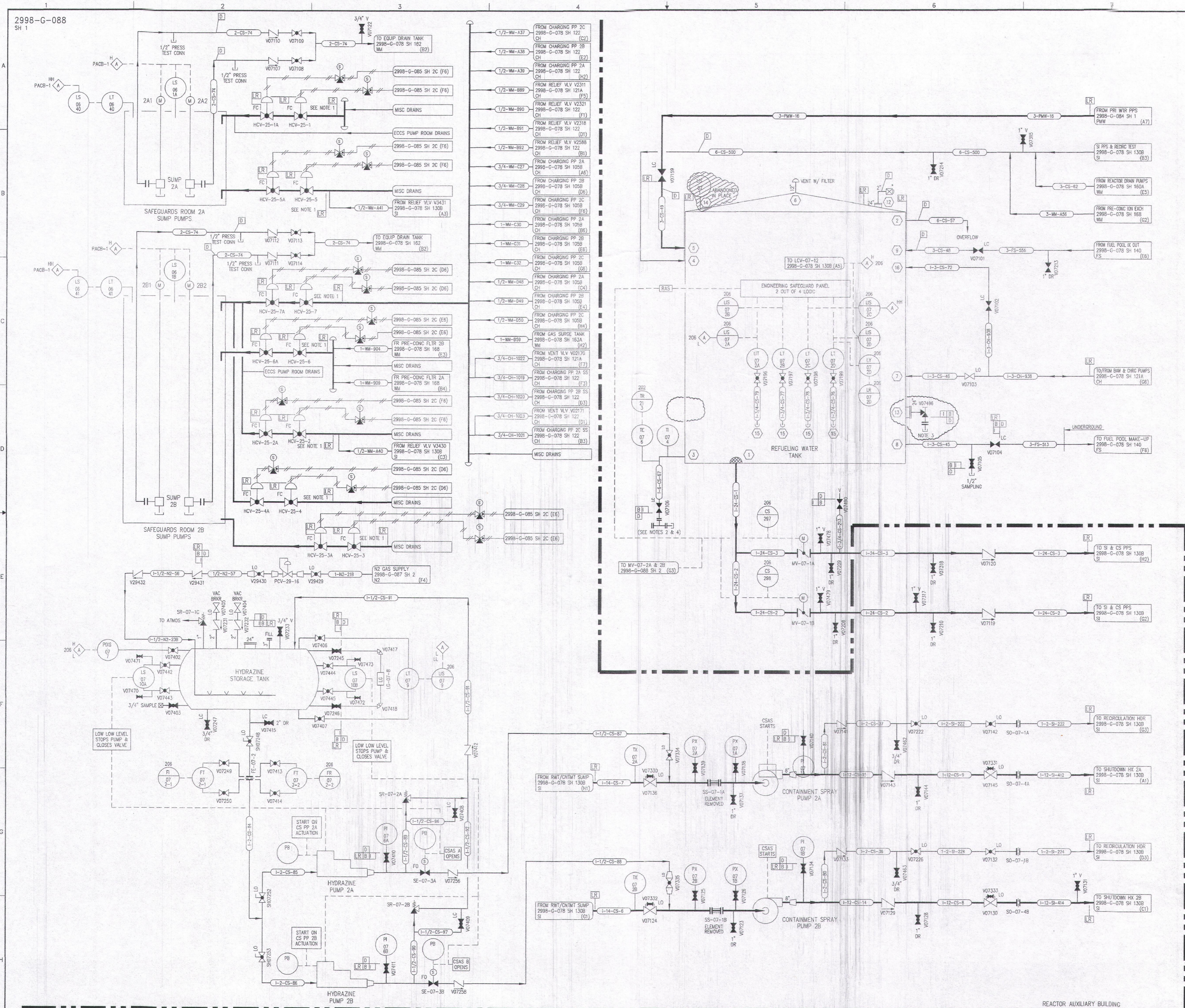


2998-G-088
SH 1



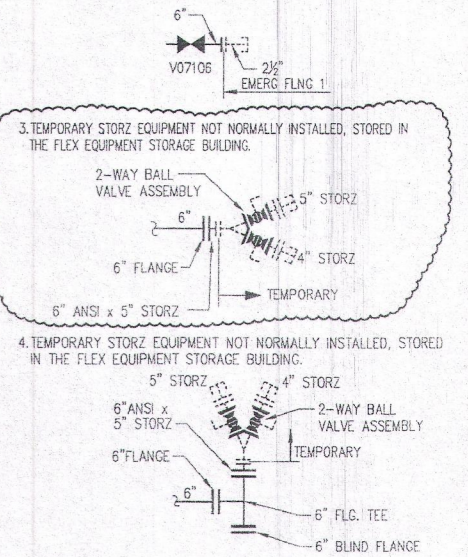
REVISIONS					
NO	DATE	DESCRIPTION	BY	CH	APPROVED
33	7/8/01	DR 010028 ADD: (C2,D2,E2,E3,G3,G4,G5,F7,G7,H7,F8,E7,D6,C7,B4,B5,B6 & A7) LICENSE RENEWAL FLAGS.	GM	HS	SHC
34	2/13/02	DR 020002 REV: (C7) CONTINUATION.	GM	GW	SHC
35	6/11/02	DR 020003 ADD: (G5 & H5) NOTES.	GM	GW	MAM
36	1/8/03	DR 020001 ADD & REV: (A1-D3) VALVES, PIPING, LR FLAGS AND CONTINUATIONS.	GM	GW	MAM
37	4/30/06	DRN 04201-13678 ADD: (B6 & C8) HOSE & LEGEND.	GM	DC	SHC
38	3/8/07	DRN 04201-15103 DEL: (D7) INSTRUMENT.	GM	GW	PCB
39	11/28/07	DRN 07091 DEL: (G5,H5) PIPING & VALVES.	GM	GW	DG
40	11/30/07	DRN 07091-16608 DEL: (F5,G5) PIPING & VALVES.	GM	GW	DG
41	12/11/07	DRN 04201-16808 REV: (D2) PIPING CONFIGURATION.	GM	GW	DG
42	5/30/08	DRN 07091-16808 ADD: (E4 & F8) REFERENCE TO NOTE AND NOTE.	GM	GW	WRN
43	5/16/09	DRN 07127-18105 ADD: (D5) VALVE & PIPING.	GM	GW	SHC
44	3/23/11	DRN 07127-18105 ADD: (G5,C5 & C3) INST. LINE UP & CONTINUATION (B5) ABANDONED INST. IN PLACE.	GM	GW	DG
45	9/27/12	DRN 07127-18105 ADD: (G5,C5 & C3) INST. LINE UP & CONTINUATION (B5) ABANDONED INST. IN PLACE.	GM	GW	DG
46	3/3/14	DRN 07127-18105 ADD: (D7) UNDERGROUND PIPE.	GM	MZ	DG
47	7/28/15	DRN 07127-18105 ADD: (E4,F8) TEE, FLANGES AND PIPE CAP. NOTES 3 & 4. REV: (E,C,G,H) NOTES.	JG	RAM	SHC
48	8/17/15	DRN 07127-18105 ADD: (A2-E4) VALVES & ACTUATORS.	GM	JG	DG
49	9/29/15	DRN 07127-18105 ADD/REV: (D5,D6) VALVES, PIPING, CONNECTION & BOUNDARIES FLAGS, (F8) NOTE 3 AND DETAIL.	GM	JG	DG

REFERENCE DRAWINGS

PIPE, VALVE & INSTRUMENT SYMBOLS	2998-G-078 SH 100
VALVE LIST	2998-A-051
LINE LIST	2998-B-052
VALVE OPERATIONAL NUMBER INDEX	2998-B-057A
INSTRUMENT INSTALLATION DETAILS	2998-B-231
INSTRUMENT LIST	2998-B-270C

NOTES:

- LICENSE RENEWAL BOUNDARY IS AT THE SAFEGUARDS ROOM WALL.
- TEMPORARY BSS FLANGE ADAPTER NOT NORMALLY INSTALLED AND STORED NEAR PORTABLE PUMP EQUIPMENT TRAILER. REMOVE 6" x 5" FLEX COUPLER ADPT. TO INSTALL EMERG. FLNG 1 ADAPTER.
- TEMPORARY STORZ EQUIPMENT NOT NORMALLY INSTALLED, STORED IN THE FLEX EQUIPMENT STORAGE BUILDING.
- TEMPORARY STORZ EQUIPMENT NOT NORMALLY INSTALLED, STORED IN THE FLEX EQUIPMENT STORAGE BUILDING.



LEGEND

HOSE ADAPTOR WITH PLUG

NOTE: THIS DRAWING IS MADE FROM REV. 22 OF DRAWING 2998-G-088

REVISION OF THIS DRAWING MAY REQUIRE UPDATE OF THE FOLLOWING DOCUMENT: FSAR FIGURE 6.2-41

NUCLEAR SAFETY RELATED IN PART ONLY

FLORIDA POWER & LIGHT COMPANY
ST LUCIE PLANT
1983 - 890 MW EXTENSION - UNIT 2
FLOW DIAGRAM
CONTAINMENT SPRAY AND
REFUELING WATER SYSTEMS

RAYTHEON ENGINEERS & CONSTRUCTORS, INC.

SCALE: NONE	APPROVAL	DATE:
DR: MICH		2998-G-088
DR. S. BATT.		SHEET 1
DR. SUNNINGHAM		49

D 57