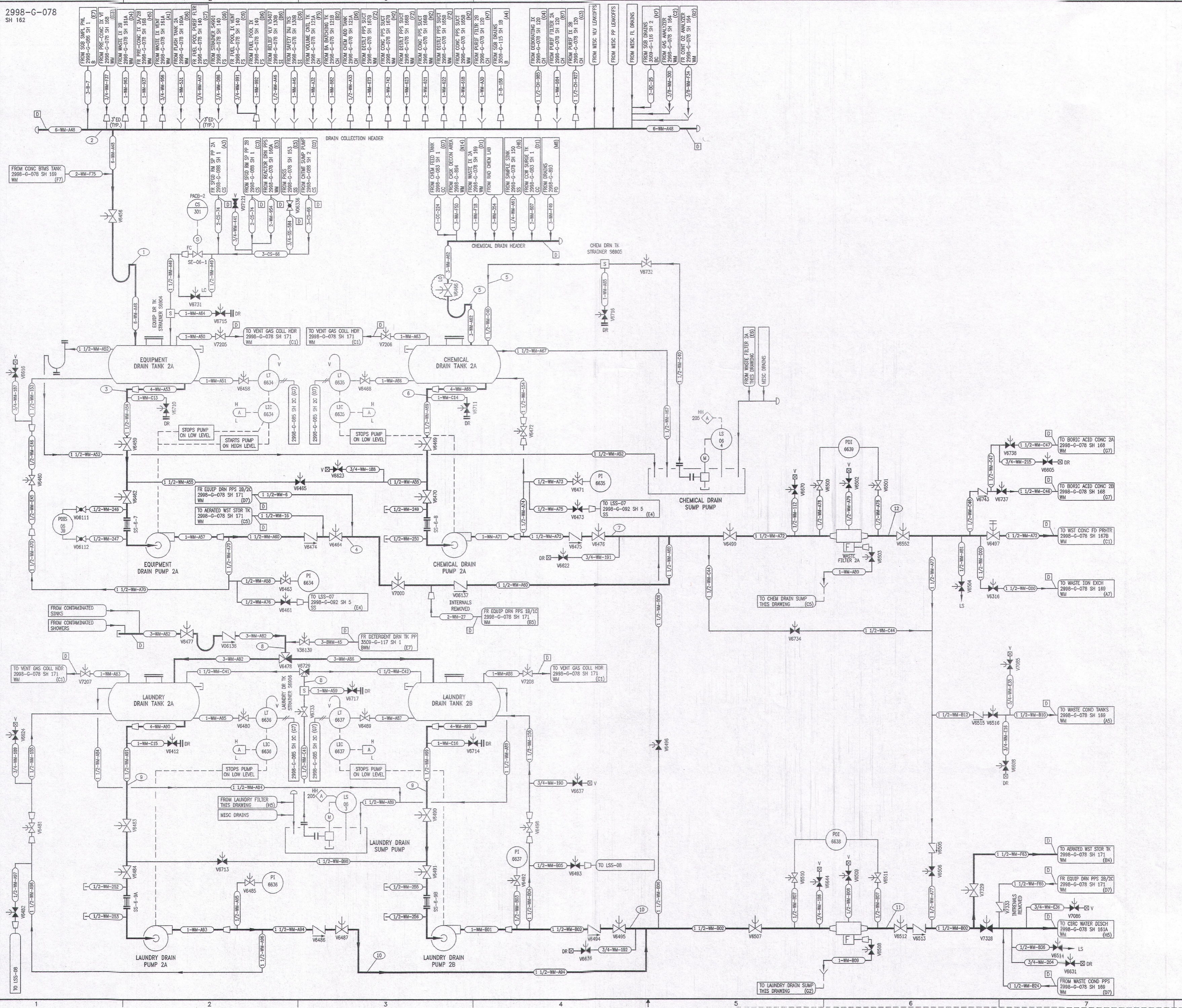


REVISIONS					
NO	DATE	DESCRIPTION	BY	CH	APPROVED
6	8/2/95	DESCRIPTION	GM	HS	JUZ
DCR-SLM-94-057: REDRAWN					
7	8/8/96		GM	HS	JUZ
DCR 98037-8036: DEL: (B1,C3,C5,F2,F3 & H5) LC/LO					
8	10/4/96		GM	HS	JRH
DCR 98037-8036: ADD: (C2) VALVE MODE 'LC'					
9	8/25/97		GM	HS	VFR
DCR 980029: REV: (F3,A4) CONTINUATION					
10	7/16/98		GM	HS	SHM
DCR 980082: REV: (G1,H5 & G4) LINE SIZES					
11	10/2/01		GM	GW	MAM
DCR 010076: REV:(A1-B5) PIPING, (A5) CONTINUATION					
12	1/8/03		GM	GW	MAM
DCR 020071: REV:(B2) CONTINUATIONS					
13	2/22/06		GM	GW	PGB
PCM 05210: REV:(E2 & E4) CONTINUATIONS					
14	4/15/08		GM	GW	DG
DCR 04201-17052: REV:(E3) CONTINUATION COORDINATE					
15	04/15/09		GM	GW	GM
DCR 07172-18548: ADD:(C3) "LO" LOCKED OPEN MODE					



REFERENCE DRAWINGS
 PIPE, VALVE & INSTRUMENT SYMBOLS 2998-G-078 SH 100
 VALVE LIST 2998-A-051
 LINE LIST 2998-B-052
 VALVE OPERATIONAL NUMBER INDEX 2998-B-057A
 INSTRUMENT INSTALLATION DETAILS 2998-B-231
 INSTRUMENT LIST 2998-B-270C

NOTE:
 THIS DRAWING IS MADE FROM REV. 5
 OF DRAWING 2998-G-078 SH 162.

REVISION OF THIS DRAWING MAY REQUIRE UPDATE OF THE FOLLOWING DOCUMENTS: FSAR FIGURE 11.2-6

FLORIDA POWER & LIGHT COMPANY
 ST. LUCIE PLANT
 1963 - 890 MWe EXTENSION - UNIT 2
**FLOW DIAGRAM
 WASTE MANAGEMENT
 SYSTEM**

RAYTHEON ENGINEERS & CONSTRUCTORS, INC

SCALE: NONE	APPROVAL	DATE:
DR: MECH		2998-G-078
DR: D. CHEFFI		SHEET 162
CH: W. PELFREY		15

2998-G-078 SH 162.R15.DWG