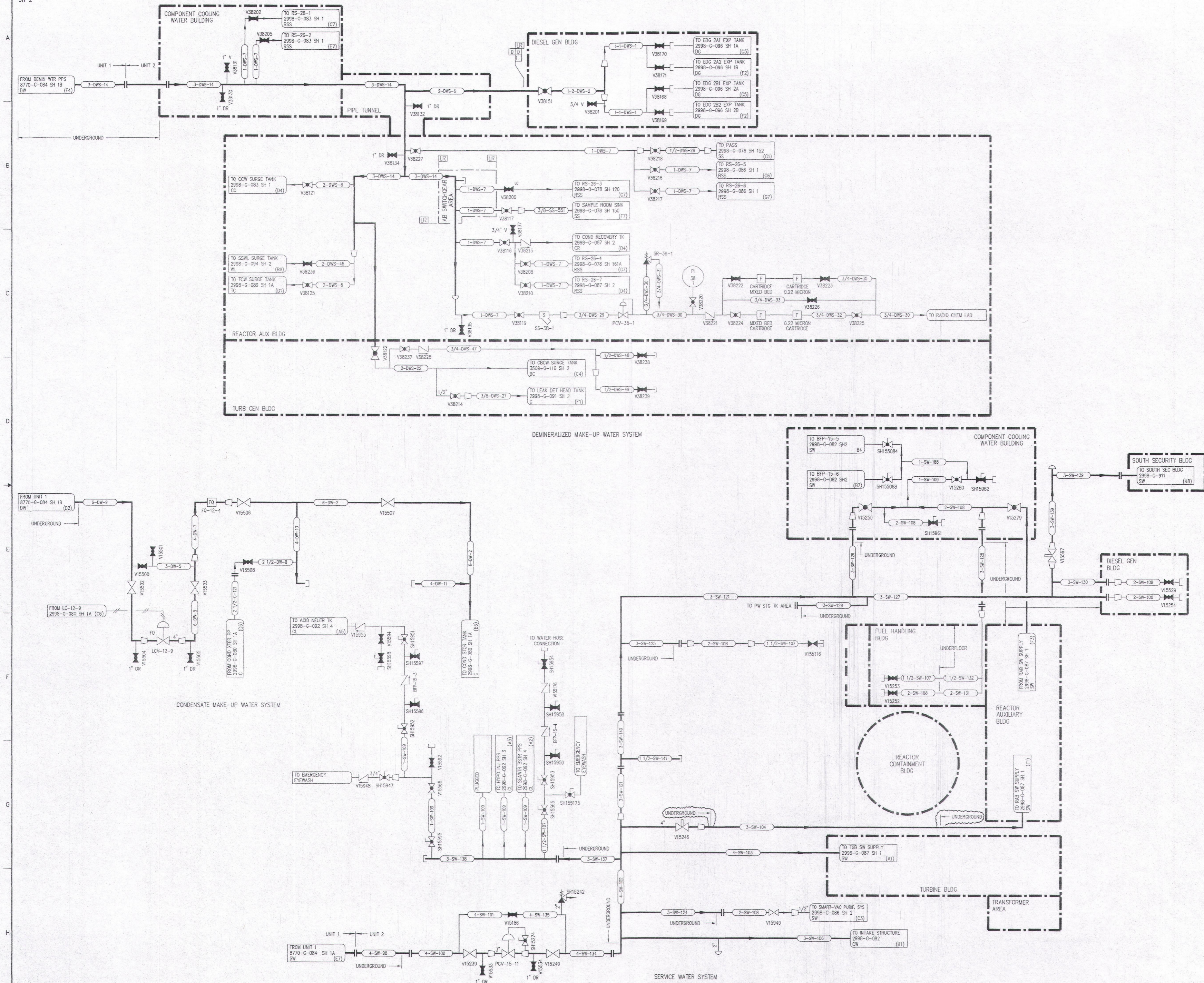


2998-G-084
SH 2



REVISIONS					
NO	DATE	DESCRIPTION	BY	CH	APPROVED
24	8/2/95	DCR-SLM-84-052, REDRAWN	GM	HS	JJZ
25	1/16/95	PC/M 032-285, DEL: DEGASIFIER (E2, H5)	PAB	SD	TWS
26	8/6/96	CRN 86037-6035, REV: (F5) LC	GM	HS	JJZ
27	11/9/96	CRN 86037-5888, REV: (B4) VALVE POSITION	GM	PDB	DG
28	8/25/97	DCR 860028, REV: (H3,E1,D4,A1) CONTINUATIONS	GM	HS	VFR
29	1/8/01	CRN 88012-8752, REV: (F3,G3 & G4) CONTINUATIONS	GM	GW	MAM
30	2/26/01	CRN 00048-8478, REV: (E2 & E3) VALVE POSITION	GM	GW	MAM
31	7/12/01	DCR 010051, ADD: (G2 & G3) PIPING & VALVES	GM	HS	WCB
32	7/26/01	DCR 000100, ADD: (A4) LICENSE RENEWAL FLAG	GM	HS	MAM
33	10/3/02	DCR 020047, ADD: (C4-B3) LR FLAGS & BOUNDARIES	GM	GW	SHC
34	5/29/03	PC/M 03055, ADD: (H5) PIPING & VALVE WITH CONTINUATION	GM	GW	MAM
35	8/25/05	CRN 03157-12200, ADD: (E6) PIPING & VALVE	GM	GW	PGB
36	5/12/06	PC/M 05181, ADD & REV: (D5-E5) PIPING & VALVES	GM	GW	PGB
37	5/29/06	PC/M 05182, ADD (D5-E6) VALVE & CONTINUATION	GM	GW	PGB
38	3/8/07	CRN 04201-15128, REV: (A2) VALVES & CONTINUATION	GM	GW	PGB
39	12/28/07	PC/M 06110, DEL: (E5-C5) PIPING & CONTINUATION	GM	GW	WBR
40	12/1/08	CRN 07127-12823, REV: (B4) VALVE POSITION & FUNCTION	GM	GW	DC
41	3/16/09	CRN 07127-12930, REV/DEL: (F5-F6) VALVES & PIPING	GM	PDB	MW
42	11/13/12	EC249983, DEL: (D6) PUMPS	GM	MZ	DG
43	6/24/15	EC283690, ADD: (F3-G3,F4-G4) PIPING, VALVES & CONTINUATIONS, REV: (G3) VALVE TYPE	GM	JG	SHC
44	9/29/15	EC281987, ADD: (C5,G5) LOCATION FOR UNDERGROUND PIPE	GM	JG	SHC

REFERENCE DRAWINGS
 PIPE, VALVES & INSTRUMENT SYMBOLS
 VALVE LIST
 LINE LIST
 VALVE OPERATIONAL NUMBER INDEX
 INSTRUMENT INSTALLATION DETAILS
 INSTRUMENT LIST

NOTE:
 THIS DRAWING IS MADE FROM REV. 23
 OF DRAWING 2998-G-084

REVISION OF THIS DRAWING MAY REQUIRE UPDATE OF THE FOLLOWING DOCUMENTS:
 1. FSAR FIGURE 9.2-4
 2. FSAR FIGURE 9.2-5
 3. FSAR FIGURE 9.2-6
 4. FSAR FIGURE 9.2-8

FLORIDA POWER & LIGHT COMPANY
 ST LUCIE PLANT
 1983 - 890 MW EXTENSION - UNIT 2
**FLOW DIAGRAM
 DOMESTIC & MAKE-UP WATER
 SYSTEMS**

RAYTHEON ENGINEERS & CONSTRUCTORS, INC
 SCALE: NONE
 DIV: MECH
 DR: D. CHEFFI
 CH: W. PELPHREY

APPROVAL
 DATE:
 2998-G-084
 SHEET
 44

D 47