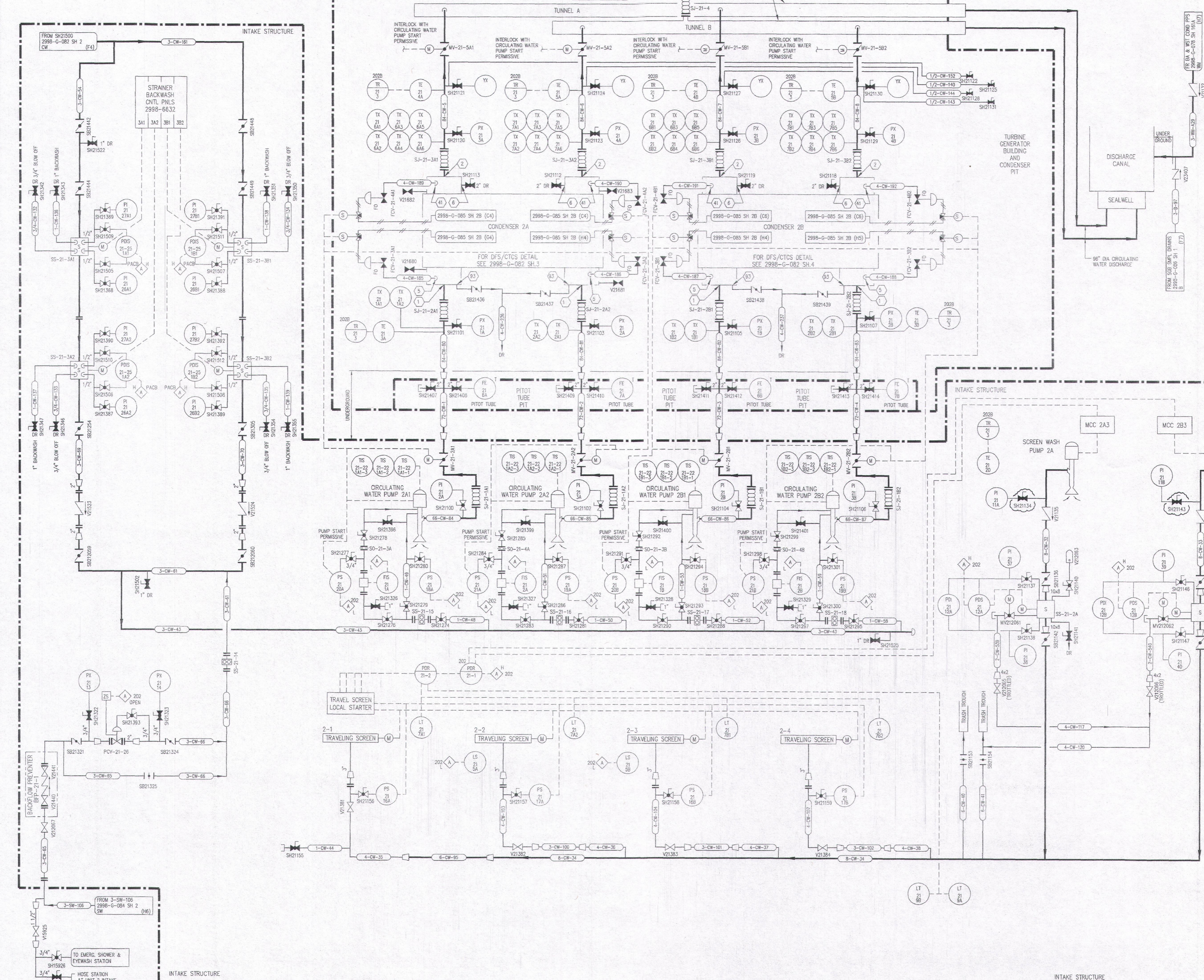


2998-G-082
SH 1



REVISIONS					
NO	DATE	DESCRIPTION	BY	CH	APPROVED
43	1/8/01	GRN 88012-8752; DEL: (G2-H7) PIPING.	GM	GW	MAM
44	1/29/05	GRN 03167-13036; ADD: (D3,D4 & D5) INSTRUMENT TAGS.	GM	MZ	RUF
45	4/20/06	GRN 04201-13740 REV: (C4 & C5) CONTINUATION COORDINATES.	GM	GW	PGS
46	4/8/11	EC271508 DEL: (C4 & C5) CONTINUATIONS.	GM	MZ	GMW PGS
47	6/10/11	EC246536 REV: (A1-E2) PIPING, VALVES AND EQUIPMENT.	GM	GW	DG
48	10/10/13	EC274370 DEL: (66) PIPE; REV: (E7-F7) PIPING, VALVES & INSTRUMENTS.	GM	GW	DG
49	12/16/13	EC274370 REV: (E7-F8) PIPING, VALVES & INSTRUMENTS.	GM	CW	DG
50	1/31/14	EC282888 ADD: (B7) REF. TO PIPE UNDER GROUND.	GM	GW	DG
51	9/17/14	EC246507 REV: (F3-G6) INSTRUMENTS AND LINE-UP.	GM	RAH	DG
52	10/29/14	EC282704 REV: (G8) REFERENCE DRAWINGS.	GM	RAH	DG
53	3/16/15	EC261426 REV: (H2-D7) INSTRUMENT CONFIGURATION.	GM	RAH	SHC
54	3/30/15	EC283557 ADD: (G1) VALVE.	GM	TW	DG
55	11/19/15	EC285240 DEL: (66) CHLORINE GRAB SAMPLE REV: (A6,B6) VALVES TO CLOSED.	GM	JG	DG
56	1/28/16	EC285563 REV: (E6,E7) VALVE POSITIONS.	JG	JG	JG

REFERENCE DRAWINGS
 PIPE, VALVE & INSTRUMENT SYMBOLS 2998-G-078 SH 100
 VALVE LIST 2998-A-051
 LINE LIST 2998-B-052
 VALVE OPERATIONAL NUMBER INDEX 2998-B-057A
 INSTRUMENT INSTALLATION DETAILS 2998-B-231
 INSTRUMENT LIST 2998-B-270C
 HYPOCHLORITE SYSTEM 2998-G-092 SH 3 & 4

NOTE:
 THIS DRAWING IS MADE FROM REV. 37
 OF DRAWING 2998-G-082

REVISION OF THIS DRAWING MAY REQUIRE UPDATE OF THE FOLLOWING DOCUMENT: FSAR FIGURE 9.2-1

**NUCLEAR SAFETY RELATED
IN PART ONLY**

FLORIDA POWER & LIGHT COMPANY
 ST LUCIE PLANT
 1983 - 890 MWe EXTENSION - UNIT 2

**FLOW DIAGRAM
CIRCULATING & INTAKE COOLING WATER
SYSTEM**

RAYTHEON ENGINEERS & CONSTRUCTORS, INC.

SCALE: NONE APPROVAL DATE: 2998-G-082
 DW: MEDL SHEET 1
 DR: CUNNINGHAM
 CH: W. PELFREY

D43