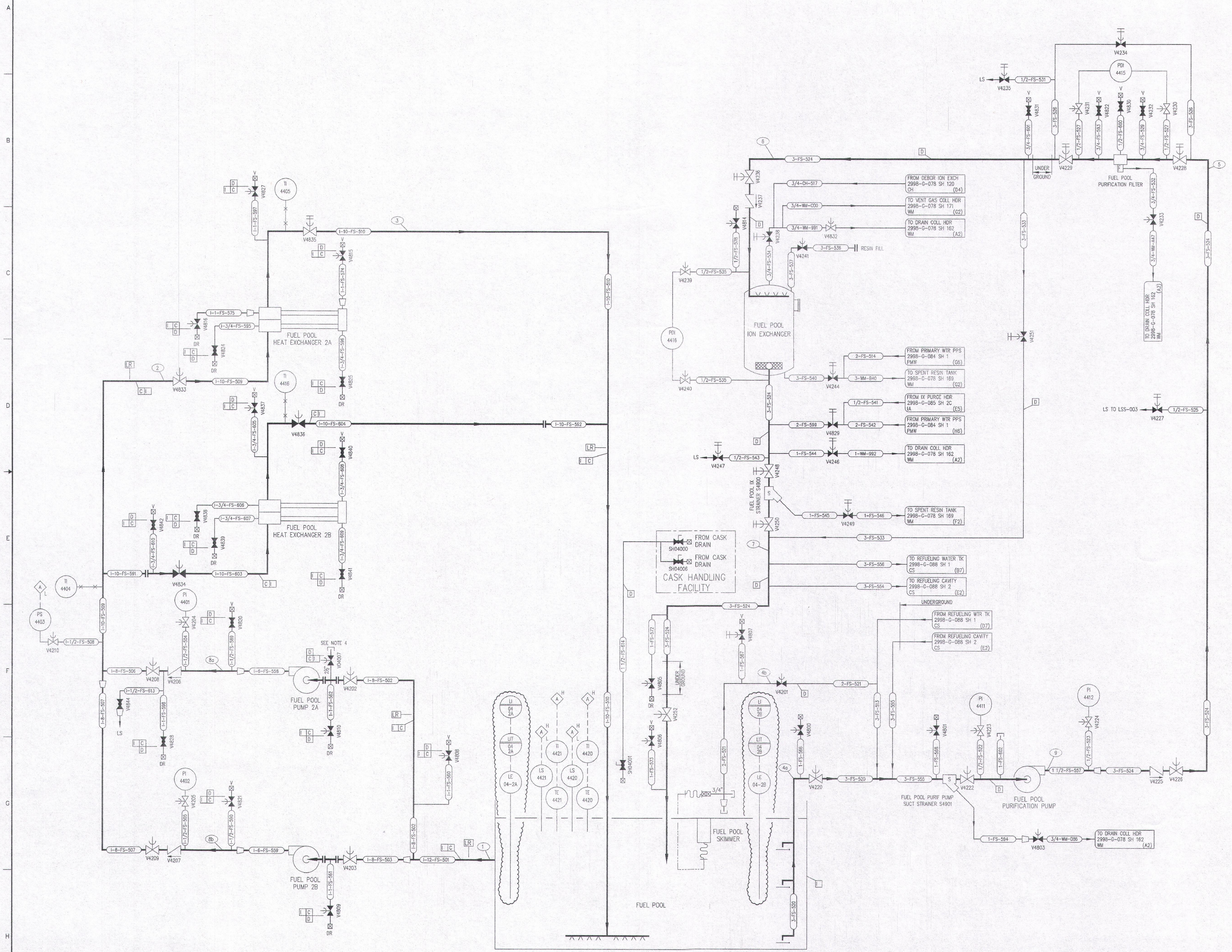


REVISIONS						
NO	DATE	DESCRIPTION	BY	CH	APPROVED	
5	7/24/95	DCR-SUM-94-002: REDRAWN	BB	HS		JIZ
6	5/15/01	DCR 010021 REV.(D3) CLASS FLAG LOCATION	GM	GW		SHC
7	7/18/01	DCR 010005 ADD: (G3,F3,D4 & D2) LICENSE RENEWAL FLAGS.	GM	HS		SHC
8	3/22/06	CRN 04201-13589 REV: (F5) VALVE POSITION.	GM	GW		SHC
9	1/7/11	EC248895 REV: (C3 & E3) EQUIPMENT TYPE.	GM	GW		DC
10	1/14/13	EC235563 & EC220440 ADD: (E4-G4) VALVES, PIPING & FACILITY.	GM	GW		DG
11	3/3/14	EC280898 ADD: (F4,F5 & B6) UNDERGROUND PIPING.	GM	MZ		DG
12	6/15/15	EC228191 ADD: (F3,E8) VALVE, PIPING AND NOTE 4.	GM	RAH		DG
13	9/3/15	EC280520 ADD: (F4-H4 & F5-H5) INSTRUMENTS.				A



- NOTES
1. THE FUEL POOL PURIFICATION SUCTION LINE (3-FS-520) HAS A 1/2" DIAMETER SYPHON BREAKER HOLE LOCATED 1'-2 1/2" BELOW THE NORMAL POOL WATER LEVEL.
 2. THE FUEL POOL COOLING RETURN LINE (1-10-FS-510) HAS A 1/2" DIAMETER SYPHON BREAKER HOLE LOCATED 1'-0" BELOW NORMAL POOL WATER LEVEL.
 3. THE FUEL POOL PURIFICATION RETURN LINE (3-FS-524) DOES NOT REQUIRE A SYPHON BREAKER SINCE THE PIPE TERMINATES AT A SUBMERGENCE ELEVATION THAT WOULD PRECLUDE EXCESSIVE DRAINAGE BY SYPHON ACTION.
 4. FLEX CONNECTION, 2 1/2" STORZ AND 2 1/2" CAP.

REFERENCE DRAWINGS

PIPE, VALVE & INSTRUMENT SYMBOLS 2998-G-078 SH 100
 VALVE LIST 2998-A-051
 LINE LIST 2998-B-052
 VALVE OPERATIONAL NUMBER INDEX 2998-B-057A
 INSTRUMENT INSTALLATION DETAILS 2998-B-231
 INSTRUMENT LIST 2998-E-270C

NOTE:
 THIS DRAWING IS MADE FROM REV. 4
 OF DRAWING 2998-G-078 SH 140.

REVISION OF THIS DRAWING MAY REQUIRE UPDATE OF THE FOLLOWING DOCUMENTS: FSAR FIGURE 9.1-6

**NUCLEAR SAFETY RELATED
 IN PART ONLY**

FLORIDA POWER & LIGHT COMPANY
 ST LUCIE PLANT
 1983 - 890 MWe EXTENSION - UNIT 2
**FUEL POOL
 FLOW DIAGRAM
 SYSTEM**

SCALE: NONE	APPROVAL:	DATE:
DW: MCH		2998-G-078
DR: B. BILIM		SHEET 140
CH: W. PELPHREY		13

D 42