

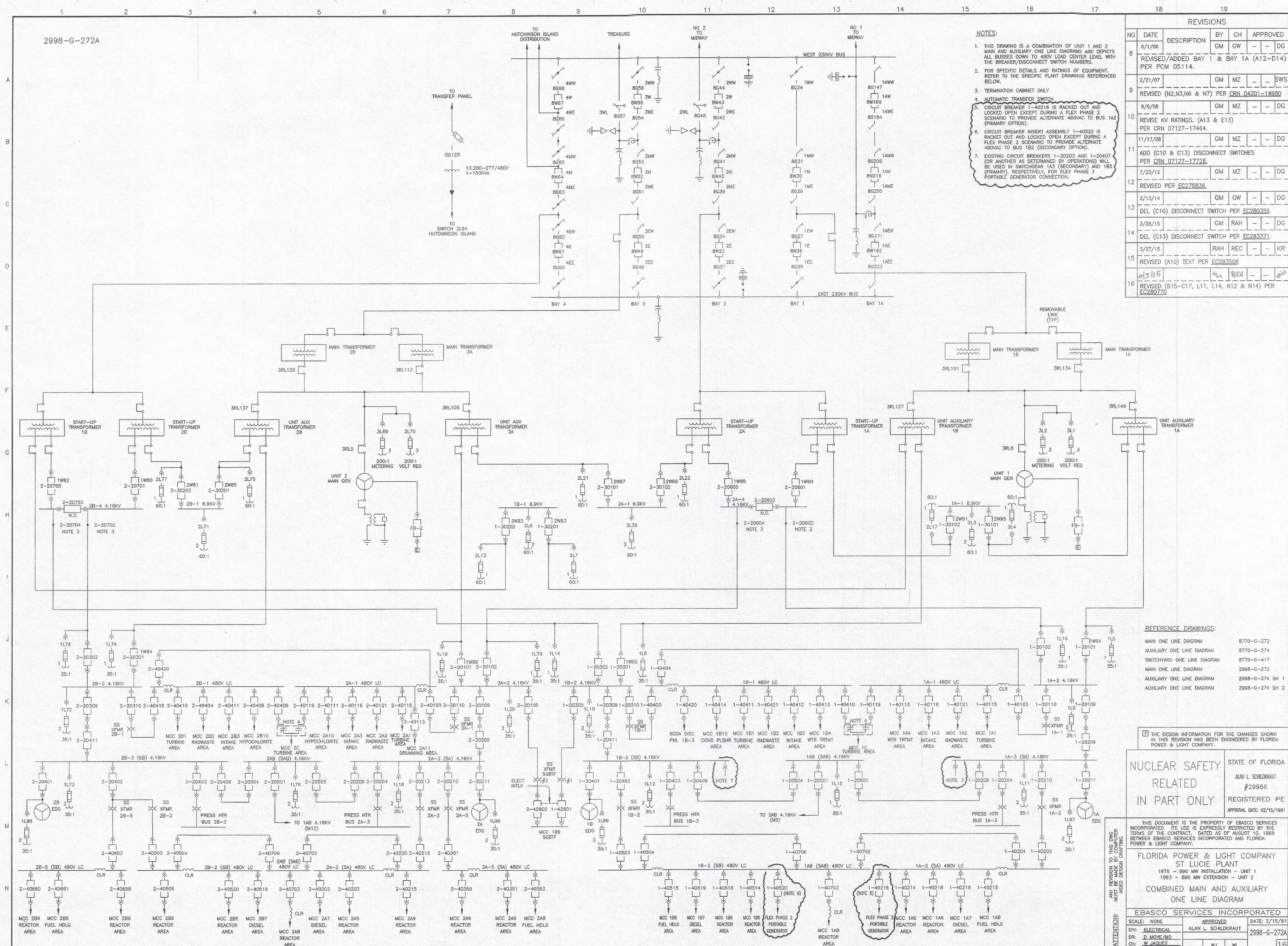
2998-G-272A

REVISIONS

NO	DATE	DESCRIPTION	BY	CH	APPROVED
8	6/1/06	REVIS/ADDED BAY 1 & BAY 1A (A12-D14) PER PCM 05114.	GM	GW	- - DG
9	2/21/07	REVISED (N2,N3,N6 & N7) PER CRN 04201-14880	GM	MZ	- - SWS
10	9/9/08	REVISE KV RATINGS. (A13 & E13) PER CRN 07127-17464.	GM	MZ	- - DG
11	11/17/08	ADD (C10 & C13) DISCONNECT SWITCHES PER CRN 07127-17728.	GM	MZ	- - DG
12	7/23/12	REVISED PER EC275836.	GM	MZ	- - DG
13	3/13/14	DEL (C10) DISCONNECT SWITCH PER EC280359.	GM	GW	- - DG
14	3/26/15	DEL (C13) DISCONNECT SWITCH PER EC283371.	GM	RAH	- - DG
15	3/27/15	REVISED (A10) TEXT PER EC283508	RAH	REC	- - KFR
16	4/5/15	REVISED (B15-C17, L11, L14, N12 & N14) PER EC280770	RAH	WJ	- - WJ

NOTES:

- THIS DRAWING IS A COMBINATION OF UNIT 1 AND 2 MAIN AND AUXILIARY ONE LINE DIAGRAMS AND DEPICTS ALL BUSES DOWN TO 480V LOAD CENTER LEVEL WITH THE BREAKER/DISCONNECT SWITCH NUMBERS.
- FOR SPECIFIC DETAILS AND RATINGS OF EQUIPMENT, REFER TO THE SPECIFIC PLANT DRAWINGS REFERENCED BELOW.
- TERMINATION CABINET ONLY
- AUTOMATIC TRANSFER SWITCH
- CIRCUIT BREAKER 1-40216 IS RACKED OUT AND LOCKED OPEN EXCEPT DURING A FLEX PHASE 2 SCENARIO TO PROVIDE ALTERNATE 480VAC TO BUS 1A2 (PRIMARY OPTION).
- CIRCUIT BREAKER INSERT ASSEMBLY 1-40520 IS RACKED OUT AND LOCKED OPEN EXCEPT DURING A FLEX PHASE 2 SCENARIO TO PROVIDE ALTERNATE 480VAC TO BUS 1B2 (SECONDARY OPTION).
- EXISTING CIRCUIT BREAKERS 1-20203 AND 1-20407 (OR ANOTHER AS DETERMINED BY OPERATIONS) WILL BE USED IN SWITCHGEAR 1A3 (SECONDARY) AND 1B3 (PRIMARY), RESPECTIVELY, FOR FLEX PHASE 3 PORTABLE GENERATOR CONNECTION.



REFERENCE DRAWINGS:

MAIN ONE LINE DIAGRAM	8770-G-272
AUXILIARY ONE LINE DIAGRAM	8770-G-274
SWITCHYARD ONE LINE DIAGRAM	8770-G-417
MAIN ONE LINE DIAGRAM	2998-G-272
AUXILIARY ONE LINE DIAGRAM	2998-G-274 SH 1
AUXILIARY ONE LINE DIAGRAM	2998-G-274 SH 2

THE DESIGN INFORMATION FOR THE CHANGES SHOWN IN THIS REVISION HAS BEEN ENGINEERED BY FLORIDA POWER & LIGHT COMPANY.

NUCLEAR SAFETY RELATED IN PART ONLY

STATE OF FLORIDA
 ALAN L. SCHILDKRAUT
 #29986
 REGISTERED PE
 APPROVAL DATE: 02/15/1991

THIS DOCUMENT IS THE PROPERTY OF EBASCO SERVICES INCORPORATED. ITS USE IS EXPRESSLY RESTRICTED BY THE TERMS OF THE CONTRACT, DATED AS OF AUGUST 10, 1988 BETWEEN EBASCO SERVICES INCORPORATED AND FLORIDA POWER & LIGHT COMPANY.

FLORIDA POWER & LIGHT COMPANY
 ST LUCIE PLANT
 1976 - 890 MW INSTALLATION - UNIT 1
 1983 - 890 MW EXTENSION - UNIT 2

COMBINED MAIN AND AUXILIARY ONE LINE DIAGRAM

EBASCO SERVICES INCORPORATED

SCALE: NONE APPROVED: DATE: 2/15/91
 DIV: ELECTRICAL ALAN L. SCHILDKRAUT
 DR: D. MOYER/MD
 CH: W. JACQUES

D 41