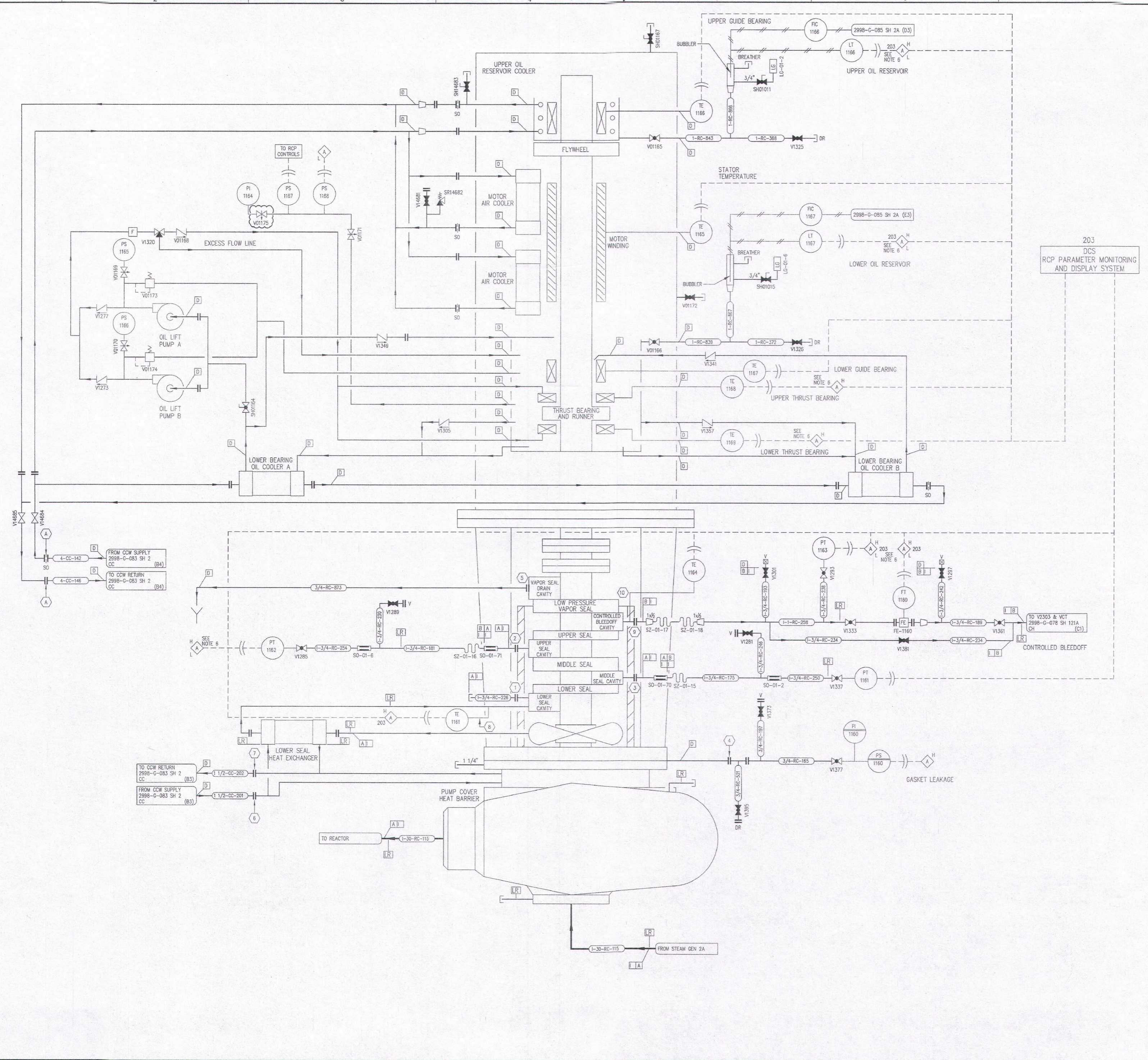


REVISIONS					
NO	DATE	DESCRIPTION	BY	CH	APPROVED
5	7/24/95		JCC	WJP	JUZ
DCR-SLM-94-057: REDRAWN					
6	12/21/95		GM	HS	TWS
PCM 161-285: ADD (E-2) DRAIN, DEL (E-2) CONTINUATION REV (E-3) LINE NUMBER.					
7	10/18/01		GM	GW	SHC
DCR 00009 ADD: (F2,F3,F4,E4,G4,H5,G5,F6 & E6) LICENSE RENEWAL FLAGS, (E8) NOTE.					
8	5/27/05		GM	MZ	SHC
REVISED PER PCM 05034					
9	10/5/07		GM	GW	DG
PCM 05035 DEL: (C3-C4) VIBRATION SWITCH & INSTRUMENTS.					
10	12/11/07		GM	GW	DG
QNL 04201-16598 REV: (F3) PIPING CONFIGURATION.					
11	3/1/11		GM	GW	DG
REVISED PER EC246506					
12	10/14/15		GM	RAH	DG
REVISED PER EC282251					
13	1/24/16		JCS	RAH	JAH
REVISED PER EC282251					



- NOTES
- ONE OF SIX STATOR TEMPERATURE ELEMENTS CHOSEN DURING PUMP TEST WILL BE MONITORED.
 - LOCAL PRESSURE TAPS ARE SUPPLIED IN THE PUMP SUCTION AND DISCHARGE FOR PUMP CALIBRATION.
 - LINE WITHOUT NUMBERS ARE PART OF THE PUMP MOTOR PACKAGE OR INSTRUMENT PACKAGES.
 - INSTALLED SPARE PRESSURE SWITCH.
 - PIPING/TUBING/FITTINGS ASSOCIATED WITH THE VAPOR SEAL DRAIN, GASKET LEAKAGE AND COMPONENT COOLING WATER ARE OUTSIDE THE SCOPE OF LICENSE RENEWAL.
 - ALARM SIGNAL IS PROCESSED IN THE DCS.

- REFERENCE DRAWINGS
- PIPE, VALVE & INSTRUMENT SYMBOLS 2998-G-078 SH 100
 - VALVE LIST 2998-A-051
 - LINE LIST 2998-B-052
 - VALVE OPERATIONAL NUMBER INDEX 2998-G-057A
 - INSTRUMENT INSTALLATION DETAILS 2998-B-231
 - INSTRUMENT LIST 2998-B-270C
 - REACTOR COOLANT PUMP OUTLINE 2998-457

NOTE:
THIS DRAWING IS MADE FROM REV. 4
OF DRAWING 2998-G-078 SH 111

REVISION OF THIS DRAWING MAY REQUIRE UPDATE OF THE FOLLOWING DOCUMENT: FSAR FIGURE 5.1-6

**NUCLEAR SAFETY RELATED
IN PART ONLY**

FLORIDA POWER & LIGHT COMPANY
ST LUCIE PLANT
1983 - 890 MWe EXTENSION - UNIT 2
FLOW DIAGRAM
REACTOR COOLANT PUMP
2A2

RAYTHEON ENGINEERS & CONSTRUCTORS, INC.		
SCALE: NONE	APPROVAL:	DATE:
DR: J. GIBB		2998-G-078
CH: W. PELPHEUREY		111B
		13