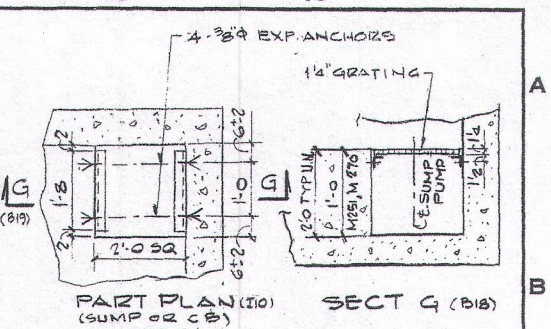


MANHOLE OR HANDHOLE NO.	SYSTEM DESIG.	LOCATION ON DWG.	SUMP	TO	INVERT EL. AT MH OR NH	INVERT EL. AT CONNECTION	INVERT EL. AT CB OR OTHER STRUCT.	BOTTOM EL. OF SUMP	REMARKS
M201	SA B	G2	✓	4 φ PVC	10.17	6.75	---	10.00	
M202	SA	G4	✓	4 φ PVC	9.17	5.93	---	9.00	
M203	SA	G4	✓	4 φ PVC	9.17	6.47	---	9.00	
M204	SA	G2	✓	4 φ PVC	10.17	7.00	---	10.00	
M205	SA B	I4	✓	4 φ PVC	10.17	10.12	---	10.00	
M206	---	I5	✓	4 φ PVC	10.17	9.80	---	10.00	
M207	---	I5	✓	4 φ PVC	10.17	9.75	---	10.00	
M208	SA	D3	✓	4 φ PVC	13.42	6.25	---	13.25	
M209	SA	D3	✓	4 φ PVC	7.17	6.26	---	7.00	
M210	---	E3	✓	ECB #2	10.17	---	5.73	10.00	
M211	---	D3	✓	CB #61	6.67	6.16	---	6.50	
M212	SA	I4	✓	CB #61	10.17	---	9.55	10.00	CHECK VALVE-DET'C(F10)
M213	SA B	K4	✓	CB #53	11.17	---	7.16	11.00	CHECK VALVE-DET'C(F10)
M214	SA B	J2	✓	4 φ PVC	11.17	9.42	---	11.00	
M215	SA B	K3	✓	4 φ PVC	9.67	9.43	---	9.50	
M216	---	I4	✓	4 φ PVC	11.17	10.00	---	11.00	
M217	---	K4	✓	4 φ PVC	10.17	7.33	---	10.00	
M218	---	K3	✓	4 φ PVC	11.17	9.48	---	11.00	
M219	---	K3	✓	4 φ PVC	9.67	9.67	---	9.50	
M220	---	K5	✓	CB #51	10.17	---	9.37	10.00	CHECK VALVE-DET'C(F10)
M221	---	K3	✓	4 φ PVC	10.17	9.55	---	10.00	
M222	---	K3	✓	4 φ PVC	9.67	9.57	---	9.50	
M223	SA	K3	✓	4 φ PVC	9.67	7.25	---	9.50	
M224	SA	L3	✓	CB #77	8.67	8.60	8.42	8.50	CHECK VALVE-DET'C(F10)
M225	SA	L3	✓	4 φ PVC	8.67	8.60	---	8.50	
M226	SA	D4	✓	4 φ PVC	7.84	5.56	---	7.67	
M227	SA	D4	✓	4 φ PVC	6.84	6.03	---	6.67	
M228	SA B	D3	✓	ECB #1	10.34	---	5.17	10.17	
M229	SA	D4	✓	4 φ PVC	10.17	5.62	---	10.00	
M230	SA B	D3	✓	4 φ PVC	10.17	5.36	---	10.00	
M231	SA	K3	✓	4 φ PVC	12.17	9.72	---	12.00	
M232	SA	K4	✓	4 φ PVC	12.17	9.90	---	12.00	
M233	---	H2	✓	CB #20	13.17	---	10.28	13.00	CHECK VALVE-DET'C(F10)
M234	---	H3	✓	4 φ PVC	11.17	11.14	---	11.00	
M235	---	I2	✓	4 φ PVC	13.17	11.70	---	13.00	
M236	SA	D3	✓	4 φ PVC	9.67	6.03	---	9.50	
M237	SA B	D2	✓	4 φ PVC	9.67	5.80	---	9.50	
M238	---	D3	✓	4 φ PVC	7.17	6.93	---	7.00	
M239	SA	E3	✓	4 φ PVC	10.17	6.37	---	10.00	
M240	---	D4	✓	4 φ PVC	6.84	5.88	---	6.67	
M241	SA B	J4	✓	4 φ PVC	10.17	9.87	---	10.00	
M242	---	D4	✓	4 φ PVC	10.17	5.70	---	10.00	
M243	---	H3	✓	4 φ PVC	11.17	6.75	---	11.00	
M244	---	D2	✓	4 φ PVC	11.67	6.65	---	11.50	
M245	---	E3	✓	CB #60	11.17	---	10.95	11.00	CHECK VALVE-DET'C(F10)
M246	---	E3	✓	CB #58	11.17	---	10.95	11.00	CHECK VALVE-DET'C(F10)
M247	---	E3	✓	4 φ PVC	11.17	10.11	---	11.00	
M248	---	D3	✓	4 φ PVC	10.17	10.03	---	10.00	
M249	---	C3	✓	4 φ PVC	11.17	11.09	---	11.00	
M250	---	C3	✓	M270	6.93	---	6.21	6.00	
M251	---	B3	✓	CB #105	13.67	---	12.67	13.00	PUMP PER DET'A'(D9)
M252	---	H2	✓	4 φ PVC	13.17	13.14	---	13.00	
M253	---	I2	✓	4 φ PVC	13.17	13.14	---	13.00	
M254	---	G3	✓	ECB #3	10.17	---	6.25	10.00	
M255	---	G3	✓	4 φ PVC	10.17	7.25	---	10.00	
M256	---	H5	✓	4 φ PVC	11.17	6.45	---	11.00	
M257	---	G4	✓	4 φ PVC	10.17	6.25	---	10.00	
M258	SA	E3	✓	4 φ PVC	13.42	6.29	---	13.25	
M259	---	H3	✓	4 φ PVC	13.17	13.07	---	13.00	
M260	---	G3	✓	4 φ PVC	10.17	6.80	---	10.00	
M261	SA B	G2	✓	CB #67	15.45	---	13.45	15.00	PUMP SEE DET'A'(D9)
M262	---	H1	✓	4 φ PVC	13.17	12.00	---	13.00	
M263	---	H3	✓	4 φ PVC	13.17	11.04	---	13.00	
M264	---	G4	✓	4 φ PVC	9.17	6.45	---	9.00	
ECB #1	---	D3	✓	CB #65	12.00	---	12.00	3.00	PUMP SEE DET'A'(D9)
M265	SA B	D3	✓	4 φ PVC	9.67	6.05	---	9.50	
M266	SA	G3	✓	4 φ PVC	10.17	6.97	---	10.00	
M267	SA	G3	✓	4 φ PVC	10.17	6.94	---	10.00	
M268	---	E3	✓	4 φ PVC	10.17	5.18	---	10.00	
M269	---	C3	✓	4 φ PVC	11.17	11.14	---	11.00	
M270	---	C3	✓	ECB #96	12.50	---	12.50	6.00	PUMP SEE DET'A'(D9)
M271	---	B3	✓	M251	10.17	10.14	---	10.00	
ECB #2	---	D2	✓	CB #70	12.00	---	12.00	4.00	PUMP SEE DET'A'(D9)
ECB #3	---	H5	✓	CB #56	12.00	---	12.00	4.00	PUMP SEE DET'A'(D9)
M272	---	L3	✓	CB #100	10.17	---	8.83	10.00	CHECK VALVE-DET'C(F10)
M273	---	N10	✓	CB #31	15.00	---	15.00	10.67	PUMP SEE DET'A'(D9)
M274	---	C3	✓	4 φ PVC	12.17	11.41	---	12.00	
M275	SA	C4	✓	4 φ PVC	12.17	11.41	---	12.00	
M276	SA	B4	✓	4 φ PVC	12.17	11.80	---	12.00	
M277	SA	B4	✓	4 φ PVC	12.17	11.80	---	12.00	
M278	SA	B4	✓	CB #106	12.17	11.80	---	12.00	CHECK VALVE-DET'C(F10)
M279	SA	J5	✓	CB #52	13.42	---	13.21	13.25	CHECK VALVE-DET'C(F10)
M280	SA	J5	✓	4 φ PVC	13.42	13.35	---	13.25	
M290	---	H5	✓	4 φ PVC	11.17	11.02	---	11.00	
M291	---	D2	✓	ECB #2	6.67	---	6.99	6.50	
M282	NA	K9	✓	DISCH CANAL	10.84	---	---	10.67	CHECK VALVE-DET'C(F10)



NOTES:
ALL ANGLES TO BE 3"x3" EXPANSION ANCHORS TO HAVE 2" HORIZONTAL TO BE SECURED WITH 1/2" STUDS & SLIPS
INSTALLATION FOR SUMP PUMP

- ELECTRICAL MANHOLE OR HANDHOLE WITH SUMP
- ELECTRICAL MANHOLE OR HANDHOLE
- CATCH BASIN (STORM DRAINAGE)
- CO - CLEAN OUT
- ELECTRICAL MANHOLE DRAIN PIPE AND DIRECTION OF FLOW
- PUMPED DRAIN LINE AND DIRECTION OF FLOW
- ELECTRICAL MANHOLE DRAIN CATCH BASIN
- EXISTING CATCH BASIN

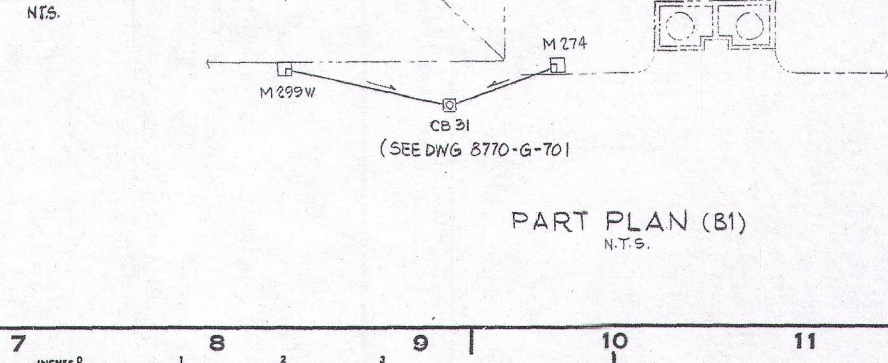
QUANTITIES (NET BY FIELD UNLESS NOTED)

4 φ PVC PIPE SCH 40 2600 LIN FT
 1 1/2 φ PVC PIPE SCH 40 330 LIN FT
 1/2 HP SUMP PUMP (FP #L#161-316) TO BE SUPPLIED BY FPL # CO 7-REQ'D
 6" WELDED FRAME & SOLID COVER CAT. NO. RG013 OR EQUAL 6-REQ'D
 30" C.I. SOLID COVER & FRAME-FLOCKHART FOUNDRY CO. TYPE 612-H-6177 OR EQUAL 5-REQ'D
 CHECK VALVE ZURN Z-1081 4" OR EQUAL 13-REQ'D
 #8 REBAR (GRADE 60) ASTM A-615 (BY FIELD) 5000 LIN FT
 CONC. CLASS "A" 4000 PSI 29 CU YD

NOTES:
GRAVITY DRAIN PIPES TO BE 4 φ PVC SCH 40
PUMPED DRAIN LINES TO BE 1 1/2 φ PVC SCH 40, SEE DET'A'(D9)
PUMP SHALL BE FPL STANDARD 1/2 HP SUMP PUMP #161-316
FOR TYPICAL INSTALLATION OF SUMP PUMP REFER TO FPL #L STANDARD UZ-3
QUANTITIES GIVEN ARE INVERT ELEVATIONS FOR CATCH BASIN DRAIN PIPE SEE DWG 2998-G-483 ELECTRICAL DRAINAGE PIPE SLOPE = 0.005'/FT MIN

REFERENCE DRAWINGS:
 LIST OF DRAWINGS 2998-A-146
 YARD DUCT RUNS & LIGHTING SH1 (ELEC) 2998-G-407
 SITE GRADING & DRAINAGE SH1 2998-G-463
 SITE GRADING & DRAINAGE SH2 2998-G-464
 MANHOLE & HANDHOLE DETS (ELEC) 2998-G-348
 ELECTRICAL MANHOLE DET - M4 R 2998-G-627
 ELECTRICAL MANHOLE DETS-M4 R SH 1,2&3 2998-G-623
 7.5 ELECTRICAL MANHOLE DET-M4 R 2998-S-619
 ELEC MANHOLE DETAILS (ELEC) 2998-B-348

MANHOLE	SYSTEM DESIG.	LOCATION ON DWG.	SUMP	TO	INVERT EL. AT MANHOLE	INVERT EL. AT CONNECTION	INVERT EL. AT CB OR OTHER STRUCT.	BOTTOM EL. OF SUMP	REMARKS
M296	---	C2	✓	4 φ PVC	11.17	BY FIELD	---	10.83	CHECK VALVE-DET'C(F10)
M297	---	C2	✓	3 φ PVC	11.17	---	---	10.83	CHECK VALVE-DET'C(F10)
M298	SA	D2	✓	4 φ PVC	12.17	5.80	---	12.00	
M299 V	SA	D2	✓	4 φ PVC	9.17	9.13	---	9.00	
M299 X	SA	D2	✓	4 φ PVC	10.17	10.15	---	10.00	
M299 Y	SA	D2	✓	CB #70	10.17	10.00	---	10.00	CHECK VALVE-DET'C(F10)
M299 Z	SA B	D2	✓	4 φ PVC	10.17	10.12	---	10.00	
M299 W	---	M9	✓	CB #31	15.00	---	15.00	10.67	PUMP SEE DET'A'(D9)



NO.	DATE	REVISION	BY	CHK.	APPROVED	NO.	DATE	REVISION	BY	CHK.	APPROVED
1	6-14-85					2	6-14-85	ADD: (REVISE) REV. (REVISE) SH 1	NH	JL	JL
3	3-14-87					4	10-6-88	ADD: (REVISE) REV. (REVISE) SH 2	NH	JL	JL
5	10-6-88					6	10-6-88	ADD: (REVISE) REV. (REVISE) SH 2	NH	JL	JL
7	1/4/89	CRN 02048-9331: ADD: REF DWG NO. (N3-N10, L13)	CG	GW		8	3/12/15	EC28380 ADD(FI) NOTE	RAH	GM	SR
9	9/28/15	EC284443 REV (E10-F11) DET 'C'	RAH	JL		10	9/28/15	ADD: (REVISE) REV. (REVISE) SH 1	NH	JL	JL
11	1/4/89	CRN 02048-9331: ADD: REF DWG NO. (N3-N10, L13)	CG	GW		12					
13						14					
15						16					
17						18					
19						20					

THIS DOCUMENT IS THE PROPERTY OF EBASCO SERVICES INCORPORATED. ITS USE IS EXPRESSLY RESTRICTED BY THE TERMS OF THE CONTRACT, DATED AS OF 9-1-75 BETWEEN EBASCO SERVICES INCORPORATED AND FLORIDA POWER & LIGHT COMPANY.

**FLORIDA POWER & LIGHT COMPANY
ST LUCIE PLANT**
1983 - 890000 KW EXTENSION - UNIT NO.2

ELECTRICAL MANHOLE & HANDHOLE DRAINAGE SYSTEM

EBASCO SERVICES INCORPORATED

SCALE: 1" = 4' DATE: 9/5/15

APPROVED: [Signature] DATE: 9/5/15

DRAWN BY: S. SLAWOV
CHECKED BY: J. GOYAL

2998-G-486

NO. DATE REVISION BY CHK. APPROVED