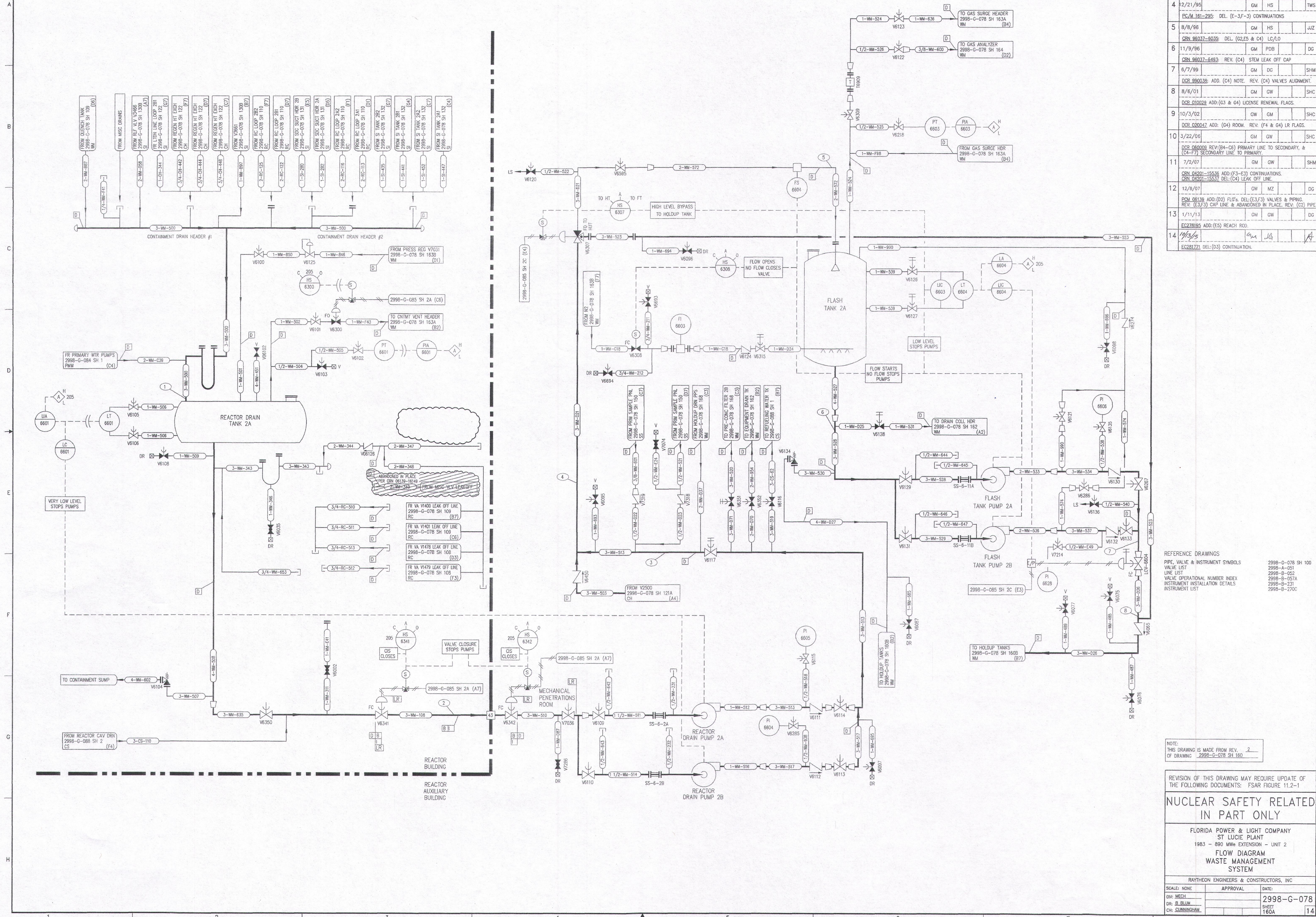


REVISIONS					
NO	DATE	DESCRIPTION	BY	CH	APPROVED
3	7/24/95		BB	DWC	JJZ
DCR-31M-84-067; REDRAWN					
4	12/21/95		GM	HS	TWS
EG/M 161-295; DEL. (E-3-F-3) CONTINUATIONS					
5	8/8/96		GM	HS	JJZ
CRN 96037-6035; DEL. (G2,E5 & C4) LC/LD					
6	11/9/96		GM	PDB	DG
CRN 96037-6493; REV. (C4) STEM LEAK OFF CAP					
7	6/7/99		GM	DG	SHM
DCR 990038; ADD. (C4) NOTE. REV. (C4) VALVES ALIGNMENT.					
8	8/6/01		GM	GW	SHC
DCR 010028; ADD. (G3 & G4) LICENSE RENEWAL FLAGS.					
9	10/3/02		GM	GW	SHC
DCR 020042; ADD. (G4) ROOM. REV. (F4 & G4) LR FLAGS.					
10	3/22/06		GM	GW	SHC
DCR 080008; REV. (B4-C3) PRIMARY LINE TO SECONDARY, & (C4-F7) SECONDARY LINE TO PRIMARY.					
11	7/2/07		GM	GW	SHW
CRN 04201-15536; ADD. (F3-E3) CONTINUATIONS. CRN 04201-15537; DEL. (C4) LEAK OFF LINE.					
12	12/8/07		GM	MZ	DG
PCM 08139; ADD. (D2) FLG'S. DEL. (E3,F3) VALVES & PIPING. REV. (E3,F3) CAP LINE & ABANDONED IN PLACE. REV. (C2) PIPE					
13	1/11/13		GM	GW	DG
EG228195; ADD. (E5) REACH ROD.					
14	4/13/15		GM	JG	JJZ
EG281721; DEL. (D3) CONTINUATION.					



REFERENCE DRAWINGS  
 PIPE, VALVE & INSTRUMENT SYMBOLS 2998-G-078 SH 100  
 VALVE LIST 2998-A-051  
 LINE LIST 2998-B-052  
 VALVE OPERATIONAL NUMBER INDEX 2998-B-057A  
 INSTRUMENT INSTALLATION DETAILS 2998-B-231  
 INSTRUMENT LIST 2998-B-270C

NOTE:  
 THIS DRAWING IS MADE FROM REV. 2  
 OF DRAWING 2998-G-078 SH 160.

REVISION OF THIS DRAWING MAY REQUIRE UPDATE OF  
 THE FOLLOWING DOCUMENTS: FSAR FIGURE 11.2-1

**NUCLEAR SAFETY RELATED  
 IN PART ONLY**

FLORIDA POWER & LIGHT COMPANY  
 ST LUCIE PLANT  
 1983 - 890 MWe EXTENSION - UNIT 2  
**FLOW DIAGRAM  
 WASTE MANAGEMENT  
 SYSTEM**

RAYTHEON ENGINEERS & CONSTRUCTORS, INC.  
 SCALE: NONE APPROVAL DATE:  
 DIV: MECH 2998-G-078  
 DR: B. BLUM SHEET 160A 14  
 CH: CLANNINGHAM

D24