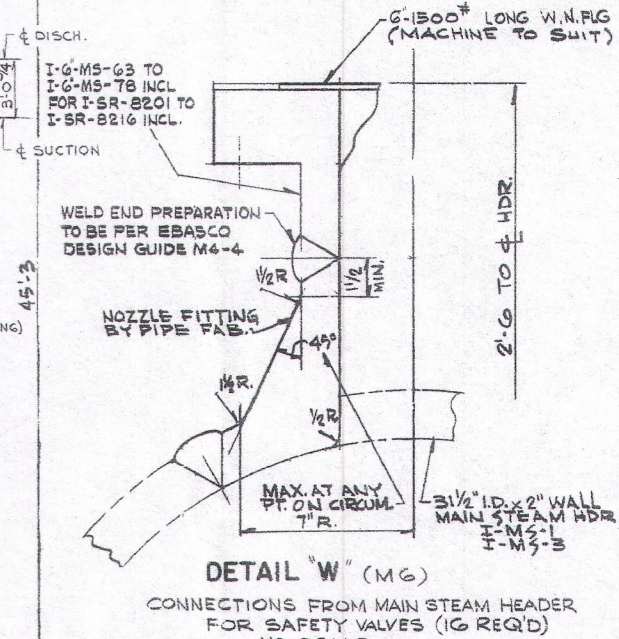


NO	DATE	REVISION	BY	CHK	APPROV
4	10-20-83	INCOGN 513, 307, CON 530, 023 REVISED (1) DIAMETER, (2) 2" DIA, (3) VALVE (4) INSTR. (5) INSTR. (6) INSTR. (7) INSTR. (8) INSTR. (9) INSTR. DIM. (10) INSTR. (11) INSTR. (12) INSTR. INSTR. (13) INSTR. (14) INSTR. (15) INSTR.	JK	SR	JR
5	3-18-83	REVISED (1) INSTR. (2) INSTR. (3) INSTR. INSTR. (4) INSTR. (5) INSTR. (6) INSTR. INSTR. (7) INSTR. (8) INSTR. (9) INSTR. INSTR. (10) INSTR. (11) INSTR. (12) INSTR.	JK	SR	JR
6	1-20-83	REVISED (1) DIA DIS 811 EL 6, 11, 16, 17 M (12) INSTR. (13) INSTR. (14) INSTR. INSTR. (15) INSTR. (16) INSTR. (17) INSTR. INSTR. (18) INSTR. (19) INSTR. (20) INSTR.	DIC	AS	JR



LINE NO	FOR SAFETY VALVE	LINE NO	FOR SAFETY VALVE
I-6-MS-63	INLET V-8201	I-6-MS-71	INLET V-8209
I-6-MS-64	INLET V-8202	I-6-MS-72	INLET V-8210
I-6-MS-65	INLET V-8203	I-6-MS-73	INLET V-8211
I-6-MS-66	INLET V-8204	I-6-MS-74	INLET V-8212
I-6-MS-67	INLET V-8205	I-6-MS-75	INLET V-8213
I-6-MS-68	INLET V-8206	I-6-MS-76	INLET V-8214
I-6-MS-69	INLET V-8207	I-6-MS-77	INLET V-8215
I-6-MS-70	INLET V-8208	I-6-MS-78	INLET V-8216

NO.	DATE	REVISION	BY	CHK	APPROV
7	10/8/83	REVISED (1) DIA DIS 811 EL 6, 11, 16, 17 M (2) INSTR. (3) INSTR. (4) INSTR. (5) INSTR. (6) INSTR. (7) INSTR. (8) INSTR. (9) INSTR. (10) INSTR. (11) INSTR. (12) INSTR. (13) INSTR. (14) INSTR. (15) INSTR. (16) INSTR. (17) INSTR. (18) INSTR. (19) INSTR. (20) INSTR.	JAS	AS	JR
8	5/1/83	APPRO BY A. J. UGLOW FL PER 51840 FROM 51828A REV. (1) CH. DIM. (2) INSTR. FOR 2-60 INS. REV. (3) INSTR. (4) INSTR. TAG NO.	JT	PE	JR
9	11/3/84	FL PER 020-233 (REV. (1) WALL DISCH. (2) INSTR. (3) STRAINER)	GM	MS	JR
10	7/1/84	FL PER 020-233 DEL. (E) DIS. (1) INSTR. (2) INSTR. (3) INSTR. (4) INSTR. (5) INSTR. (6) INSTR. (7) INSTR. (8) INSTR. (9) INSTR. (10) INSTR. (11) INSTR. (12) INSTR. (13) INSTR. (14) INSTR. (15) INSTR. (16) INSTR. (17) INSTR. (18) INSTR. (19) INSTR. (20) INSTR.	PE	SD	JR
11	11/2/84	FL PER 020-233 DEL. (E) DIS. (1) INSTR. (2) INSTR. (3) INSTR. (4) INSTR. (5) INSTR. (6) INSTR. (7) INSTR. (8) INSTR. (9) INSTR. (10) INSTR. (11) INSTR. (12) INSTR. (13) INSTR. (14) INSTR. (15) INSTR. (16) INSTR. (17) INSTR. (18) INSTR. (19) INSTR. (20) INSTR.	GM	JW	JR
12	11-5-86	FL PER 020-233 DEL. (E) DIS. (1) INSTR. (2) INSTR. (3) INSTR. (4) INSTR. (5) INSTR. (6) INSTR. (7) INSTR. (8) INSTR. (9) INSTR. (10) INSTR. (11) INSTR. (12) INSTR. (13) INSTR. (14) INSTR. (15) INSTR. (16) INSTR. (17) INSTR. (18) INSTR. (19) INSTR. (20) INSTR.	MS	GM	JR
13	7/1/89	FL PER 020-233 REV. (1) INSTR. (2) INSTR. (3) INSTR. (4) INSTR. (5) INSTR. (6) INSTR. (7) INSTR. (8) INSTR. (9) INSTR. (10) INSTR. (11) INSTR. (12) INSTR. (13) INSTR. (14) INSTR. (15) INSTR. (16) INSTR. (17) INSTR. (18) INSTR. (19) INSTR. (20) INSTR.	JR	JW	JR

NOTES

1. FOR GENERAL NOTES SEE DWG 2998-G-149 SH. 1 OF 2

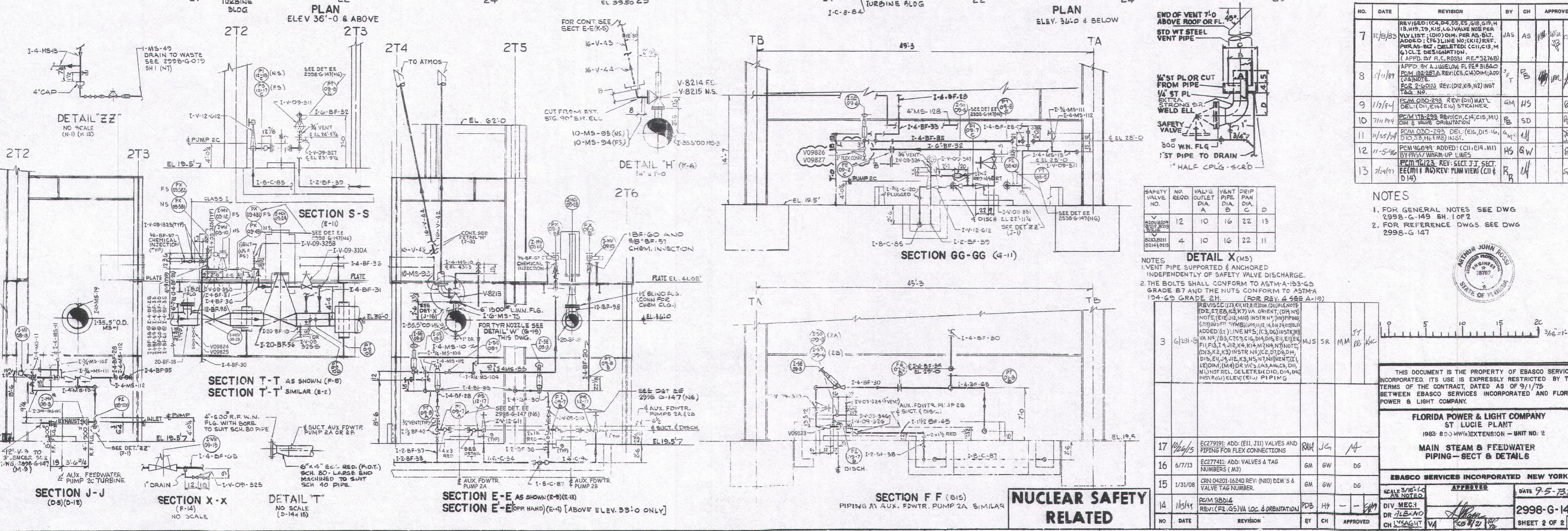
2. FOR REFERENCE DWGS SEE DWG 2998-G-147

SAFETY VALVE NO.	NO. REQ'D.	VALVE INLET DIA.	PIPE DIA.	DRIP PAN DIA.
8201	12	10	16	22
8202	4	10	16	22

DETAIL X (M5)

1. INLET PIPE SUPPORTED & ANCHORED INDEPENDENTLY OF SAFETY VALVE DISCHARGE.

2. THE BOLTS SHALL CONFORM TO ASTM A-193-63 GRADE B7 AND THE NUTS CONFORM TO ASTM A-194-69 GRADE 2H. (FOR REV. 4 SEE A-12)



**NUCLEAR SAFETY RELATED**

THIS DOCUMENT IS THE PROPERTY OF EBASCO SERVICES INCORPORATED. ITS USE IS EXPRESSLY RESTRICTED BY THE TERMS OF THE CONTRACT DATED AS OF 9/1/75 BETWEEN EBASCO SERVICES INCORPORATED AND FLORIDA POWER & LIGHT COMPANY.

FLORIDA POWER & LIGHT COMPANY  
ST. LUCIE PLANT  
1982 800 MW EXTENSION - UNIT NO. 2  
**MAIN STEAM & FEEDWATER PIPING - SECT & DETAILS**

NO.	DATE	REVISION	BY	CHK	APPROV
17	12/2/85	EC279191; ADD: (E) (11) VALVES AND PIPING FOR FLEX CONNECTIONS	RMR	JG	JR
16	6/7/13	EC277411; ADD: VALVES & TAG NUMBERS (MS)	GM	GW	DG
15	3/13/08	CRN 04201-16240 REV. (NO) DIM'S & VALVE TAG NUMBER.	GM	GW	DG
14	11/30/93	FL PER 020-233 REV. (1) INSTR. (2) INSTR. (3) INSTR. (4) INSTR. (5) INSTR. (6) INSTR. (7) INSTR. (8) INSTR. (9) INSTR. (10) INSTR. (11) INSTR. (12) INSTR. (13) INSTR. (14) INSTR. (15) INSTR. (16) INSTR. (17) INSTR. (18) INSTR. (19) INSTR. (20) INSTR.	PDB	HY	JR

DATE 9-5-83

2998-G-149 SHEET 2 OF 2

021