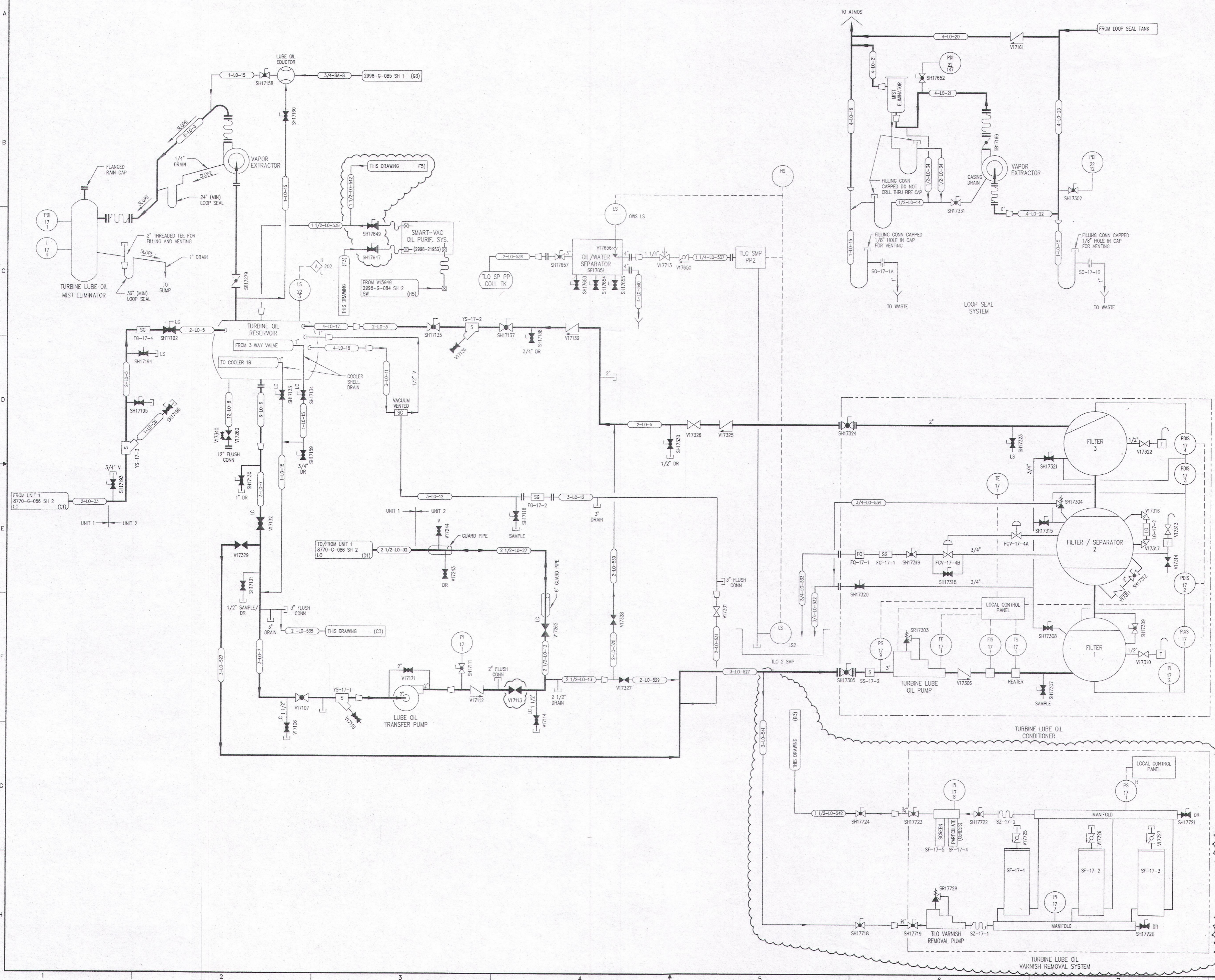


| REVISIONS | | | | | |
|--|----------|-------------|-----|----|----------|
| NO | DATE | DESCRIPTION | BY | CH | APPROVED |
| 25 | 7-24-95 | | DAC | HS | JUZ |
| DCR-SLM-94-067: REDRAWN | | | | | |
| 26 | 1/22/96 | | GM | HS | JUZ |
| PCM 031-295: ADD: (B-1 THRU C-1) PIPING & EQUIP. DEL: (A-1 THRU C-1) PIPING, EQUIP & INST. | | | | | |
| 27 | 4/2/96 | | JGW | GM | JUZ |
| DCR-SLM-96-013: ADD: (D2) EQUALIZER VALVE V17340 | | | | | |
| 28 | 10/4/96 | | HS | GM | JRH |
| CRN 96037-6036: ADD: (D2,F4) VALVE MODE LC | | | | | |
| 29 | 8/25/97 | | GM | HS | VFR |
| DCR 96029: REV: (E1,F3) CONTINUATIONS | | | | | |
| 30 | 5/29/03 | | GM | GW | MAM |
| PCM 03055: ADD: (F2-F3) PIPING AND CONTINUATION, (C2-C3) PIPING, VALVES, EQUIPMENT AND CONTINUATION. | | | | | |
| 31 | 1/29/04 | | GM | GW | SHC |
| DCR 030037: REV: (C2) VALVE TAG NUMBER | | | | | |
| 32 | 2/4/05 | | GM | GW | HS |
| PCM 04010: ADD: (F2 & E5) DRAIN LINE, DRAIN LINE SIZE. DEL: (F2) FLUSH CONN, REV: (F4) LINE SIZE. | | | | | |
| 33 | 8/12/08 | | GM | GW | DG |
| CRN 04201-16940: ADD: (C3) DRAWING REFERENCE. | | | | | |
| 34 | 12/12/08 | | GM | GW | DG |
| PCM 06044: ADD: (C4, B5-F5) EQUIPMENT, VALVES & PIPING. | | | | | |
| 35 | 4/8/11 | | GM | MZ | QMW |
| EC23669: ADD: (B6) ELIMINATOR, VALVE INSTRUMENT AND PIPING CONFIGURATION. | | | | | |
| 36 | 10-17-15 | | GM | MZ | QMW |
| EC28043: ADD: (F5-H7) PIPING, VALVES & EQUIPMENT. REV: (B3-C3) VALVE POSITIONS AND CONTINUATION, (F4) VALVE POSITION. | | | | | |



- REFERENCE DRAWINGS
- PIPE, VALVES & INSTRUMENT SYMBOLS 2998-G-076 SH 100
 - VALVE LIST 2998-A-051
 - LINE LIST 2998-B-052
 - VALVE OPERATIONAL NUMBER INDEX 2998-B-057A
 - INSTRUMENT INSTALLATION DETAILS 2998-B-231
 - INSTRUMENT LIST 2998-B-230
 - TURBINE LUBE OIL SYSTEM 2998-G-086 SH 3
 - EH FLUID SYSTEM & LUBE DIAGRAM 2998-31
 - GENERAL LOOP SEAL SYSTEM 2998-38
 - LOOP SEAL SYSTEM 2998-110

NOTE:
THIS DRAWING IS MADE FROM REV. 24
OF DRAWING 2998-G-086, SH 2

REVISION OF THIS DRAWING MAY REQUIRE UPDATE OF
THE FOLLOWING DOCUMENT: FSAR FIGURE 10.2-10

FLORIDA POWER & LIGHT COMPANY
ST LUCIE PLANT
1983 - 890 MWe EXTENSION - UNIT 2
FLOW DIAGRAM
TURBINE LUBE OIL
SYSTEM

| RAYTHEON ENGINEERS & CONSTRUCTORS, INC | | |
|--|----------|------------|
| SCALE: NONE | APPROVAL | DATE: |
| DR: MCH | | 2998-G-086 |
| DR: B. CHIEFFI | | SHEET |
| CH: P. BERGERON | | 2 |

D 19