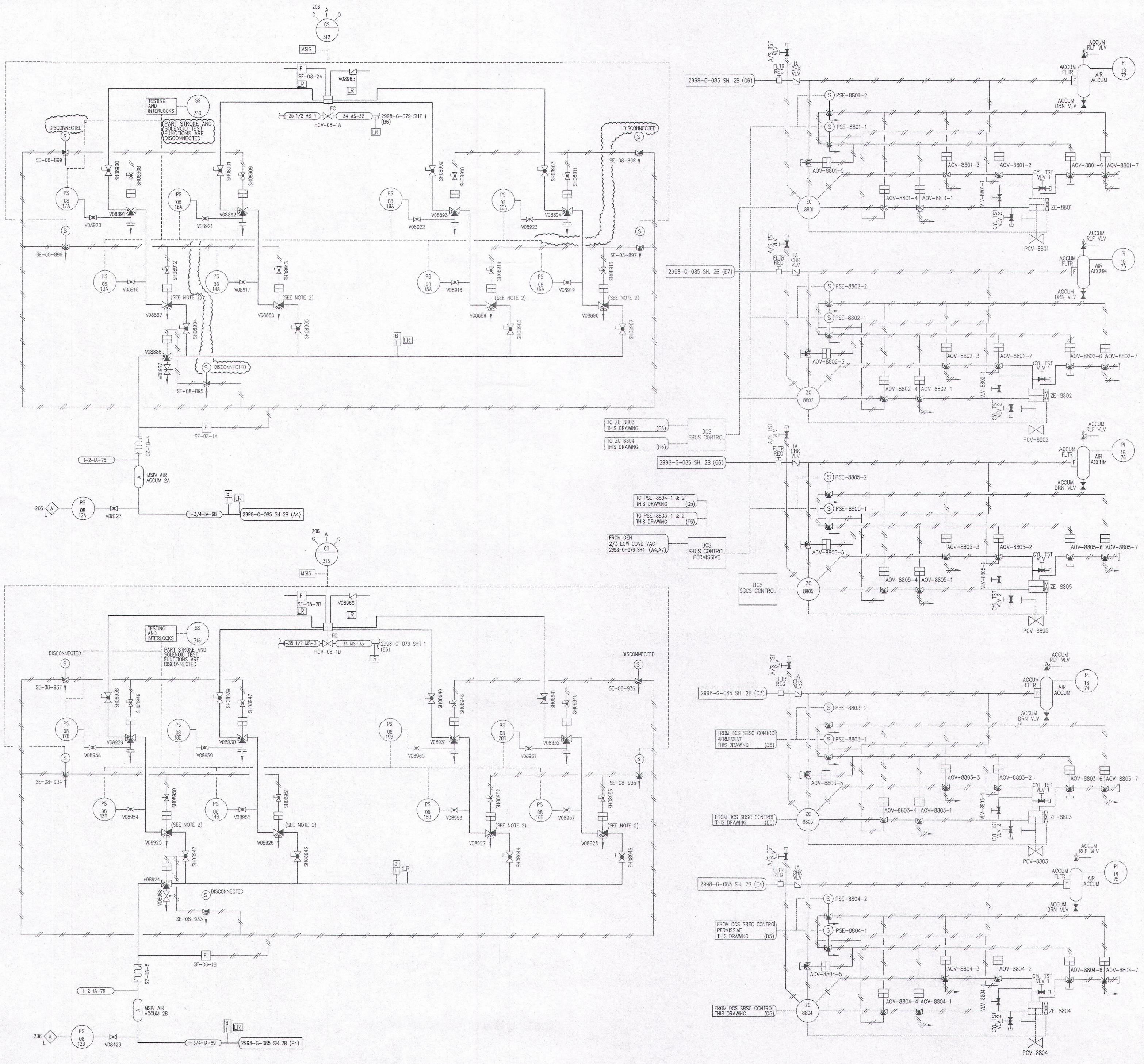


REVISIONS					
NO	DATE	DESCRIPTION	BY	CH	APPROVED
0	1/18/01	INITIAL ISSUE PER DCR 000086.	GM	GW	MAM
1	8/22/01	DCR 000101 ADD:(A3,B4,C4,D3,E3,E4,G4 & H3) LICENSE RENEWAL FLAGS.	GM	GW	SHC
2	11/13/12	EC249984 ADD:(A5-H7) PIPING & VALVE LINEUP. (FB) NOTE 3.	GM	GW	DG
3	10/15/15	EC284003 ADD/DEL:(E2-E3,F3-G3,F4-E5) ELECTRICAL SIGNALS AND DISCONNECT NOTES.	GM	JG	DG
4	10/15/15	EC284232 ADD/DEL:(A2-B2,B3-C3,B4-A5) DISCONNECT NOTES AND ELECTRICAL SIGNALS.	GM	JG	DG



- NOTES
- FOR GENERAL NOTES AND REFERENCES SEE 2998-G-079 SH1
 - ALL ACTUATOR SOLENOID AND PILOT VALVES ARE SHOWN IN THEIR UNACTUATED (SHIELD) STATE. THE PILOT VALVES NOTED WOULD NORMALLY BE IN THEIR ACTUATED STATE WHEN THE ASSOCIATED MSIV IS OPEN.
 - TURBINE BYPASS AND STEAM DUMP VALVES: ALL ACTUATOR SOLENOIDS AND PILOT VALVES ARE SHOWN IN THEIR STATE FOR PERMISSION TO THROTTLE. PERMISSIVE SOLENOIDS PSE-8801-1 THROUGH PSE-8802-1 ARE NORMALLY ENERGIZED. QUICK OPEN COMMAND SOLENOIDS PSE-8801-2 THROUGH PSE-8805-2 ARE NORMALLY DE-ENERGIZED.

REVISION OF THIS DRAWING MAY REQUIRE UPDATE OF THE FOLLOWING DOCUMENT: FSAR FIGURE 10.1-1g

NUCLEAR SAFETY RELATED

FLORIDA POWER & LIGHT COMPANY
ST. LUCIE PLANT
1983 - 890 MWe INSTALLATION - UNIT 2
FLOW DIAGRAM
MAIN STEAM

FLORIDA POWER & LIGHT COMPANY		
SCALE: NONE	APPROVAL	DATE: 1/18/01
DIV: MECH	MAM	2998-G-079
DR: H. SCHELMETZ		SHEET 7
CH: SW		4