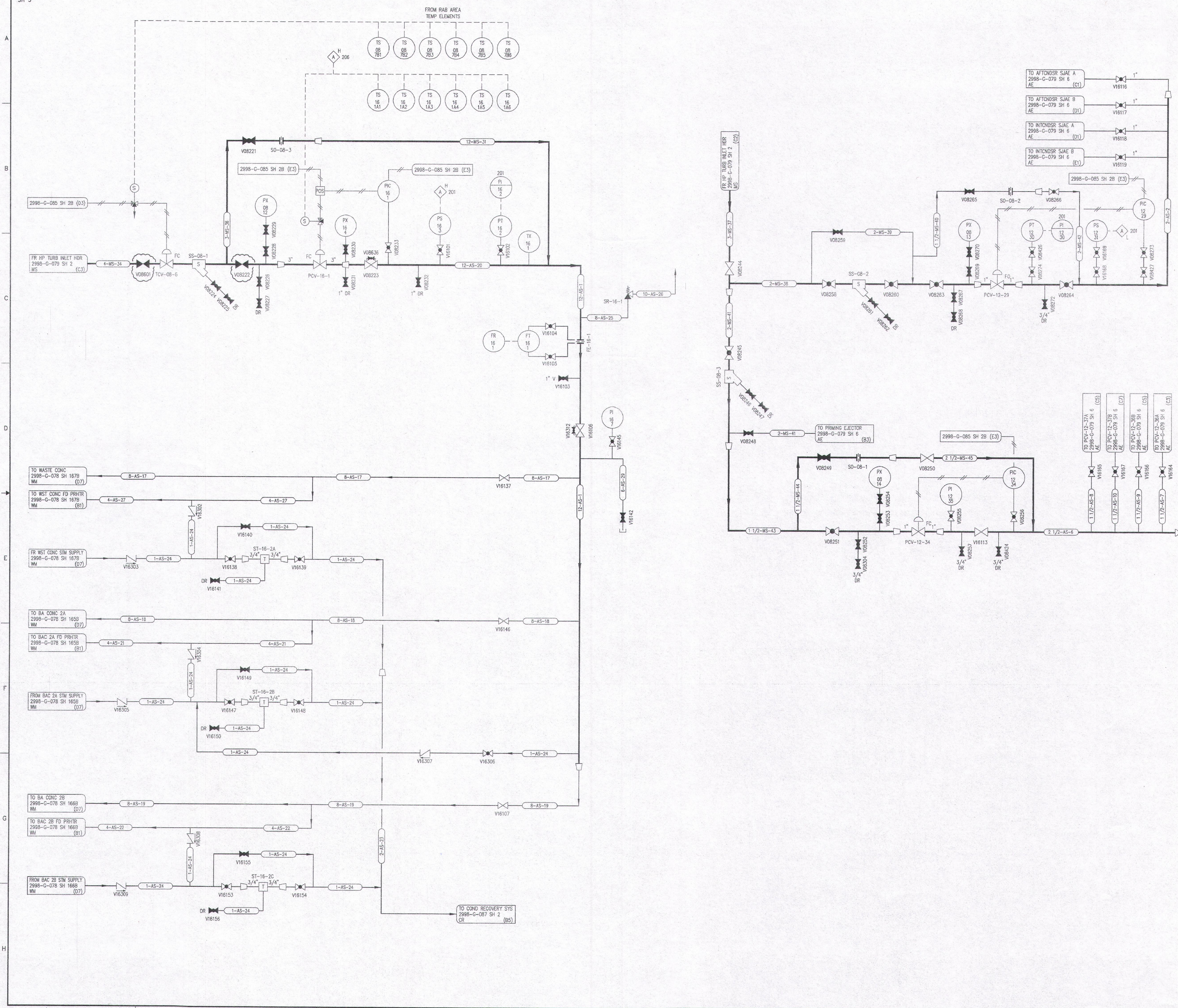


REVISIONS					
NO	DATE	DESCRIPTION	BY	CH	APPROVED
16	7/24/95		BB	WJF	JUZ
DOR-SUM-94-057 REDRAWN					
17	9/22/95		GM	HS	MAM
DOR-98012-8328 REV. (B7) CONTINUATION.					
18	1/14/13		GM	GW	DG
EC235563 & EC218866 DEL. (C1-C4) VALVES & PIPING. EC273498 DEL. (E4) VALV. REV. (D4-E4) PIPING.					
19	8/19/15		GM	JG	DG
EC226109 REV. (D7 & E7) PIPING ALIGNMENT.					
20	1/7/15		GM	JG	STC
EC284892 REV. (C2) VALVE POSITIONS.					



NOTE
FOR NOTES AND REFERENCE DWGS SEE 2998-G-079 SH 1

NOTE:
THIS DRAWING IS MADE FROM REV. 15
OF DRAWING 2998-G-079 SH 5

REVISION OF THIS DRAWING MAY REQUIRE UPDATE OF THE FOLLOWING DOCUMENT: FSAR FIGURE 10.1-1e

FLORIDA POWER & LIGHT COMPANY
ST LUCIE PLANT
1983 - 890 MW EXTENSION - UNIT 2
FLOW DIAGRAM
AUXILIARY STEAM
SYSTEM

RAYTHEON ENGINEERS & CONSTRUCTORS, INC

SCALE: NONE	APPROVAL	DATE:
DW: MECH		2998-G-079
DR: B. BILIM		SHEET
CH: M. PULPHEBY		5

20

D15