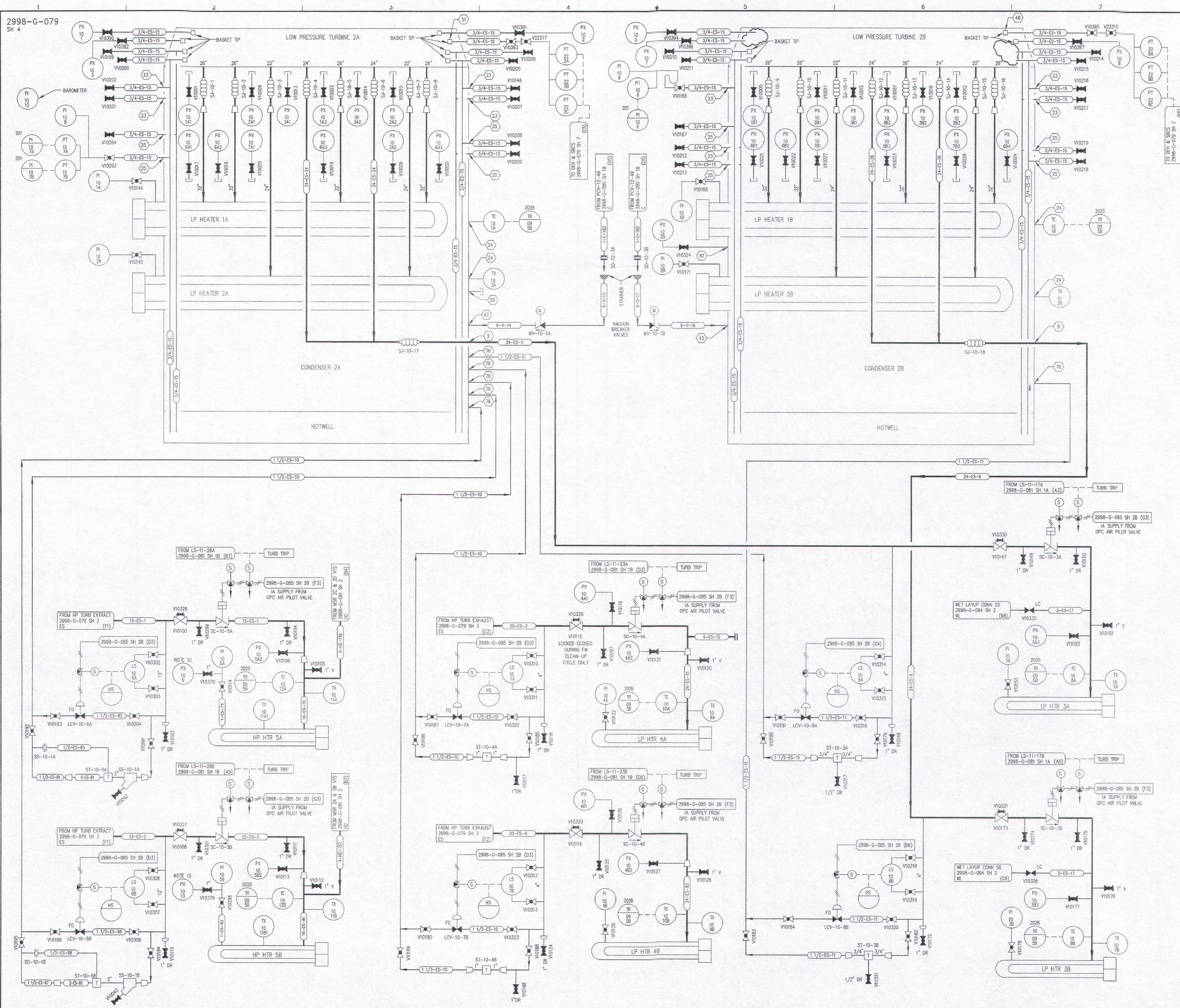


2998-G-079
SH 4



REVISIONS				
NO	DATE	DESCRIPTION	BY	APPROVED
19	7/24/95	DESCRIPTION	GM	JJZ
20	4/22/96	ADD (F1, H1) LINES, VALVES, STRAINERS, ORIFICES	GM	JJZ
21	11/13/02	ADD (C3 & C5) EXPANSION JOINTS	GM	MAM
22	7/23/08	INST. NUMBERS	GM	DG
23	6/9/09	ADD (F2 & H2) INSTRUMENTS & VALVES	GM	DC
24	7/31/09	ADD (A1-A2, A3-AS & A6-A7) PIPING, VALVES & INSTRUMENTS. REV. (A1) LOCATION OF INSTRUMENT.	GM	DC
25	5/4/10	ADD (E2, E5, E6, E7 & G7) CONTINUATIONS.	GM	DG
26	4/7/11	PIPING AND INSTRUMENTS.	GM	SHC
27	11/7/12	LINE NUMBERS.	GM	DG
28	11/9/12	PIPING, LINE NUMBERS AND COMPONENT LOCATIONS.	GM	DG
29	11/13/12	INSTRUMENTATION	PDB	DG
30	9/8/13	DELETE PS-10-9 & CONTINUATION.	GM	DC
31	1/15/15	TO INCORPORATE LATEST REVISION.	JG	SHC

NOTE
FOR NOTES & REFERENCE DWGS SEE 2998-G-079 SH 1

NOTE:
THIS DRAWING IS MADE FROM REV. 18
OF DRAWING 2998-G-079 SH 4

REVISION OF THIS DRAWING MAY REQUIRE UPDATE OF THE FOLLOWING DOCUMENT: FSAR 10.1-1d

FLORIDA POWER & LIGHT COMPANY
ST LUCIE PLANT
1983 - 890 MW EXTENSION - UNIT 2
FLOW DIAGRAM
EXTRACTION STEAM
SYSTEM

RAYTHEON ENGINEERS & CONSTRUCTORS, INC.

SCALE: NONE	APPROVAL	DATE:
DR: MECH		2998-G-079
DR: B. BLUM		SHEET
CH: W. PELPHELY		4

2998-G-079 SH 4, R31.DWG
D14