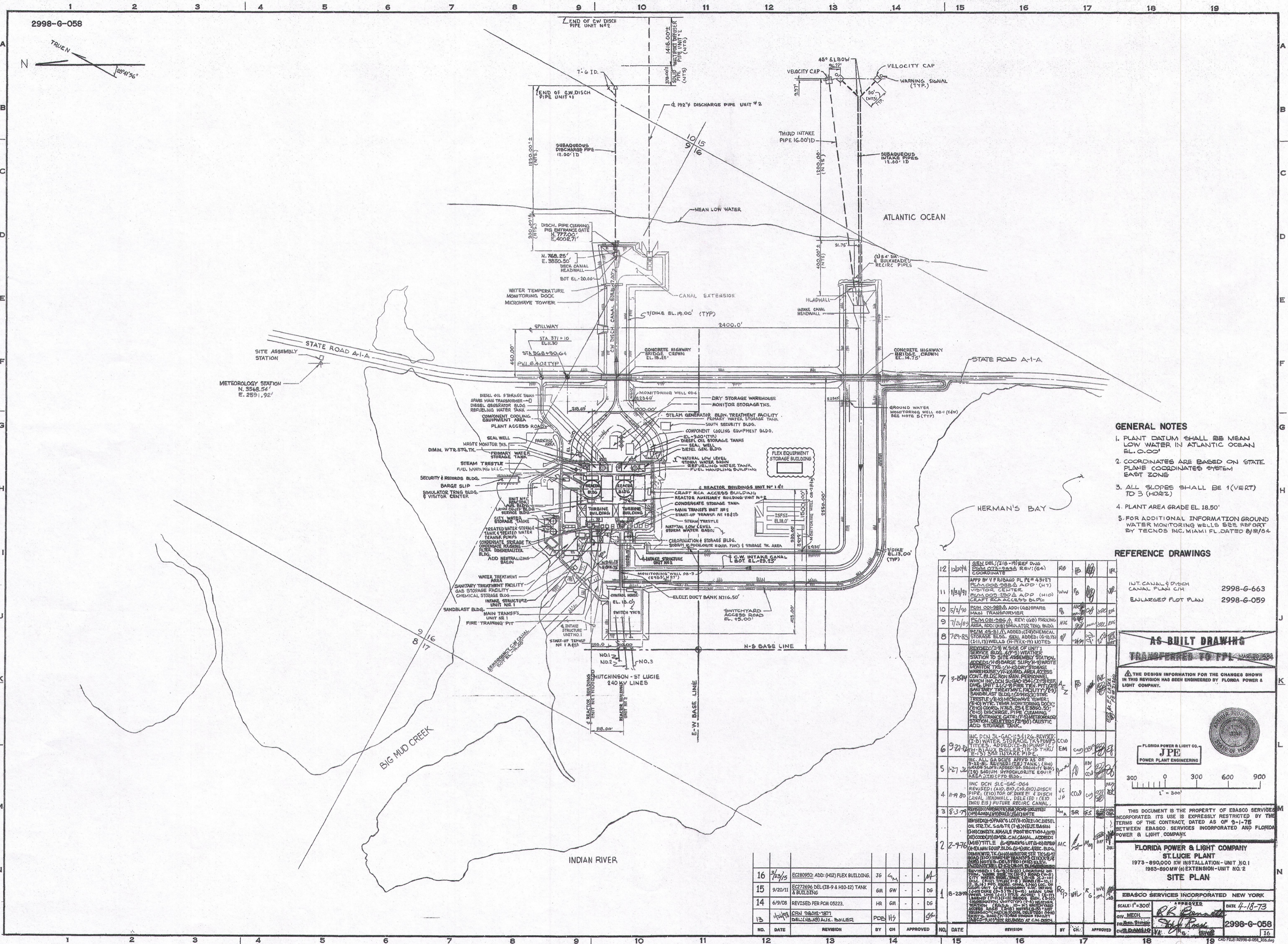
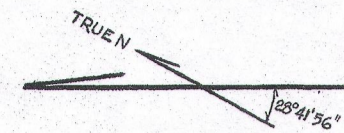


2998-G-058



- GENERAL NOTES**
1. PLANT DATUM SHALL BE MEAN LOW WATER IN ATLANTIC OCEAN EL. 0.00'
  2. COORDINATES ARE BASED ON STATE PLANE COORDINATES SYSTEM EAST ZONE
  3. ALL SLOPES SHALL BE 1 (VERT) TO 3 (HORIZ)
  4. PLANT AREA GRADE EL. 18.50'
  5. FOR ADDITIONAL INFORMATION GROUND WATER MONITORING WELLS SEE REPORT BY TECNOS INC. MIAMI FL. DATED 8/31/64

- REFERENCE DRAWINGS**
- |          |                                  |    |    |    |
|----------|----------------------------------|----|----|----|
| 10/20/64 | GEN DEL (110-19) REF DWS         | RD | FP | HL |
| 11/14/61 | APP BY V F RUBANO FL PE# 43121   | WW | PB | HL |
| 10/2/59  | PC/M 008-288A ADD (47)           | FB | HL | HL |
| 7/24/57  | PC/M 008-288A REV (66) PARKING   | HL | HL | HL |
| 7/27/58  | PC/M 28-81 (1) ADD (17) CHEMICAL | HL | HL | HL |

**AS-BUILT DRAWING**  
 TRANSFERRED TO FPL MAR 20 1964

THE DESIGN INFORMATION FOR THE CHANGES SHOWN IN THIS REVISION HAS BEEN ENGINEERED BY FLORIDA POWER & LIGHT COMPANY.

FLORIDA POWER & LIGHT CO.  
**JPE**  
 POWER PLANT ENGINEERING

300 0 300 600 900  
 1" = 300'

THIS DOCUMENT IS THE PROPERTY OF EBASCO SERVICES INCORPORATED. ITS USE IS EXPRESSLY RESTRICTED BY THE TERMS OF THE CONTRACT, DATED AS OF 9-1-78 BETWEEN EBASCO SERVICES INCORPORATED AND FLORIDA POWER & LIGHT COMPANY.

**FLORIDA POWER & LIGHT COMPANY**  
 ST. LUCIE PLANT  
 1973-890000 KW INSTALLATION-UNIT NO.1  
 1983-890000 KW (G) EXTENSION-UNIT NO.2  
**SITE PLAN**

EBASCO SERVICES INCORPORATED NEW YORK  
 SCALE: 1" = 300'  
 DATE 4-18-73  
 BY MECH. *R.R. Bennett*  
 BY CIVIL *W.L. Smith*  
 2998-G-058  
 16

NO.	DATE	REVISION	BY	CHK	APPROVED	NO.	DATE	REVISION	BY	CHK	APPROVED
16	7/13/75	EC220950; ADD: (H12) FLEX BUILDING	JG	GM							
15	9/20/71	EC272696 DEL (18-9 & H10-22) TANK & BUILDING	GM	GW							
14	6/9/68	REVISED PER PCN 05223	HR	GM							
13	1/19/68	PCN 98012-1871 DEL (18-9) ALX. BOILER	PDE	HJ							

*DAI*