

COLORADO OFFICE
10758 W. CENTENNIAL RD., STE. 200
LITTLETON, CO 80127
TEL: (866) 981-4588
FAX: (720) 981-5643



WYOMING OFFICE
5880 ENTERPRISE DR., STE. 200
CASPER, WY 82609
TEL: (307) 265-2373
FAX: (307) 265-2801

LOST CREEK ISR, LLC

February 4, 2016

UIC Program Supervisor
WDEQ – Water Quality Division
Herschler Building – 4W
122 W. 25th Street
Cheyenne, WY 82002

RE: Annual Report for 2015
UIC Class I Permit 13-409
Lost Creek ISR Project, Sweetwater County, WY

Dear Program Supervisor,

The Annual Summary Report for 2015 was inadvertently omitted from the Quarterly Report for the 4th quarter of 2015 submitted on January 30, 2016. The information required by Section K(7) of the Permit is provided herein. The Annual Report covers the calendar year of 2015 and is to include the following information:

- i. Graphical representation of injection pressures and volumes for the previous five (5) year's operation and a digital file containing the data.*
- ii. Graphical representation of quality of injected waste over time for the previous five (5) year's operation and a digital file containing the data.*

Graphs of injection pressures, volumes, and water quality have been attached as **Appendix A and B** and electronic data in Excel format is included via the enclosed **data disc**.

If you have any questions regarding this submittal, please contact me at the Casper Office.

Regards,

Michael Gaither
Manager EHS and Regulatory Affairs
Ur-Energy USA, Inc.

Lost Creek ISR, LLC is a wholly-owned subsidiary of Ur-Energy Inc.

TSX: URE
www.ur-energy.com

Attachments: Appendix A: 5-Year Summary of Injection Pressures and Volumes
Appendix B: 5-Year Summary of Water Quality Data
Data Summary Compact Disc

Cc: Theresa Horne, Ur-Energy, Littleton Office (via e-mail)
Brian Wood, WDEQ-LQD, Lander (via e-mail)
John Saxton, NRC Project Manager (via e-mail)

Lost Creek ISR, LLC is a wholly-owned subsidiary of Ur-Energy Inc.

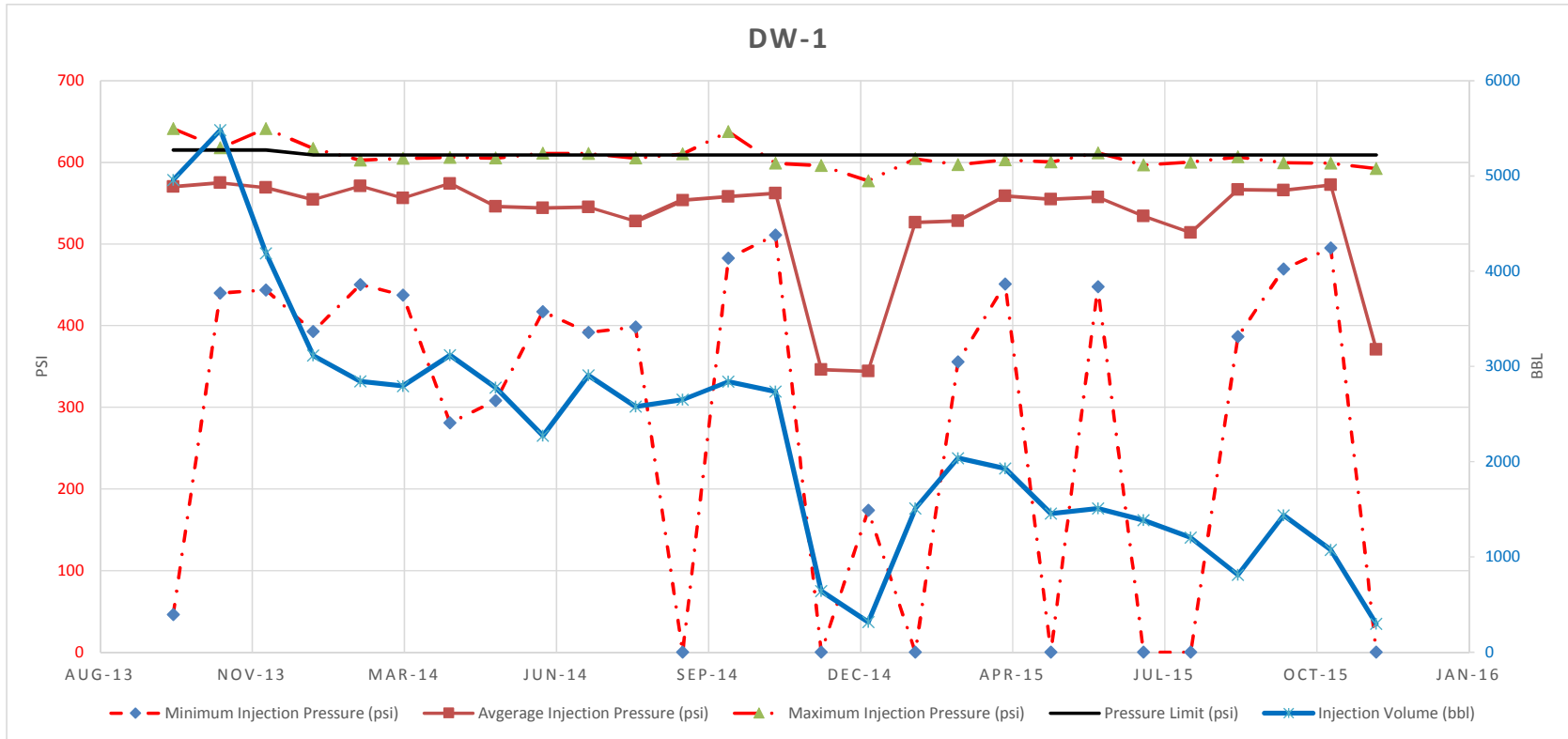
TSX: URE

www.ur-energy.com

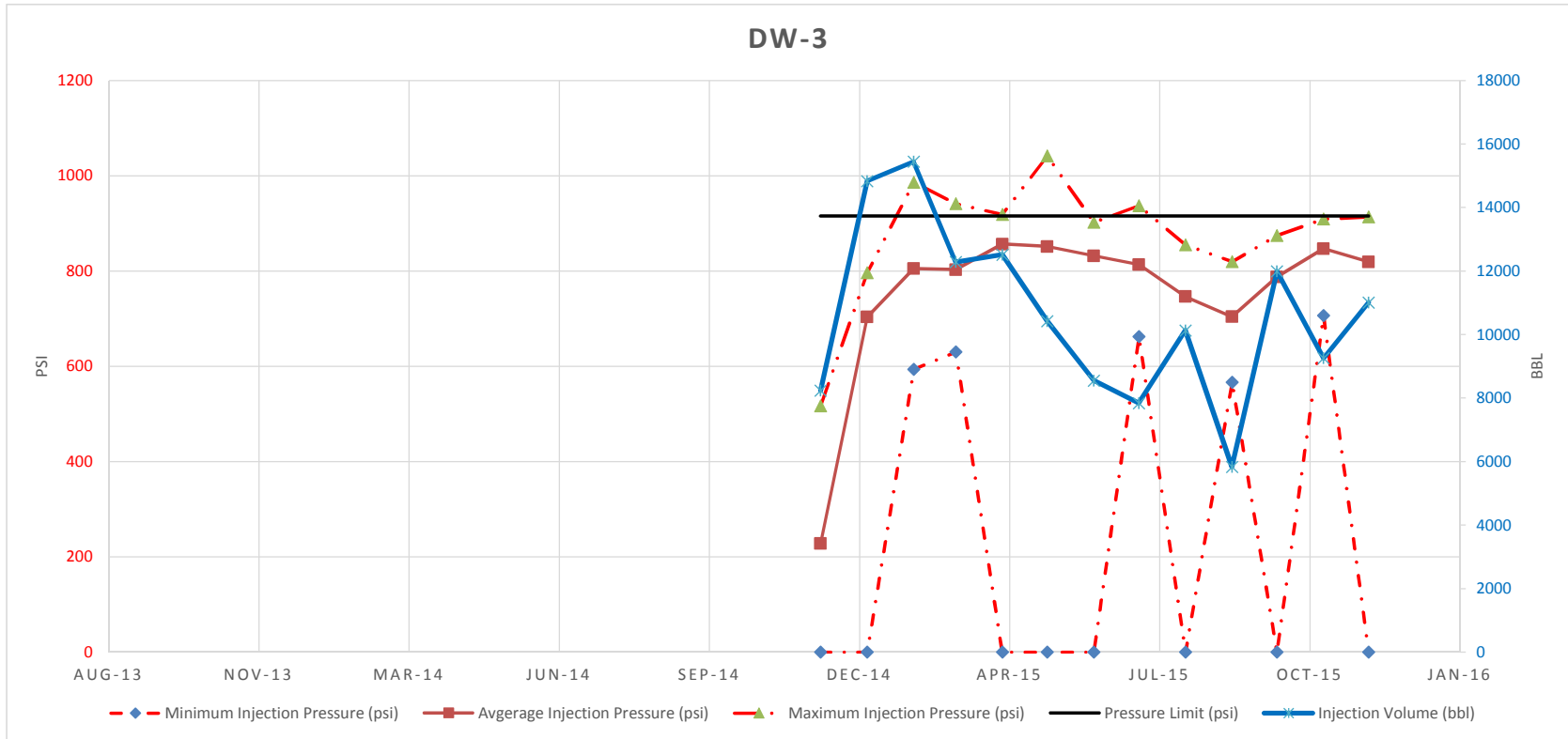
**APPENDIX A: 5-Year Summary of Monthly
Injection Pressures and Volumes
2015 Annual Report
Lost Creek ISR Project 13-409**

Date	DW-1					DW-3					DW-4				
	Minimum Injection Pressure (psi)	Average Injection Pressure (psi)	Maximum Injection Pressure (psi)	Pressure Limit (psi)	Injection Volume (bbl)	Minimum Injection Pressure (psi)	Average Injection Pressure (psi)	Maximum Injection Pressure (psi)	Pressure Limit (psi)	Injection Volume (bbl)	Minimum Injection Pressure (psi)	Average Injection Pressure (psi)	Maximum Injection Pressure (psi)	Pressure Limit (psi)	Injection Volume (bbl)
Oct-13	46	570	641	615	4958										
Nov-13	440	575	618	615	5480										
Dec-13	443	569	641	615	4187						0	266	473	838	6471
Jan-14	393	554	617	609	3115						170	631	886	838	25430
Feb-14	450	571	602	609	2844						509	747	827	838	17769
Mar-14	437	556	605	609	2794						593	772	815	838	18937
Apr-14	281	574	606	609	3118						542	768	848	838	16846
May-14	308	546	605	609	2777						0	723	833	838	13994
Jun-14	417	544	611	609	2274						0	755	898	838	13163
Jul-14	392	545	611	609	2907						656	769	837	838	13333
Aug-14	398	528	605	609	2579						632	764	826	838	12700
Sep-14	0	554	610	609	2651						651	783	861	838	12977
Oct-14	483	558	637	609	2839						0	783	850	838	12416
Nov-14	511	562	599	609	2737						697	789	842	838	2369
Dec-14	0	346	596	609	643	0	228	517	915	8239	0	742	850	838	4760
Jan-15	174	344	577	609	317	0	704	796	915	14836	0	730	816	838	4020
Feb-15	0	526	604	609	1509	594	805	986	915	15442	0	777	830	838	8565
Mar-15	356	528	597	609	2037	630	803	942	915	12283	0	734	809	838	7117
Apr-15	451	559	603	609	1928	0	856	919	915	12514	0	667	761	838	5429
May-15	0	555	600	609	1457	0	852	1042	915	10422	614	760	819	838	12190
Jun-15	448	557	612	609	1509	0	832	903	915	8551	8	772	831	838	10164
Jul-15	0	534	597	609	1386	662	814	937	915	7843	0	710	814	838	7073
Aug-15	0	514	600	609	1203	0	747	855	915	10130	578	740	819	838	7090
Sep-15	387	567	606	609	811	567	704	820	915	5833	0	779	833	838	12210
Oct-15	469	566	599	609	1437	0	788	875	915	11992	148	765	854	838	10293
Nov-15	495	572	599	609	1073	707	847	910	915	9257	0	758	838	838	10993
Dec-15	0	371	592	609	297	0	819	914	915	11011	0	778	827	838	10855

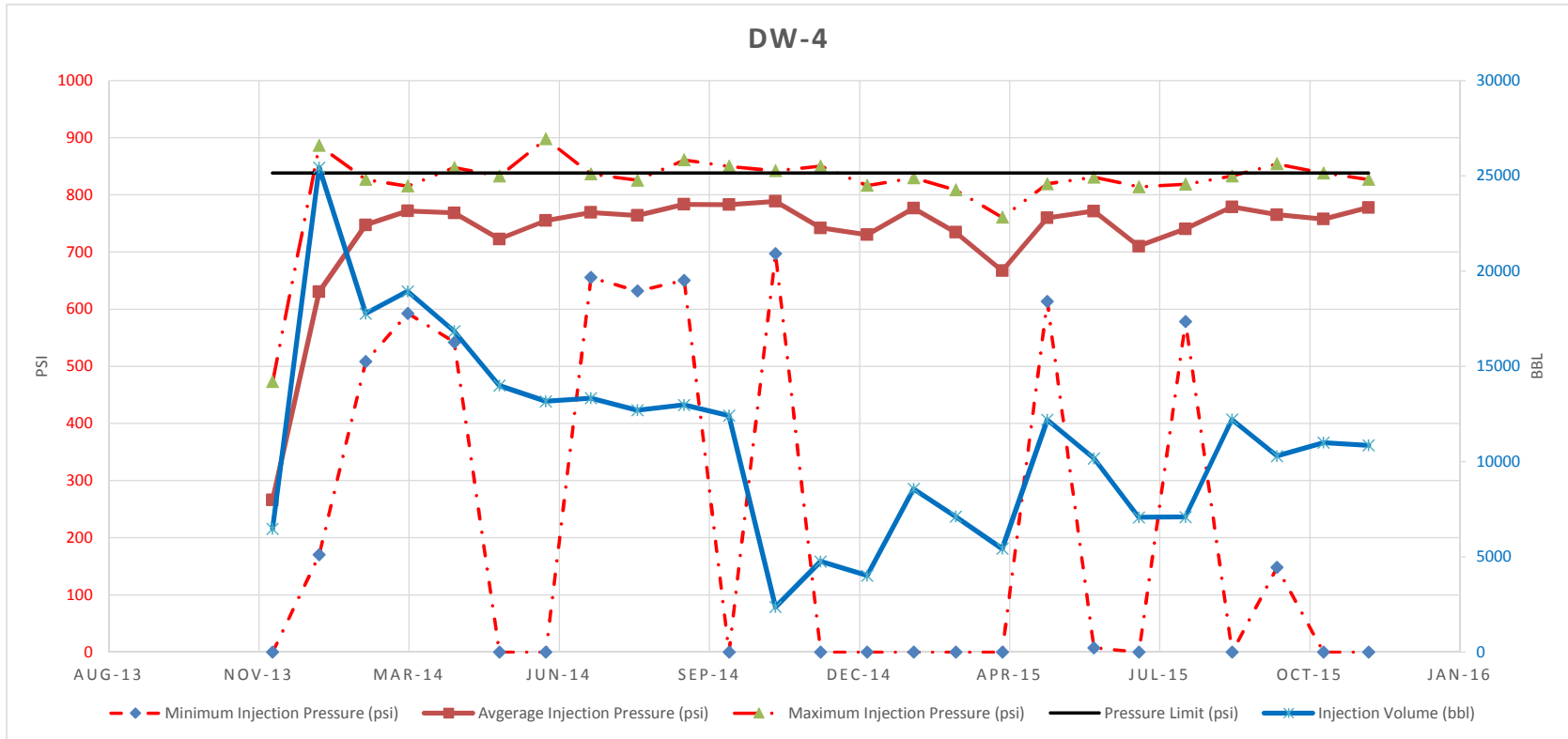
**APPENDIX A: 5-Year Summary of Monthly
Injection Pressures and Volumes
2015 Annual Report
Lost Creek ISR Project 13-409**



**APPENDIX A: 5-Year Summary of Monthly
Injection Pressures and Volumes
2015 Annual Report
Lost Creek ISR Project 13-409**



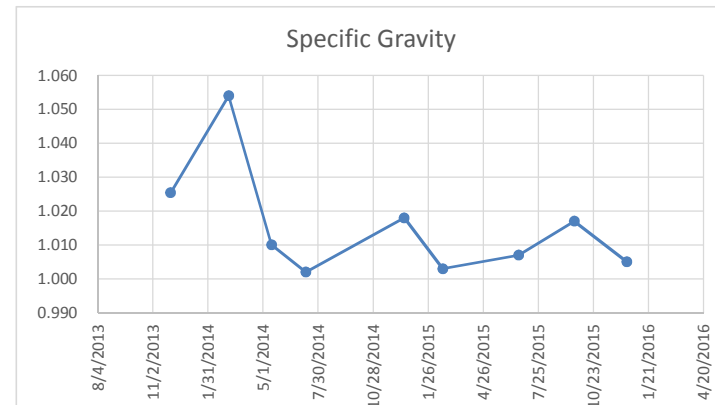
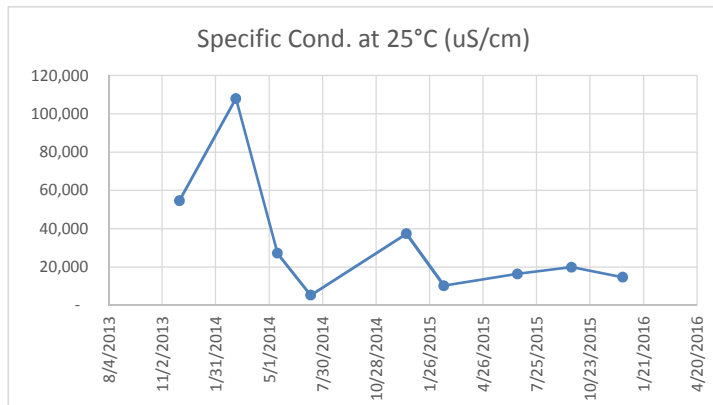
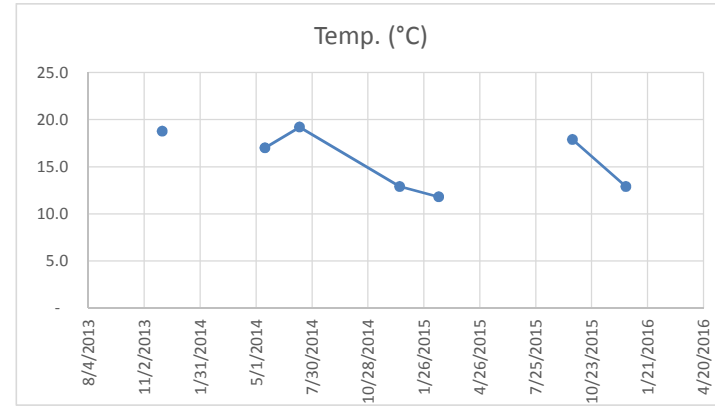
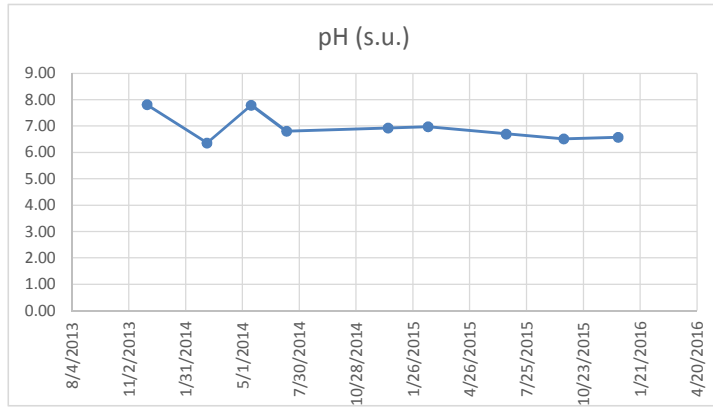
**APPENDIX A: 5-Year Summary of Monthly
Injection Pressures and Volumes
2015 Annual Report
Lost Creek ISR Project 13-409**



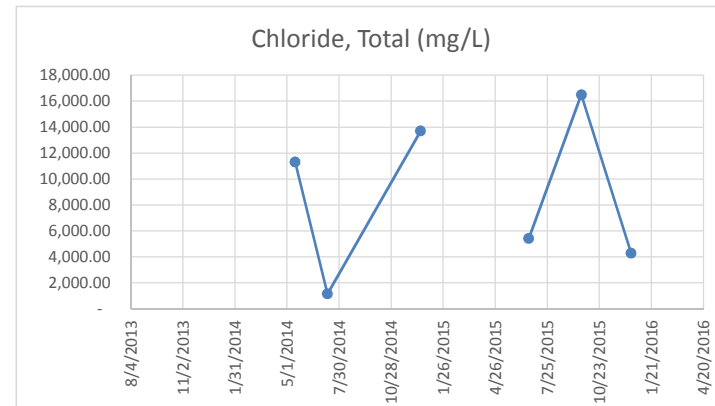
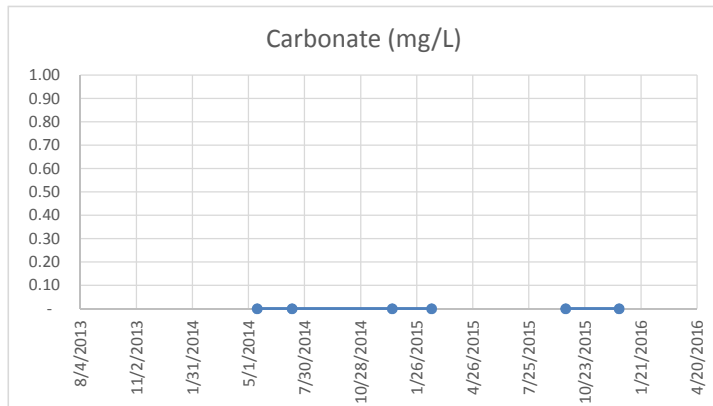
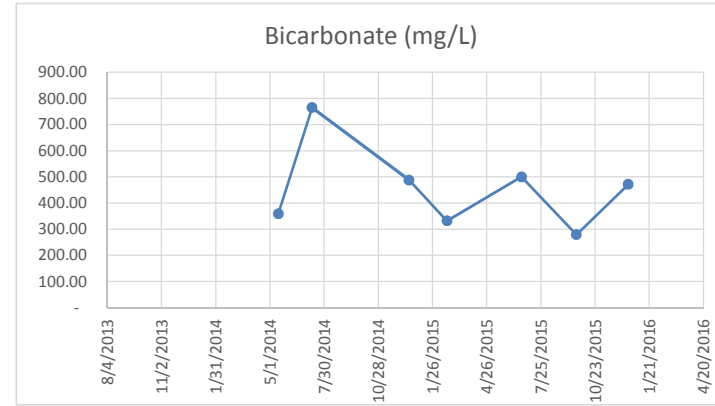
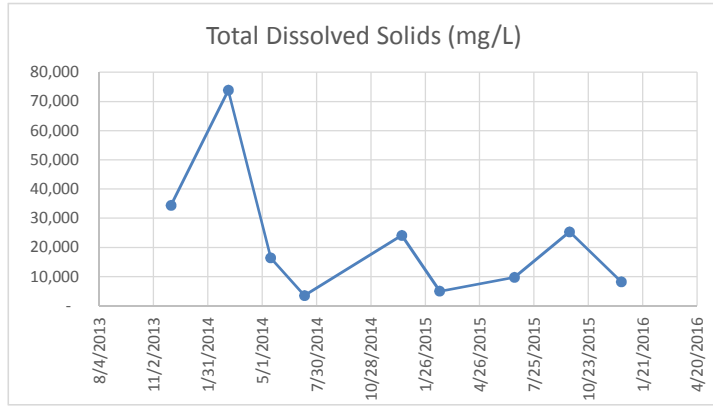
**APPENDIX B: 5-Year Summary of
Water Quality Data
2015 Annual Report
Lost Creek ISR Project 13-409**

Sample Name	Date	pH (s.u.)	Specific Cond. at 25°C (uS/cm)	Temp. (°C)	Specific Gravity	Total Dissolved Solids (mg/L)	Bicarbonate (mg/L)	Carbonate (mg/L)	Chloride, Total (mg/L)	Sulfate, Total (mg/L)	Hydrogen Sulfide (mg/L)	Arsenic, Total (mg/L)	Selenium, Total (mg/L)	Vanadium, Total (mg/L)	Uranium, Total (mg/L)	Radium-226, Total (pCi/L)
DW-Injectate	12/1/2013	7.81	54,632	18.8	1.025	34,411									266	108
DW-Injectate	3/6/2014	6.36	108,000		1.054	73,800									69	480
DW-Injectate	5/15/2014	7.79	27,200	17.0	1.010	16,400	359	ND(5)	11,300	496	0.01	0.028	0.287	ND(0.02)	134	12
DW-Injectate	7/10/2014	6.80	5,310	19.2	1.002	3,520	765	ND(5)	1,150	519	ND(1)	0.002	0.108	ND(0.01)	23	2,020
DW-Injectate	12/18/2014	6.92	37,400	12.9	1.018	24,100	488	ND(5)	13,700	917	ND(1)	0.013	0.240	ND(0.02)	87	1,980
DW-Injectate	2/19/2015	6.97	10,270	11.8	1.003	4,950	332	ND(5)		356	ND(1)	0.028	0.128	ND(0.01)	10	1,040
DW-Injectate	6/23/2015	6.70	16,400		1.007	9,770	500		5,410	786	ND(1)	0.007	0.211	ND(0.01)	23	1,740
DW-Injectate	9/22/2015	6.51	19,900	17.9	1.017	25,300	279	ND(5)	16,500	586	ND(1)	ND(0.01)	0.180	ND(0.09)	11	3,320
DW-Injectate	12/17/2015	6.57	14,650	12.9	1.005	8,180	471	ND(5)	4,280	609	ND(1)	0.008	0.157	0.03	5	722

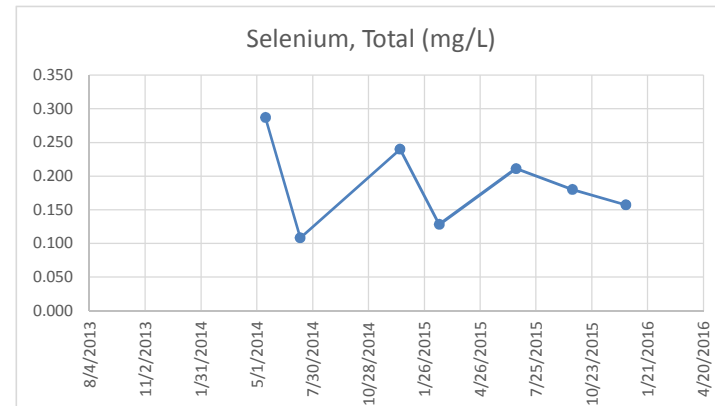
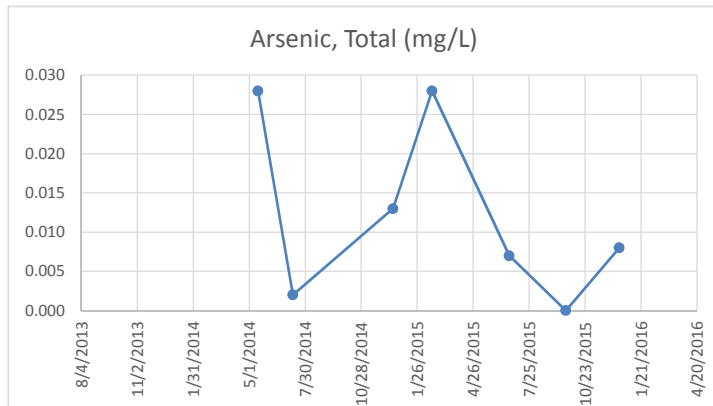
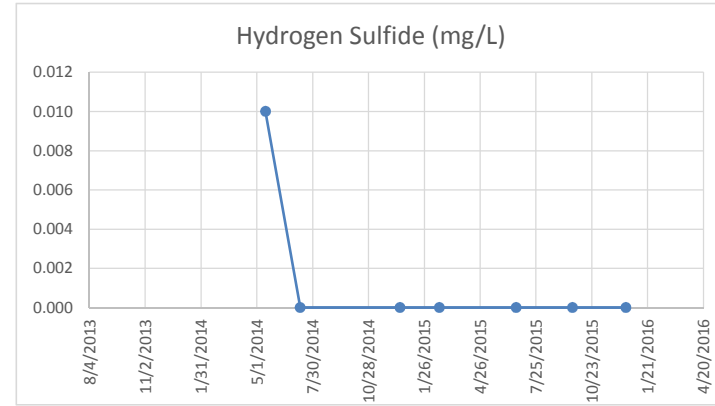
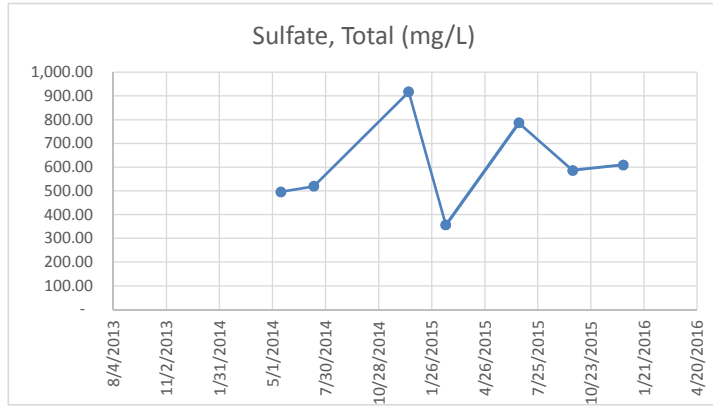
**APPENDIX B: 5-Year Summary of
Water Quality Data
2015 Annual Report
Lost Creek ISR Project 13-409**



**APPENDIX B: 5-Year Summary of
Water Quality Data
2015 Annual Report
Lost Creek ISR Project 13-409**



**APPENDIX B: 5-Year Summary of
Water Quality Data
2015 Annual Report
Lost Creek ISR Project 13-409**



**APPENDIX B: 5-Year Summary of
Water Quality Data
2015 Annual Report
Lost Creek ISR Project 13-409**

