

Wyoming Oil & Gas Conservation Commission
Office of State Oil and Gas Supervisor
 P. O. Box 2640
 Casper Wyoming 82602

12. County: CONVERSE
 9. API Number: 009-28403

APPLICATION FOR PERMIT TO: (Submit 1 copy on Fed., 2 on Fee & 3 copies on State Lands)

DRILL RE-ENTER/ DEEPEN RENEW OR EXTEND

1. CBM Well Injection Monitor
 Oil Well Single Zone Directional
 Gas Well Strat. Test Multiple Zone Horizontal
 Disposal Other: _____ Natural Drift

These in gray require a separate admin. or Comm. approval.

5. Split Estate: If Split Estate, provide the Form 1A.
 Yes No

 Answer Yes, if Surface owner, on disturbed lands, differs at all from Mineral owner.

INFORMATION ON THIS PAGE WILL BE RELEASED TO THE PUBLIC.

2. Operator: CHESAPEAKE OPERATING INC

3. Address: 6100 N. WESTERN OKC, OK 73118

Contact Person: LINDSEY MELOTT
 3b. Phone Number: 405-935-8323
 Email: LINDSEY.MELOTT@CHK.COM

16. Mineral Ownership: Fee State Fed
 Mineral Lease #: WYW 154122

17. Surface Ownership: Fee State Fed

Yes No 6. **Well Spacing:**
 Does this well conform to Chapter 3, Sec.2?
 Is this well an exception location?
 If yes, attach the approval letter.
 Is this well in a spaced or exempted area?
 If yes, Docket No. or Rule FEDERAL UNIT

4. Location. (quarter-quarter and footages):

Surface (SHL): NW NE 508' FNL & 2250' FEL
 11. Section, Township & Range, Lot, TR (SHL): L/ TR S 24 T 34N , R 74W

Bottom (BHL): SW NE 1827' FNL & 2250' FEL
 11a. Section, Township & Range, Lot, TR (BHL): S 25 T 34N , R 74W

Latitude (SHL, NAD 83): 42.90891 Longitude (SHL, NAD 83): 105.68115
 Latitude (BHL, NAD 83): 42.89081 Longitude (BHL, NAD 83): 105.68116

7. Unit Name - Unit Number: (for committed lands only)
 SOUTH HYLTON RANCH UNIT
 14. DISTANCE from this well BHL to the nearest unit boundary or uncommitted lands: N/A

15. DISTANCE from this well BHL to the nearest drilling, completed or applied-for well in the same reservoir: N/A

10. Reservoir(s): NIOBRARA

13. Field Name: WILDCAT

18. DISTANCE: Is this location less than 350 feet from water supplies, residences, schools, parks, hospitals, churches, businesses or other places where people are known to congregate? No Yes

8. Well Number and Name: SOUTH HYLTON RANCH UNIT 34-74 24-1H

19. Proposed depth: 19,231' MD- 12,056' TVD
 21. Ungraded Elevation: 5369.2'
 21a. Graded Elevation: 5367'

22. PROPOSED SURFACE & PRODUCTION CASING & CEMENTING PROGRAM

SIZE OF HOLE	SIZE OF CASING	Lb/ Foot	API Grade	NEW OR USED	CENTRALIZERS	DEPTH (MD)	Sx of CEMENT (API)	CLASS
17-1/2"	13-3/8"	54.5	J-55	NEW	11	0-1,700'	1348	
12-1/4"	9-5/8"	43.5	P-110	NEW	29	0-11,158'	1068	
7-7/8"	5-1/2"	23	P-110	NEW	6	0-19,006'	1117	

23. DESCRIPTION OF PROPOSED OPERATIONS: If proposal is to directionally drill or deepen, give pertinent data on subsurface locations, measured and true vertical depth. If proposal is to deepen, give data on present productive zone and proposed new productive zone. Give drilling fluids program. (NOTE ANY PLANNED OPERATIONS PREVIOUSLY SUBMITTED.)

Chesapeake Operating Inc. plans to drill a horizontal well to test the Niobrara formation. If productive, casing will be run and well completed. If dry, well will be plugged per WOGCC regulations. Stimulation data will be sent at a later date on a sundry.
 AA 3-15-11
 Chesapeake requests confidentiality for the maximum time allowed.

RECEIVED
 WOGCC STATE OFFICE
 MAR - 8 2011
 WYOMING OIL & GAS
 CONSERVATION COMMISSION

CONFIDENTIAL
 (Unit Ex)

25. Signed: Lindsey Melott Title: Sr. Reg. Comp. Spec. Date: 3/4/11

Name Typed: Lindsey Melott Phone: 405-935-8323 20. Type of Bond & No.: Nationwide NM 2634

Operator: check boxes for included attachments.

Survey Plat Form 1B Directional Plan Offset Water Well Data
 Form 1A Drilling & BOP Plans Stimulation Completion Plan Offset Well Data

(The space below is for State Office use)

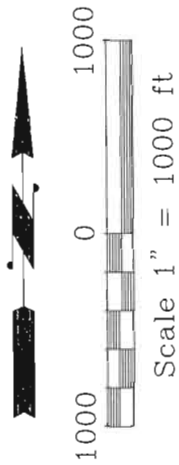
Approved By: **FEDERAL**
 State Oil and Gas Supervisor

Approval Date: March 16, 2011

Conditions of Approval (State Office Use Only):
 Notify the Supervisor at least twenty-four (24) hours before all SPU's and BOP tests by using the API number.
 No completion fluids in the Reserve Pit w/o approval.
 All stimulations must be approved before completing.

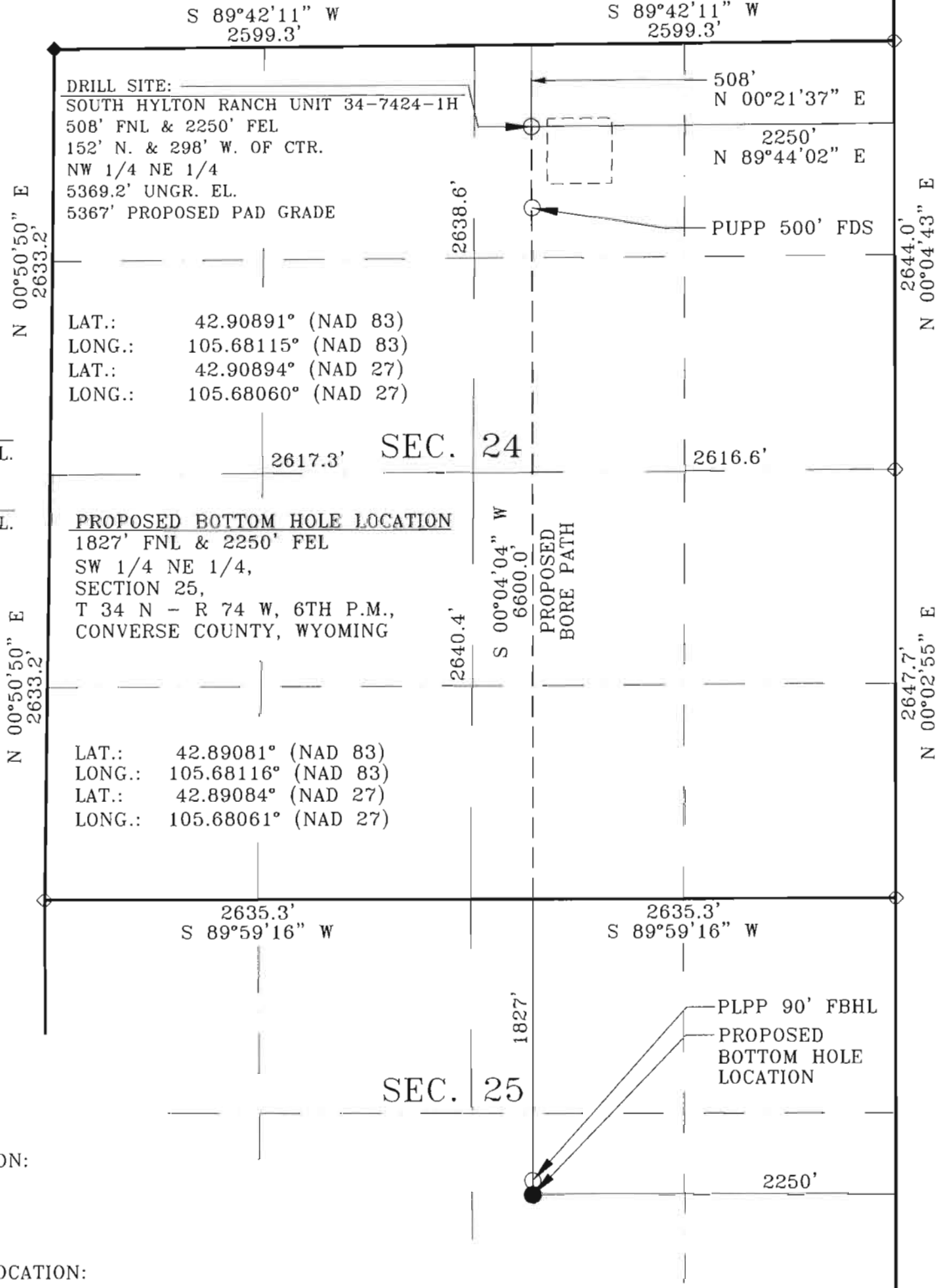
*See Instructions On Reverse Side

T 34 N - R 74 W



300' S. REF.
5360.0' UNGR. EL.

310' W. REF.
5348.5' UNGR. EL.



SURFACE LOCATION:
X: 362312.0
Y: 817444.8
NAD 27

BOTTOM HOLE LOCATION:
X: 362269.1
Y: 810846.9
NAD 27

PROPOSED BORE PATH
NAD 27 AZ 180.3719°
NAD 27 DISTANCE: 6598.0'
GROUND DISTANCE: 6600.0'

BASIS OF BEARING:
GPS GRID BEARINGS

BASIS OF ELEVATION:
NSRS CORS CORRECTED
LAT., LONG., HEIGHT,
GEOID 99

NOTE: THE UPPER PERFORATION POINT
WILL NOT START ANY CLOSER THAN
500' FROM DRILL SITE.

THE LOWER PERFORATION POINT IS BACK
90' FROM TOTAL DEPTH,

Land Surveying Incorporated by President Cevin C. Imus, a registered land surveyor in the state of Wyoming, hereby certifies that this plat was made from data collected during an actual survey performed by Peter Angelos on January 4, 2011 and that the SOUTH HYLTON RANCH UNIT 34-74 24-1H well site was staked and is accurately represented on this plat. The bottom hole location shown on this plat is provided by Chesapeake Operating, Inc. and all coordinates for that position are calculated, not surveyed.



Prepared For: CHESAPEAKE OPERATING, INC.
Location: SOUTH HYLTON RANCH UNIT 34-74 24-1H 508' FNL & 2250' FEL 152' NORTH & 298' WEST OF CENTER NW 1/4 NE 1/4 OF SECTION 24, T 34 N - R 74 W, 6TH P.M., CONVERSE COUNTY, WYOMING
Prepared By: LAND SURVEYING INCORPORATED 209 NORTH WORKS AVENUE GILLETTE, WY 82716
DATE: 01/11/2011 JOB #10-177A FILE: 10177AWP.DWG REVISION: MOVE BHL CALIBRATION: HIGHLAND LOOP
REF: DB1