

**Wyoming Oil & Gas Conservation Commission**  
**Office of State Oil and Gas Supervisor**  
**P. O. Box 2640**  
**Casper Wyoming 82602**

12. County: Converse 9. API Number: 49-009-28544 *(Re-New) gm*

5. Split Estate: Yes  No  If Split Estate, provide the Form 1A. Answer Yes, if Surface owner, on disturbed lands, differs at all from Mineral owner.

APPLICATION FOR PERMIT TO: (Submit 1 copy on Fed., 2 on Fee & 3 copies on State Lands)

DRILL  RE-ENTER/ DEEPEN  RENEW OR EXTEND

1. CBM Well  Injection  Monitor  Oil Well  Gas Well  Disposal  Strat. Test  Other: \_\_\_\_\_

Single Zone  Multiple Zone  Directional  Horizontal  Natural Drift

These in gray require a separate admin. or Comm. approval.

16. Mineral Ownership: Fee  State  Fed   
Mineral Lease #: WYW055426

17. Surface Ownership: Fee  State  Fed   
0

6. Well Spacing: Does this well conform to Chapter 3, Sec.2?    
Is this well an exception location?    
If yes, attach the approval letter.

INFORMATION ON THIS PAGE WILL BE RELEASED TO THE PUBLIC.

2. Operator: Wold Energy Partners, LLC  
3. Address: 1775 Sherman Street, Suite 1700 Denver, CO 80203

Is this well in a spaced or exempted area?   *559-15*  
If yes, Docket No. or Rule 516-2014

Contact Person: Sara Bohl 3b. Phone Number: 303-831-0575 Email: sbohl@woldoil.com

7. Unit Name - Unit Number: (for committed lands only)  
NA NA

4. Location, (quarter-quarter and footages):  
Surface (SHL): SWSW 252' FSL 300' FWL  
Bottom (BHL): NENW 500' FNL 1980' FWL

11. Section, Township & Range, Lot, TR (SHL):  
Lot 13 sec. 23, T. 38 N., R. 74 W.

11a. Section, Township & Range, Lot, TR (BHL):  
Lot 3 sec. 14, T. 38 N., R. 74 W.

14. DISTANCE from this well BHL to the nearest unit boundary or uncommitted lands: 500'

15. DISTANCE from this well BHL to the nearest drilling, completed or applied-for well in the same reservoir: NA

Latitude (SHL, NAD 83): 43.244542 Longitude (SHL, NAD 83): -105.718689  
Latitude (BHL, NAD 83): 43.271312 Longitude (BHL, NAD 83): -105.712376

10. Reservoir(s): Frontier

18. DISTANCE: Is this location less than 350 feet from water supplies, residences, schools, parks, hospitals, churches, businesses or other places where people are known to congregate? No  Yes

13. Field Name: Unnamed

19. Proposed depth: 22591 MD 12715 TVD 21. Ungraded Elevation: 5380.0 21a. Graded Elevation: 5380.0

8. Well Number and Name: Manning Fed 14-23-14-3874FH

SIZE OF HOLE	SIZE OF CASING	Lb/ Foot	API Grade	NEW OR USED	CENTRALIZERS	DEPTH (MD)	Sx of CEMENT (API)	CLASS
13 1/2"	9 5/8"	36	J55	NEW	Yes	3000	1420	LT & G
8 3/4"	7"	29	HCP-110	NEW	Yes	13043	770	LT & G
6-1/8"	4-1/2"	15.1	P-110	NEW	Yes	22591	0	0

*Change owner, SHL, Long, Lat & Depth*  
If proposals to deepen, give data on present productive zone and proposed new productive zone. Give drilling fluids program.  
(NOTE ANY PLANNED OPERATIONS PREVIOUSLY SUBMITTED.)  
*MAH: 8-2014*  
*3/1280 460' H/S 750' SW SB 1000' SW*  
*4/2 14 25 28 40 50*  
Operator plans to drill to drill a vertical hole to the planned KOP. Then may log the open hole back to the surface casing shoe, then drilling a horizontal Frontier well to 22590.47 ft. MD. Completion and stimulation plan will be submitted in a sundry. All operations will be approved by the WO&GCC prior to commencing any operations.  
*No 92240, 92259*  
Wold Energy Partners, LLC requests Confidential status on this permit.

WOGCC DATE STAMP  
**RECEIVED**  
DEC 15 2014  
WYOMING OIL & GAS CONSERVATION COMMISSION

25. Signed: Sara Bohl Title: Regulatory and Permitting Lead Date: 12/11/2014  
Name Typed: Sara Bohl Phone: 303-831-0575 20. Type of Bond & No.: Operator #2460

Operator: check boxes for included attachments.  
 Survey Plat  Form 1B  Directional Plan  Offset Water Well Data  
 Form 1A  Drilling & BOP Plans  Stimulation Completion Plan  Offset Well Data

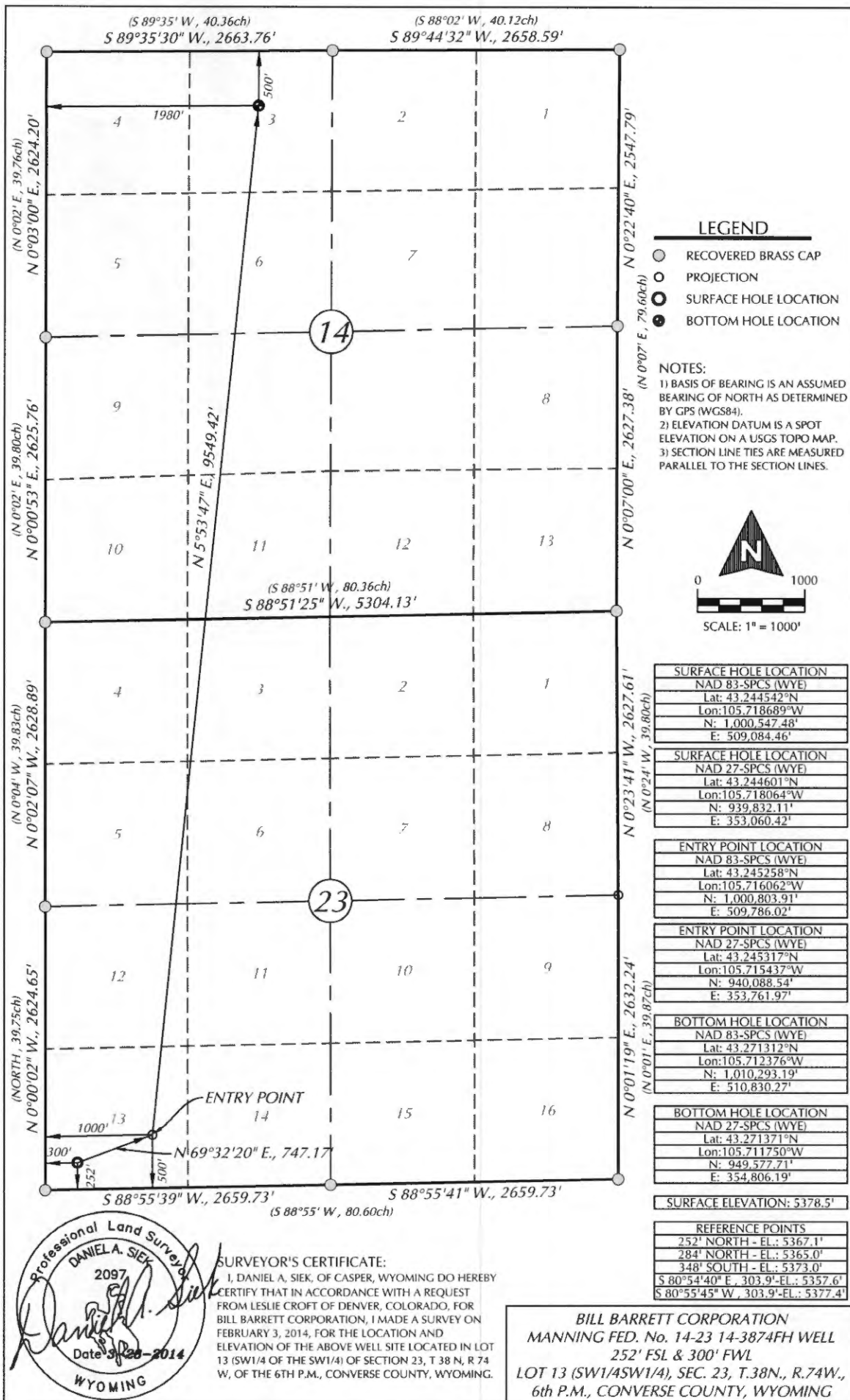
**Conditions of Approval (State Office Use Only):**  
**Notify the Supervisor at least twenty-four (24) hours before all SPUDs and BOP tests by using the API number.**  
**No completion fluids in the Reserve Pit w/o approval.**  
**All stimulations must be approved before completing.**

(The space below is for State Office use)  
Approved By: [Signature]  
State Oil and Gas Supervisor  
Approval Date: December 15, 2015

**BWQ OK**

Oil based drill cuttings must be tested prior to burial, and an approved contractor must be used for solidification. Water Based pits must be sampled for TPH and SAR prior to burial. Please contact WOGCC 24 hours prior to sampling.

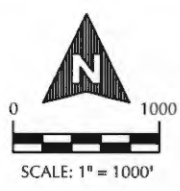
\*See Instructions On Revers



- LEGEND**
- RECOVERED BRASS CAP
  - PROJECTION
  - SURFACE HOLE LOCATION
  - BOTTOM HOLE LOCATION

**NOTES:**

- 1) BASIS OF BEARING IS AN ASSUMED BEARING OF NORTH AS DETERMINED BY GPS (WGS84).
- 2) ELEVATION DATUM IS A SPOT ELEVATION ON A USGS TOPO MAP.
- 3) SECTION LINE TIES ARE MEASURED PARALLEL TO THE SECTION LINES.



<b>SURFACE HOLE LOCATION</b> NAD 83-SPCS (WYE) Lat: 43.244542°N Lon: 105.718689°W N: 1,000,547.48' E: 509,084.46'
<b>SURFACE HOLE LOCATION</b> NAD 27-SPCS (WYE) Lat: 43.244601°N Lon: 105.718064°W N: 939,832.11' E: 353,060.42'
<b>ENTRY POINT LOCATION</b> NAD 83-SPCS (WYE) Lat: 43.245258°N Lon: 105.716062°W N: 1,000,803.91' E: 509,786.02'
<b>ENTRY POINT LOCATION</b> NAD 27-SPCS (WYE) Lat: 43.245317°N Lon: 105.715437°W N: 940,088.54' E: 353,761.97'
<b>BOTTOM HOLE LOCATION</b> NAD 83-SPCS (WYE) Lat: 43.271312°N Lon: 105.712376°W N: 1,010,293.19' E: 510,830.27'
<b>BOTTOM HOLE LOCATION</b> NAD 27-SPCS (WYE) Lat: 43.271371°N Lon: 105.711750°W N: 949,577.71' E: 354,806.19'
<b>SURFACE ELEVATION: 5378.5'</b>
<b>REFERENCE POINTS</b> 252' NORTH - EL.: 5367.1' 284' NORTH - EL.: 5365.0' 348' SOUTH - EL.: 5373.0' S 80°54'40" E, 303.9'-EL.: 5357.6' S 80°55'45" W, 303.9'-EL.: 5377.4'

**Professional Land Surveyor**  
**DANIEL A. SIEK**  
2097  
*Daniel A. Siek*  
Date: 3/28-2014  
WYOMING

**SURVEYOR'S CERTIFICATE:**  
I, DANIEL A. SIEK, OF CASPER, WYOMING DO HEREBY CERTIFY THAT IN ACCORDANCE WITH A REQUEST FROM LESLIE CROFT OF DENVER, COLORADO, FOR BILL BARRETT CORPORATION, I MADE A SURVEY ON FEBRUARY 3, 2014, FOR THE LOCATION AND ELEVATION OF THE ABOVE WELL SITE LOCATED IN LOT 13 (SW1/4 OF THE SW1/4) OF SECTION 23, T 38 N, R 74 W, OF THE 6TH P.M., CONVERSE COUNTY, WYOMING.

**BILL BARRETT CORPORATION**  
**MANNING FED. No. 14-23 14-3874FH WELL**  
**252' FSL & 300' FWL**  
**LOT 13 (SW1/4SW1/4), SEC. 23, T.38N., R.74W.,**  
**6th P.M., CONVERSE COUNTY, WYOMING**

<b>WELL LOCATION PLAT</b>	Date: 2/3/2014	Rev. Date: 3/28/2014	Drawn By: BIZ	Checked By: DAS
Prepared by Siek Surveying Service / Casper, WY / PH: (307)266-6829 / FAX: (307)472-4502		Job No.: 5-12-14		