


Figure 5.2-1. Locations of Specific Conductance Cross Sections.

 UNITED STATES NUCLEAR REGULATORY COMMISSION	
In the Matter of: FLORIDA POWER & LIGHT COMPANY (Turkey Point Nuclear Generating, Units 3 and 4)	
ASLBP #:	15-935-02-LA-BD01
Docket #:	05000250 & 05000251
Exhibit #:	FPL-023-00-BD01
Admitted:	1/4/2016
Rejected:	
Other:	
Identified:	1/4/2016
Withdrawn:	
Stricken:	



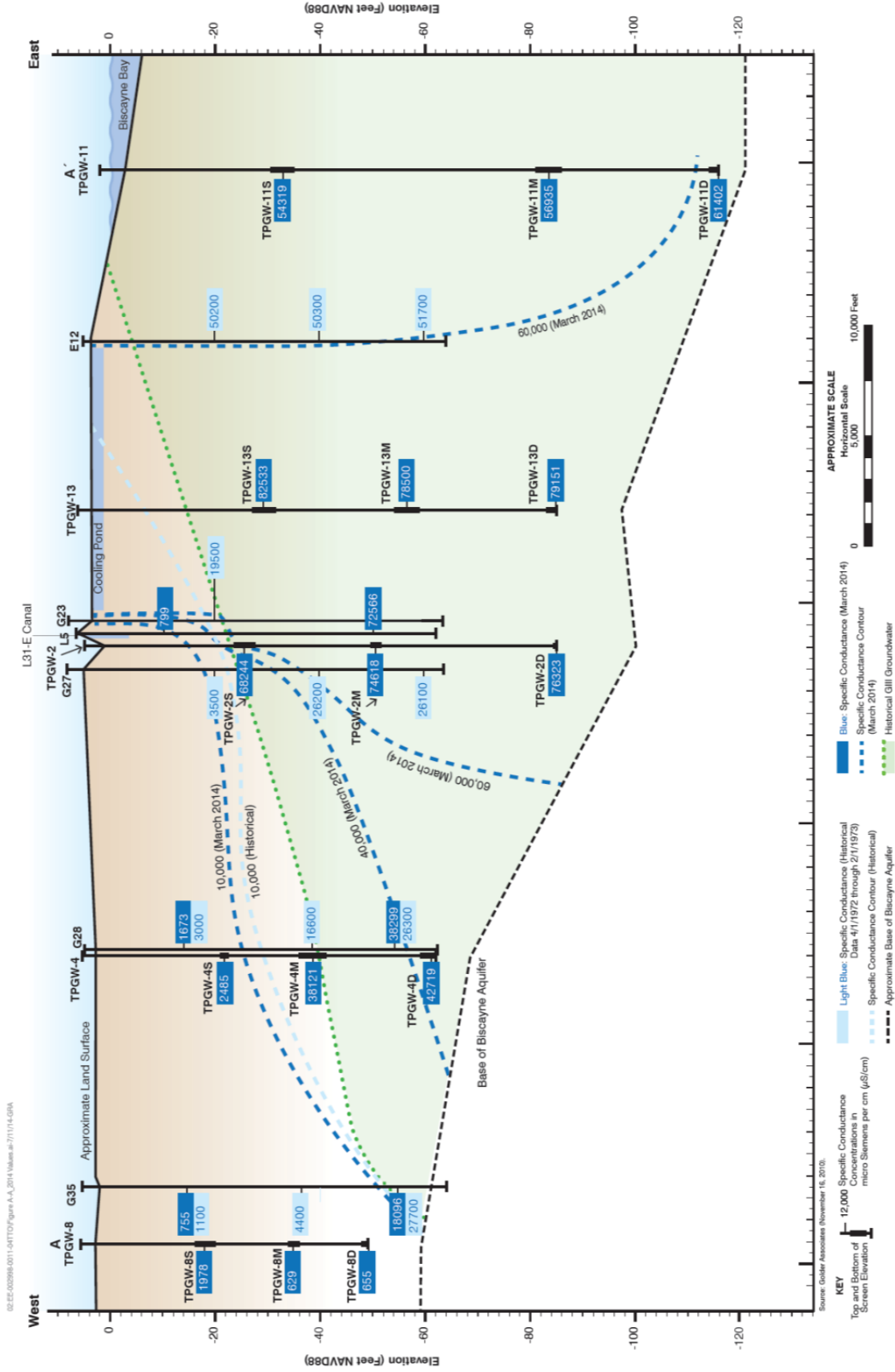


Figure 5.2-2. Specific Conductance Cross Section A-A', Historic and Current Concentration Isoleths.



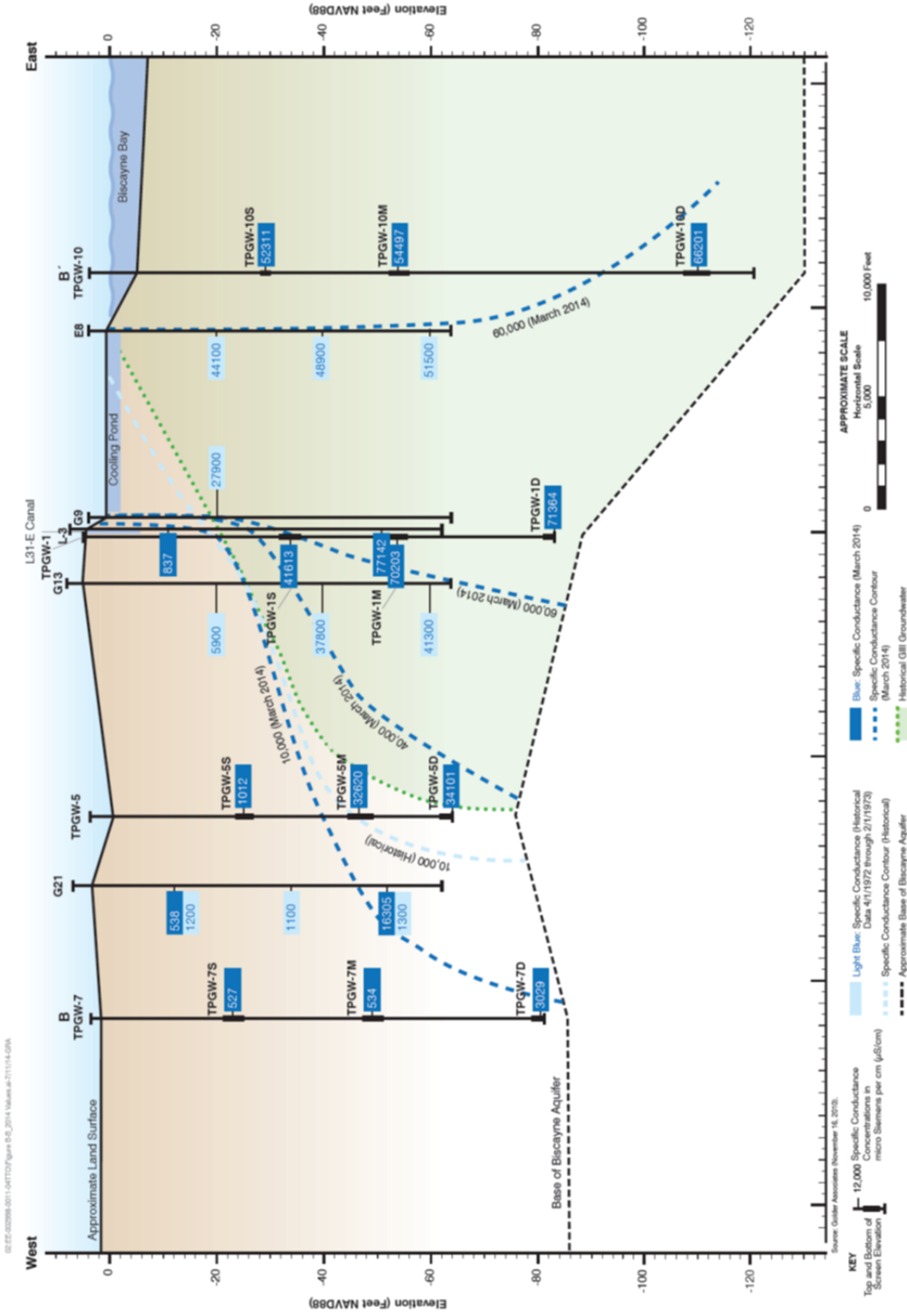


Figure 5.2-3. Specific Conductance Cross Section B-B', Historic and Current Concentration Isoleths.

**FPL Turkey Point Annual Post-Uprate Monitoring Report
for Units 3 & 4 Uprate Project – August 2014**

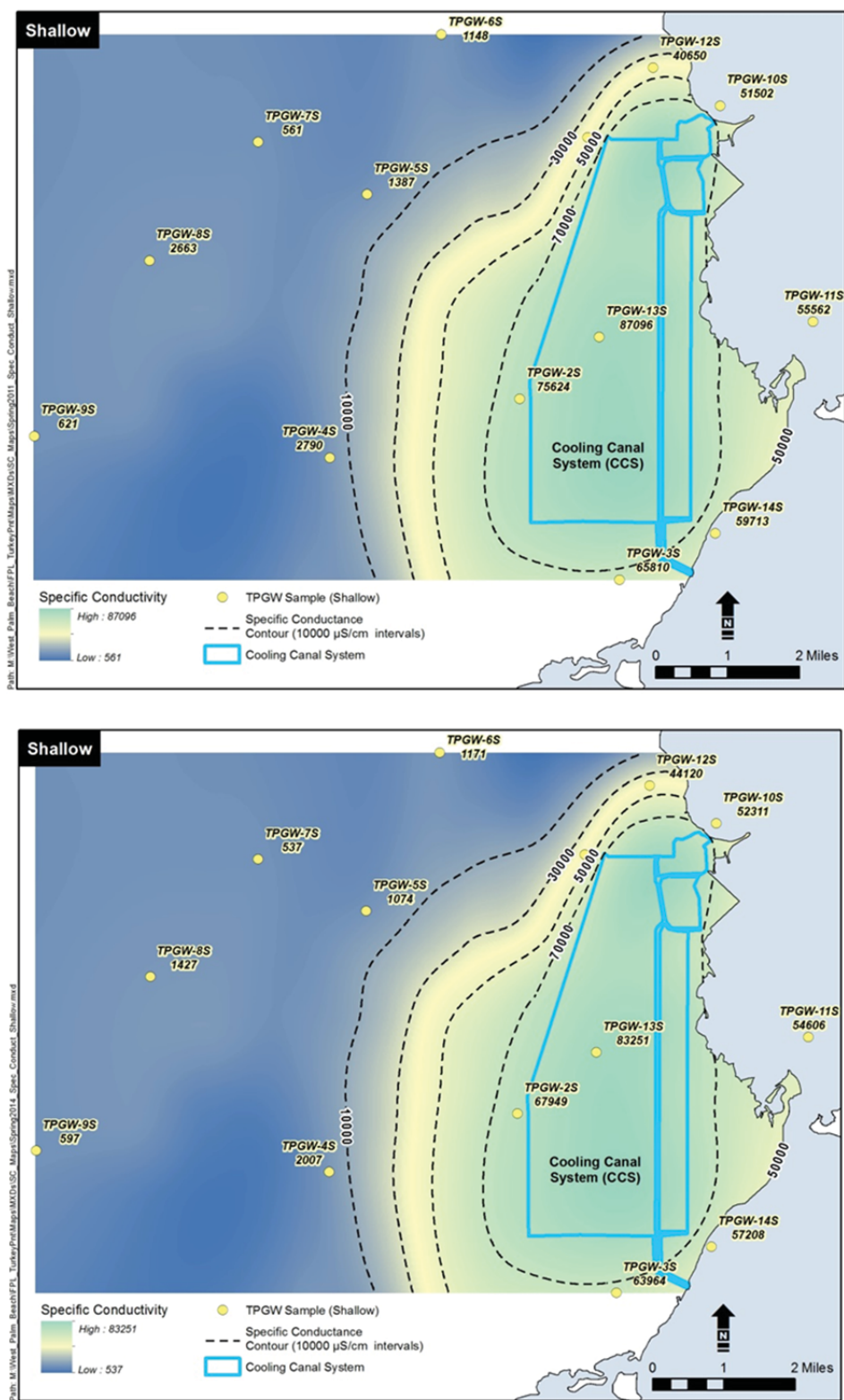


Figure 5.2-4. Shallow Well Pre-Uprate (Top) and Post-Uprate (Bottom) Average Specific Conductance Isopleths.

**FPL Turkey Point Annual Post-Uprate Monitoring Report
for Units 3 & 4 Uprate Project – August 2014**

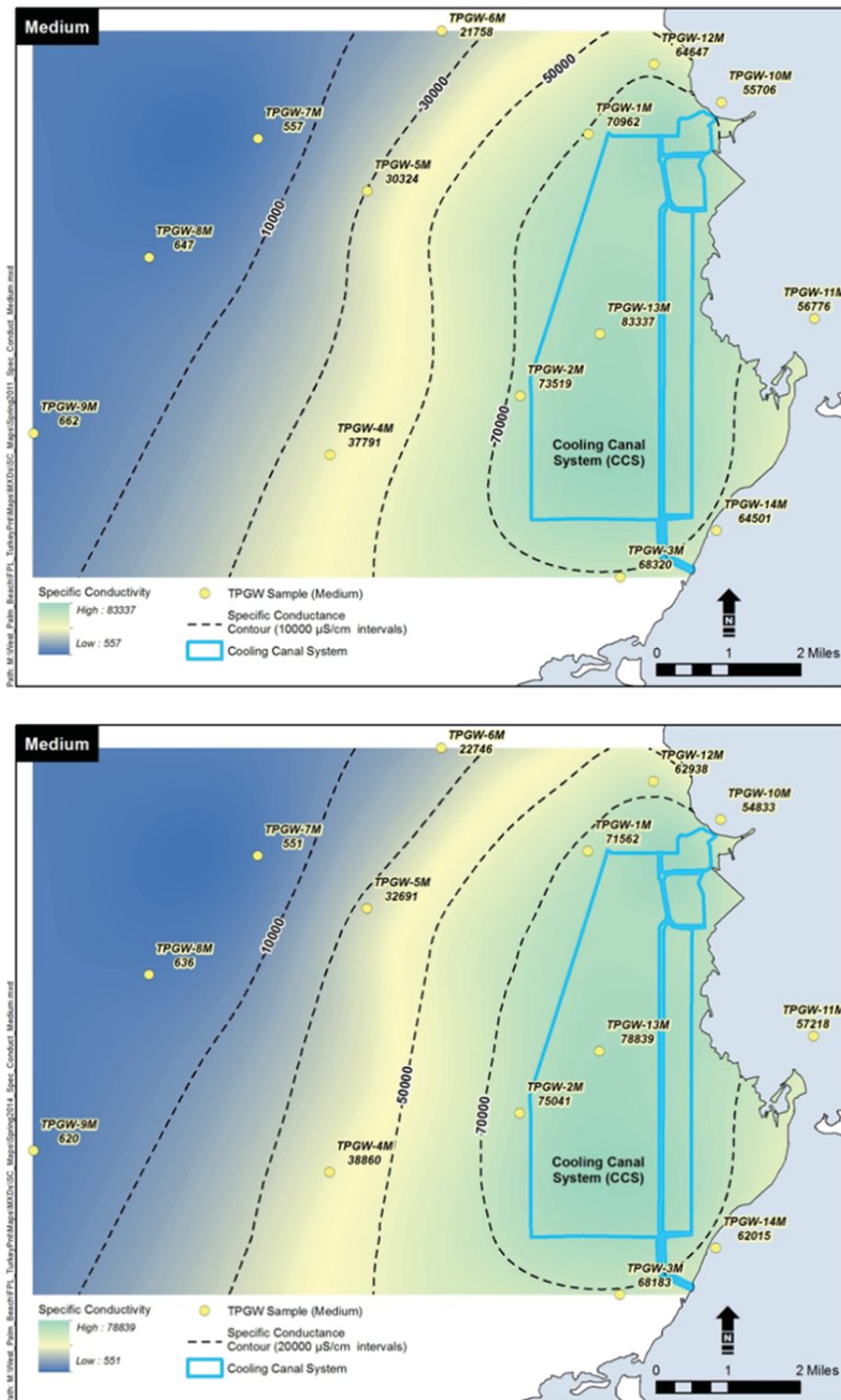


Figure 5.2-5. Medium Well Pre-Uprate (Top) and Post-Uprate (Bottom) Average Specific Conductance Isoleths.

**FPL Turkey Point Annual Post-Uprate Monitoring Report
for Units 3 & 4 Uprate Project – August 2014**

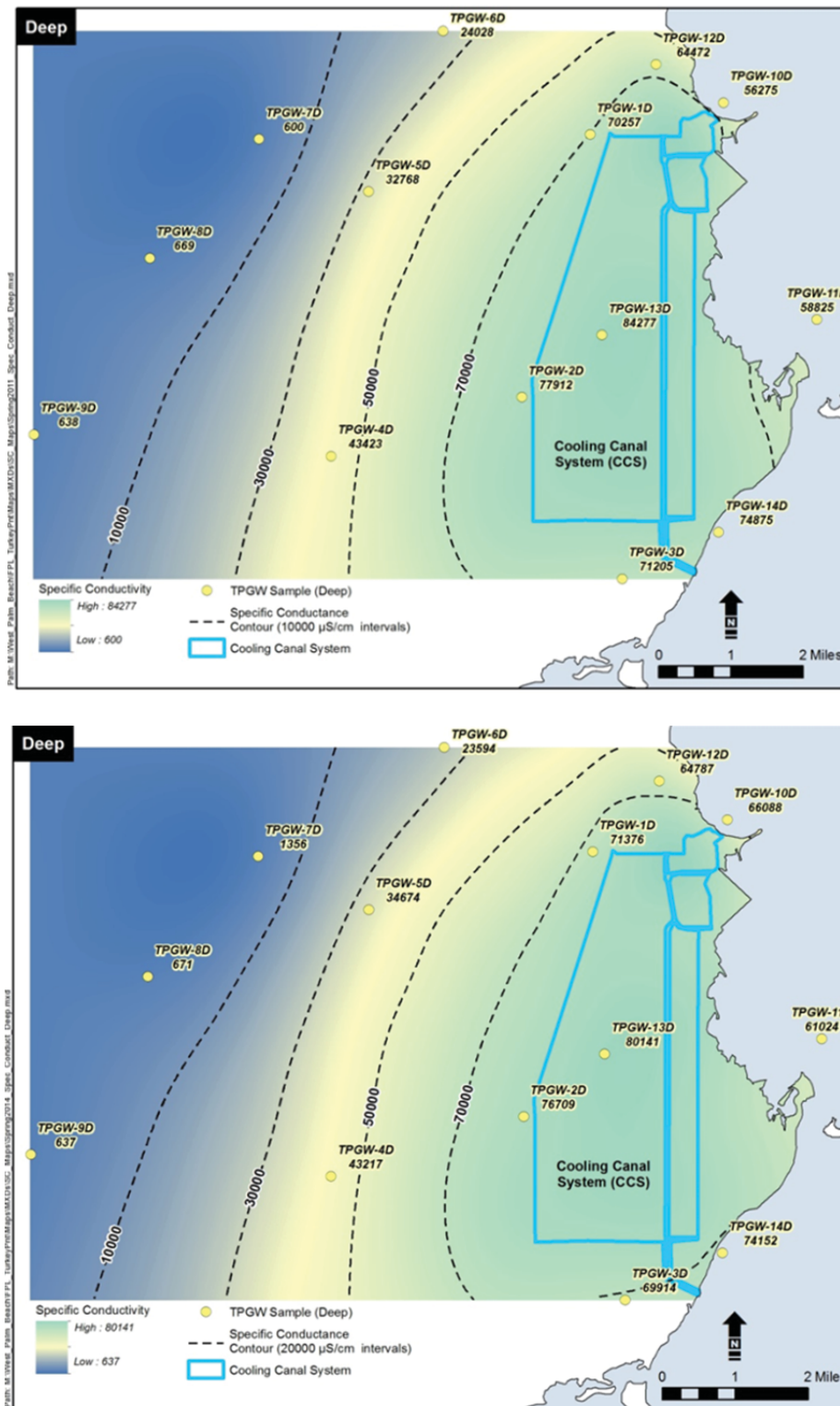


Figure 5.2-6. Deep Well Pre-Uprate (Top) and Post-Uprate (Bottom) Average Specific Conductance Isopleths.