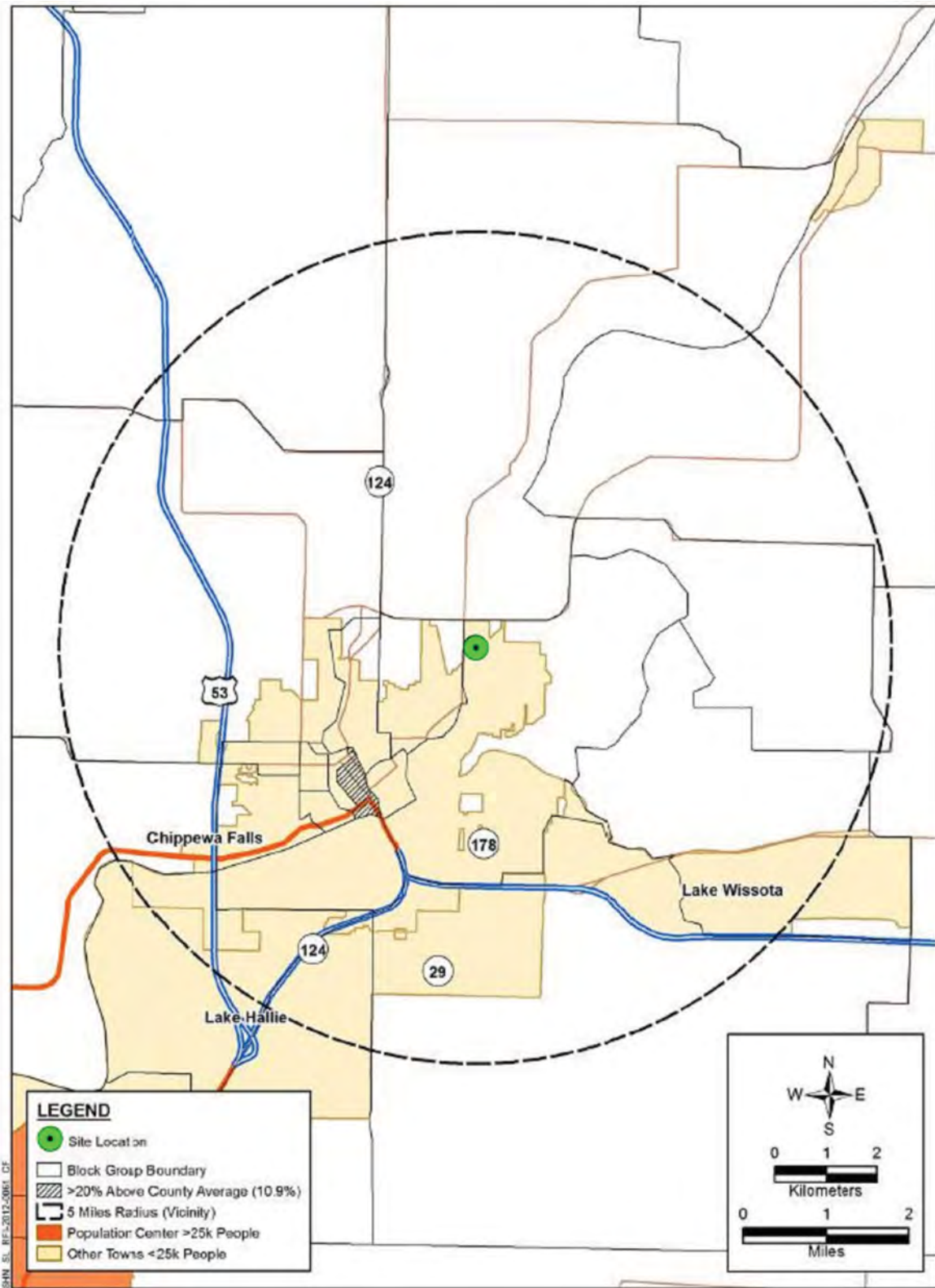


Figure 19.5.2-6 – Census Block Groups with Above Average Low Income Population within a 5-Mile (8-Km) Radius of the Chippewa Falls Site



United States Nuclear Regulatory Commission Official Hearing Exhibit In the Matter of: SHINE MEDICAL TECHNOLOGIES, INC. (Medical Radiotope Production Facility) Commission Mandatory Hearing	Docket #: 05000608 Exhibit #: NRC-006R-MA-CM01 Admitted: 12/15/2015 Rejected: Other: Identified: 12/15/2015 Withdrawn: Stricken:

Figure 19.5.2-7 – Conceptual Layout of the Stevens Point Site

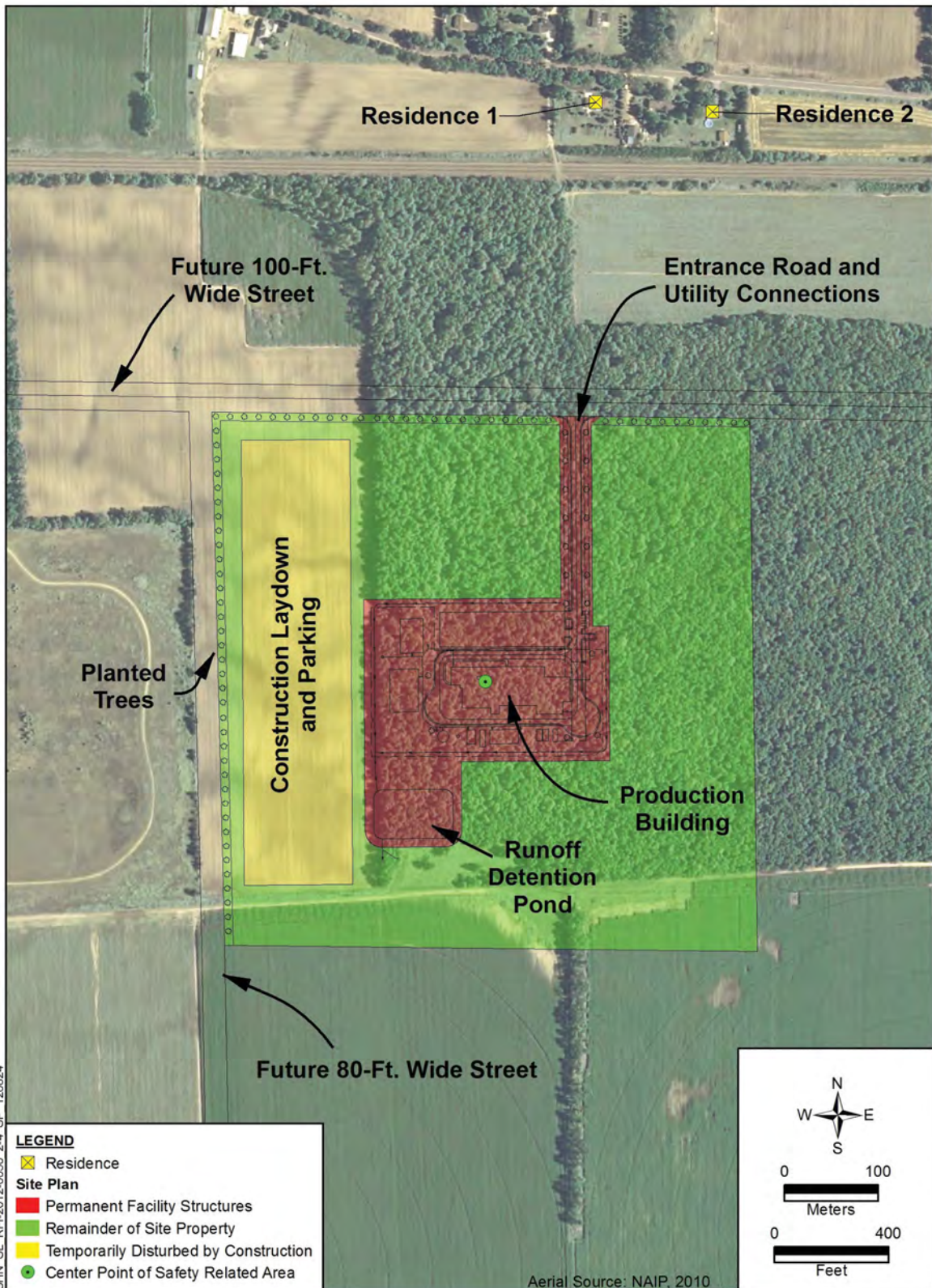


Figure 19.5.2-8 – Sensitive Features Near the Stevens Point Site

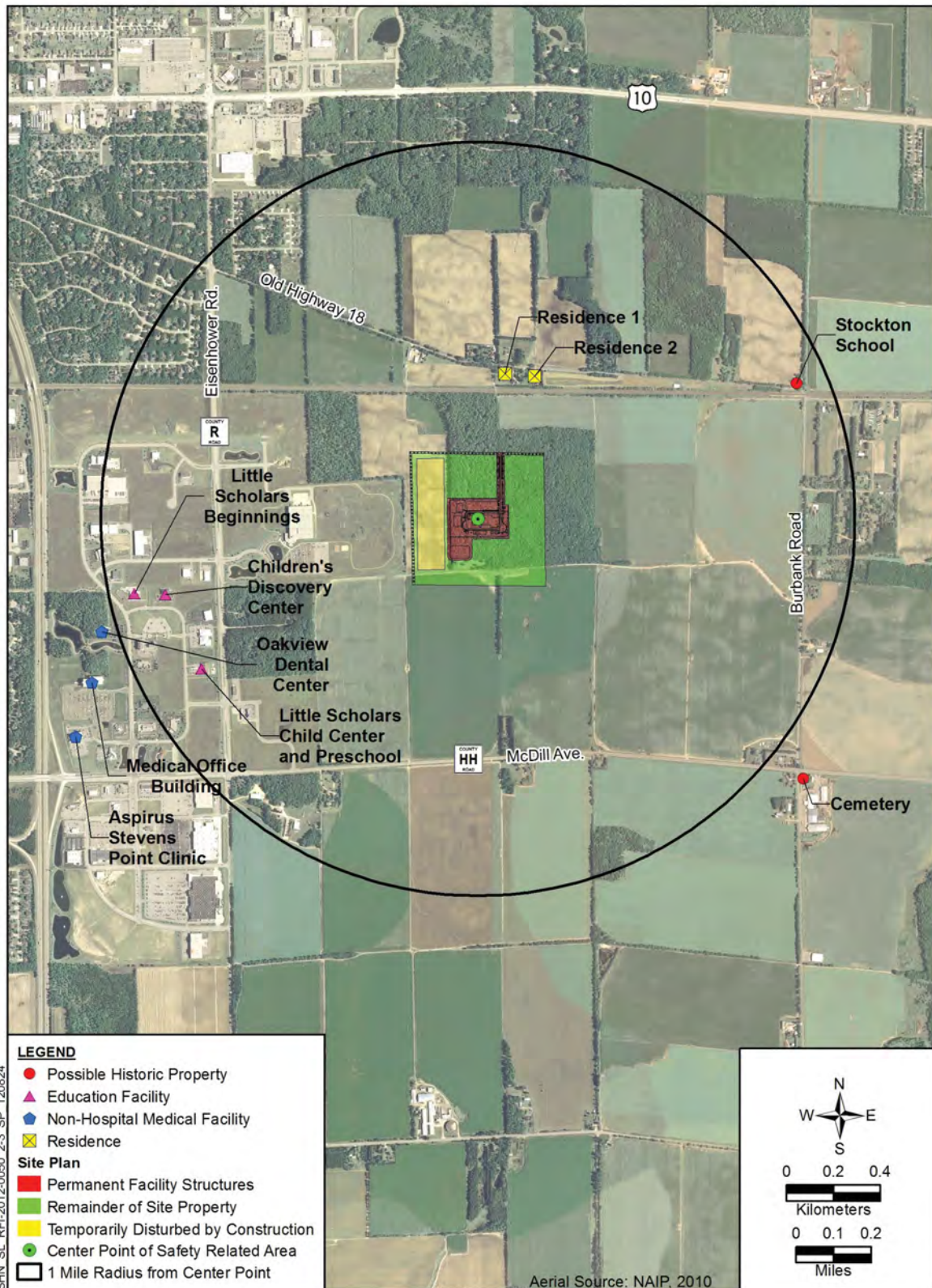


Figure 19.5.2-9 – Census Block Groups with Above Average Low Income Population within a 5-Mile (8-Km) Radius of the Stevens Point Site

