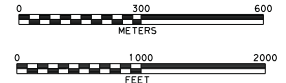
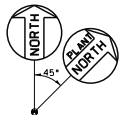


NOTES:
 1. THE HORIZONTAL COORDINATES ARE FLORIDA STATE PLANE COORDINATES, WEST ZONE AND ARE BASED ON THE NORTH AMERICAN DATUM OF 1983 (NAD83).

LEGEND:
 - - - - - DENOTES BOUNDARY OF THE PLANT DESIGN FEATURES IN THE SCOPE OF API1000 CERTIFICATION.

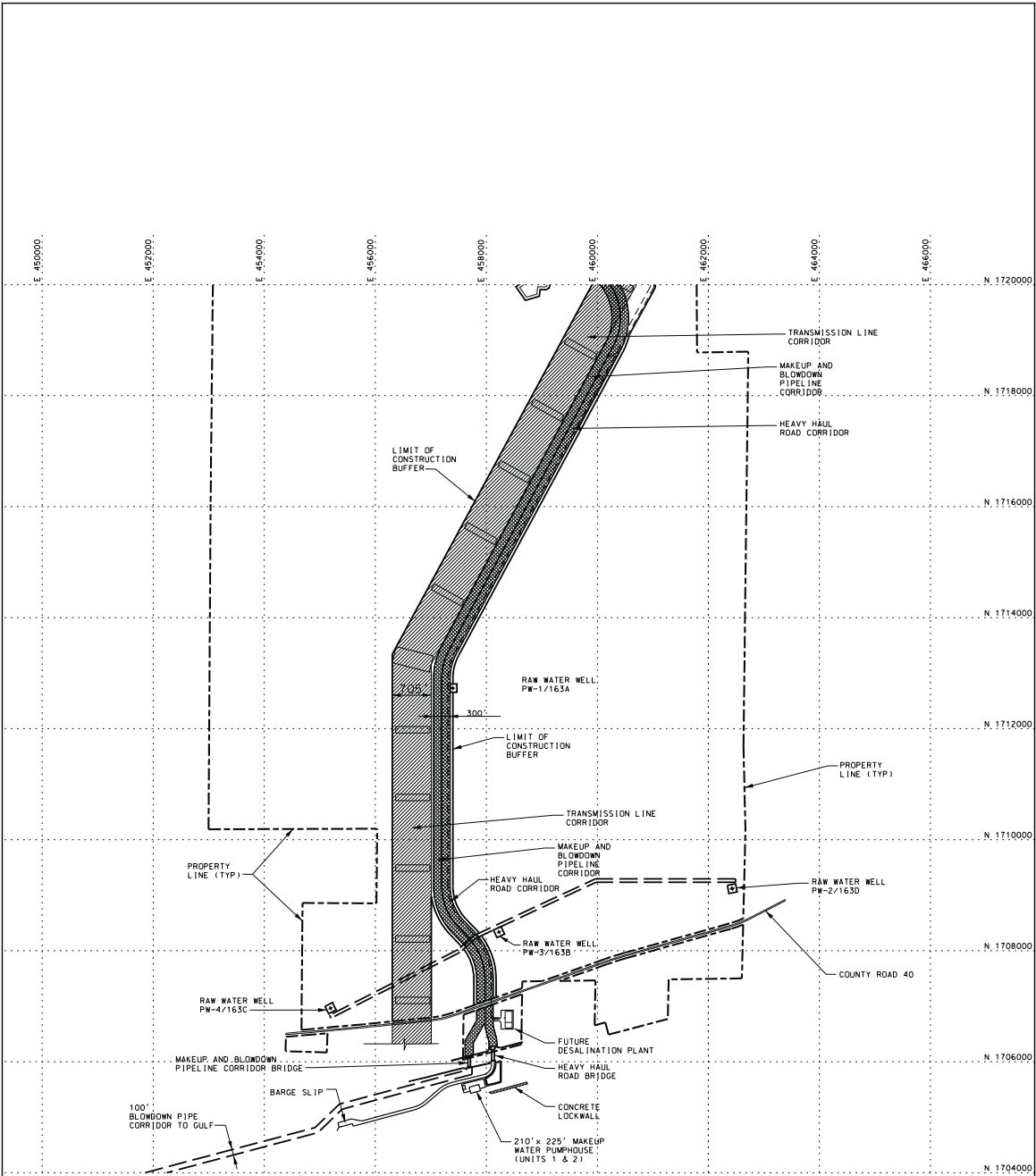


Duke Energy Florida
 Levy Nuclear Plant
 Units 1 and 2
 Part 2, Final Safety Analysis Report

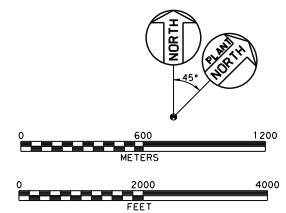
Site Layout

FIGURE 1.1-201 (Sheet 1 of 2)

Rev 6



NOTES:
 1. THE HORIZONTAL COORDINATES ARE FLORIDA STATE PLANE COORDINATES, WEST ZONE AND ARE BASED ON THE NORTH AMERICAN DATUM OF 1983 (NAD83).



Duke Energy Florida
Levy Nuclear Plant
Units 1 and 2
Part 2, Final Safety Analysis Report

Site Layout

FIGURE 1.1-201 (Sheet 2 of 2) Rev 6