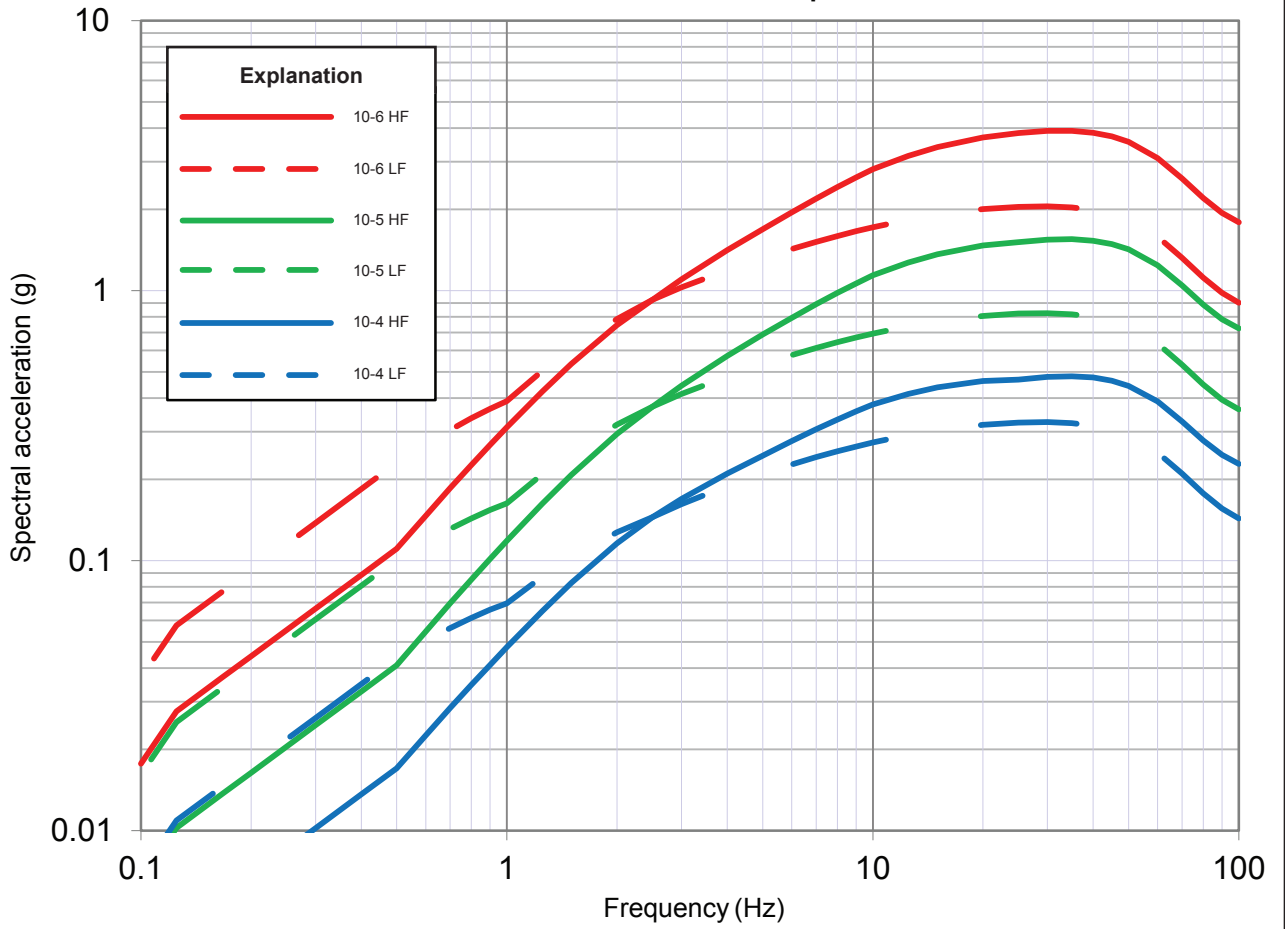


Mean Rock HF and LF Spectra at Lee



WLS COL 2.5-2

WILLIAM STATES LEE III
NUCLEAR STATION UNITS 1 & 2

High and Low Frequency Mean Spectra
for MAFEs of 10^{-4} , 10^{-5} and 10^{-6}

FIGURE 2.5.2-266a

Rev 8