

# SOUTHERN EXPOSURE 15

## South Carolina Emergency Management Division

October 27, 2015



# Briefing Objectives

- Provide an overview of the SE15 Planning Process
- Provide an overview of key planning events
- Provide an overview of key findings

SOUTHERN  
EXPOSURE 15

# Topics for Discussion



- Exercise Origin
- Organizations
- Exercise Goal
- Planning Structure
- Planning Meetings and Events
- Planning and Design
- Exercise Overview
- Findings

SOUTHERN  
EXPOSURE 15

# SE15 Origin



- A need was recognized for more realistic exercises, better integration of the Whole Community and efficient use of limited resources.
- A large-scale nuclear power plant (NPP) exercise was proposed by the NRC, FEMA, and DOE/NNSA.
- SE15 was originally nominated as the Capstone Exercise by FEMA National Exercise Program.

SOUTHERN  
EXPOSURE 15

# Participating Organizations

- A-Team
- American Red Cross
- ANI
- APHIS
- BlueCross BlueShield of SC
- Carolinas Hospital
- CDC
- Chesterfield County
- Clemson Cooperative Extension Service
- Clemson Livestock-Poultry Health
- Darlington County
- DHS
- Dillon County
- DoD Components
- DOE
- DOE RAP
- DOE-ESF12
- DOE-FRMAC
- DOI
- DOL-OSHA
- DOT
- Duke Energy/H.B. Robinson Plant
- EPA
- FDA
- FEMA
- FEMA Region IV
- Florence County
- HHS
- HHS-NIH/NIEHS
- HUD
- Institute of Nuclear Power Operations
- Lee County
- Marion County
- Marlboro County
- McLeod Regional Medical Center
- N/RIA-TF
- NEI
- NRC
- NRC Region II
- SBA
- SC Baptist
- SC Department of Agriculture
- SC Department of Commerce
- SC Department of Employment and Workforce
- SC Department of Health and Environmental Control
- SC Department of Insurance
- SC Department of Natural Resources
- SC Department of Social Services
- SC Department of Transportation
- SC Emergency Management Division
- SC Forestry Commission
- SC Law Enforcement Division
- SC National Guard WMD Civil Support Team
- SC Office of Regulatory Staff
- State of Florida
- State of Georgia
- State of North Carolina
- Sumter County
- The Salvation Army
- USDA
- VA-OEM

# Exercise Goal

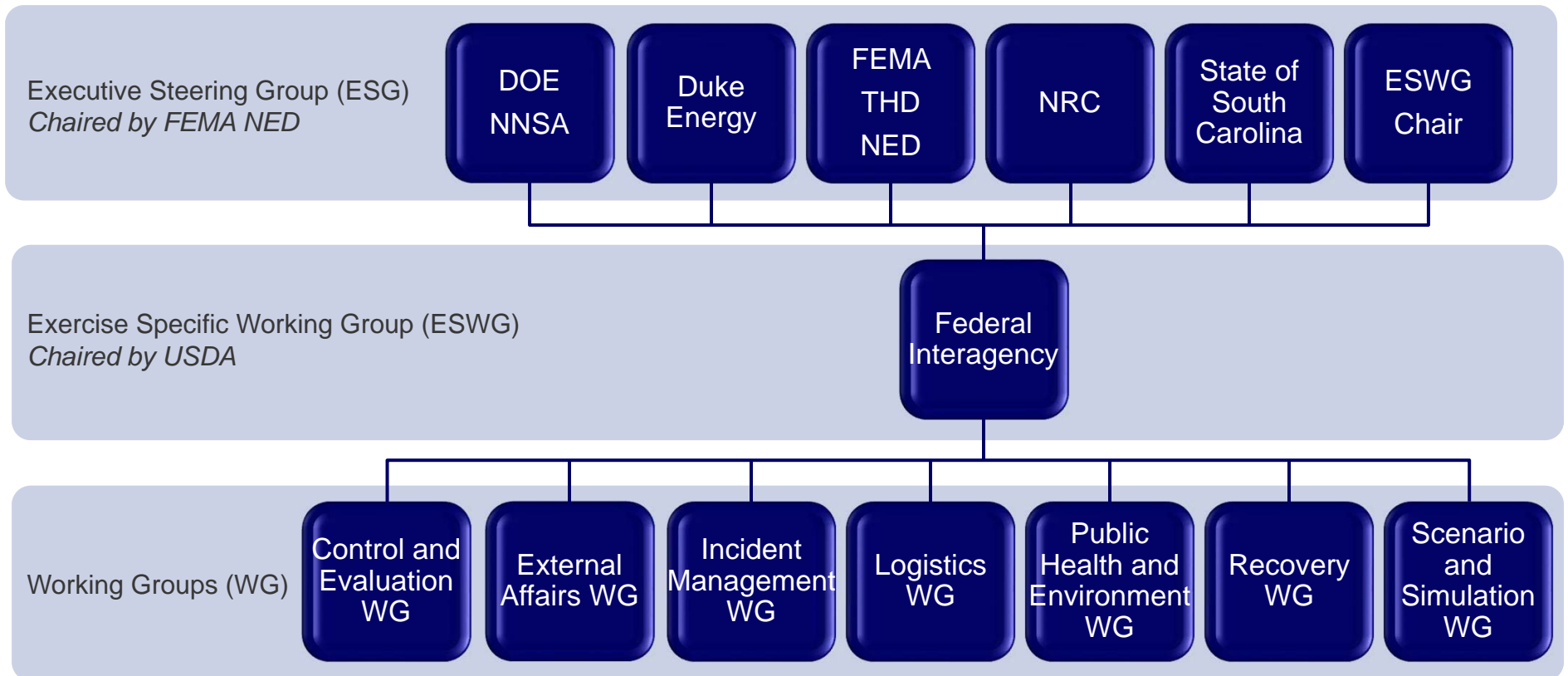


*SE15 and associated preparatory events were designed and conducted to **provide a forum** in which organizations could examine the **coordination of response and recovery activities** during and after a NPP incident; identify the **immediate and long-term recovery needs** of local and state communities following a radiological release; **test capabilities** of trained personnel with specific response and recovery roles and responsibilities; and **foster meaningful interaction and communication** across organizations.*

SOUTHERN  
EXPOSURE 15



# SE15 Design Structure





# SE15 Preparatory Events

- Radiological Release and Response Seminar
- Incident Management Workshop
- Duke Energy TTX
- National Disaster Recovery Framework (NDRF) Workshop
- Price Anderson Act (PAA) and Other Funding Mechanisms Workshop
- Agriculture Response and Recovery Workshop
- HSEEP and FEMA REP Meetings were also held

SOUTHERN  
EXPOSURE 15



# Planning and Design

- Southern Exposure was designed from the beginning as a Full Participation Radiological Emergency Preparedness Ingestion Pathway Exercise (REP IPX)
- Two parallel evaluation structures were created
- Two exercises were occurring simultaneously, all while maintaining independent evaluation structures
- The evaluation criteria were developed by working groups and confirmed by the ESG



# Exercise Overview

SOUTHERN  
EXPOSURE 15

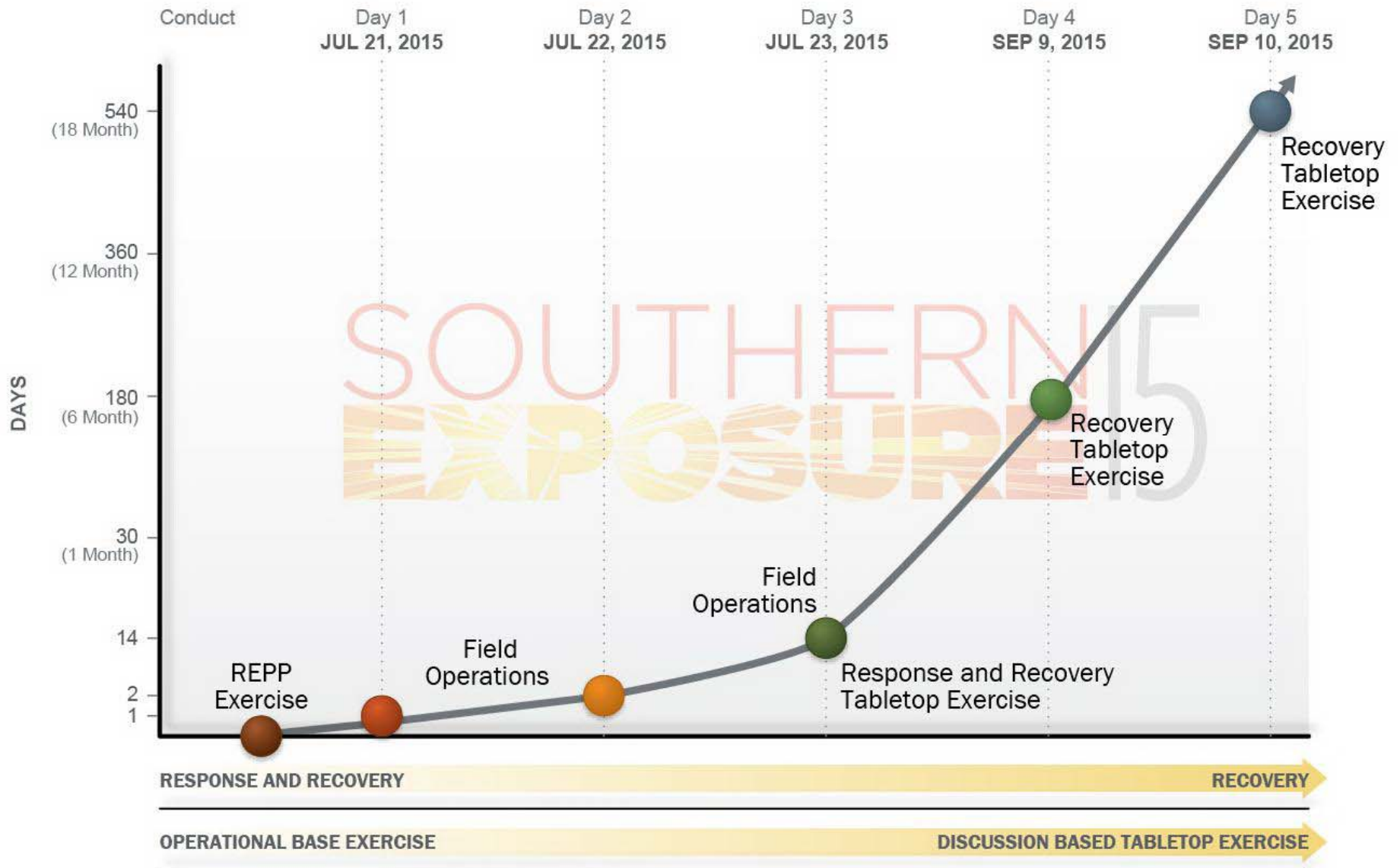
# Scenario Concept



- SE15 (and preparatory events) will involve an incident at the NPP resulting in the release of radiological material into the environment beyond the site boundary. There will be significant consequences to drive decision-making and actions.
- Public information will be a focus at all levels of government, including how messages are generated and disseminated.
- The scenario will focus on the NPP incident, the first few days of response, and will allow for discussion of immediate and long-term recovery issues.

SOUTHERN  
EXPOSURE 15

# Exercise Timeline



# Key Findings – FSE

## Strengths



- Defined Unified Coordination Group (UCG)
- Triage and Decontamination Operations
- Operation of Reception Center
- Interagency Coordination

SOUTHERN  
EXPOSURE 15

# Key Findings – FSE

## Areas for Improvement



- Coordination of Joint Information Center (JIC)
- Liaison Officers
  - Duties and responsibilities
- FRMAC Coordination with the State
  - Completion of Advance Party Checklist
  - Training for FRMAC Technical Proficiency
  - FRMAC Products
- Exercise Design
  - Simulation- Compressed timeline
  - Staging Locations

SOUTHERN  
EXPOSURE 15





# Key Findings

- Public Information- accurate, timely and consistent
- Unified Coordination Group Composition
- Domestic and Livestock Animal Decon/Remediation
- Recovery/ Restoration- remediation ability based on Price Anderson
- Court System delay for Plan of Distribution- unforeseen variables
- Economic Impact- lack of a consistent model

SOUTHERN  
EXPOSURE 15

# State Findings



- Hands on training with Federal Agencies not normally responding in a disaster
- Increased awareness of the scope and magnitude of damage to agribusiness in South Carolina
- Constraints on funds, resources and reimbursement stemming from Price-Anderson in contrast with a Stafford Declaration
- Extraordinary Planning and Coordination requirements
- Lack of long-term waste storage/disposal plan

SOUTHERN  
EXPOSURE 15



## Future SE15-like Exercises

- Conduct during “Off Year” or limit scope
  - Annual state full scale exercise vs. FEMA/NRC evaluated IPX
  - Eliminate duality of evaluations/AAR
  - No fault environment vs. evaluation
  - Time compression associated with typical REP exercises
  - REP out-of-sequence events
- Create a federal staging area or JFO
  - JFO not established due to time and space constraints
- Establish participation commitments early and cut-off

SOUTHERN  
EXPOSURE 15



# NRC Specific Feedback

- The UCG member and the liaisons that we had at the SEOC were of great benefit to the exercise
- Create a method by which a NRC Liaison is embedded into the SEOC during REP exercises or actual events
- NRC Ops Center had difficulty obtaining information on evacuations
- NRC proactive activation of A-Team
- Draft Plan of Distribution progress

SOUTHERN  
EXPOSURE 15



Questions?

SOUTHERN15  
EXPOSURE

# SOUTHERN EXPOSURE 15

## Thank You

Nathan Nienhius

[nnienhius@emd.sc.gov](mailto:nnienhius@emd.sc.gov)

Office: (803)737-8797/ Cell: (803)318-3694

