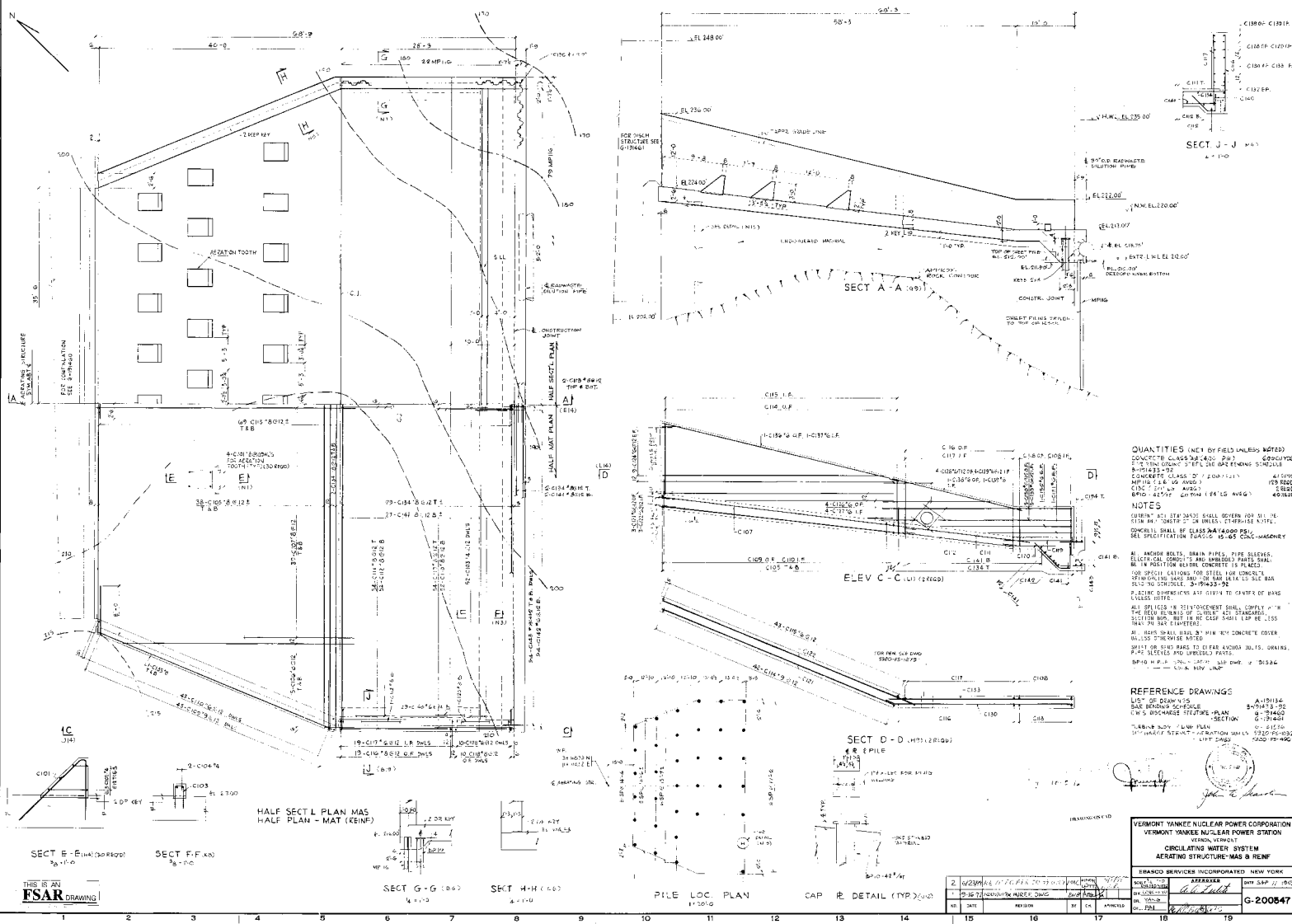


G-200347



QUANTITIES (NET OF FIELD UNLESS NOTED)
 CONCRETE CLASS 4000 PSI
 REINFORCING STEEL SCHEDULE 40
 CONCRETE CLASS 2000 PSI
 REINFORCING STEEL SCHEDULE 40
 STEEL SCHEDULE 40
 STEEL SCHEDULE 40
 STEEL SCHEDULE 40

NOTES
 1. ALL DIMENSIONS ARE GIVEN TO CENTER OF BARS UNLESS NOTED.
 2. ALL SPICES IN REINFORCEMENT SHALL COMPLY WITH THE FOLLOWING SCHEDULE UNLESS OTHERWISE NOTED.
 3. SECTION BAR BARS TO BE CLEAR 1/8" (3.175) FROM ALL SURFACES.
 4. ALL BARS SHALL BE COVERED WITH 1/2" (12.7) CONCRETE UNLESS OTHERWISE NOTED.
 5. SPICES OF BARS SHALL BE CLEAR 1/8" (3.175) FROM ALL SURFACES UNLESS OTHERWISE NOTED.
 6. BARS SHALL BE COVERED WITH 1/2" (12.7) CONCRETE UNLESS OTHERWISE NOTED.

REFERENCE DRAWING
 A-19136
 A-19137
 A-19138
 A-19139
 A-19140
 A-19141
 A-19142
 A-19143
 A-19144
 A-19145
 A-19146
 A-19147
 A-19148
 A-19149
 A-19150

VERMONT YANKEE NUCLEAR POWER CORPORATION
 VERMONT YANKEE NUCLEAR POWER STATION
 BRUNSWICK, VERMONT
 CIRCULATING WATER SYSTEM
 AERATING STRUCTURE - MAS & RENF

BRAND SERVICES INCORPORATED NEW YORK
 DATE: 11/10/80
 DRAWN BY: [Signature]
 CHECKED BY: [Signature]
 APPROVED BY: [Signature]
 G-200347