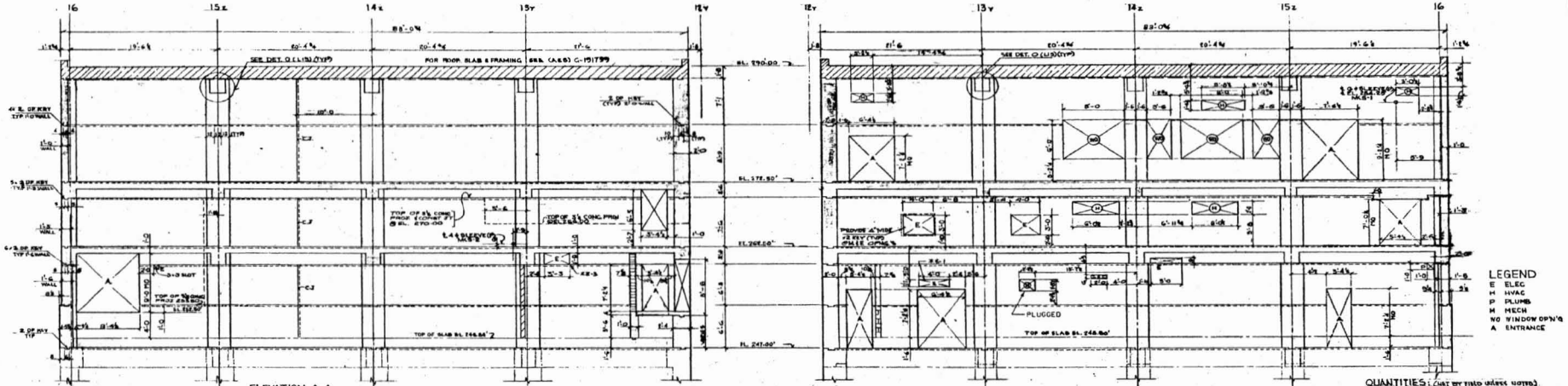


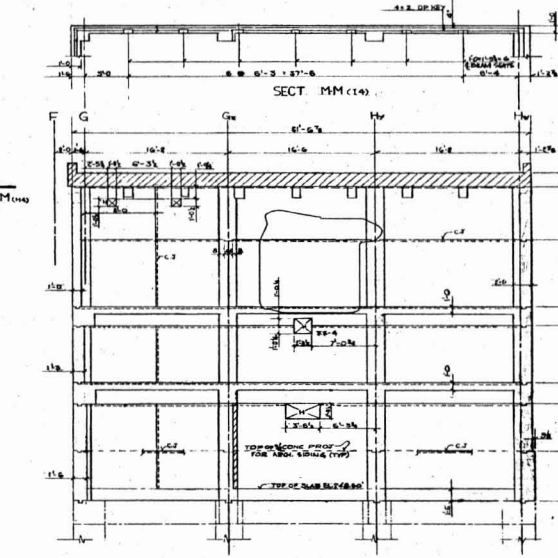
Q-191595



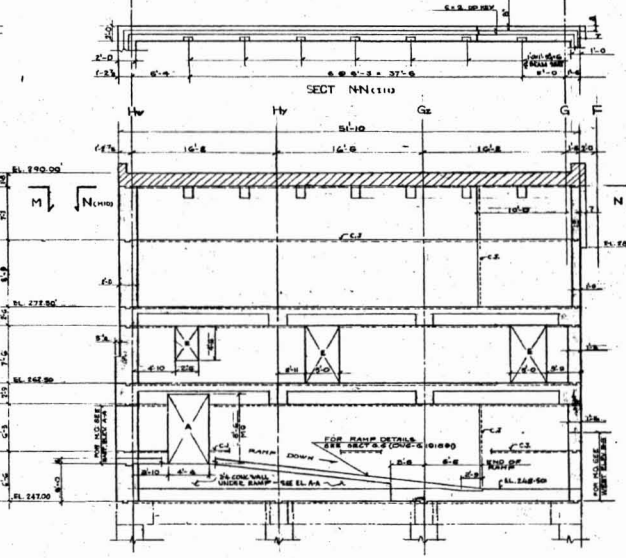
ELEVATION A-A
(East Wall)

ELEVATION B-B
(West Wall)

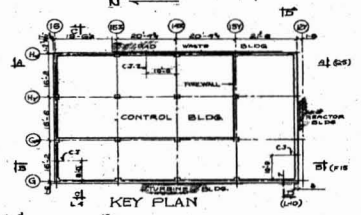
LEGEND
 E ELEC
 H HVAC
 P PLUMB
 M MECH
 NO WINDOW OPEN'G
 A ENTRANCE



ELEVATION C-C
(North Wall)



ELEVATION D-D
(South Wall)



KEY PLAN

QUANTITIES: OBT BY FIELD MARK NOTES
CONCRETE: ALL CONCRETE SHALL BE 4000 PSI STRENGTH
NOTES:
 1. BEFORE WALLS ARE POURED, CHECK WITH FIELD MARKS FOR ALL DIMENSIONS AND FOR EMBEDDING (ANCHORS, TIES, TIPS) AT EACH ELEVATION WITHIN EACH WALL.
 2. THE WALLS SHALL BE CONSTRUCTED IN THE MANNER SHOWN ON THE SECOND CONSTRUCTION IN THE DRAWING (VERTICALLY) THROUGH THE ENTIRE DEPTH OF THE WALL.
 3. FOR CHANGES, NOTES, SEE OTHER Q-191595-01
 4. THE FOLLOWING NOTES SHALL BE CONSIDERED AS SUPPLEMENTARY TO THE GENERAL REQUIREMENTS OF THE SPECIFICATION IN EFFECT FOR THE PROJECT AND SHALL BE APPLICABLE TO ALL CONCRETE SURFACES WHICH WILL REMAIN PERMANENTLY EXPOSED.
 5. CARE SHALL BE EXERCISED TO MAINTAIN UNIFORMITY OF CONCRETE COLOR. ONLY ONE MIX DESIGN AND ONE DESIGN STRENGTH SHALL BE USED. VARIATIONS IN MIX DESIGN OR IN THE QUANTITY OF PORTLAND CEMENT PER CUBIC YARD SHALL BE AVOIDED IF POSSIBLE. ONLY ONE TYPE AND BRAND OF CEMENT FROM THE SAME MILL AND ONLY ONE SOURCE AND ONE MAXIMUM SIZE OF AGGREGATE SHALL BE USED.
 6. ANY ACCUMULATIONS OF HARDENED OR PARTIALLY HARDENED CONCRETE ON THE FORMS ABOVE THE GENERAL LEVEL OF THE CONCRETE, OR BELOW SUCH LEVELS, SHALL BE REMOVED BEFORE THE WALLS ARE PLACED. WHEN FORMS ARE REMOVED, SURFACES SHALL BE EVEN AND SMOOTH, FREE FROM AGGREGATE POCKETS OR HONEYCOMB. THE FACE FORM SHALL BE HELD TIGHT AGAINST THE HARDENED CONCRETE AT ALL POINTS ALONG THE JOINT TO PREVENT LEAKAGE OF MORTAR.
 7. THE PLACING OF CONCRETE SHALL BE CARRIED ON CONTINUOUSLY BETWEEN CONSTRUCTION JOINTS SHOWN ON THE DRAWINGS. THE CONCRETE SHALL BE PLACED IN A SINGLE LAYER, LAYER AS POSSIBLE, TO AN UNCHANGING ELEVATION STRIP SET HORIZONTALLY IN THE FORMS. CONCRETE SHALL BE PLACED WITH A SLUMP LOW ENOUGH TO AVOID THE EXCESSIVE ACCUMULATION OF WATER AND LAITANCE FORMATION ON THE SURFACE OF THE WALL. WHEN CONCRETING IS TO BE RESUMED AT A CONSTRUCTION JOINT, THE HARDENED CONCRETE SHALL BE CLEANED AND SATURATED.
 8. IMMEDIATELY AFTER REMOVING FORMS, ALL CONCRETE SURFACES SHALL BE INSPECTED AND ANY POOR JOINTS, Voids, STONE POCKETS OR OTHER DEFECTIVE AREAS AND ALL DEFECTS SHALL BE REPAIRED BEFORE FINISHING THE CONCRETE IS THROUGH DRY. THE PATCH SHALL BE FINISHED IN SUCH A MANNER SO AS TO MATCH THE ADJACENT SURFACE.
REFERENCE DRAWINGS:
 FOR GENERAL SEE DWG. Q-191595-01
 FOR WALL DESIGN SEE DWG. Q-191595-01
 FOR WALL DESIGN SEE DWG. Q-191595-01
 FOR WALL DESIGN SEE DWG. Q-191595-01
 FOR WALL DESIGN SEE DWG. Q-191595-01

REFERENCE DRAWINGS:
 FOR GENERAL SEE DWG. Q-191595-01
 FOR WALL DESIGN SEE DWG. Q-191595-01
 FOR WALL DESIGN SEE DWG. Q-191595-01
 FOR WALL DESIGN SEE DWG. Q-191595-01
 FOR WALL DESIGN SEE DWG. Q-191595-01

NOTES (CONT.)
 1) ALL CONCRETE MASONRY WALL DESIGNATIONS GIVEN.
 2) MASONRY WALLS ARE CONTROLLED PER REQUIREMENTS OF THE SPECIFICATION.
 3) SEE DWG. Q-191595-01 FOR MASONRY WALL DESIGNATIONS.
 4) SEE DWG. Q-191595-01 FOR MASONRY WALL DESIGNATIONS.
 5) SEE DWG. Q-191595-01 FOR MASONRY WALL DESIGNATIONS.
 6) SEE DWG. Q-191595-01 FOR MASONRY WALL DESIGNATIONS.
 7) SEE DWG. Q-191595-01 FOR MASONRY WALL DESIGNATIONS.
 8) SEE DWG. Q-191595-01 FOR MASONRY WALL DESIGNATIONS.
 9) SEE DWG. Q-191595-01 FOR MASONRY WALL DESIGNATIONS.
 10) SEE DWG. Q-191595-01 FOR MASONRY WALL DESIGNATIONS.
 11) SEE DWG. Q-191595-01 FOR MASONRY WALL DESIGNATIONS.
 12) SEE DWG. Q-191595-01 FOR MASONRY WALL DESIGNATIONS.
 13) SEE DWG. Q-191595-01 FOR MASONRY WALL DESIGNATIONS.
 14) SEE DWG. Q-191595-01 FOR MASONRY WALL DESIGNATIONS.
 15) SEE DWG. Q-191595-01 FOR MASONRY WALL DESIGNATIONS.
 16) SEE DWG. Q-191595-01 FOR MASONRY WALL DESIGNATIONS.
 17) SEE DWG. Q-191595-01 FOR MASONRY WALL DESIGNATIONS.
 18) SEE DWG. Q-191595-01 FOR MASONRY WALL DESIGNATIONS.
 19) SEE DWG. Q-191595-01 FOR MASONRY WALL DESIGNATIONS.
 20) SEE DWG. Q-191595-01 FOR MASONRY WALL DESIGNATIONS.

REV	DESCRIPTION	BY	CHKD.	APPRO.
1	NEW SET PER 200-1177-2004-0083	MD	MD	MD
2	FOR 99-403	CS	SB	CSB

ENTERTY NUCLEAR VERMONT YANKEE
 VERMONT
 CONTROL ROOM BLDG.
 EXT. WALL ELEV. -M
 DRAWING NO. C-191595

THIS IS AN
FSAR
 DRAWING

2/16/2004 2:42:22 PM
 C:\Users\james\Documents\Q-191595-01.dwg
 401-800-11166
 10/20/2004 2:42:22 PM