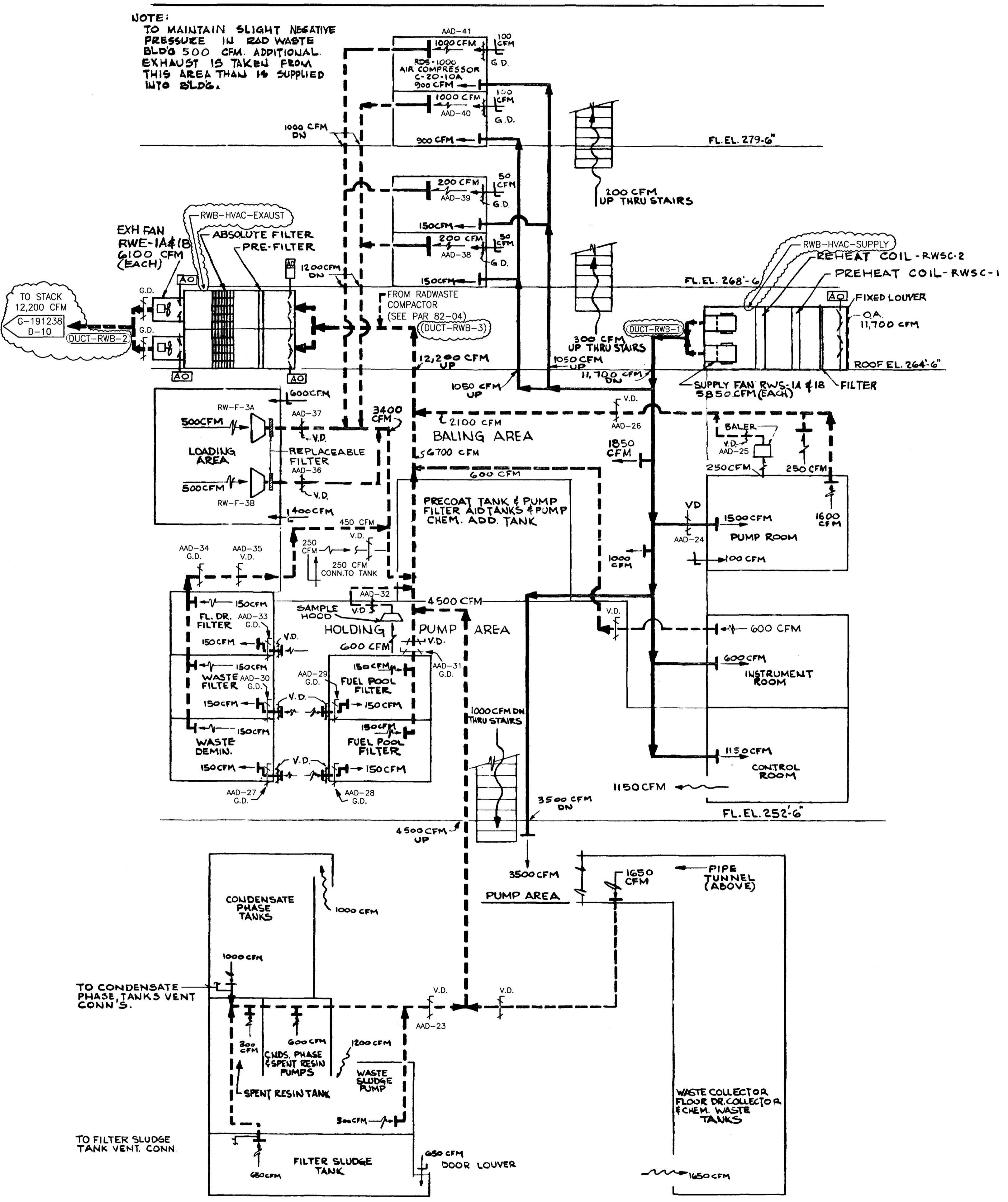


LEGEND

- O. A. OUTSIDE AIR
- SUPPLY AIR
- EXHAUST AIR
- CFM CUBIC FEET PER MINUTE
- G.D. GRAVITY DAMPER
- MANUAL OPERATED DAMPER
- AIR OPERATED DAMPER
- V.D. VOLUME DAMPER

NOTE:
TO MAINTAIN SLIGHT NEGATIVE
PRESSURE IN RAD WASTE
BLDG 500 CFM ADDITIONAL
EXHAUST IS TAKEN FROM
THIS AREA THAN IS SUPPLIED
INTO BLDG.



NOTES

PIPING 2 INCHES AND SMALLER TO BE FIELD RUN. FIELD TO LOCATE, DETERMINE SIZE AND SET ALL PIPE SLEEVES IN CONCRETE FLOORS BEFORE CONCRETE IS PLACED. SEE STRUCTURAL DRAWINGS FOR TYPICAL DETAILS OF PIPE SLEEVES AND FOR FLOOR OPENINGS REQUIRING SPECIAL FLOOR FRAMING.

OPENINGS 8 INCH IN DIAMETER AND OVER FOR SHOP FABRICATED PIPING, IN GRATING AND CHECKERED PLATE FLOORS, SHALL BE PROVIDED IN THE SHOP. ALL OTHER OPENINGS ARE TO BE PROVIDED IN THE FIELD.

ALL OPENINGS, EXCEPT THOSE FOR STRESS ANALYZED PIPE LINES, SHALL CLEAR PIPE INSULATION BY A MINIMUM OF 1 INCH BEYOND EXTREME PIPE MOVEMENT.

ALL HEATING, VENTILATING AND AIR CONDITIONING EQUIPMENT FURNISHED SHALL SUIT THE ARRANGEMENTS, OPENINGS, BASES, SUPPORTS, ETC. PROVIDED FOR THE EQUIPMENT AS INDICATED ON THESE DRAWINGS. ANY CHANGES ON THESE DRAWINGS RESULTING FROM EQUIPMENT DEVIATIONS SHALL BE THE RESPONSIBILITY OF THE HEATING AND VENTILATING CONTRACTOR.

ALL PIPING AND INSTRUMENTATION IS NON-SAFETY CLASS.

- REFERENCE DRAWINGS
- HVAC - RADWASTE BLDG. G-191245
 - HVAC - EQUIPMENT RM. SH-1 G-191246
 - HVAC - EQUIPMENT RM. SH-2 G-191247
 - HVAC - EQUIPMENT RM. SH-3 G-191248
 - HVAC - REACTOR BLDG. PLANS - SH-1 G-191249
 - HVAC - REACTOR BLDG. PLANS - SH-2 G-191250
 - HVAC - REACTOR BLDG. PLANS - SH-3 G-191251
 - P&ID - RADWASTE SYSTEM 750 E 496 SH 1-3

ASBUILT

DATE 2-25-72

RADWASTE BUILDING

9	REVISED PER CU 2002-034	12-1-04	2-15-04	12-8-04
8	REVISED PER ER 2000-1056	NL	JJS	MS
REV	DESCRIPTION	BY	CHKD.	APPD.
ENTERGY NUCLEAR VERMONT YANKEE VERNON, VERMONT				
DRAWING TITLE	HVAC - FLOW DIAGRAM RADWASTE BUILDING			
DRAWING NO.	G-191236			

THIS IS AN
FSAR
DRAWING