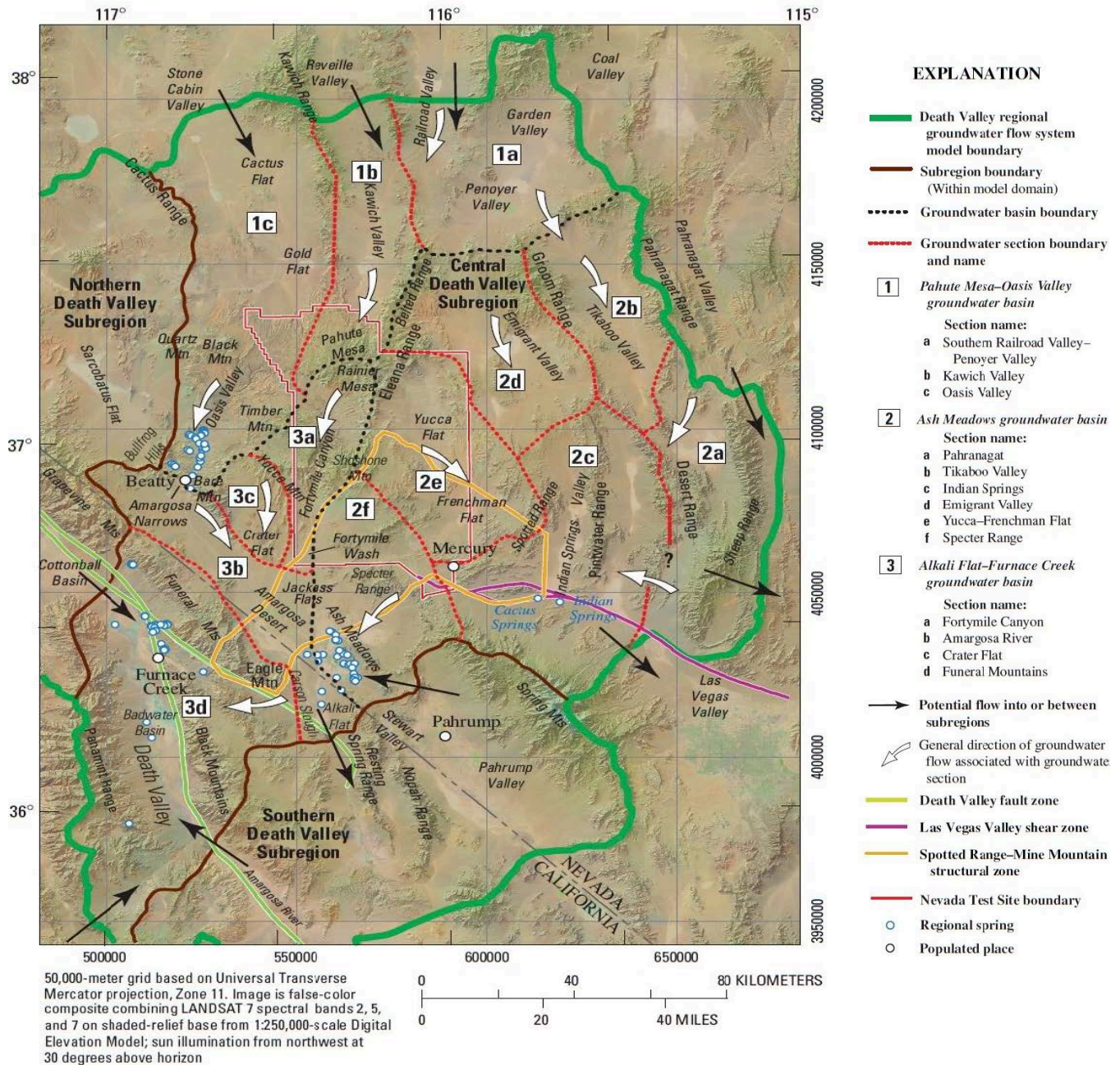


Regional Groundwater Flow System



Death Valley Regional Groundwater Flow System (green outline) showing groundwater flow directions (white and black arrows) and groundwater basins (numbered). The proposed Yucca Mountain repository is located in the Alkali Flat-Furnace Creek groundwater basin (number 3a). (Figure 2-3 in the Draft Supplement)

From U.S. Geological Survey Professional Paper 1711, 2010