

**DCH  
SYSTEM**

DICKINSON  
COUNTY  
MEMORIAL  
HOSPITAL

September 8, 2015

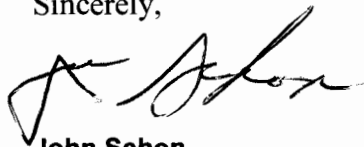
Nuclear Material Licensing Branch  
Nuclear Regulatory Commission Region III  
2443 Warrenville Road Suite 210  
Lisle, IL 60532-4352

**Re: Materials License No. 21-18889-01**

This letter is to request the removal of authorized user Dr. Bayani Manzano and Dr. Danilo Zapanta from our license. They have terminated their employment with DCHS effective August 28, 2015.

If you have questions, please contact Shan Marlette, Consultant Physicist @ (906) 225-6967.

Sincerely,



**John Schon**  
**Administrator/CEO**  
Dickinson County Healthcare System

**John Schon**  
**Administrator/CEO**

1721 S. Stephenson  
Iron Mountain  
Michigan  
49801

**Phone**  
906/774/1313

RECEIVED SEP 09 2015

# Extremely Urgent

This envelope is for use with the following services: **UPS Next Day Air®**  
**UPS Worldwide Express™**  
**UPS 2nd Day Air®**

Visit **ups.com®** or call **1-800-PICK-UPS®** (1-800-742-5811) to schedule a pickup or find a drop off location near you.

### Domestic Shipments

- To qualify for the Letter rate, UPS Express Envelopes may only contain correspondence, urgent documents, and/or electronic media, and must weigh 8 oz. or less. UPS Express Envelopes containing items other than those listed or weighing more than 8 oz. will be billed by weight.

### International Shipments

- The UPS Express Envelope may be used only for documents of value. Certain countries consider electronic media as of value. Visit [ups.com/importexport](http://ups.com/importexport) to verify if your shipment is classified as a restricted item.
- To qualify for the Letter rate, the UPS Express Envelope must weigh 8 oz. or less. UPS Express Envelopes weighing more than 8 oz. will be billed by weight.

**Note:** Express Envelopes are not recommended for shipments containing sensitive personal information or breakable items or cash equivalent.

Do not use this envelope for:

- UPS Ground**
- UPS Standard**
- UPS 3 Day Select®**
- UPS Worldwide Expedited®**

**UPS Next Day Air®** *Early A.M.*

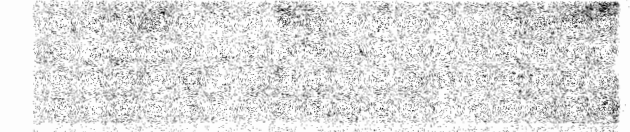
---

Shipping Document

WEIGHT	LTR <input checked="" type="checkbox"/>	WEIGHT	DIMENSIONAL WEIGHT	LARGE PACKAGE <input type="checkbox"/>	SHIPPER RELEASE <input type="checkbox"/> 1+
--------	--	--------	--------------------	---	--

Shipper authorizes UPS to act as forwarding agent for export control and customs purposes. Shipper certifies that these commodities, technology or software, if exported from the United States, were exported in accordance with the Export Administration Regulations. Diversion contrary to law is prohibited.

SATURDAY DELIVERY



RECEIVED SEP 09 2015

SHIPMENT FROM  
 UPS ACCOUNT NO. **4 2 0 6 0 9**

REFERENCE NUMBER

TELEPHONE  
**RADIOLOGY DEPT 906-776-5418**

**DICKINSON COUNTY HEALTHCARE SYSTEM**  
**1721 S STEPHENSON AVE**

**IRON MOUNTAIN MI 49801 3637**  
 EXTREMELY URGENT DELIVERY TO

TELEPHONE  
*Nuclear Material Licensing Branch*  
*Nuclear Regulatory Commission*  
*2443 Warrenville Rd Suite 210*  
*Lisle IL 60532-4355*

**Next Day Air®** *Early A.M.* **1+**

1Z 420 609 21 1010 170 1