

# R. 77 W.

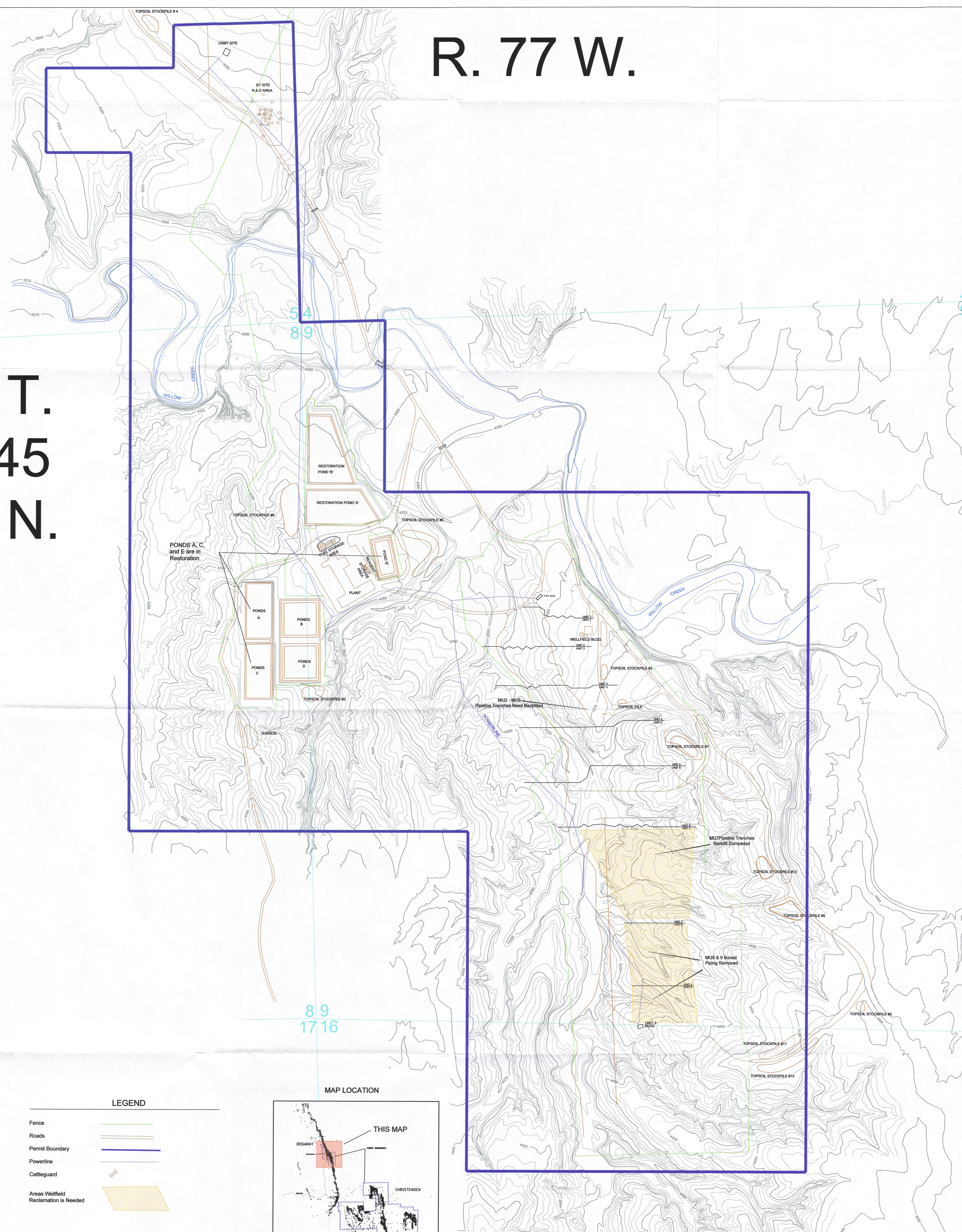
# T. 45 N.

1180000 -  
1179000 -  
1178000 -  
1177000 -  
1176000 -  
1175000 -  
1174000 -  
1173000 -  
1172000 -  
1171000 -

54  
89

89  
1716

4  
9



PONDS A, C, and E are in Restoration

MU2 - MU6  
Pipelining Trenches Need Backfilled

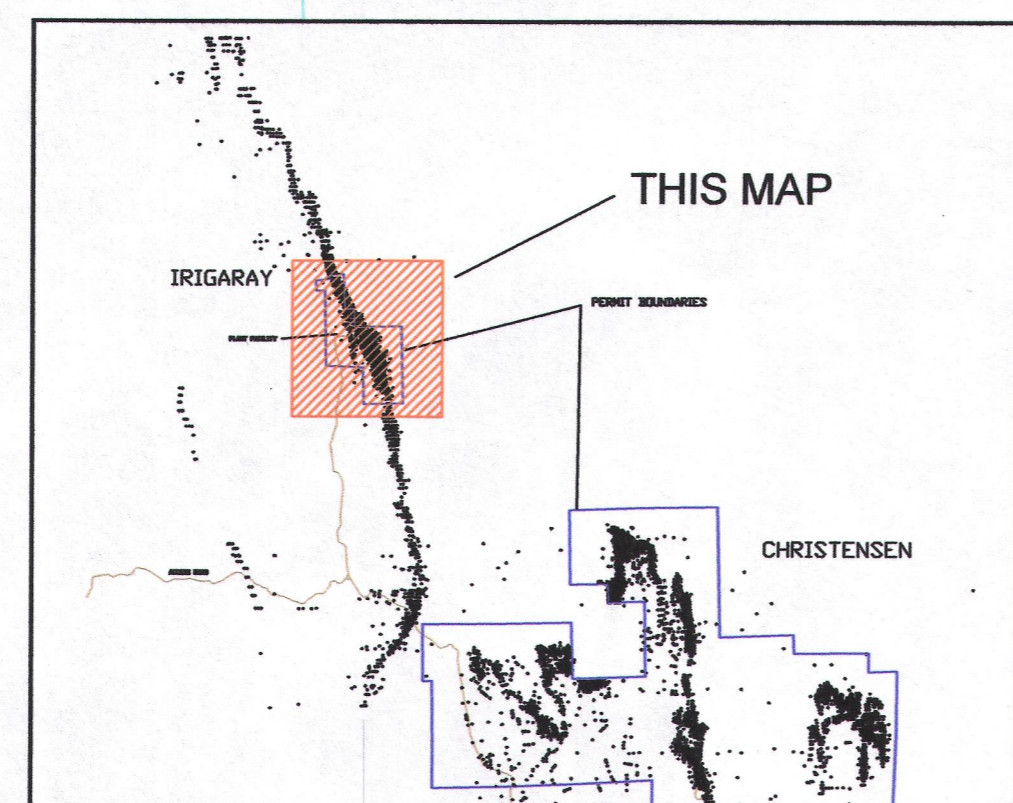
MU2 & 9 Buried Piping Removed

MU2 Pipelines Trenches Backfill Completed

### LEGEND

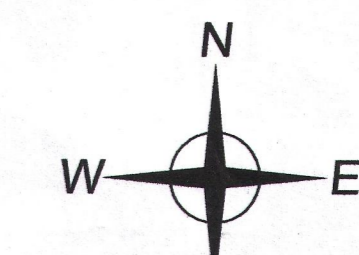
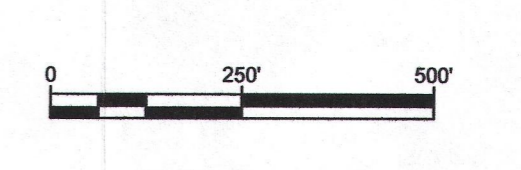
- Fence
- Roads
- Permit Boundary
- Powerline
- Cattleguard
- Areas Wellfield Reclamation is Needed

### MAP LOCATION



907 North Poplar St., Suite 260, Casper, WY 82601 307-234-8235

**Irigaray Project**  
**Area Facilities Location Map**  
 Permit to Mine #478  
 2014-2015 Annual Report to WDEQ-LQD  
 Johnson & Campbell Counties, Wyoming



Rev. No.	Description	Date	By	Checked:	Sheet:
1	Updated 2009 CMI Original for 2010	August 2010	CEO_U1		
2	Updated for 2011-2012 Annual Rpt.	Sept. 2012	CEO_U1		
3	Added Areas Restoration Completed	Aug. 2015	PMA_U1		

D05