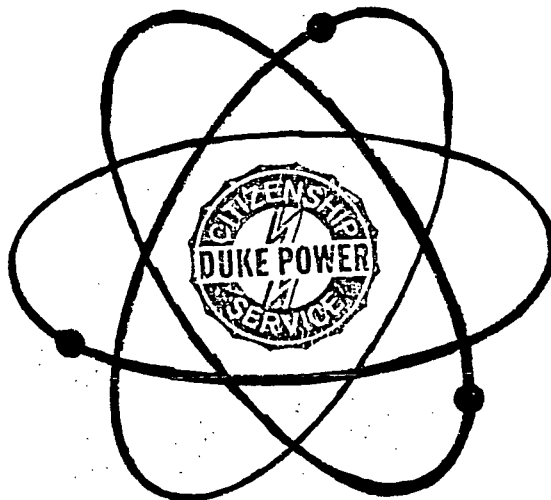


DUKE POWER COMPANY

OCONEE NUCLEAR STATION

EMERGENCY PLAN IMPLEMENTING PROCEDURES



APPROVED:

M. S. Tuckman
M. S. Tuckman, Station Manager

12/9/86
Date Approved

12/9/86
Effective Date

Volume C

Revision 86-7

December, 1986

8612300268 861217
PDR ADOCK 05000269
F PDR

VOLUME C

TABLE OF CONTENTS

	Emergency Telephone Numbers - (86-4, 09/30/86)
RP/0/B/1000/01	Emergency Classification - (12/09/86)
RP/0/B/1000/02	Notification of Unusual Event - (03/07/86)
RP/0/B/1000/03	Alert - (03/07/86)
RP/0/B/1000/04	Site Area Emergency - (03/07/86)
RP/0/B/1000/05	General Emergency - (03/07/86)
RP/0/B/1000/06	Protective Action Recommendations - (04/30/85)
RP/0/B/1000/07	Security Event - (04/30/85)
RP/0/B/1000/08	Oconee Nuclear Data Transmission from TSC - (1/4/85)
RP/0/B/1000/09	Procedure for Site Assembly (07/29/86)
RP/0/B/1000/10	Procedure for Emergency Evacuation of Station Personnel - (6/1/84)
RP/0/B/1000/11	Dose Extension (11/29/84)
RP/0/B/1000/12	Determination of Protective Action Guides by Control Room Personnel or Emergency Coordina- tor During a Radiological Accident (07/29/86)
RP/0/B/1000/14	Spent Fuel Transport Emergency Plan (10/24/86)
RP/0/B/1000/15	Offsite Communicator - (03/06/86)
RP/0/B/1000/16	Medical Response - (08/01/86)

Confidential
Not For Publication

EMERGENCY TELEPHONE NUMBERS

This enclosure provides a listing of telephone numbers for various personnel and agencies that may have a part in dealing with an emergency situation or providing other assistance as needed at Oconee Nuclear Station.

Confidential
Not For Publication

EMERGENCY TELEPHONE NUMBERS

This directory provides a listing of telephone numbers for various personnel and agencies that may have a part in dealing with an emergency situation or providing other assistance as needed at Oconee Nuclear Station.

TABLE OF CONTENTS

BACKUP CRISIS MANAGEMENT CENTER - (Liberty)	15
CRISIS MANAGEMENT CENTER	14
CRISIS NEWS CENTER.	16
DUKE EMERGENCY RADIO	9
EMERGENCY COUNT-ROOM.	12
FACILITY LOCATIONS	10
NOTIFICATION OF AGENCIES, CRISIS MANAGEMENT TEAM.	1 - 7
NUCLEAR REGULATORY COMMISSION	7
OCONEE TELEPHONE ACCESS CODES	11
OCONEE COUNTY TELEPHONE NUMBERS	18
OFFSITE DOSE ASSESSMENT	18
OPERATIONAL SUPPORT CENTER.	13
PICKENS COUNTY TELEPHONE NUMBERS	17
TECHNICAL SUPPORT CENTER.	12
SELECTIVE SIGNALING	8

Confidential
Not For Publication

DUKE POWER COMPANY
OCONEE NUCLEAR STATION

NUMBER CODE FOR IDENTIFYING PERSONNEL/ACTIVITIES TO BE NOTIFIED

CODE

1. NUCLEAR REGULATORY COMMISSION by Red Phone within one hour.

See Section 14 for additional alternate numbers

2. UNIT COORDINATOR/OPERATIONS DUTY ENGINEER who will notify:

A. Superintendent of Operations

R. L. Sweigart, Office Ext. 2210

Home 654-1956

B. Station Manager/Emergency Coordinator (or alternate as listed in number 8) .

M. S. Tuckman, Office Ext. 2211

Home (Pager 830) 882-8522

C. Compliance Engineer (Unusual Event Only) Ext. 2229

After Hours (Pager 807) Duty Roster

D. Nuclear Production Duty Engineer 704-373-5491

3. SOUTH CAROLINA WARNING POINT

South Carolina Highway Department 41*
(See Page 8 for Selective Signaling Instructions)

Alternate number should Selective Signaling be out of service 737-1030

Alternate number (S.C. Emergency Preparedness Agency) 734-8020

NOTE: The above number is also the state Emergency
Operations Center number.

Telecopier - S.C. Emergency Preparedness 734-8062

Confidential
Not For Publication

4. COUNTY EMERGENCY PREPAREDNESS AGENCIES (41* - Selective Signaling)

(See Page 8 for Selective Signaling instructions)

Oconee County Emergency Preparedness	Selective Signaling 417
Alternate Number - 24 hour, Pager 251.	638-3097
Alternate Number - 24 hour, Pager 251.	638-3678
Pickens County Emergency Preparedness	Selective Signaling 419
Alternate Number - (0830-1700)	878-7808
Alternate Number - 24 hour, Pager 77	878-2421

5. COUNTY SHERIFF'S DEPARTMENTS

(See Page 8 for Selective Signaling instructions)

Oconee County (24 hours)	Selective Signaling 416
Alternate Number	638-3678
Pickens County (24 hours)	Selective Signaling 410
Alternate Number	878-2421
Alternate Number	878-1666
Alternate Number	878-3500

6. MEDICAL ASSISTANCE

Oconee Memorial Hospital Ambulance Service	882-4611
Oconee Memorial Hospital Switchboard/Supervisor of Nursing .	882-3351

Additional Medical assistance may be provided through the following institutions:

Greenville Memorial Hospital (Charge Nurse)	242-7139
Pickens County Ambulance Service	868-2373
Cannon Memorial Hospital/Supervisor of Nursing	878-4791
Alternate Number	859-0014
Easley Baptist Hospital/Supervisor of Nursing	859-6365

7. FIRE ASSISTANCE

Oconee County Rural Fire Protection Association	638-5846
Six Mile Fire Department (Keowee Hydro)	878-2421
NOTE: Request Pickens Sheriff Dispatcher to contact Fire Department.	
Woods or Forest Fire (Oconee County, Oakway Tower)	972-3600
Woods or Forest Fire (Pickens County, Woodall Mt. Tower) . . .	868-9056

Confidential
Not For Publication

8. TECHNICAL SUPPORT CENTER ACTIVATION (* Station Manager or Alternates)

If the Station Manager cannot be reached, go to the next Superintendent down the list until one is contacted. Alternates for Superintendents are listed for information only.

* Station Manager

M. S. Tuckman, Home 882-8522
Pager 830

* Superintendent of Technical Services

J. M. Davis, Home 647-9721

Alternates for Superintendent of Technical Services

R. A. Knoerr, Home 882-6428
J. J. Sevic, Home 882-1588
R. T. Bond, Home 654-3654
C. L. Harlin, Home 654-7904

* Superintendent of Maintenance

T. B. Owen, Home 882-1499

Alternates for Superintendent of Maintenance

M. D. Clardy, Home 882-6637
D. E. Havice, Home 878-4940
D. M. Thompson, Home 261-8884
B. K. Millsaps, Home 868-2814

Confidential
Not For Publication

* Superintendent of Operations

R. L. Sweigart, Home 654-1956

Alternates for Superintendent of Operations

H. R. Lowery, Home 868-2551

G. A. Ridgeway, Home 847-9709

J. T. Campbell, Home 847-7953

N. F. Edwards, Home 638-6939

T. Coutu, Home 654-7697

J. N. Pope, Home 882-3866

* Operations Duty Engineer Duty Roster

* Superintendent in Training

T. S. Barr, Home 261-8368

Superintendent of Integrated Scheduling
(Operational Support Center Coordinator)

L. V. Wilkie, Home 638-6250

Alternate for Superintendent of Integrated Scheduling

Jeff S. Forbes, Home 868-2197

B. V. Earnhardt, Home 944-0681

Graham Davenport, Home 226-9773

Superintendent of Station Services

J. T. McIntosh, Home 654-6293

Alternate for Superintendent of Station Services

D. G. Austin, Home 878-2331

D. B. DuBose, Home 882-5115

T. K. McQuarrie, Home 638-2644

Confidential
Not For Publication

CRISIS MANAGEMENT CENTER

Recovery Managers

G. E. Vaughn, Office	8-373-2542
Home	(704)394-1092
M. D. McIntosh, Office	8-373-5941
Home	(704)364-8500
Lake	(704)483-1314
J. W. Hampton, Office.	8-831-2300
Home	(803)366-5300
T. L. McConnell, Office	8-875-4212
Home	(704)483-3881

9. WATER DEPARTMENTS

Should releases of radioactive effluent into Lake Keowee or Lake Hartwell potentially affect municipal water intakes or exceed technical specifications. Contact the appropriate authorities as indicated below:

Lake Keowee Releases

Seneca, H. J. Balding, Office	882-8359
After hours, weekends, holidays	882-3388
Greenville Water System (24 hours)	242-6510

Lake Hartwell Releases

City of Clemson

Mayor of Clemson, Office	653-2030
Home	654-3382

(If the mayor cannot be reached, call one of the following)

Clemson Administrator's Office	653-2030
Home	654-6263

Clemson Filter Plant (0700-1600)	653-2046
--	----------

Clemson University

President's Office	656-3413
Home	656-2340

Security - Police (24 hours)	656-2222
(If the President cannot be reached, call Clemson University Physical Plant (0800-1630)).	656-2186

<u>Anderson Water Works</u> (24 Hr. Number)	226-9676
---	----------

Confidential
Not For Publication

10. LAW ENFORCEMENT SUPPORT AGENCIES (24-hour numbers)

S. C. Highway Patrol (Greenville, S.C.)	235-7471
S. C. Enforcement Division (Columbia, S.C.)	737-9000
FBI (Columbia, S.C.)	254-3011

11. BOMB DISPOSAL

Explosives Ordinance Disposal Detachment Control (24-hour) (Fort Jackson, Columbia, S.C.)	751-5126
--	----------

12. RADIATION AND CONTAMINATION

REACTS, Department of Energy (Oak Ridge, Tennessee) . . .	615-481-1000
(24 hr. number - after 1700 ask for Pager number) . . .	241
DOE Emergency Radiological Monitoring Team (Aiken, S.C.) . .	725-3333 (24 hrs.)
DHEC, Bureau of Radiological Health (0830-1700)	734-4700
After hours, weekends, holidays	734-5424
Telecopier	799-6726

13. INGESTION PATHWAY

State of N.C. Warning Point

Primary - North Carolina Highway Patrol	919-733-3861
Alternate - N.C. Division of Emergency Management	919-733-3867

State of Georgia Warning Point

Primary - Georgia Emergency Management Agency	404-656-5500
Alternate	404-656-6401
Alternate - Georgia Dept. of Natural Resources	404-656-4300

Confidential
Not For Publication

14. NUCLEAR REGULATORY COMMISSION

NRC Operations Center	301-951-0550
	301-427-4056
	301-427-4259
	301-492-8893
US NRC, Region II	404-331-4503
US NRC, Region II (Operations Center)	404-331-5238
US NRC, Oconee Resident Inspectors	882-5363
	Ext. 2108
	882-6927
	882-6928
Jack Bryant (Home)	882-4527
Kent Sasser (Home)	882-1458

15. BUS TRANSPORTATION

Anderson Retail Office (24 hour number)	224-6363
(Contact Bill Faust, Pete Busby)	

16. NATIONAL WEATHER SERVICE - METEOROLOGICAL BACK-UP SOURCE

Greenville-Spartanburg Weather Service (24 hour) .	877-6998
--	----------

17. FEDERAL AERONAUTICS AGENCY

PRIVATE AIRCRAFT

Flight Standards District Office (0800-1630)	765-5931
After hours, weekends, holidays	1-800-922-5111

MILITARY AIRCRAFT

Air Space Mgr. (Shaw AF Base)	668-3250
Alternate	668-3083

Confidential
Not For Publication

SELECTIVE SIGNALING SYSTEM

TO OPERATE THE SYSTEM:

1. Pick up the receiver - you will not hear a dial tone.
2. Dial the number for the party you wish to speak to.
If you desire more than one party, dial each individual number to tie them in.

GROUP CALL: 41*

The purpose of the Group Call is to reach all three required agencies at the same time for notification of an emergency at the station. The Group Call will do the following:

NORMAL WORKING DAY: Will reach the following agencies:
(0830-1700)

1. Oconee County LEC
2. Oconee County EPD
3. Pickens County LEC
4. Pickens County EPD
5. SC Warning Point (SC Highway Dept.)

BACKSHIFT, HOLIDAYS, WEEKENDS:

1. Oconee County LEC
2. Pickens County LEC
3. SC Warning Point (SC Highway Dept.)

PROBLEM REPORTING:

Contact Communications - Wenwood Operations Center (0830-1700)	8-234-4172
After hours - Contact Division Operations Central	8-234-4089
	8-234-4090

INDIVIDUAL LISTING NUMBERS

- | | | |
|-----|--------------------------------------|-----|
| 1. | Oconee 1, 2 Control Room | 411 |
| 2. | Oconee 3 Control Room | 415 |
| 3. | Oconee TSC | 412 |
| 4. | Training Center - Offsite Rad Coord. | 414 |
| 5. | Oconee County - EPD | 417 |
| 6. | Oconee County - LEC | 416 |
| 7. | Pickens County - EPD | 419 |
| 8. | Pickens County - LEC | 410 |
| 9. | State FEOC - Clemson Armory | 418 |
| 10. | WFBC To activate 42* | 420 |
| | To deactivate | 42# |
| 11. | State Warning Point - Columbia | 516 |

Confidential
Not For Publication

OCONEE NUCLEAR STATION EMERGENCY RADIO

The call letters WQC699 identify the Emergency Radio frequency. The following is a listing of radio locations, unit call letters, and identifiers. Use identifiers to begin a transmission and the call letters to close out the radio transmission. (For example: Oconee Nuclear Station Control Room to Pickens County Law Enforcement Center. Close out with WQC699 off.)

ONS Base Station Remotes

<u>Location</u>	<u>Unit Call Letters</u>	<u>Identifier</u>
1. Unit 1&2 Control Room	WQC699	Oconee Control Room
2. Crisis Management Center	WQC699	Oconee CMC
3. Technical Support Center	WQC699	Oconee TSC

Coded Squelch Radios

<u>Location</u>	<u>Encode</u>	<u>Unit Call Letters</u>	<u>Identifier</u>
4. Pickens LEC	35	KNBZ-965	Pickens LEC
Pickens EOC	31	KNBE-487	Pickens EOC
Pickens EPD	31	KNBE-480	Pickens EPD
5. Oconee LEC	32	KNBE-488	Oconee LEC
6. State FEOC - (Clemson)	34	KA-82139	State FEOC

ALL ABOVE RADIOS MAY BE ACTIVATED BY ENCODING NO. 30

Field Monitoring Teams

<u>Location</u>	<u>Unit Call Letters</u>	<u>Identifier</u>
8. Field Monitor Coordinator	KA82139	Leader
9. Field Monitor Team	KA82139	Alpha
10. Field Monitor Team	KA82139	Bravo
11. Field Monitor Team	KA82139	Charlie
12. Field Monitor Team	KA82139	Delta
13. Field Monitor Team	KA82139	Echo
14. Field Monitor Team	KA82139	Foxtrot

TO COMMUNICATE BETWEEN BASE STATION REMOTES (1, 2, 3), THE INTERCOM MUST BE USED! The following procedure must be used:

1. Push INTERCOM button and hold
2. Push MIKE button and hold
3. Send message (example, CMC to TSC)
4. Release both buttons to receive a response.

Confidential
Not For Publication

OCONEE NUCLEAR STATION
CRISIS COMMUNICATIONS DIRECTORY

The crisis directory is intended for use should the Oconee Emergency Plan require implementation. Both station and corporate level telephone numbers are provided. The station's emergency organization will operate from the Technical Support Center near the Units 1 and 2 Control Room. The corporate emergency organization will operate from the Crisis Management Center located in the Visitors Center and Oconee Training Center.

EMERGENCY FACILITY LOCATIONS

Technical Support Center - Control Rooms 1 and 2

Operational Support Center - Control Room 3

Crisis Management Center - Oconee Training Center

Alternate Location: Liberty Retail Office

Crisis News Center - Keowee-Toxaway Visitors Center

Alternate Location: Liberty Retail Office

OCONEE NUCLEAR STATION
TELEPHONE DIRECTORY

Confidential
Not For Publication

Seneca Lines (803)	882-5363 882-5368 882-5369 882-5370 882-5371
Easley Lines (803)	859-0108 859-0113 859-0116
Anderson Line (803)	224-8376
Six Mile Line (803)	868-2717
Dial Code (Micro-Wave)	8 + 373 (Charlotte General Office) 8 + 831 (Catawba) 8 + 875 (McGuire) 9 Seneca 60 Easley 61 Anderson 63 Six Mile

Confidential
Not For Publication

OCONEE NUCLEAR STATION
CRISIS PHONE DIRECTORY
TECHNICAL SUPPORT CENTER

<u>POSITION/NAME</u>	<u>Telephone Number</u>	
	<u>Outside Line</u>	<u>Station Number</u>
		882-5363
<u>EMERGENCY COORDINATION</u>		
Emergency Coordinator	882-7076	2211
Offsite Communicator . . . (Selective Signaling)	412	2244
Corporate Communications		2728
<u>Superintendent of Operations</u>		2210
Unit 1 Control Room	2261,	2335
Unit 2 Control Room	2321,	2209
Unit 3 Control Room	2278,	2363
Shift Supervisor (Unit 1 & 2)		2271
(Unit 3)		2392
SSF Control Room		2766
<u>Superintendent of Technical Services</u>		2213
Data Transmissions Coordinator		2409
Compliance		2229
<u>Offsite Dose Assessment</u>		
Dose Assessment Coordinator		2138
Field Monitoring Coordinator		2103
Emergency Count Room (Visitors' Center) .	2763,	2764
Health Physics Status Assistant (HP Intercom)		2105
CMC Dedicated Line		2207
<u>Superintendent of Maintenance</u>		2227
<u>Superintendent of Station Services</u>		2212
Clerical Support		2233
Telecopier		2869
Medical Response		2111
NRC Resident Inspector	882-6927	2108

Confidential
Not For Publication

Telephone Number

	882-5363
<u>Outside</u>	<u>Station</u>
<u>Line</u>	<u>Number</u>

OPERATIONAL SUPPORT CENTER

(Support group consists of Health Physics, Chemistry, Maintenance, Safety, Operations)

Operational Support Center Coordinator	2804
Mechanical Maintenance Engineer	2223
Mechanical Maintenance Supervisor	2113
I & E Engineer	2219
I & E Supervisor	2189
Transmissions	2139
Health Physics Support	2190
Station Health Physicist.	2234
Dose Control	2178
S & C Coordinator	2519
Support Function Coordinator.	2179
Chemistry Support	
Station Chemist	2220
Chemistry Supervisor	2775
Chemistry Technicians	2365
Medical Support	2365
OSC Communicator	2387
Telecopier	2395
OSC Status Clerk	2387
Operations Liason	2214
Unit #3 Operations Offices	2277 2172
Nuclear Equipment Operators (Unit 1 & 2 Emergencies)	2333
Nuclear Equipment Operators (Unit 3 Emergencies)	2388
CMC Plant Assessment Group (W.C. Room 1704)	373-5177

Confidential
Not For Publication

OCONEE NUCLEAR STATION
CRISIS PHONE DIRECTORY
CRISIS MANAGEMENT CENTER

<u>POSITION/NAME</u>	<u>PRIVATE LINE</u>	<u>ONS SWITCHBOARD</u>
<u>RECOVERY MANAGER</u>		
State of S.C. (FEOC Line)	654-9367 or 654-9363	2713
(Duke Line)	882-9801	
<u>MANAGER'S AREA</u>		
Crisis News Director		2711
Emer. Comm. Manager		2712
		2729
Plant Assess. Manager		2714
Admin. and Log. Manager		2709
State Rep.		2701
NRC		2710
<u>RADIOLOGICAL ASSESSMENT</u>		
	882-8148	2702
		2703
S.C. Bureau of Radiological Health (Duke Line)	882-9598	
(FEOC Line)	654-9371	
<u>OFF-SITE DOSE ASSESSMENT</u>		
	882-9598	2705
		2706
		2715
		2716
<u>EMERGENCY COMMUNICATIONS.</u>		
	882-9028	2707
Selective Signaling		414 2708
<u>ADMINISTRATION AND LOGISTICS.</u>		
	882-8650	2726
		2727
<u>DATA COORDINATION</u>		
<u>TELECOPIER</u>		2718
		2719
		2700
<u>ADVISORY SUPPORT</u>		
<u>NUCLEAR REGULATORY COMMISSION</u>		2725
<u>BABCOCK & WILCOX (NSSS SUPPLIER)</u>		

OCONEE NUCLEAR STATION
CRISIS PHONE DIRECTORY
BACKUP CRISIS MANAGEMENT CENTER
LIBERTY RETAIL OFFICE, LIBERTY, S.C.

~~Confidential~~
Not For Publication
Confidential
Not For Publication

AREA CODE - 803
Telephone Number

RECOVERY MANAGER

843-2751
843-2752

PUBLIC INFORMATION OFFICERS*

843-9014
843-6935

State of South Carolina
Oconee County
Pickens County

PLANT ASSESSMENT

843-2701
843-2702
843-2703
843-2704

OFFSITE DOSE ASSESSMENT MANAGER

843-2705
843-2761

ADMINISTRATION AND LOGISTICS

843-2762
843-2763

CRISIS NEWS

843-2764
843-2765

GOVERNMENT AGENCIES*

843-2753
843-2754
843-2755

NRC
State of South Carolina
Oconee County
Pickens County

Liberty District Office lines which may be accessed by
CMC personnel during an emergency:

843-9266
843-9267
843-9964
843-0950

*NOTE: Call any one of the numbers listed to reach the desired representative.

OCONEE NUCLEAR STATION

CRISIS PHONE DIRECTORY

CRISIS NEWS CENTER

KEOWEE-TOXAWAY VISITORS' CENTER

Confidential
Not For Publication

<u>Position/Name</u>	<u>Private Line</u>	<u>Telephone Number</u>
		882-5363 ONS <u>Switchboard</u>
<u>CRISIS NEWS DIRECTOR</u>	882-0601	2430
Mary Cartwright	882-5620	2431
		2720
		2721
		2722
		2723
		2724
<u>COMMERCIAL NEWS MEDIA</u>	882-6514	
(Active Numbers)	882-6515	
For drill purposes only	882-6519	
	882-6520	
	882-6522	
<u>COMMERCIAL NEWS MEDIA</u>	882-6529	
(Inactive Numbers)	882-6530	
Activated only during an	882-6533	
actual emergency	882-6535	
	882-6536	
	882-6538	
	882-6540	
	882-6541	
	882-6543	
	882-6544	
<u>NRC/STATE/COUNTY PUBLIC</u>		
<u>INFORMATION OFFICERS (PIO'S)</u>		
NRC	882-8094*	
Oconee County	882-6744*	
Pickens County	882-5537*	
State of S.C. (FEOC Line)	654-9363 (State Armory)	
(Duke Line)	882-6746	
Telecopier for PIO	882-4505	

*Note: Oconee County or Pickens County may be reached on any one of these phones.

EMERGENCY OPERATION CENTER

Pickens County

Confidential
Not For Publication

Primary Number 878-7808

EXECUTIVE GROUP*

Emergency Preparedness Director 878-7527
County Administrator 878-7838
County Council

OPERATIONS GROUP*

Law Enforcement 878-7494
Emergency Medical Service
Rescue 878-2577
Mental Health
Medical Service
Fire 878-7409
Public Works

ASSESSMENT*

Red Cross 855-1020
Emergency Welfare Service
Transportation 868-9207
Salvation Army
Supply and Procurement 878-7499
Damage Assessment
Public Information 878-7541
RADEF

COMMUNICATIONS

878-7808

PUBLIC INFORMATION OFFICER

CRISIS NEWS CENTER-ONS*

State of South Carolina 882-8094
Oconee County 882-4505
Pickens County 882-5537
NRC 882-6744

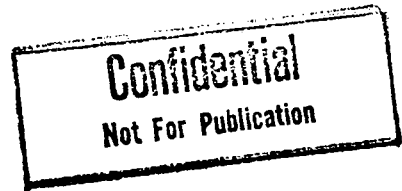
CRISIS NEWS CENTER-LIBERTY RETAIL OFFICE*

State of South Carolina 843-2753
Oconee County 843-2754
Pickens County 843-2755
NRC

*Call any one of the listed numbers to reach group desired.

EMERGENCY OPERATION CENTER

Oconee County



Primary Number (24-hour) 638-3097

NOTE*: Numbers listed below are only activated during emergency operations.

OPERATIONS*

Fire Protection	638-2633
Police	638-2864
	638-3002
Public Roads	
Emergency Medical Services	
Rescue Squads	

ASSESSMENT*

Emergency Welfare Services	638-2177
	638-2482
Radiological Defense	
Damage Assessment	

EXECUTIVE GROUP*

Supervisor/Chairman County Council	638-2540
EOC Director	
Financial Officer	
FNF Representative	

PUBLIC INFORMATION OFFICER

CRISIS NEWS CENTER-ONS

State of South Carolina	882-8094
Oconee County	882-4505
Pickens County	882-5537
NRC	882-6744

CRISIS NEWS CENTER LIBERTY RETAIL OFFICE

State of South Carolina	843-2753
Oconee County	843-2754
Pickens County	843-2755
NRC	

*Call any one of the listed numbers to reach group desired.

CONTROL COPY

DUKE POWER COMPANY
PROCEDURE PROCESS RECORD
INFORMATION ONLY

(1) ID No. RP/O/B/1000/06

Change(s) 0 to

0 Incorporated

PREPARATION

(2) STATION Oconee

(3) PROCEDURE TITLE Protective Action Recommendations

(4) PREPARED BY William C. Griggs DATE 8/25/86

(5) REVIEWED BY David ... DATE 8/27/86

Cross-Disciplinary Review By _____ N/R CM 08/28/86

(6) TEMPORARY APPROVAL (If Necessary)

By _____ (SRO) Date _____

By _____ Date _____

(7) APPROVED BY Joe M. Davis DATE 8/29/86

(8) MISCELLANEOUS

Reviewed/Approved By Craig L. ... Date 8/29/86

Reviewed/Approved By _____ Date _____

COMPLETION

(9) DATE(S) PERFORMED _____

(10) PROCEDURE COMPLETION VERIFICATION

- Yes N/A Check lists and/or blanks properly initialed, signed, dated or filled in N/A or N/R, as appropriate?
- Yes N/A Listed enclosures attached?
- Yes N/A Data sheets attached, completed, dated and signed?
- Yes N/A Charts, graphs, etc. attached and properly dated, identified and marked?
- Yes N/A Acceptance criteria met?

VERIFIED BY _____ DATE _____

(11) PROCEDURE COMPLETION APPROVED _____ DATE _____

(12) REMARKS

DUKE POWER COMPANY
OCONEE NUCLEAR STATION
PROTECTIVE ACTION RECOMMENDATIONS

1.0 SYMPTOMS

- 1.1 Radioactive releases (or potential for release) that produce projected doses in excess of the limits of Enclosure 4.2 requires protective action recommendations.

2.0 IMMEDIATE ACTIONS

- 2.1 Refer to Enclosure 4.1 to determine the protective action recommendations.
- 2.2 Request actual dose projections and re-evaluate recommendations to counties and state using offsite monitoring measurements (if available) current meteorology, and core/reactor coolant system/containment status.

3.0 SUBSEQUENT ACTIONS

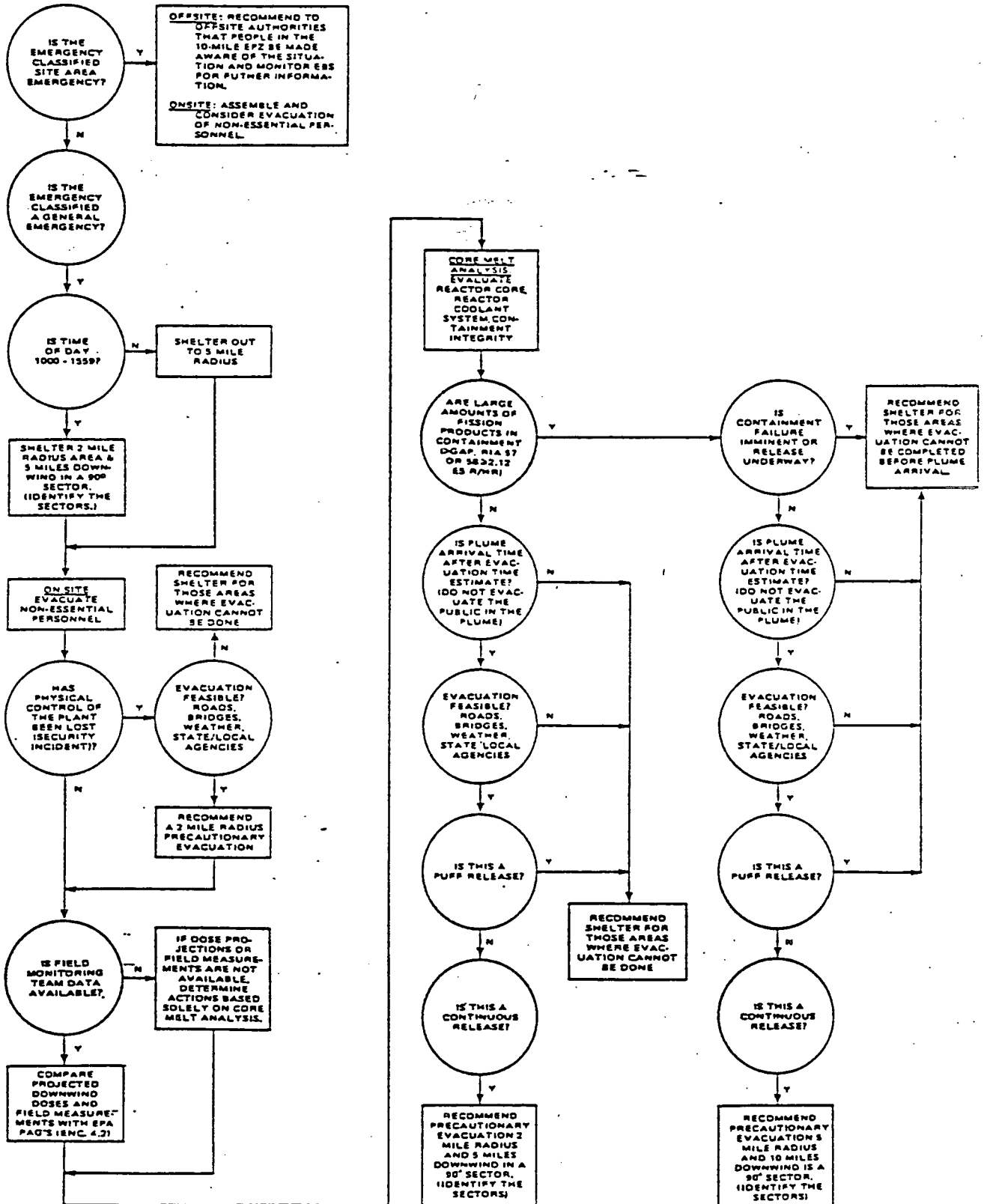
NOTE: COUNTY AND/OR STATE EMERGENCY OPERATIONS CENTER FACILITIES MAY OR MAY NOT BE ESTABLISHED AND THE GENERAL OFFICE EMERGENCY RESPONSE ORGANIZATION HAS NOT BEEN ACTIVATED.

- 3.1 Consider the following in conjunction with determining the final protective action recommendations to be made:
- 3.1.1 Sheltering for the population in the plume exposure EPZ not evacuated.
- 3.1.2 For any sheltering decision, consider evacuation of the population affected by ground contamination after the plume passes.
- 3.2 Contact Oconee County and Pickens County Emergency Preparedness agencies to update them of any revised recommendations. Notify the State of South Carolina warning point of the recommended action.
- 3.3 Determine evacuation status, as appropriate, by requesting follow-up information from the offsite agencies. (Enclosure 4.3)

4.0 ENCLOSURES

- 4.1 Protective Action Guide Flowchart
- 4.2 Protective Action Guide
- 4.3 Evacuation Status Report

PROTECTIVE ACTION GUIDE FLOWCHART



DUKE POWER COMPANY
 OCONEE NUCLEAR STATION
PROTECTIVE ACTION GUIDES

RP/0/00/06
 Enclosure 4.2

Projected Dose (Rem) to the Population	Recommended Actions (a)	Comments
Whole Body <1 Thyroid <5	No protective action required. State may issue an advisory to seek shelter and await further instructions or to voluntarily evacuate. Monitor environmental radiation levels.	Previsously recommended protective actions may be reconsidered or terminated.
Whole Body 1 to <5 Thyroid 5 to <25	Seek shelter and wait further instructions. Consider evacuation particularly for children and pregnant women. Monitor environmental radiation levels. Control access.	
Whole Body 5 and above Thyroid 25 and above	Conduct mandatory evacuation of populations in the predetermined area. Monitor environmental radiation levels and adjust area for mandatory evacuation based on these levels. Control access.	Seeking shelter would be an alternative if evacuation were not immediately possible.

Projected Dose (Rem) to
 Emergency Team Workers

- VOLUNTARY BASIS -
 (PLANNED EMERGENCY EXPOSURE BEYOND 10 CFR 20 LIMITS)

Whole Body 5-25* Skin of whole body 30-125* Thyroid 125* Extremities 75	Control exposure of emergency team members to these levels except for lifesaving missions. (Appropriate controls for emergency workers, include time limitations, respirators, and stable iodine.)	Respirators and stable iodine should be used where effective for emergency team workers.
Whole body 25-75* Thyroid 150 Skin of whole body 150 Extremities 375	Control exposure of emergency team members performing lifesaving missions to this level. (Control of time of exposure will be most effective.)	

(a) These actions are recommended for planning purposes. Protective action decisions at the time of the incident must take existing conditions into consideration.

*NOTE: Dose up to this limit must be authorized by the Emergency Coordinator.

EVACUATION STATUS SHEET

Date: _____

Evacuation Recommendations by State of S.C.

- _____ (b) People living in zones _____ remain indoors with the doors and windows closed, turn off air conditioners and other ventilation, monitor EBS stations.
- _____ (c) People living in zones _____ evacuate their homes and businesses and go to a designated shelter.
- _____ (d) Pregnant women and children in zones _____ remain indoors with the doors and windows closed, turn off air conditioners and other ventilation, and monitor EBS stations.
- _____ (e) Pregnant women and children in zones _____ evacuate and go to a designated shelter.
- _____ (f) Other recommendations: _____

POPULATION DENSITIES EVACUATION TIMES				
SECTOR	PERMANENT POPULATION	TRANSIENT POPULATION	EVACUATION TIME NORMAL CONDITIONS	EVACUATION TIME ADVERSE CONDITIONS
A-0 WITHIN 2 MILES	307	3,195	3:25	3:25
A-1	417	1,354	3:25	3:25
A-2	1,631	2,189	3:25	3:25
B-1	1,698	--	3:25	3:25
B-2	3,614	--	3:25	4:00
C-1	338	501	3:25	3:25
C-2	18,858	2,487	3:25	4:15
D-1	209	1,181	3:25	3:25
D-2	15,602	4,064	3:45	5:30
E-1	709	1,133	3:25	3:25
E-2	8,897	1,373	3:30	5:00
F-1	297	1,229	3:25	3:25
F-2	2,804	1,535	3:25	3:25
TOTAL	55,363	20,241	3:45	5:30
ALL SECTORS				

- 1. _____ Evacuation Begun

 DATE TIME
- 2. _____ Evacuation Complete

 DATE TIME
- 3. _____ Evacuation Verified

 DATE TIME