



UNITED STATES
NUCLEAR REGULATORY COMMISSION

WASHINGTON, D. C. 20555

February 2, 1990

Dockets Nos. 50-269, 50-270, 50-287
50-369, 50-370, 50-413, 50-414

FACILITY: Oconee Nuclear Station, Units 1, 2 and 3;
McGuire Nuclear Station, Units 1 and 2; and
Catawba Nuclear Station, Units 1 and 2

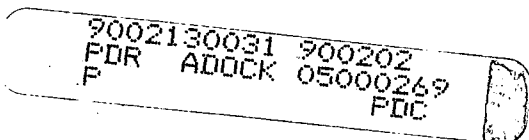
LICENSEE: Duke Power Company

SUBJECT: SUMMARY OF JANUARY 16-17, 1990, INTERFACE MEETING
WITH DUKE POWER COMPANY

On January 16 and 17, 1990, the NRC staff met at the Oconee Nuclear Station with representatives of the Duke Power Company (Duke) to discuss licensing and regulatory issues. This meeting was part of a continuing series of meetings held on a bimonthly basis. Representatives from the Duke corporate office, the three Duke nuclear stations, NRC Region II, NRC Resident Inspection staff and NRR participated in the meeting. An agenda of the meeting is included as Enclosure 1.

After opening remarks, Duke made a presentation on Fitness for Duty Programs recently implemented at each of the Duke nuclear stations and the Duke corporate office. The NRC followed with a discussion of the specific requirements of the Fitness for Duty rule on licensed operators and a discussion of the NRC licensing process for degraded plant conditions, both for situations covered by technical specifications and cases outside of technical specifications. The Oconee station manager then made a brief presentation on the status of the Oconee nuclear station. The first day's meeting concluded with an agreement to reduce the frequency of these interface meetings to three times annually, once at each Duke station.

On January 17, 1990, the meeting reconvened with brief discussions of various topics of interest to Duke. These included the status of implementation of a new source term, particularly as it affects the ventilation system. Duke requested that this topic be covered at the next interface meeting. There was also a discussion on when the licensee could utilize the provisions of 10 CFR 50.59 for making changes to the plant, and a discussion of the impact of Generic Letter 89-10, concerning testing of motor operated valves, on the operability of systems. Duke will submit a letter to the NRC describing their concerns of this last issue. The meeting concluded with the participants



D. Fol
11
memo

Duke Power Company

Catawba Nuclear Station
McGuire Nuclear Station
Oconee Nuclear Station

cc:

A.V. Carr, Esq.
Duke Power Company
422 South Church Street
Charlotte, North Carolina 28242

J. Michael McGarry, III, Esq.
Bishop, Cook, Purcell and Reynolds
1400 L Street, N.W.
Washington, D. C. 20005

North Carolina MPA-1
Suite 600
3100 Smoketree Ct.
P.O. Box 29513
Raleigh, North Carolina 27626-0513

Ms. S. S. Kilborn
Area Manager, Mid-South Area
ESSD Projects
Westinghouse Electric Corp.
MNC West Tower - Bay 239
P.O. Box 355
Pittsburgh, Pennsylvania 15230

County Manager of York County
York County Courthouse
York, South Carolina 29745

Richard P. Wilson, Esq.
Assistant Attorney General
S.C. Attorney General's Office
P.O. Box 11549
Columbia, South Carolina 29211

Piedmont Municipal Power Agency
100 Memorial Drive
Greer, South Carolina 29651

Mr. Alan R. Herdt, Chief
Project Branch #3
U.S. Nuclear Regulatory Commission
101 Marietta Street, NW, Suite 2900
Atlanta, Georgia 30323

North Carolina Electric Membership
Corp.
3400 Sumner Boulevard
P.O. Box 27306
Raleigh, North Carolina 27611

Saluda River Electric Cooperative,
Inc.
P.O. Box 929
Laurens, South Carolina 29360

Senior Resident Inspector
Route 2, Box 179N
York, South Carolina 29745

Regional Administrator, Region II
U.S. Nuclear Regulatory Commission
101 Marietta Street, NW, Suite 2900
Atlanta, Georgia 30323

Mr. Heyward G. Shealy, Chief
Bureau of Radiological Health
South Carolina Department of Health
and Environmental Control
2600 Bull Street
Columbia, South Carolina 29201

Ms. Karen E. Long
Assistant Attorney General
N.C. Department of Justice
P.O. Box 629
Raleigh, North Carolina 27602

Mr. Robert G. Morgan
Nuclear Production Department
Duke Power Company
P.O. Box 33189
Charlotte, North Carolina 28241

cc:

Dr. John M. Barry
Department of Environmental Health
Mecklenburg County
1200 Blythe Boulevard
Charlotte, North Carolina 28203

County Manager of Mecklenburg County
720 East Fourth Street
Charlotte, North Carolina 28202

Mr. J. S. Warren
Duke Power Company
Nuclear Production Department
P. O. Box 33189
Charlotte, North Carolina 28242

Senior Resident Inspector
c/o U.S. Nuclear Regulatory Commission
Route 4, Box 529
Huntersville, North Carolina 28078

Senior Resident Inspector
U.S. Nuclear Regulatory Commission
Route 2, Box 610
Seneca, South Carolina 29678

Mr. Dayne H. Brown, Director
Department of Environmental,
Health and Natural Resources
Division of Radiation Protection
P.O. Box 27687
Raleigh, North Carolina 27611-7687

Mr. Robert B. Borsum
Babcock & Wilcox
Nuclear Power Division
Suite 525
1700 Rockville Pike
Rockville, Maryland 20852

Manager, LIS
NUS Corporation
2536 Countryside Boulevard
Clearwater, Florida 34623-1693

Office of Intergovernmental Relations
116 West Jones Street
Raleigh, North Carolina 27603

Honorable James M. Phinney
County Supervisor of Oconee County
Walhalla, South Carolina 29621

Mr. Paul Guill
Duke Power Company
P.O. Box 33189
422 South Church Street
Charlotte, North Carolina 28242

Mr. H. B. Tucker, Vice President
Nuclear Production Department
Duke Power Company
422 South Church Street
Charlotte, North Carolina 28242

breaking into three groups to discuss plant-specific issues relating to Oconee, McGuire and Catawba.

Meeting participants are listed in Enclosure 2. Handouts used during the presentations are provided in Enclosure 3.

/s/

L. A. Wiens, Project Manager
Project Directorate II-3
Division of Reactor Projects I/II
Office of Nuclear Reactor Regulation

Enclosures:
As stated

cc w/enclosures:
See next page

DISTRIBUTION:

Facility: Oconee Nuclear Station, Units 1, 2 and 3;
McGuire Nuclear Station, Units 1 and 2; and
Catawba Nuclear Station, Units 1 and 2

Docket File

NRC PDR	
Local PDR	
PDII-3 Reading	
T. Murley	12-G-18
J. Sniezek	12-G-18
S. Varga	14-E-4
D. Matthews	14-H-25
R. Ingram	14-H-25
L. Wiens	14-H-25
OGC	15-B-18
E. Jordan	MNBB-3302
B. Grimes	9-A-2
NRC Participants	
ACRS (10)	P-315
B. Borchardt	17-D-19

*Copies sent persons on facility service list

mi
1/31/90

OFC	: PDII-3	: PDII-3	:	:	:	:
NAME	: LWiens	: DMatthews	:	:	:	:
DATE	: 1/1/90	: 1/1/90	:	:	:	:

DUKE/NRC
INTERFACE MEETING

Oconee Nuclear Station
World of Energy

AGENDA

January 16, 1990

1:00 PM	Opening Remarks	
1:15 PM	Duke Fitness For Duty Program	Sue Murdock
2:15 PM	Miscellaneous Items -	Robert Sharpe
	o McGuire Ventilation System Modification	
	o Approvals Outside 50.59/50.90	Bob Gill
	o Longstanding Issue Resolution Process (Draft)	Bob Gill
	o GL 89-10 and Operability	Bob Gill
2:30 PM	NRC -	
	o Licensing Process	Dave Matthews
	o FFD and Licensed Operator	Len Wiens
3:30 PM	Break	
3:45 PM	Oconee Nuclear Station	Brew Barron
4:30 PM	Adjourn	

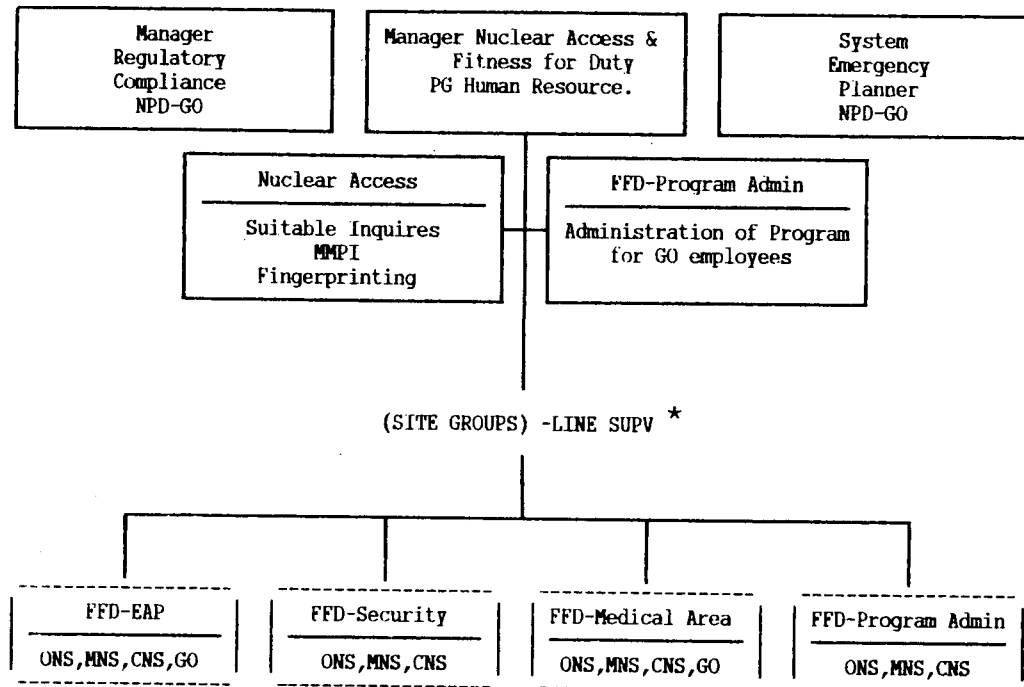
January 17, 1990

8:00 AM - 10:00 AM	Breakout Sessions	
-----------------------	-------------------	--

Station _____ Unit _____ Rev. _____ File No. _____ Sheet _____ Of _____
 Subject _____
 _____ By _____ Date _____
 Prob No. _____ Checked By _____ Date _____

DUKE / NRC Interface Meeting Attendance 1/16/90

<u>name</u>	<u>organization</u>
T. D. Curtis	Duke, Oconee Compliance
R. M. Glover	Duke, Catawba Compliance
C. L. HARTZELL	DUKE, CATAWBA COMPLIANCE
Paul Guill	Duke, Reg. Compl., GO
J. S. WARREN	Duke, Reg Compl., GO
K. N. JABBOUR	NRC, Catawba Project Mgr.
L. A. WYENS	NRC, Oconee Proj. Mgr.
Daryl Hoel	NRC, MCGUIRE PROJ MGR
AR HERDT	NRC, RIA CHIEF PROTECTS BRANCH
DAVID B. MATTHEWS	NRC, RIA DIRECTOR, PDI-3 NRC
William J. OEDERS	NRC, SENIOR RESIDENT ENR
Bob Futrell	Duke, Nuclear Safety Assurances, GO
Bob Gill	Duke, Regulatory Compliance, GO
JOE M. DAVIS	DUKE, ONS, TECH. SERVICES SUPT.
Gary E. Rothemburger	Duke, ONS, Int Sch Supt
PIERCE H. SKINNER	NRC, SRI Oconee Nuclear Station
P. Kim Van Doren	NRC, SRI McGuire
T. A. Cooper	NRC, RI, McGuire
S. Q. NINH	NRC, RI, McGuire
Gene Dukes, M.P.	Duke, Corporate Medical Director
HAL B. TUCKER	DUKE, VP NUCLEAR PROD.
HR Bacon	DUKE, OCONEE
RG MORGAN	DUKE / REG. COMPLIANCE / GO - ONS
BRYAN J. DOLAN	DUKE, OCONEE DESIGN SITE OFFICE
Peter R. Aeynan	Duke, Design Eng., McGuire Eng. Div.
ROBERT O. SHARPE	DUKE, MCGUIRE COMPLIANCE
Sue J. Murdock	Duke, Power Group / Human Resources



*All of the site groups report directly to the line supervision at the nuclear facility; however, direction on the administration of the FFD Program is received through the G.O. Manager, Nuclear Access and Fitness for Duty.

DUKE POWER COMPANY
PERSONNEL INVOLVED WITH
FITNESS-FOR-DUTY NRC 10CFR PART 26

CORPORATE LEVEL

POWER GROUP-HUMAN RESOURCES

S. P. Murdock - Manager, Nuclear Access and Fitness-for-Duty
I. R. Crawford - Program Administrator-GO

NUCLEAR PRODUCTION

R. L. Gill, Jr. - Technical Systems Manager

MEDICAL

W. E. Dukes - Medical Review Officer
J. P. Alexander - Medical Review Officer
G. L. Johnston - Manager, Health & Safety Services &
Administration
L. H. Hart - Occupational Health Nurse
M. J. Joseph - Occupational Health Nurse

EMPLOYEE ASSISTANCE PROGRAM

J. C. Coulter - Manager, Employee Assistance Program
E. B. Martin - Employee Assistance Counselor
G. W. Crawford - Employee Assistance Counselor
E. D. Young - Employee Assistance Counselor
L. F. Bost - Employee Assistance Counselor

STATION LEVEL

CATAWBA NUCLEAR STATION

J. S. Williams - Program Administrator
J. H. Roach - Security & Support Services Coordinator
B. J. Fagan - Nurse Supervisor
S. R. Mode - Safety & Health Services Manager
M. S. Glover - Compliance Manager
C. A. Mitchell - Employee Assistance Counselor

MCGUIRE NUCLEAR STATION

J. B. McClure - Program Administrator
T. W. Keener - Security & Support Services Coordinator
J. M. Alexander - Nurse Supervisor
D. C. Mobley - Safety & Health Services Manager
R. O. Sharpe - Compliance Manager
E. S. Jenkins - Employee Assistance Counselor

OCONEE NUCLEAR STATION

E. M. Rodgers - Program Administrator
T. K. McQuarrie - Security & Support Services Coordinator
P. S. Rice - Nurse Supervisor
T. W. King - Safety & Health Services Manager
T. D. Curtis - Compliance Manager
O. M. O'Grady - Employee Assistance Counselor

01/15/90

DISTRIBUTION LIST FOR
BLUE PROCEDURES BOOK
"KEY PLAYERS"

PROGRAM ADMINISTRATORS

Jill Williams
Kaye Palmer
Jackie Davis

Iris Crawford
Stephanie Pastor

Marlene Rodgers

Joyce McClure
Joe Bates
Nancy Bost

EMPLOYEE RELATIONS SUPERVISORS

Jean Lanning
Joe Lentz
Winston Kelley

STATION COMPLIANCE

Robert Sharpe
Tom Curtis
Mike Glover

NURSES

Jay House
Barbara Fagan
Jo Alexander
Laura Hart
Pat Rice

EAP

Joe Coulter
E. B. Martin
Sunny McLaughlin
Dianne Flowe
Bill Crawford
John Dent
Lew Bost
Mike O'Grady
Eddie Young
Charles Mitchell
Elaine Jenkins

HEALTH & SAFETY MANAGERS

Gary Johnston
Dave Mobley
Susan Mode
Terry King

SECURITY

Jim Roach
Terry Keener
Tom McQuarrie

OTHERS

Sue Murdock
Paul Evans
Neal Alexander
Gene Dukes
Sylvia Maye

CORPORATE COMPLIANCE

Bob Gill
Tommy Byers
Randy Cross
Ron Eller

01/15/90

CONTENTS

<u>TAB</u>		<u>REV #</u>	<u>REV DATE</u>
A.	Medical Procedures		
	◆ Urine Drug Screen Testing	Rev. 1	01/02/90
	◆ Alcohol Breath Analysis Testing	Rev. 0	12/15/89
	◆ Processing Split Urine Specimens for Appeals	Rev. 0	12/15/89
	◆ Intoximeter 3000 Calibration Check	Rev. 1	12/29/89
	◆ Log Book Entry Procedure	Rev. 0	12/12/89
	◆ Appendix A	Rev. 0	12/15/89
B.	Random Drug and Alcohol Testing	Rev. 0	12/18/89
C.	Fitness For Duty Reporting Requirements	Rev. 1	12/14/89