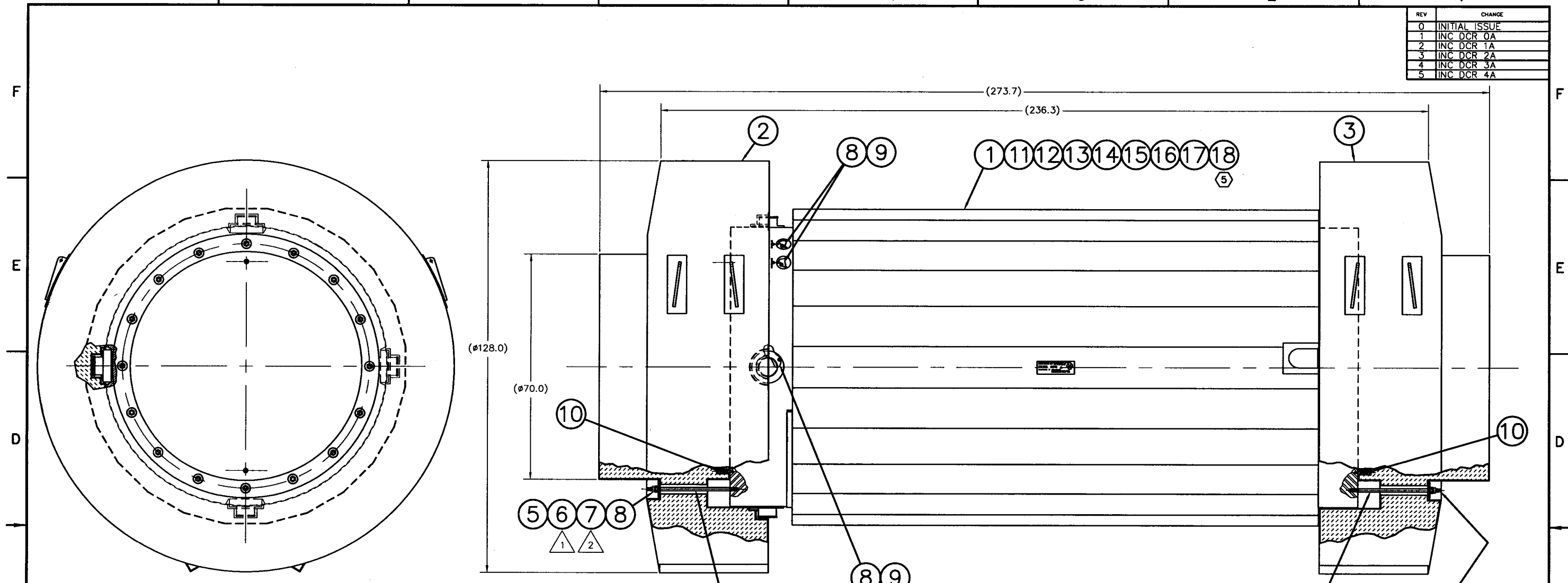


REV	CHANGE
0	INITIAL ISSUE
1	INC DCR 0A
2	INC DCR 1A
3	INC DCR 2A
4	INC DCR 3A
5	INC DCR 4A



NOTE: Regulatory Approval Pending

- 99 TRANSPORT ASSEMBLY-STC
- 98 TRANSPORT ASSEMBLY-YANKEE-GTCC
- 97 TRANSPORT ASSEMBLY-YANKEE-PWR
- 96 TRANSPORT ASSEMBLY-CY-24
- 95 TRANSPORT ASSEMBLY-CY-26
- 94 TRANSPORT ASSEMBLY-CY-GTCC
- 93 TRANSPORT ASSEMBLY-MPC-LACBWR
- 92 TRANSPORT ASSEMBLY-MPC-WVDP
- 91 TRANSPORT ASSEMBLY-STC HBU

2 TORQUE TO 75±5 FT-LBS DOUBLE TWIST SAFETY WIRE RODS IN GROUPS OF TWO.

1 TORQUE TO 35±FT-LBS.

NOTES:

QTY	UNIT	DESCRIPTION	MATERIAL	SPEC	DRAWING No.	DESCRIPTION
1		18 CASK ASSEMBLY-STC HBU			423-800-97	
1		17 TRANSPORT CASK ASSEMBLY, MPC-WVDP			630087-501-99	
1		16 TRANSPORT CASK ASSEMBLY, MPC-LACBWR			630045-800-99	
1		15 CASK ASSEMBLY-CY-GTCC			414-801-97	
1		14 CASK ASSEMBLY-CY-26			414-801-99	
1		13 CASK ASSEMBLY-CY-24			414-801-98	
1		12 CASK ASSEMBLY-YANKEE-PWR			455-800-99	
1		11 CASK ASSEMBLY-YANKEE-GTCC			455-800-98	
4		10 GUIDE PIN			423-811-8	
AR	AR	9 SECURITY SEAL		1.0 DIA CUP SEAL		AMERICAN CASTING COMPANY
AR	AR	8 SEAL WIRE	304 ST. STL.	1/32 DIA		AMERICAN CASTING COMPANY
32	32	7 JAM NUT	304 ST. STL.	ASTM A194 GRADE 8		1-8 UNC-2B HEAVY HEX
32	32	6 NUT	304 ST. STL.	ASTM A194 GRADE 8		1-8 UNC-2B HEAVY HEX
32	32	5 WASHER			423-859-2	
32	32	4 RETAINING ROD			423-859-1	
1	1	3 Balsa IMPACT LIMITER (LOWER)			423-258	
1	1	2 Balsa IMPACT LIMITER (UPPER)			423-257	
1	1	1 CASK ASSEMBLY-STC			423-800-99	

NAC INTERNATIONAL

TRANSPORT ASSEMBLY, Balsa IMPACT LIMITERS, NAC-STC

GROUP	NAME	DATE
PREPARED	<i>[Signature]</i>	11-18-13
CHECKED	<i>[Signature]</i>	11-18-13
PROJECT MANAGER	<i>[Signature]</i>	11-18-13
ENGINEERING	<i>[Signature]</i>	11-18-13
LOCKING	<i>[Signature]</i>	11/19/13
QUALITY	<i>[Signature]</i>	11/19/13

UNLESS OTHERWISE STATED DIMENSIONING AND TOLERANCING SHALL BE PER ASME Y14.5M-04

ALL THREAD DEPTH CALLOUTS ARE TO BE CONSIDERED AS A MIN. DEPTH OF PERFECT THREADS.

ALL DIMENSIONS ARE IN INCHES

MACHINED SURFACES TO BE \pm OR BETTER

NEXT ASSEMBLY: N/A

DRAWING TYPE: LICENSE

PROJECT 423

DRAWING 843

REV 5

SH 1 OF 1

9:17AM 11-18-2013