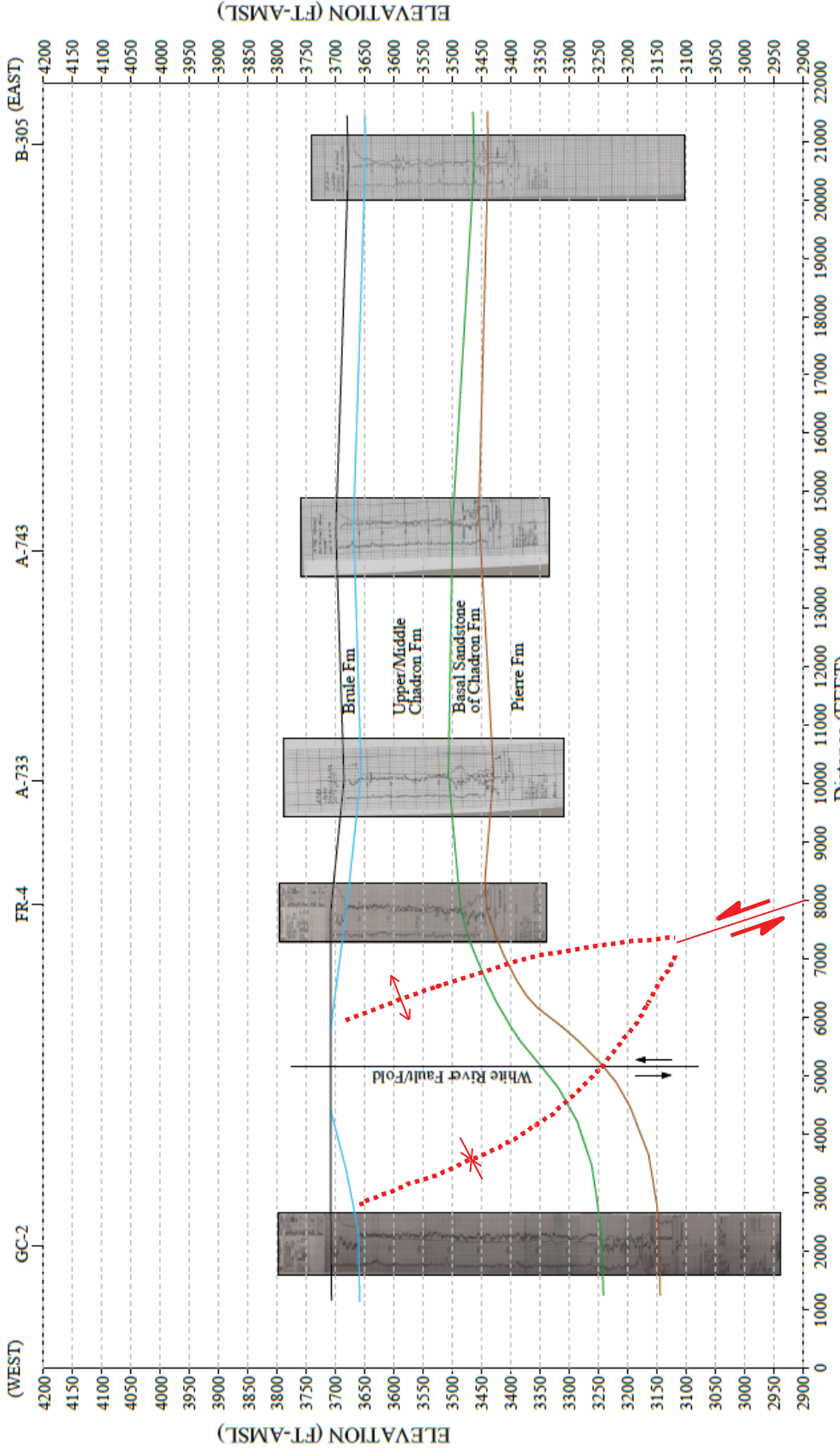
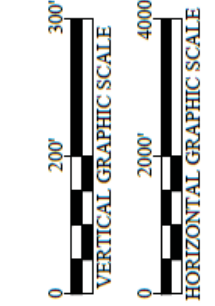


FIGURE 2.6-4 Cross Section 512,000 E-W



REV. DATE	CAMECO RESOURCES
REV. 1 8/2/12	CROW BUTTE OPERATION
	Dawes County, Nebraska
	CROSS-SECTION 512,000 E-W
	<b>FIGURE 2.6-4</b>
	Prepared by: CBO
	Drawn by: Wade Beins



- Legend:
- Topographic Surface
  - Top of Upper Chadron Formation
  - Top of Basal Sandstone of Chadron Formation
  - Top of Pierre Formation

- Syncline
- Anticline

United States Nuclear Regulatory Commission Official Hearing Exhibit  
 In the Matter of: CROW BUTTE RESOURCES, INC.  
 (License Renewal for the In Situ Leach Facility, Crawford, Nebraska)

ASLBP #: 08-867-02-OLA-BD01  
 Docket #: 04008943  
 Exhibit #: CBR-026-00-BD01  
 Admitted: 8/18/2015  
 Rejected: 8/18/2015  
 Other:

Identified: 8/18/2015  
 Withdrawn:  
 Stricken: