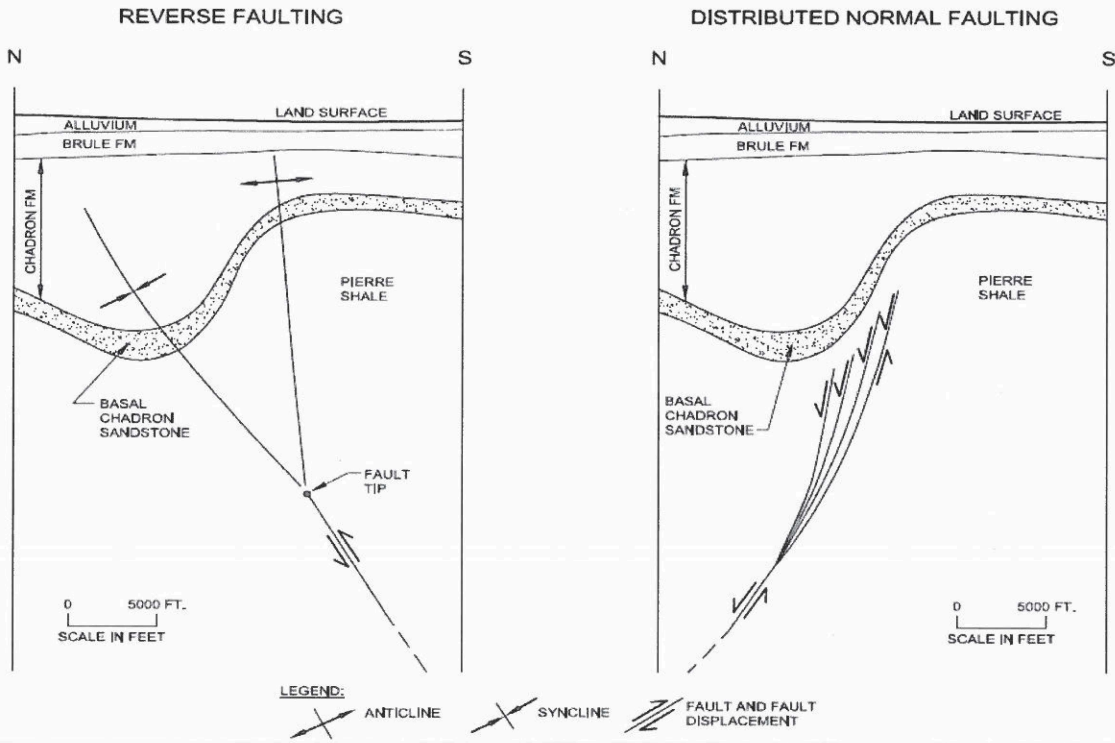


Figure F.4-1a. Generalized Schematic Diagram of Potential Fault Kinematics Responsible for the White River Fault-Cored Structure



United States Nuclear Regulatory Commission Official Hearing Exhibit
 In the Matter of: CROW BUTTE RESOURCES, INC.
 (License Renewal for the In Situ Leach Facility, Crawford, Nebraska)
 ASLBP #: 08-867-02-OLA-BD01
 Docket #: 04008943
 Exhibit #: CBR-025-00-BD01
 Admitted: 8/18/2015
 Rejected:
 Other:
 Identified: 8/18/2015
 Withdrawn:
 Stricken:

