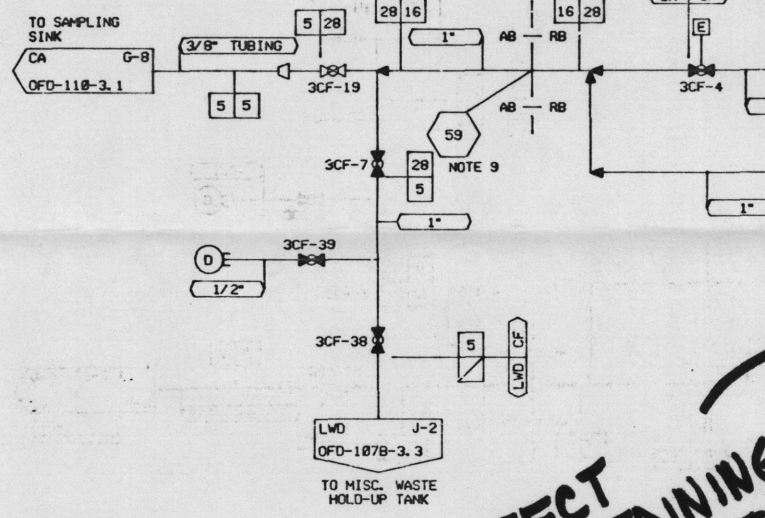


.11  
 .50  
 8.5"  
 11"  
 17"  
 22"  
 34"

H  
G  
F  
E  
D  
C  
B  
A

CHEMICAL ADDITION  
N2 SUPPLY & HIGH  
PRESSURE INJECTION  
N J-14  
OFD-127B-3.2



**SUBJECT  
WELD PERTAINING  
TO REQUEST FOR  
RELIEF**

FROM DECAY HEAT  
REMOVAL COOLER  
3A DISCHARGE  
LPI K-14  
OFD-102A-3.2

- NOTES:**
- OPERATING MODE REPRESENTED BY BOLD LINES CORE FLOOD TANK DISCHARGE INTO REACTOR VESSEL.
  - |                            |                    |
|----------------------------|--------------------|
| 1/2" THRU 6"               | SCH. -160          |
| 8" THRU 18"                | SCH. -140          |
| 1/2" THRU 12"              | SCH. -40           |
| 14"                        | SCH. -STD.         |
| 16" THRU 24"               | SCH. -XS           |
| 1/2" THRU 2"               | SCH. -40           |
| 2 1/2" THRU 12"            | SCH. -185          |
| 14" THRU 24"               | SCH. -18           |
| 1/2" THRU 2"               | SCH. -88S          |
| 1/4" THRU 1/2" TUBING WALL | = .035 PER TS-2701 |
| 1/2" THRU 4"               | SCH. -40           |
| 1/2" THRU 2"               | SCH. -88           |
| 2 1/2" THRU 18"            | SCH. -40           |
| 12" THRU 24"               | SCH. -STD          |
| 1"                         | SCH. -160          |
  - FOR DETAILS OF PENETRATION SCHEDULE TRANSITION REFER TO O-2433C
  - ORIGINAL ISSUE OF THIS DWG WAS BASED ON PO-102A-3, REV. 30.

LINE NO.	DUKE CLASS	DESIGN PARAMETERS			PIPE SPEC. NO.	PIPE SCH. NO.
		DESIGN PRESS.	DESIGN TEMP.	MATERIALS		
2	A	2500 PSIG	300°F	SS	1501.1	NOTE
3	B	2500 PSIG	300°F	SS	1501.2	NOTE
4	B	700 PSIG	300°F	SS	601.2	NOTE
5	E	700 PSIG	300°F	SS	601.4	NOTE
13	E	150 PSIG	300°F	SS	151.4	NOTE
16	BC	700 PSIG	300°F	SS	601.3	NOTE
18	E	100 PSIG	200°F	CS	150.4	NOTE
20	BC	700 PSIG	300°F	SS	601.3	NOTE
29	F	100 PSIG	200°F	CS	150.4	NOTE
30	AC	2500 PSIG	300°F	SS	1501.3	NOTE
31	BC	2500 PSIG	300°F	SS	1501.3	NOTE
37	E	2500 PSIG	300°F	SS	1501.4	NOTE
38	E	700 PSIG	300°F	SS	601.4	NOTE
40	B	700 PSIG	300°F	SS	601.2	NOTE
41	BC	700 PSIG	300°F	SS	601.3	NOTE
59	BC	700 PSIG	300°F	SS	601.3	NOTE

ERN:OX000LG6

1 2 3 4 5