

*Official*

JUN 04 1992

Docket Nos. 50-269, 50-270,  
50-287, 72-4  
License Nos. DPR 38, DPR 47,  
DPR 55, SNM 2503

Duke Power Company  
ATTN: Mr. J. W. Hampton  
Vice President  
Oconee Site  
P. O. Box 1439  
Seneca, SC 29697

Gentlemen:

SUBJECT: SYSTEMATIC ASSESSMENT OF LICENSEE PERFORMANCE  
(NRC INSPECTION REPORT NOS. 50-269/92-01, 50-270/92-01,  
50-287/92-01 AND 72-4/92-01)

This refers to the NRC's Systematic Assessment of Licensee Performance (SALP) report for your Oconee facility which was sent to you on April 6, 1992; our meeting of April 15, 1992, at which we discussed the report; and your written comments dated May 14, 1992. I have enclosed a summary of our presentation at the meeting, a copy of your written comments, a copy of the SALP slides which were used at the presentation, and the Final SALP report for the period August 1, 1990 through February 1, 1992.

We appreciate your efforts in evaluating the Initial SALP Report and providing comments. The following is our evaluation of your comments.

Engineering/Technical Support

Your response requested that additional comments or consideration be given to the following areas in the final SALP Report; licensed operator training based on previous NRC inspection results, pre-examination reviews, simulator accuracy, fittings used to transition between different pipe sizes, startup transformer operability, NRC Bulletin 88-08 response, and the Spent Fuel Storage Installation Docket Number.

We have carefully considered the justification for your request and have modified the draft SALP Report to include the changes we judged to be appropriate. These changes, however, did not alter our overall evaluation.

In accordance with Section 2.790(a), a copy of this letter and its enclosures will be placed in the NRC Public Document Room.

9207020159 920604  
PDR ADOCK 05000269  
G PDR

IE 40  
11.  
~~IE 03~~

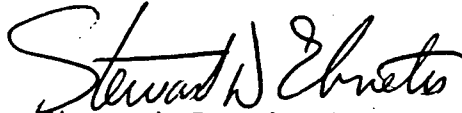
JUN 04 1992

Duke Power Company

2

No reply to this letter is required; however, should you have any questions concerning these matters, I will be pleased to discuss them with you.

Sincerely,

  
Stewart D. Ebnetter  
Regional Administrator

Enclosures:

1. Meeting Summary
2. Duke Power Comments on SALP
3. SALP Slides
4. Revision Sheet
5. Final SALP Report

cc w/encls:

M. E. Patrick  
Compliance  
Duke Power Company  
P. O. Box 1439  
Seneca, SC 29679

A. V. Carr, Esq.  
Duke Power Company  
422 South Church Street  
Charlotte, NC 28242-0001

County Supervisor of  
Oconee County  
Walhalla, SC 29621

Robert B. Borsum  
Babcock and Wilcox Company  
Nuclear Power Generation Division  
1700 Rockville Pike, Suite 525  
Rockville, MD 20852

J. Michael McGarry, III, Esq.  
Winston and Strawn  
1400 L Street, NW  
Washington, D. C. 20005

Office of Intergovernmental Relations  
116 West Jones Street  
Raleigh, NC 27603

(cc w/encls cont'd - See page 3)

JUN 04 1992

Duke Power Company

3

(cc w/encls cont'd)  
Heyward G. Shealy, Chief  
Bureau of Radiological Health  
South Carolina Department of Health  
and Environmental Control  
2600 Bull Street  
Columbia, SC 29201

Manager, LIS  
NUS Corporation  
2650 McCormick Drive  
Clearwater, FL 34619-1035

R. L. Gill  
Nuclear Production Department  
Duke Power Company  
P. O. Box 1007  
Charlotte, NC 28201-1007

Karen E. Long  
Assistant Attorney General  
N. C. Department of Justice  
P. O. Box 629  
Raleigh, NC 27602

Duke Power Company

4

(cc w/encls cont'd)  
Heyward G. Shealy, Chief  
Bureau of Radiological Health  
South Carolina Department of Health  
and Environmental Control  
2600 Bull Street  
Columbia, SC 29201

Manager, LIS  
NUS Corporation  
2650 McCormick Drive  
Clearwater, FL 34619-1035

R. L. Gill  
Nuclear Production Department  
Duke Power Company  
P. O. Box 1007  
Charlotte, NC 28201-1007

Karen E. Long  
Assistant Attorney General  
N. C. Department of Justice  
P. O. Box 629  
Raleigh, NC 27602

bcc w/encls:  
L. Wiens, NRR  
W. Miller, RII  
G. A. Belisle, RII  
A. R. Herdt, RII  
Document Control Desk  
J. Johnson, RII  
NRC Resident Inspector  
U.S. Nuclear Regulatory Commission  
Route 2, Box 610  
Seneca, SC 29678

RII:DRP  
BMiller  
05/1/92  
6

RII:DRP  
ABelisle  
05/1/92  
6

RII:DRP  
AHerdt  
06/1/92

RII:DRP  
JJohnson  
05/1/92

RII:DRSS  
BMallett  
06/1/92

HQ:NRR  
DMatthews  
5/7/92  
6

HQ:NRR  
LWiens  
5/7/92  
6

RII:DRP  
PHarmon  
5/7/92

RII:DRS  
EMerschhoff  
6/1/92

RII:DRP  
LReyes  
6/2/92

## ENCLOSURE 1

### MEETING SUMMARY

- A. A meeting was held on April 15, 1992, at the Oconee station to discuss the results of the NRC Systematic Assessment of Licensee Performance (SALP) evaluation of your facility for the appraisal period of August 1, 1990, through February 1, 1992.

B. Licensee Attendees

H. Tucker, Senior Vice President, Nuclear Generation  
Department  
J. Hampton, Vice President, Oconee Nuclear Site  
B. Barron, Station Manager  
R. Sweigart, Operations Superintendent  
J. Davis, Safety Assurance Manager  
R. Gill, Jr., Licensing  
M. Patrick, Compliance

The list of licensee attendees above does not include all the Duke Power Company employees that were present at the SALP presentation.

C. NRC Attendees

J. Milhoan, Deputy Regional Administrator, Region II (RII)  
J. Stohr, Director, Division of Radiation Safety  
and Safeguards, RII  
E. Merschhoff, Deputy Director, Division of Reactor Safety,  
RII  
G. Zech, Chief, Performance and Quality Evaluation Branch,  
Office of Nuclear Reactor Regulation (NRR)  
A. Herdt, Chief, Reactor Projects Branch 3, RII  
L. Wiens, Project Manager, Project Directorate II-3, NRR  
K. Clark, Public Affairs Officer, RII  
R. Trojanowski, Regional State Liaison Officer, RII  
P. Harmon, Senior Resident Inspector, Oconee Facility  
K. Poertner, Resident Inspector, Oconee Facility  
B. Desai, Resident Inspector, Oconee Facility  
C. Evans, Regional Counsel, RII

D. Public Attendees

J. Barnett, Greenville News  
C. Kreckler, Anderson Independent  
J. Adams, Seneca Journal  
D. Mangrum, Radio Station WGOG  
M. Cox, Television Station WYFF (Channel 4)  
D. Cambell, State of South Carolina  
G. Snyder, State Of South Carolina  
D. Evitt, Pickens County, South Carolina

# **UNITED STATES NUCLEAR REGULATORY COMMISSION**



## **SYSTEMATIC ASSESSMENT OF LICENSEE PERFORMANCE (SALP)**

**LICENSEE PRESENTATION**

DUKE POWER  
COMPANY  
SALP CYCLE 9

AUGUST 1, 1990  
THROUGH  
FEBRUARY 1, 1992

OCONEE UNITS 1, 2 & 3

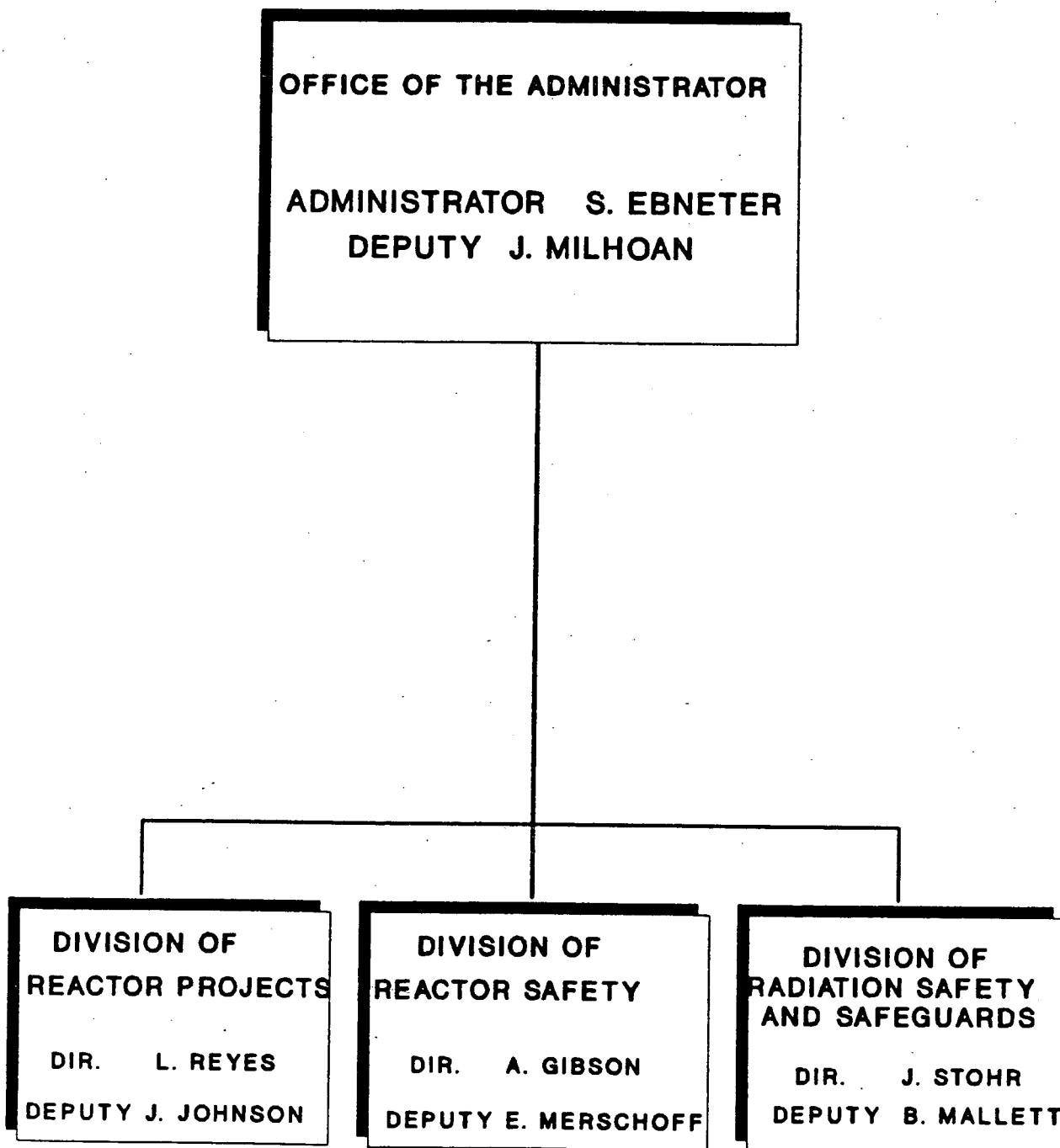
APRIL 15, 1992

# **SALP PROGRAM OBJECTIVES**

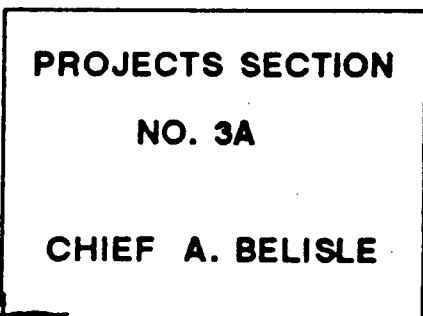
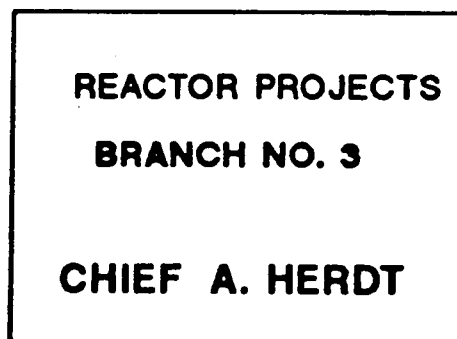
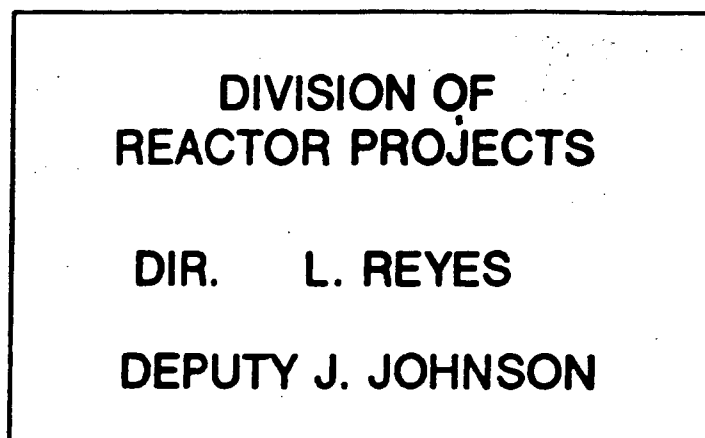
- 1. IDENTIFY TRENDS IN LICENSEE PERFORMANCE**
- 2. PROVIDE A BASIS FOR ALLOCATION OF NRC RESOURCES**
- 3. IMPROVE NRC REGULATORY PROGRAM**



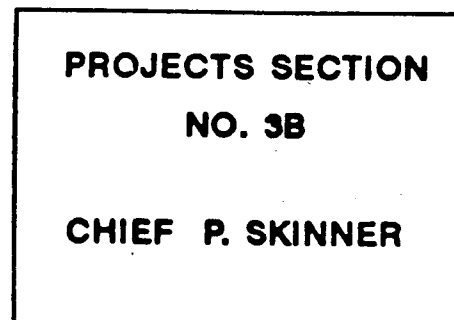
# REGION II ORGANIZATION



# **DIVISION OF REACTOR PROJECTS ORGANIZATION**



**CATAWBA  
MCGUIRE  
OCONEE**



**HATCH  
VOGTLE**

# NRR ORGANIZATION

OFFICE OF  
NUCLEAR REACTOR  
REGULATION

DIR. T. MURLEY

ASSOC. DIRECTOR FOR  
PROJECTS  
J. PARTLOW

DIVISION OF  
REACTOR PROJECTS I/II

S. VARGA, DIR. I/II

G. LAINAS, ASST. DIR. II

D. MATTHEWS, DIR. II-3

L. WIENS, PROJ. MGR.

OCONEE

DIVISION OF  
REACTOR PROJECTS III/IV/V  
AND  
SPECIAL PROJECTS

ASSOC. DIRECTOR FOR  
INSPECTION AND  
TECHNICAL ASSESSMENT

DIVISION OF  
ENGINEERING  
TECHNOLOGY

DIVISION OF  
OPERATIONAL EVENTS  
ASSESSMENT

DIVISION OF  
REACTOR INSPECTION  
AND SAFEGUARDS

DIVISION OF RADIATION  
PROTECTION AND  
EMERGENCY PREPAREDNESS

DIVISION OF LICENSEE  
PERFORMANCE AND  
QUALITY EVALUATION

DIVISION OF  
SYSTEMS TECHNOLOGY

# PERFORMANCE ANALYSIS AREAS FOR OPERATING REACTORS

- A. PLANT OPERATIONS
- B. RADIOLOGICAL CONTROLS
- C. MAINTENANCE/SURVEILLANCE
- D. EMERGENCY PREPAREDNESS
- E. SECURITY
- F. ENGINEERING/TECHNICAL SUPPORT
- G. SAFETY ASSESSMENT/QUALITY  
VERIFICATION

# **AREA PERFORMANCE**

## **CATEGORY 1**

**LICENSEE MANAGEMENT ATTENTION TO  
AND INVOLVEMENT IN NUCLEAR SAFETY  
OR SAFEGUARDS ACTIVITIES RESULTED  
IN A SUPERIOR LEVEL OF PERFORMANCE.  
NRC WILL CONSIDER REDUCED LEVELS  
OF INSPECTION EFFORT.**

# **AREA PERFORMANCE**

## **CATEGORY 2**

**LICENSEE MANAGEMENT ATTENTION TO  
AND INVOLVEMENT IN NUCLEAR SAFETY  
OR SAFEGUARDS ACTIVITIES RESULTED  
IN A GOOD LEVEL OF PERFORMANCE.  
NRC WILL CONSIDER MAINTAINING  
NORMAL LEVELS OF INSPECTION  
EFFORT.**

# **AREA PERFORMANCE**

## **CATEGORY 3**

**LICENSEE MANAGEMENT ATTENTION TO  
AND INVOLVEMENT IN NUCLEAR SAFETY  
OR SAFEGUARDS ACTIVITIES RESULTED  
IN AN ACCEPTABLE LEVEL OF PERFORMANCE;  
HOWEVER, BECAUSE OF THE NRC'S CONCERN  
THAT A DECREASE IN PERFORMANCE MAY  
APPROACH OR REACH AN UNACCEPTABLE  
LEVEL, NRC WILL CONSIDER INCREASED  
LEVELS OF INSPECTION EFFORT.**

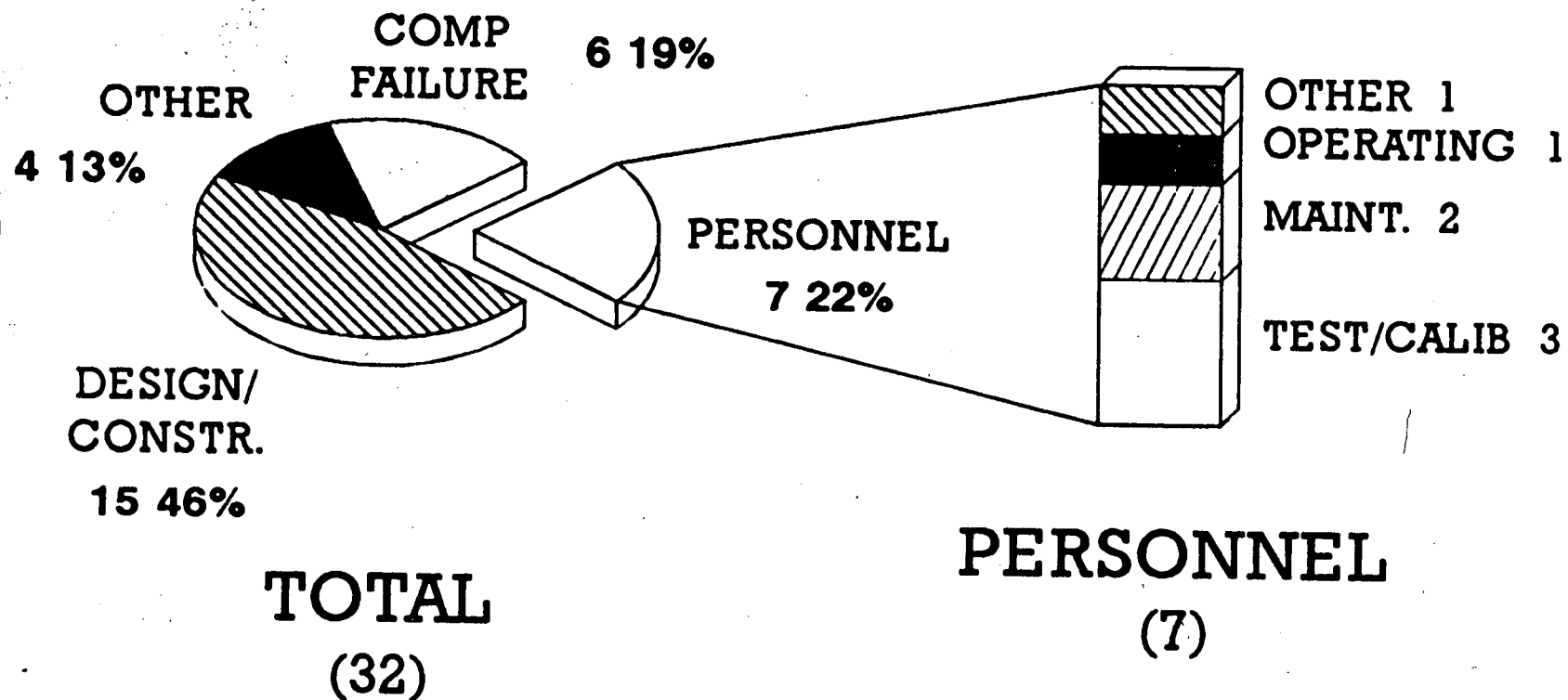
# **EVALUATION CRITERIA**

- 1. MANAGEMENT INVOLVEMENT AND CONTROL  
IN ASSURING QUALITY**
- 2. APPROACH TO IDENTIFICATION AND  
RESOLUTION OF TECHNICAL ISSUES  
FROM A SAFETY STANDPOINT**
- 3. ENFORCEMENT HISTORY**
- 4. REPORTING, ANALYSIS AND CORRECTIVE  
ACTION OF REPORTABLE EVENTS**
- 5. STAFFING (INCLUDING MANAGEMENT)**
- 6. TRAINING EFFECTIVENESS AND  
QUALIFICATION**



# OCONEE

AUGUST 1, 1990 - FEBRUARY 1, 1992  
(CYCLE 9)



## LERs

# **OPERATIONS**

## **CATEGORY 2**

**OVERALL PERFORMANCE IN THIS  
AREA DECLINED TO GOOD**

### **STRENGTHS**

**OPERATIONS AT POWER**

**STAFF KNOWLEDGE / EXPERIENCE**

**CORRECTIVE ACTIONS**

**FIRE PROTECTION**

# **OPERATIONS**

## **CATEGORY 2**

**CHALLENGES**

**SHUTDOWN OPERATIONS**

**WATCHSTANDING PRACTICES**

**PROCEDURES**

**CONFIGURATION CONTROL**

**MANAGEMENT INVOLVEMENT**

# **RADIOLOGICAL CONTROLS CATEGORY 1**

**OVERALL PERFORMANCE IN THIS  
AREA REMAINED SUPERIOR**

## **STRENGTHS**

**PERFORMANCE**

**PERSONNEL**

**ALARA**

**EFFLUENT CONTROL**

**RADIATION MONITORING**

# **RADIOLOGICAL CONTROLS CATEGORY 1**

## **CHALLENGES**

**CONTAMINATION CONTROL**

**MAINTAINING PERFORMANCE**

# **MAINTENANCE/ SURVEILLANCE**

## **CATEGORY 2**

**OVERALL PERFORMANCE IN THIS  
AREA REMAINED GOOD**

### **STRENGTHS**

#### **PERSONNEL**

#### **PROGRAMS**

- \* VIBRATION MONITORING**

- \* THERMOGRAPHY**

- \* EROSION / CORROSION**

- \* ISI**

# **MAINTENANCE/ SURVEILLANCE**

## **CATEGORY 2**

### **CHALLENGES**

#### **PERFORMANCE**

- \* MAINT. INDUCED VULNERABILITIES**
- \* SURVEILLANCE INDUCED EVENTS**

#### **INDEPENDENT VERIFICATION**

#### **PROCEDURAL COMPLIANCE**

#### **MATERIAL CONDITION**

# **EMERGENCY PREPAREDNESS**

## **CATEGORY 1**

**OVERALL PERFORMANCE IN THIS AREA  
REMAINED SUPERIOR**

### **STRENGTHS**

**MANAGEMENT INVOLVEMENT**

**PERFORMANCE**

**PERSONNEL**

**FACILITIES**

**CORRECTIVE ACTION**

### **CHALLENGE**

**MAINTAINING PERFORMANCE**



# **SECURITY CATEGORY 1**

**OVERALL PERFORMANCE IN THIS  
AREA IMPROVED TO SUPERIOR**

## **STRENGTHS**

**MANAGEMENT INVOLVEMENT**

**PERSONNEL**

**PERFORMANCE**

**FFD PROGRAM**

## **CHALLENGES**

**CCTV PERFORMANCE**

**MAINTAINING PERFORMANCE**

# **ENGINEERING/ TECHNICAL SUPPORT**

## **CATEGORY 2**

**OVERALL PERFORMANCE IN THIS  
AREA DECLINED TO GOOD**

### **STRENGTHS**

**RESPONSIVENESS TO STATION**

**DBD PROGRAM**

**OPERATING EXPERIENCE REVIEW PROGRAM**

**MOV PROGRAM**

**ISI PROGRAM**

# **ENGINEERING/ TECHNICAL SUPPORT**

## **CATEGORY 2**

**CHALLENGES**

**PLANNING**

**PERFORMANCE**

**PROCEDURAL ADEQUACY**

**LICENSED OPERATOR TRAINING**

# **SAFETY ASSESSMENT/ QUALITY VERIFICATION**

## **CATEGORY 2**

**OVERALL PERFORMANCE IN THIS  
AREA REMAINED GOOD**

### **STRENGTHS**

**RESOLUTION OF SAFETY ISSUES**

**HARDWARE IMPROVEMENTS**

**INTERACTION WITH INDUSTRY AND THE NRC**

### **CHALLENGES**

**SELF ASSESSMENT / OVERSIGHT**

**LICENSING SUBMITTALS**

# **FACILITY PERFORMANCE SUMMARY**

## **OCONEE-CYCLE 9 / 18 MOS.**

<b><u>FUNCTIONAL AREA</u></b>	<b><u>RATING LAST PERIOD</u></b>	<b><u>RATING THIS PERIOD</u></b>
<b>PLANT OPERATIONS</b>	<b>1</b>	<b>2</b>
<b>RADIOLOGICAL CONTROLS</b>	<b>1</b>	<b>1</b>
<b>MAINTENANCE/SURVEILLANCE</b>	<b>2(I)</b>	<b>2</b>
<b>EMERGENCY PREPAREDNESS</b>	<b>1</b>	<b>1</b>
<b>SECURITY</b>	<b>2(I)</b>	<b>1</b>
<b>ENGINEERING/TECHNICAL SUPPORT</b>	<b>1</b>	<b>2</b>
<b>SAFETY ASSESSMENT/ QUALITY VERIFICATION</b>	<b>2</b>	<b>2</b>