

# CATEGORY 1

## REGULATORY INFORMATION DISTRIBUTION SYSTEM (RIDS)

ACCESSION NBR: 9707230004	DOC. DATE: 97/07/15	NOTARIZED: NO	DOCKET #
FACIL: 50-269	Oconee Nuclear Station, Unit 1, Duke Power Co.		05000269
50-270	Oconee Nuclear Station, Unit 2, Duke Power Co.		05000270
50-287	Oconee Nuclear Station, Unit 3, Duke Power Co.		05000287
50-369	William B. McGuire Nuclear Station, Unit 1, Duke Powe		05000369
50-370	William B. McGuire Nuclear Station, Unit 2, Duke Powe		05000370
50-413	Catawba Nuclear Station, Unit 1, Duke Power Co.		05000413
50-414	Catawba Nuclear Station, Unit 2, Duke Power Co.		05000414

AUTH. NAME	AUTHOR AFFILIATION
TUCKMAN, M.S.	Duke Power Co.
RECIP. NAME	RECIPIENT AFFILIATION
	Document Control Branch (Document Control Desk)

SUBJECT: Forwards description of post-merger organization applicable to Duke Energy Corp Nuclear Program, corporate organization & offsite organization re merger w/PanEnergy Corp. Oconee, McGuire or Catawba nuclear site organizations not changed.

DISTRIBUTION CODE: Q004D COPIES RECEIVED: LTR 1 ENCL 1 SIZE: 8  
 TITLE: QA Topical Report, Change, Amendment, or Correspondence (Docket/Utili

NOTES:

	RECIPIENT ID CODE/NAME	COPIES LTR ENCL	RECIPIENT ID CODE/NAME	COPIES LTR ENCL
	LABARGE, D	1 1	NERSES, V	1 1
	TAM, P.	1 1		
INTERNAL:	ACRS	1 1	DRS/RGN. II	1 1
	FILE CENTER 01	1 1	NRR/DISP/PIMB	1 1
	NRR/DRCH/HQMB	1 1	NUDOCS-ABSTRACT	1 1
	OC/LFDCB	1 1	RGN2 FILE	1 1
EXTERNAL:	DMB/OSS	1 1	IHS	1 1
	NRC PDR	1 1		
	ADM/O- P137	1 1		
	ASLBP	1 1		
	CAA-16B-13	1 1		
	OGC	1 1		
	Secy/DSB	1 1		

NOTE TO ALL "RIDS" RECIPIENTS:  
 PLEASE HELP US TO REDUCE WASTE! CONTACT THE DOCUMENT CONTROL DESK, ROOM OWFN 5D-5 (EXT. 415-2083) TO ELIMINATE YOUR NAME FROM DISTRIBUTION LISTS FOR DOCUMENTS YOU DON'T NEED!

TOTAL NUMBER OF COPIES REQUIRED: LTR 19 ENCL 18

C  
A  
T  
E  
G  
O  
R  
Y  
  
1  
  
D  
O  
C  
U  
M  
E  
N  
T



Duke Power Company  
A Duke Energy Company  
422 South Church Street  
P.O. Box 1244  
Charlotte, NC 28201-1244

July 15, 1997

U. S. Nuclear Regulatory Commission  
ATTENTION: Document Control Desk  
Washington, DC 20555-0001

SUBJECT: Duke Energy Corporation  
Oconee Nuclear Station Units 1, 2, and 3  
Docket Nos. 50-269, 270, 287  
McGuire Nuclear Station Units 1 and 2  
Docket Nos. 50-369, 370  
Catawba Nuclear Station Units 1 and 2  
Docket Nos. 50-413, 414

Notification of Organizational Changes

In letters dated January 6, 1997 and June 12, 1997, Duke Power Company provided information to the NRC concerning its merger with PanEnergy Corporation. The purpose of this letter is for Duke Energy Corporation to inform the NRC Staff of the post-merger organization that is now applicable to the quality assurance program for its nuclear power plants.

Section 17., INTRODUCTION, of the Duke Quality Assurance Program Topical Report, Duke-1 (hereafter referred to as Topical Report) requires that the NRC be notified of significant organizational changes within thirty days of announcement. This letter implements this section of the Topical Report.

Currently, there is an amendment to the Topical Report that is awaiting NRC approval. Proposed Amendment 21 to the Topical Report has been previously submitted to the NRC by letter dated July 11, 1996 and supplemented by letters dated November 19, 1996, December 3, 1996, and June 2, 1997. Amendment 21 is currently undergoing NRC review (NRC TAC Nos. M96624 through M96630). Usually, significant organization changes are submitted to the NRC in the form of an amendment to the Topical Report. Since Amendment 21 is now under NRC review, it has been determined that it would be impractical to submit Amendment 22 at this time, or to supplement Amendment 21 with the description of the new organization. Following approval of Amendment 21, a subsequent amendment will be submitted to the NRC and it

1/1

0004

Add: LA EVCL  
LA  
PD  
ADM/O-P137  
ASLBP  
CAA-16B-13  
O&C  
SECY/DSA

9707230004 970715  
PDR ADOCK 05000269  
H PDR



will fully integrate the new Duke Energy Corporation organization into the Topical Report.

The organizational changes resulting from the Duke/PanEnergy merger are considered administrative in nature. These changes have been determined to have no impact on Duke Energy Corporation's capabilities for the future operation of Oconee, McGuire, and Catawba Nuclear Stations. Likewise, in a NRC letter dated June 5, 1997, which included a safety evaluation, the NRC Staff concluded there was no basis for objection to the merger. This conclusion was reached since the merger caused no adverse affect on Duke Energy Corporation's financial or technical qualifications, with respect to the operation of the Oconee, McGuire ,and Catawba Nuclear Stations.

This letter includes these attachments:

Attachment 1 - Description of the Post-merger Organization Applicable to the Duke Energy Corporation Nuclear Program.

Attachment 2 - Duke Energy Corporation Corporate Organization

Attachment 3 - Offsite Organization

There were no changes to the Oconee, McGuire, or Catawba Nuclear Site organizations resulting from the merger.

Please direct inquires on this matter to J. S. Warren at (704) 382-4986.

Very truly yours,



M. S. Tuckman  
Executive Vice President  
Nuclear Generation

Attachments

U. S. NRC, Document Control Desk

July 15, 1997

Page 3

xc w/att: L. A. Reyes  
NRC Regional Administrator, Region II

D. E. Labarge (ONS)  
V. Nerses (MNS)  
P. S. Tam (CNS)  
NRC Senior Project Managers  
ONRR

R. J. Freudenberger (CNS)  
M. A. Scott (ONS)  
S. M. Shaeffer (MNS)  
NRC Senior Resident Inspectors

Description of the Post-merger Organization Applicable to  
the Duke Energy Corporation Nuclear Program

The following paragraphs provide a brief description of the portion of the Duke Energy Corporation organization that implements the provisions of the Topical Report. The organization is also shown on the charts included as Attachments 2 and 3 to this letter.

Corporate Organization

The Chairman/Chief Executive Officer and President/Chief Operating Officer have overall responsibility for Design, Construction, and Operation of generation and transmission facilities. Reporting to the Chairman/Chief Executive Officer and President/Chief Operating Officer is the President of the Duke Power Group, who has the overall authority and responsibility for the quality assurance program, and who directs several nuclear quality related activities including the Nuclear Generation, Electric System Support, and the Group Human Resources Departments through their respective senior vice president and vice presidents.

Reporting to the Chairman/Chief Executive Officer and President/Chief Operating Officer is the President, Energy Transmission who directs several activities, including the nuclear quality related activities of the Electric Transmission Department through its senior vice president.

Reporting to the Chairman/Chief Executive Officer and President/Chief Operating Officer is the Executive Vice President and Chief Administrative Officer, who directs several nuclear quality related activities, including the Information Management/Telecommunications Department and the Shared Services Department, through their respective senior vice presidents.

Nuclear Generation Department

The functions of Nuclear Generation are now directed by the Executive Vice President, Nuclear Generation. There are no other changes to the Nuclear Generation Department organization resulting from the merger. The Executive Vice President, Nuclear Generation formulates, recommends, and carries out plans, policies, and programs related to the nuclear generation of electricity; and reports to the

President of the Duke Power Group. The Nuclear Site Vice Presidents (Site Officer) and the Nuclear General Office Division Managers report to the Executive Vice President, Nuclear Generation.

#### Electric System Support Department

The Electric System Support Department is directed by the Vice President, Electric System Support, who reports to the President of the Duke Power Group. The Electric System Support Department provides centralized services to the Duke Power Group in areas such as environmental engineering, NDE, measuring and test equipment calibration, craft support, and electrical equipment maintenance and testing. The nuclear quality related functions of the Electric System Support Department are not affected by the merger.

#### Group Human Resources

The Duke Power Group Human Resources provides nuclear quality related input to the Duke Power Group, the Administrative Group, and the Energy Transmission Group in such areas as fire protection and fitness for duty. This is consistent with the pre-merger, functions of Generation Organization Effectiveness Services. The Duke Power Group Human Resources is directed by the Vice President, Group Human Resources, who reports to the President, Duke Power Group.

#### Information Management/Telecommunications Department

The Information Management/Telecommunications Department is responsible for the development and maintenance of mainframe computer software and data which support QA Condition activities. These activities in Information Management/Telecommunications are directed by managers and directors reporting to the Senior Vice President, Information Management/Telecommunications who reports to the Executive Vice President and Chief Administrative Officer. These activities are consistent with the pre-merger functions of the Information Management Department. The nuclear quality related functions of the Information Management/Telecommunications Department are not affected by the merger.

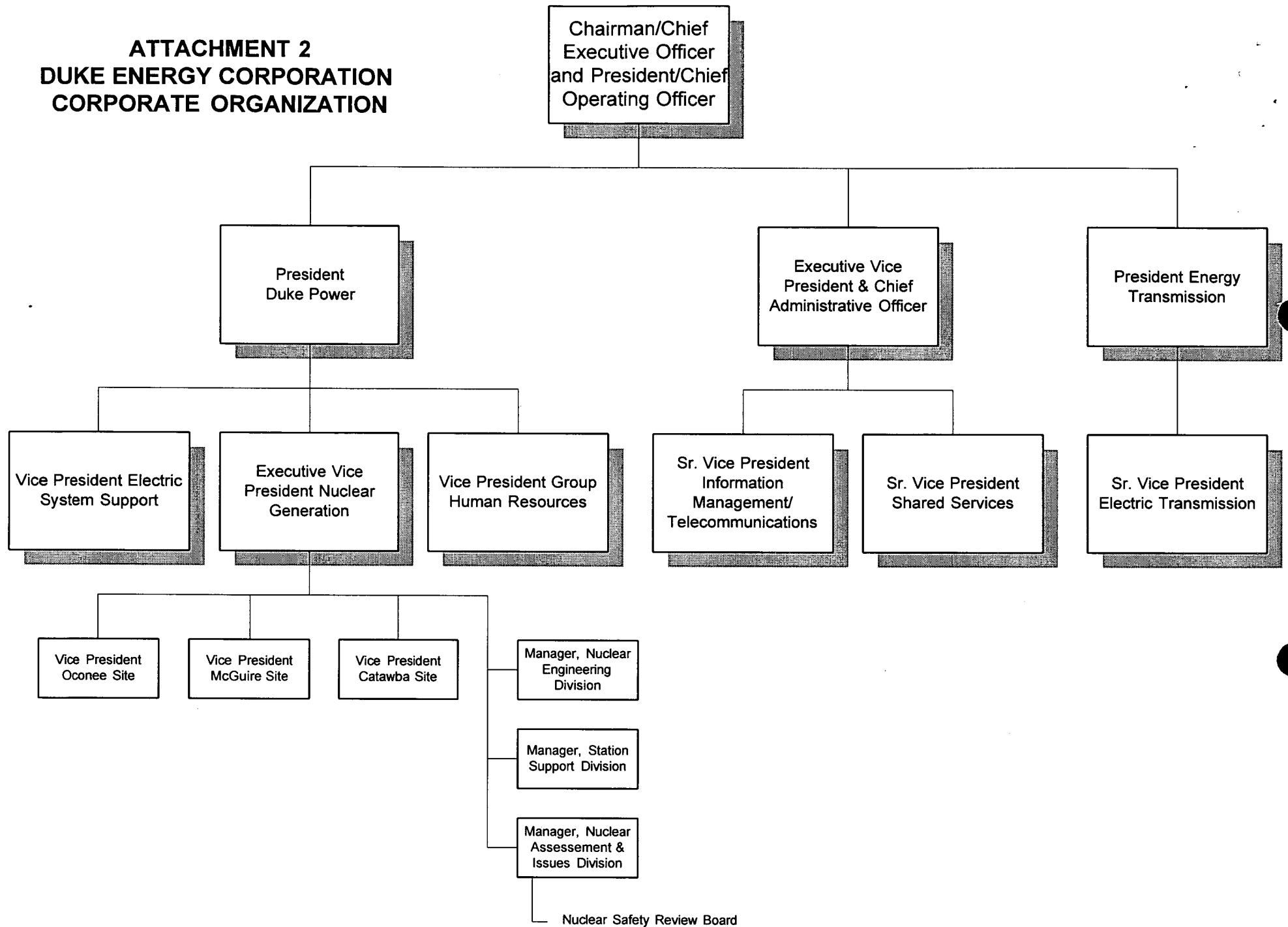
Shared Services Department

Shared Services is responsible for the nuclear quality related activities associated with the Materials and Equipment Database (MEDB), which is the computer database containing necessary attributes for purchase of a commodity, the purchasing function, and technical training. The Shared Services Department is directed by the Senior Vice President, Shared Services, who reports to the Executive Vice President and Chief Administrative Officer.

Electric Transmission Department

The Electric Transmission Department provides maintenance and testing services to the nuclear stations for selected electrical equipment. These nuclear quality related activities are consistent with the pre-merger functions of the Power Delivery Department. The Electric Transmission Department is directed by the Senior Vice President, Electric Transmission, who reports to the President, Energy Transmission.

**ATTACHMENT 2  
DUKE ENERGY CORPORATION  
CORPORATE ORGANIZATION**





# ATTACHMENT 3 OFF-SITE ORGANIZATION

