



**UNITED STATES
NUCLEAR REGULATORY COMMISSION**
WASHINGTON, D.C. 20555-0001

August 7, 2015

Mr. Ken Carleton
Tribal Historic Preservation Officer
Mississippi Band of Choctaw Indians
P.O. Box 6010
Choctaw, MS 39350

**SUBJECT: US NUCLEAR REGULATORY COMMISSION, CONTINUING
PALEOLIQUEFACTION FIELD WORK ALONG SELECTED RIVER SEGMENTS
IN ARKANSAS AND MISSISSIPPI**

Dear Mr. Carleton:

The United States Nuclear Regulatory Commission (NRC) has performed the field work described in our National Historic Preservation Act (NHPA), Section 106 consultation letter sent to your office, dated February 15, 2013 (enclosed). The field work identified various paleoliquefaction features in Arkansas, Mississippi, and Tennessee for the purpose of assessing seismic hazards to commercial nuclear power plants. The NRC's contractor conducted this field work along various river segments in Arkansas, Mississippi, and Tennessee (please see Figure 1 below for the location of the work conducted previously) during September through December of 2013 and 2014.

The NRC plans to continue the field work described in its letter of February 15, 2013 in Arkansas and Mississippi during the months of September through December 2015. Figures 2 and 3 show additional river segments in Arkansas and Mississippi that may be the subject of the NRC's continuing field work. Due to the limited scope and minor disturbance of this field work, the NRC has determined that the expansion of the field work to these additional river segments will have no adverse effect on any historic properties or other cultural resources located along or in these river segments, assuming such properties or resources are present. In the event that the NRC considers any particular site along any of the subject river segments to be a candidate site for a paleoliquefaction study, which may involve the excavation of a trench, the NRC will determine the area of potential effects and then initiate consultation with your office, the applicable State Historic Preservation Officer, and other interested consulting parties. The NRC considers such paleoliquefaction study, if pursued, to be a separate undertaking than the field work described in our letter of February 15, 2013.

Please provide your comments on our determination of no adverse effect for the proposed field work at your earliest convenience. If you have any questions or require additional information, please contact Thomas Weaver by phone at (301) 415-2383 or by email at Thomas.Weaver@nrc.gov. All written correspondence should be sent to the NRC at the following address with attention to the Document Control Desk. We look forward to your feedback.

ATTN: Document Control Desk
U.S. Nuclear Regulatory Commission
Washington, DC 20555-0001

Sincerely,

/RA Kathryn M. Brock for/

Brian E. Thomas, Director
Division of Engineering
Office of Nuclear Regulatory Research

Enclosure:

Letter from NRC to the Mississippi Band of Choctaw Indians dated February 15, 2013.

Please provide your comments on our determination of no adverse effect for the proposed field work at your earliest convenience. If you have any questions or require additional information, please contact Thomas Weaver by phone at (301) 415-2383 or by email at Thomas.Weaver@nrc.gov. All written correspondence should be sent to the NRC at the following address with attention to the Document Control Desk. We look forward to your feedback.

ATTN: Document Control Desk
U.S. Nuclear Regulatory Commission
Washington, DC 20555-0001

Sincerely,

/RA Kathryn M. Brock for/

Brian E. Thomas, Director
Division of Engineering
Office of Nuclear Regulatory Research

Enclosure:

Letter from NRC to the Mississippi Band of Choctaw Indians dated February 15, 2013.

cc: Dr. Martitia Tuttle
M. Tuttle & Associates
128 Tibbetts Lane
Georgetown, ME 04548

Dr. Thomas Weaver, P.E., NRC/RES/DE/SGSEB
Mr. Andrew Pessin, Esq, NRC/OGC/GCLR/RMR
Mr. Stuart Easson, NRC/NMSS/MSTR/FSTB

ADAMS Accession No.: ML15237A084

RES No:

OFFICE	RES/DE/SGSEB	RES/DE/SGSEB	OGC (via email)	D: RES/DE
NAME	T. Weaver	J. Burke	A. Pessin	B. Thomas (KMB for)
DATE	08/06/15	08/06/15	7/23/15	08/07/15

OFFICIAL RECORD COPY

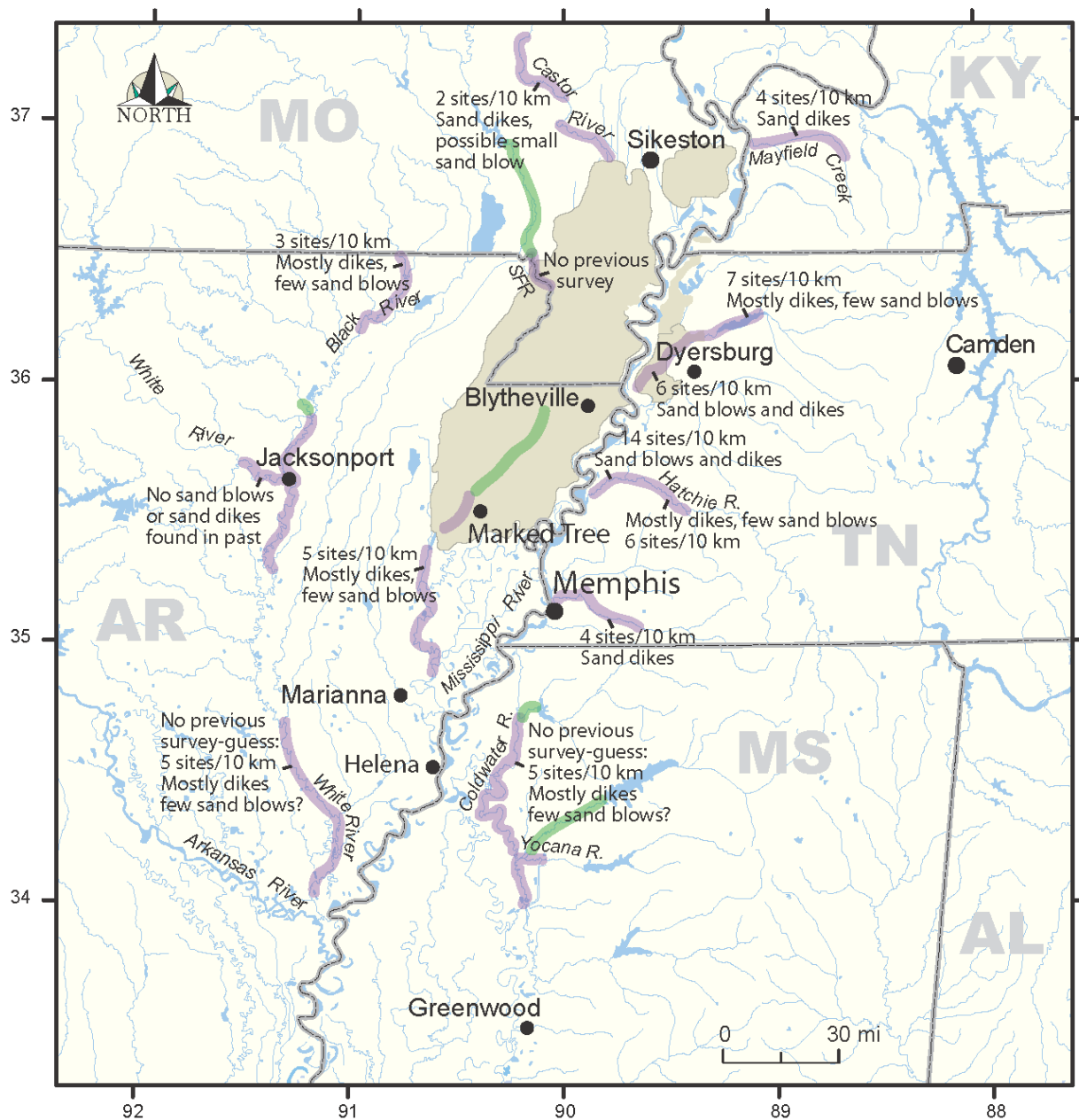


Figure 1 Map of paleoliquefaction study area in the Central U.S. River segments identified in the NRC’s letter of February 15, 2013 are delineated in purple. The NRC has conducted, and may continue, field work in these purple delineated river segments. Additional river segments where the NRC proposes to expand its field work are delineated in green.

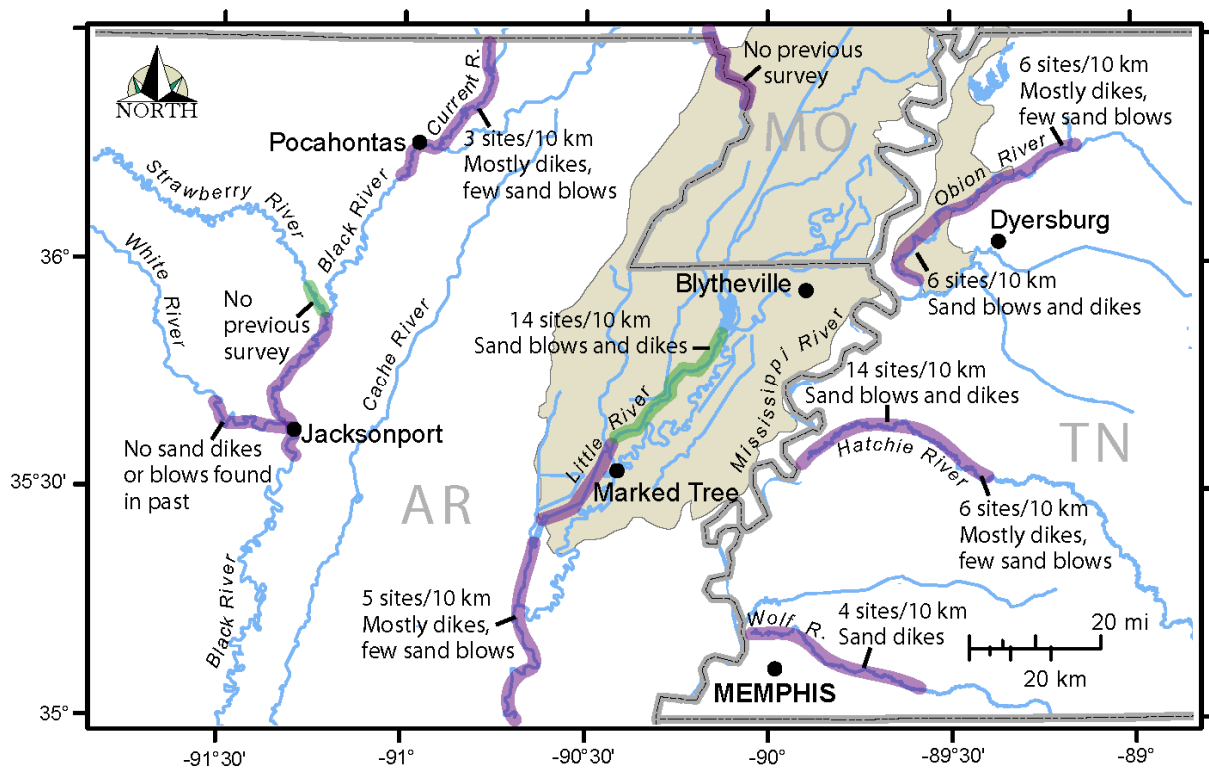


Figure 2 Map of paleoliquefaction study area in Arkansas and Tennessee. River segments identified in the NRC's letter of February 15, 2013 are delineated in purple. The NRC has conducted, and may continue, field work in these purple delineated river segments. Additional river segments where the NRC proposes to expand its field work are delineated in green.

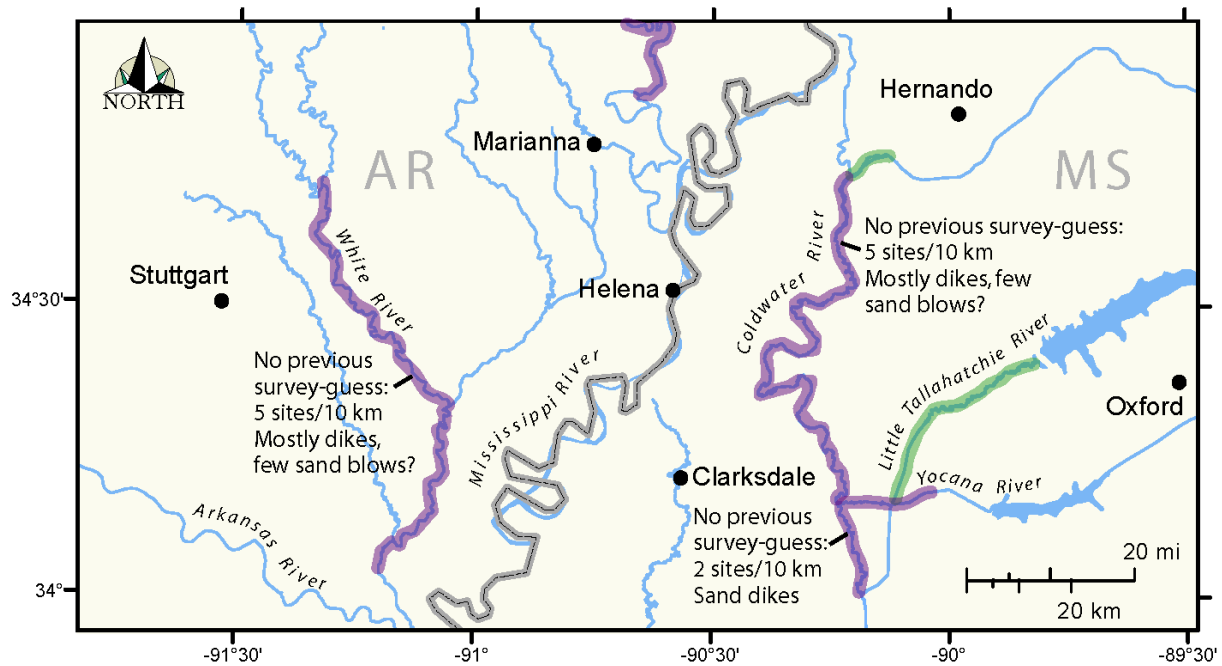


Figure 3 Map of paleoliquefaction study area Arkansas and Mississippi. River segments identified in the NRC’s letter of February 15, 2013 are delineated in purple. The NRC has conducted, and may continue, field work in these purple delineated river segments. Additional river segments where the NRC proposes to expand its field work are delineated in green.