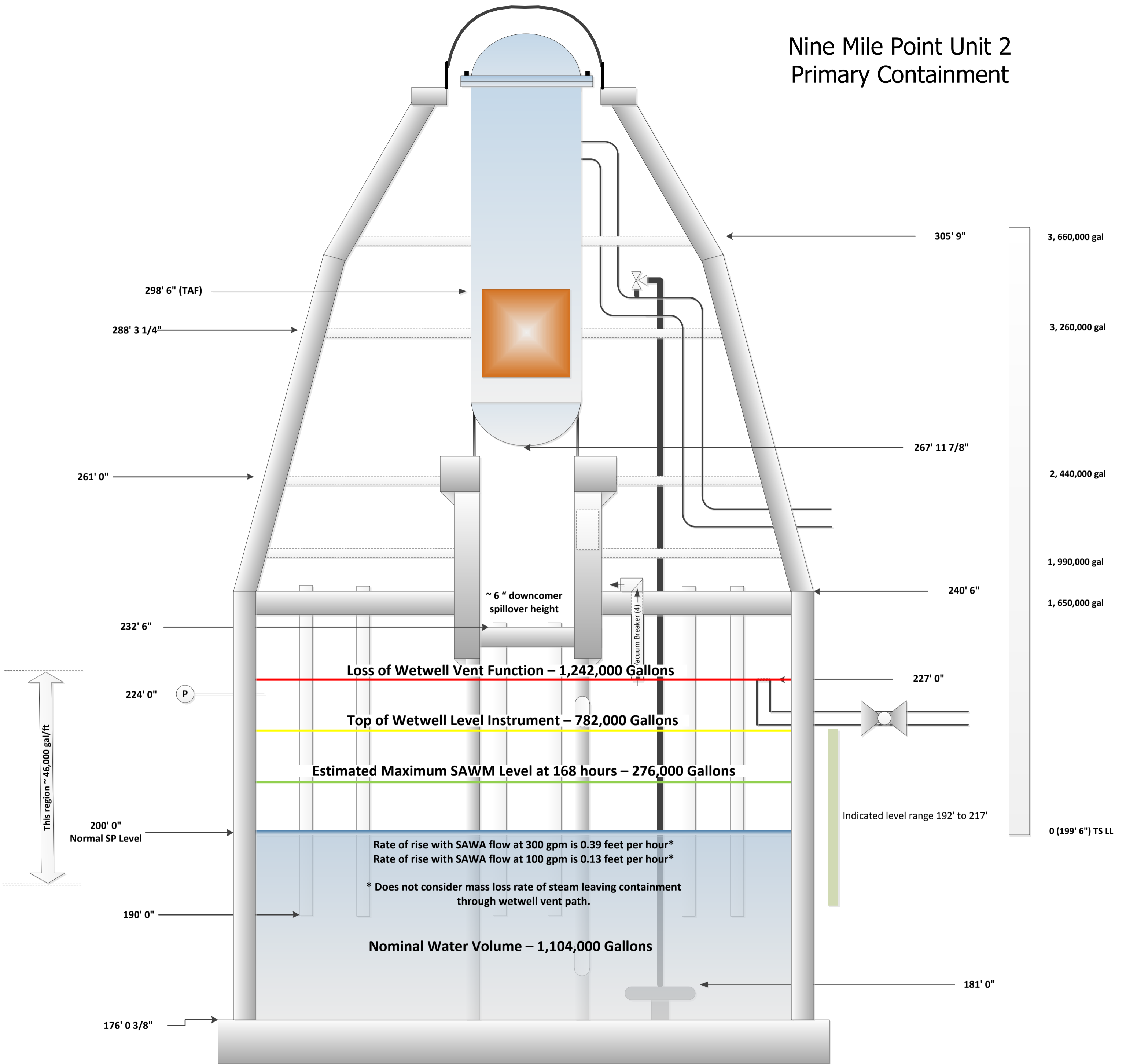
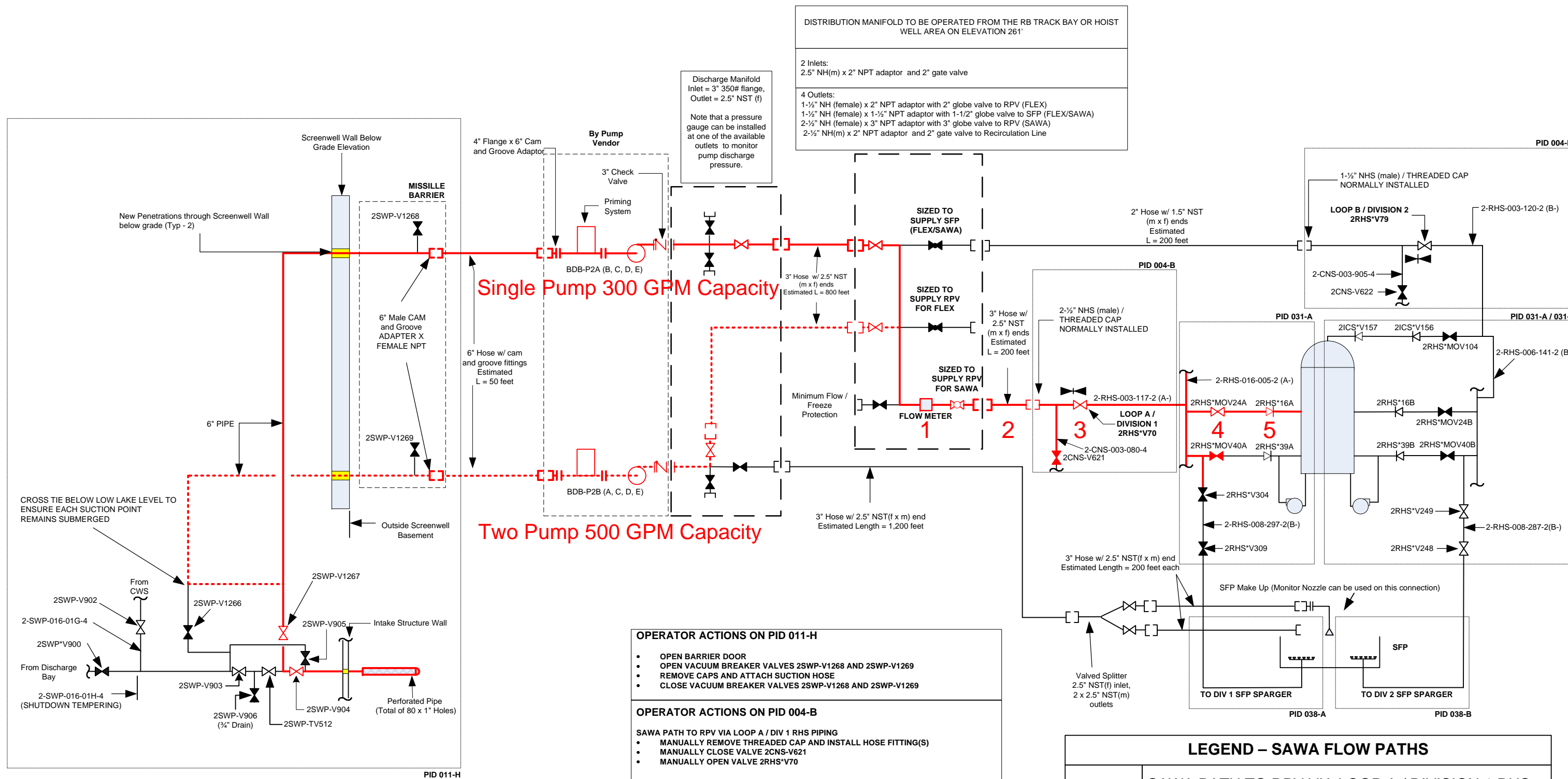


# Nine Mile Point Unit 2 Primary Containment





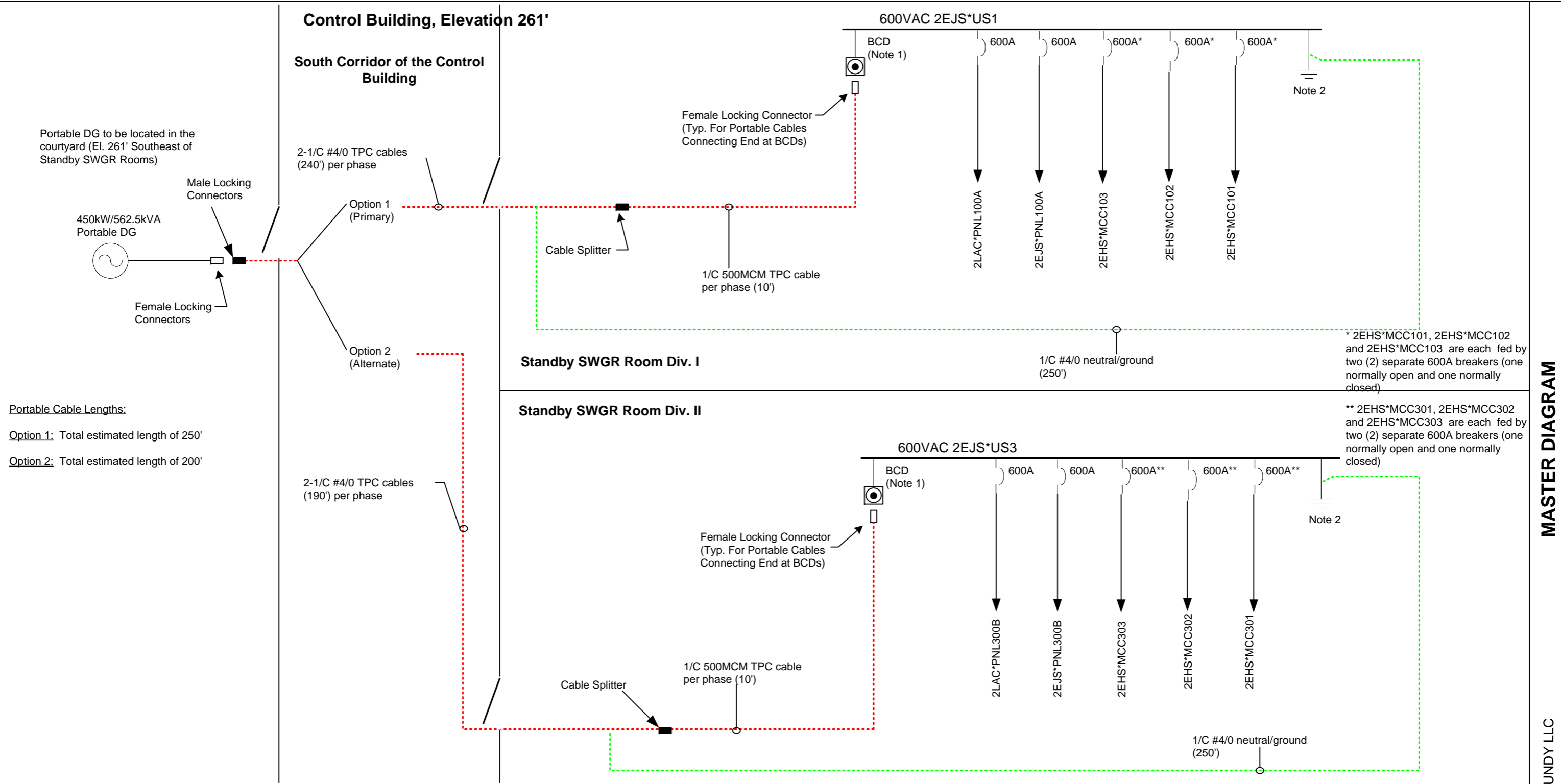
- OPERATOR ACTIONS ON PID 011-H**
- OPEN BARRIER DOOR
  - OPEN VACUUM BREAKER VALVES 2SWP-V1268 AND 2SWP-V1269
  - REMOVE CAPS AND ATTACH SUCTION HOSE
  - CLOSE VACUUM BREAKER VALVES 2SWP-V1268 AND 2SWP-V1269
- OPERATOR ACTIONS ON PID 004-B**
- SAWA PATH TO RPV VIA LOOP A / DIV 1 RHS PIPING
- MANUALLY REMOVE THREADED CAP AND INSTALL HOSE FITTING(S)
  - MANUALLY CLOSE VALVE 2CNS-V621
  - MANUALLY OPEN VALVE 2RHS\*V70
- OPERATOR ACTIONS ON PID 031-A / 031-B**
- SAWA PATH TO RPV
- Remote Manual – Open 2RHS\*MOV24A

LEGEND – SAWA FLOW PATHS	
	SAWA PATH TO RPV VIA LOOP A / DIVISION 1 RHS PIPING AND VALVE 2RHS*MOV24A
	TWO PUMP SAWA CONFIGURATION (OPTIONAL)

1. SAWA in-line flow meter
2. 200' of 3" hose
3. Local manual valve – Open
4. Power operated remote manual valve – Open
5. SAWA backflow prevention check valve - PCIV

NOTE ON FITTINGS:  
 NH = NHS = Threaded fitting sealed with gasket.  
 Typical fire hose connection  
 NPT = Threaded fitting where threads do the sealing.  
 Storz = Latching hose fitting

# NMP Unit 2 FLEX DG Connection



**Portable Cable Lengths:**  
**Option 1:** Total estimated length of 250'  
**Option 2:** Total estimated length of 200'

**LEGEND:**

- - - - - Portable Cable consist of three parallel sets of 2 – 1/C #4/0 AWG and 1/C 500 MCM TPC cables
- - - - - 1/C #4/0 AWG TPC Cables for portable DG system grounding

**Note:**

- 1.) Existing "future space", cubicle 5C will be used for connection via a Bus Connection Device (BCD). The BCD is non-safety related (NSR) and will be equipped with (1) TPC male locking receptacle, Model # PA22MR, per phase.
- 2.) Portable DG neutral to be grounded at the Switchgear neutral/ground bus.

**MASTER DIAGRAM**

**SARGENT & LUNDY LLC**