



U.S. NRC

UNITED STATES NUCLEAR REGULATORY COMMISSION

Protecting People and the Environment

Public Workshop on the Standardized Plant Analysis Risk (SPAR) Models

Peter Appignani, RES/DRA/PRAB

Peter.Appignani@nrc.gov

July 14, 2015



OPENING REMARKS

- Rich Correia, Division Director,
Division of Risk Analysis

GENERAL INFORMATION

- Security
- Fire exit and evacuation plans
 - All occupants must fully evacuate the building
- Ground Rules
- How to Obtain Your SPAR Model

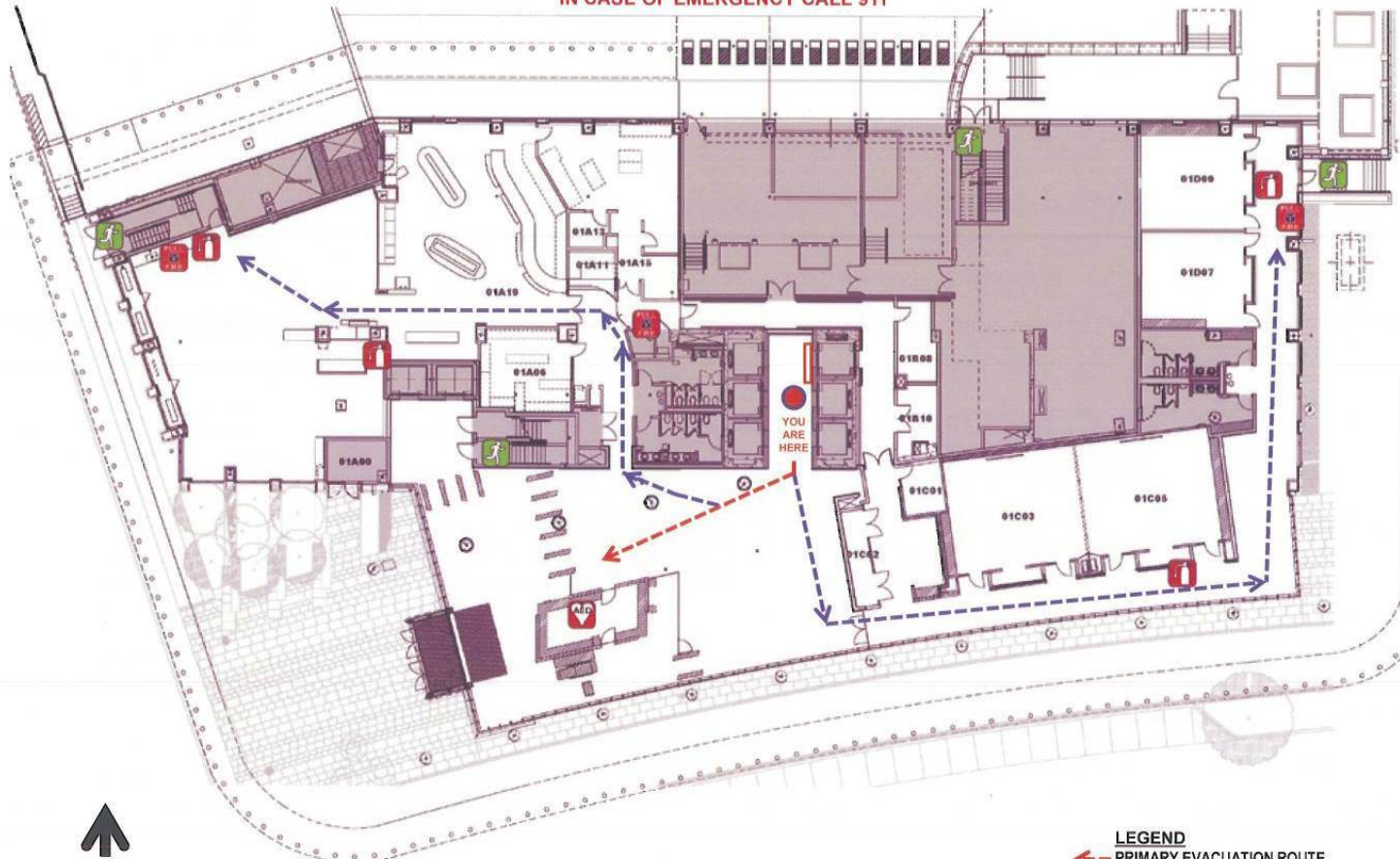
SECURITY



Fire exit and evacuation plans









- All occupants must fully evacuate the building and assemble outside
- Attendance Sheet will be used for accountability

**IN CASE OF FIRE USE STAIRWAY
 IN CASE OF EMERGENCY CALL 911**



FLOOR 1 THREE WHITE FLINT NORTH

11601 LANDSDOWN STREET NORTH BETHESDA, MD 20852

- LEGEND**
-  PRIMARY EVACUATION ROUTE
 -  SECONDARY EVACUATION ROUTE
 -  EGRESS STAIR
 -  FIRE ALARM PULL
 -  FIRE EXTINGUISHER CABINET
 -  AUTOMATED EXTERNAL DEFIBRILLATOR
 -  HOSE VALVE CABINET
 -  EVACUATION PLAN

GROUND RULES

- **As stated in the meeting announcement:**

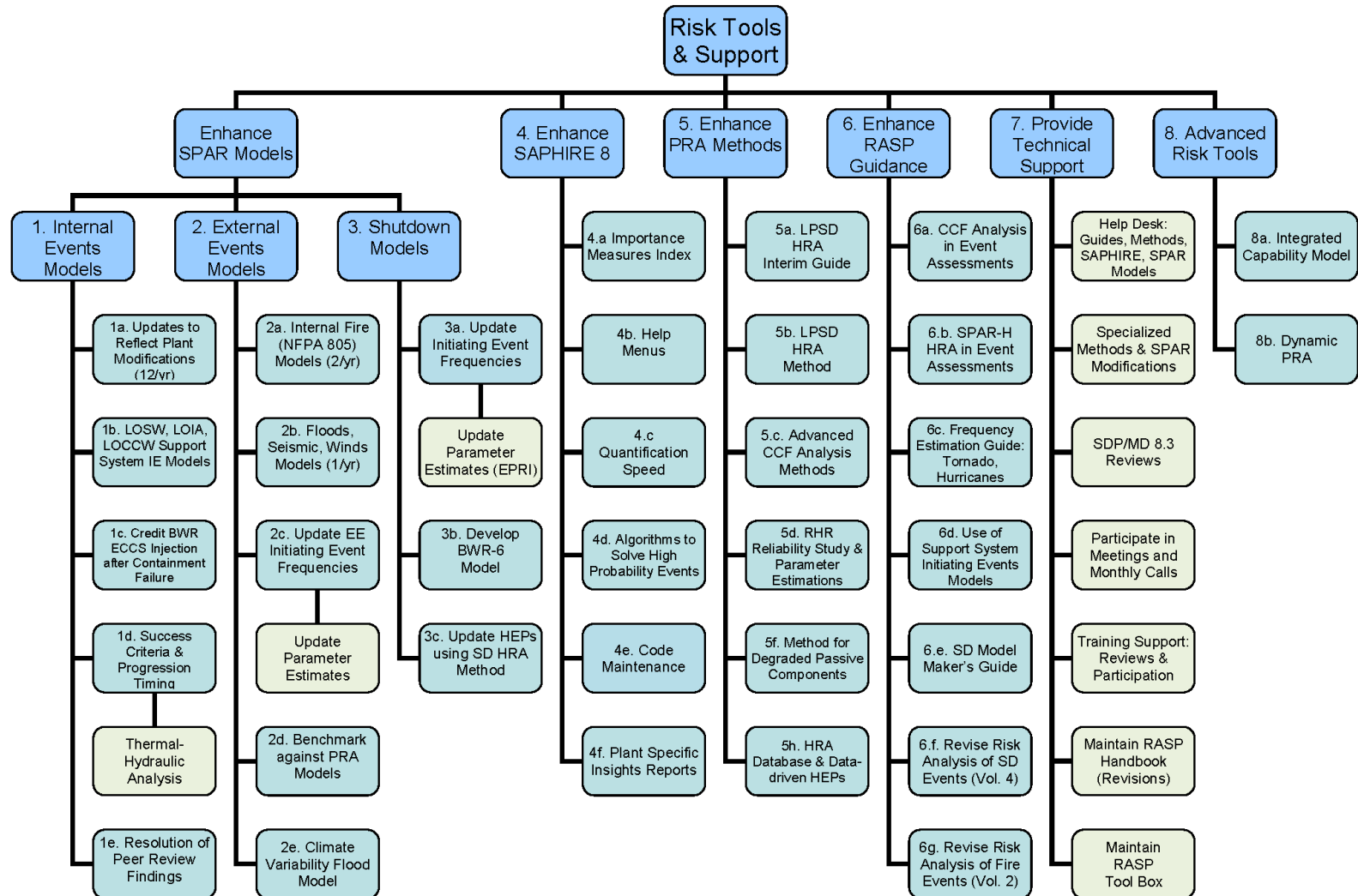
The public is invited to participate in these meetings by providing comments and asking questions throughout the meeting. Topics or questions relating to the Reactor Oversight Process (ROP), Significance Determination Process (SDP), Accident Sequence Precursor process (ASP) or other ongoing regulatory or inspection activity are beyond the scope of this meeting and will not be addressed. In addition, due to the sensitivity of individual nuclear power plant SPAR models, detailed modeling for specific SPAR models will not be discussed.

GROUND RULES

- RES provides the TOOLS



Risk Assessment Tools and Support





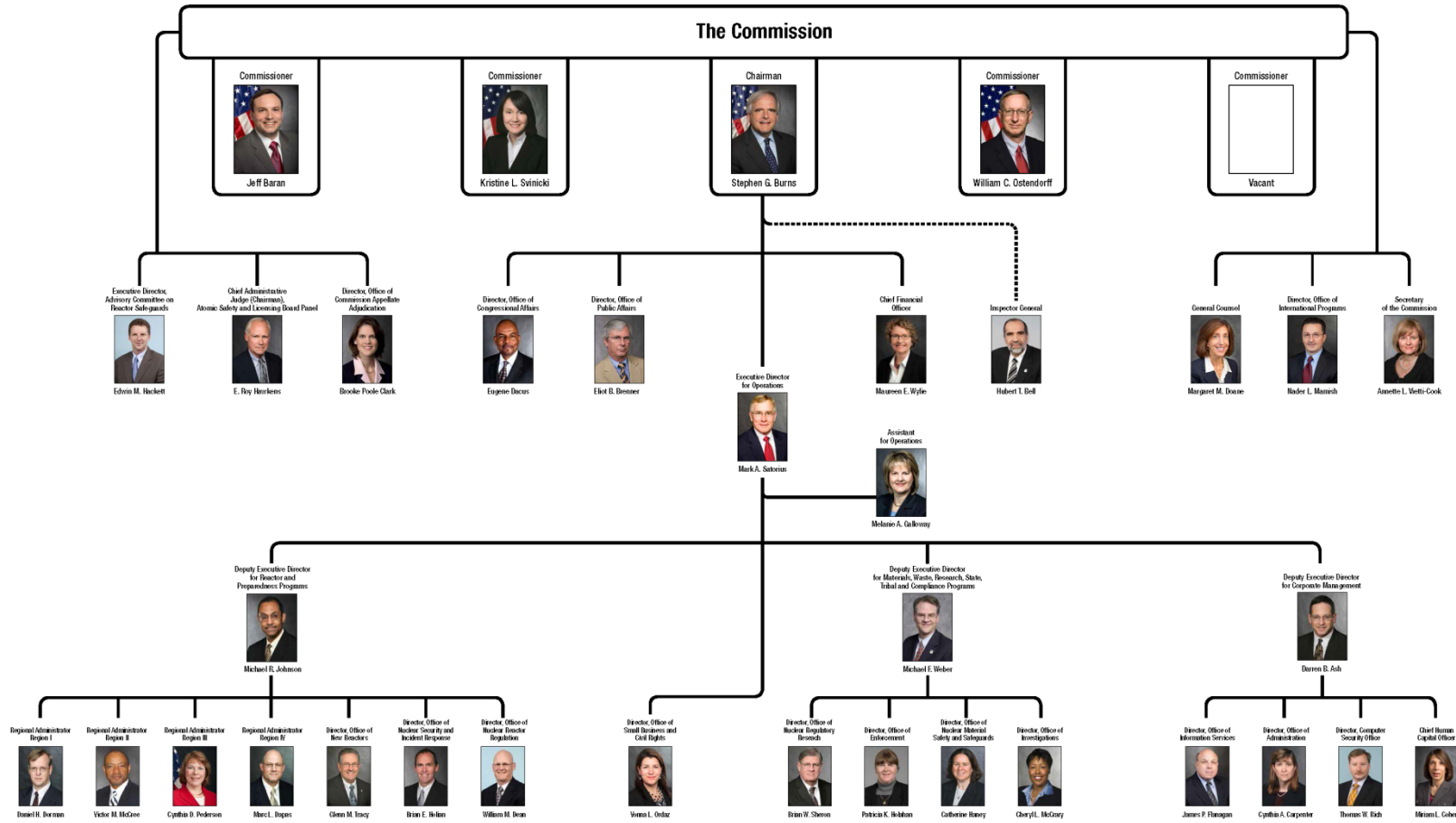
U.S.NRC
UNITED STATES NUCLEAR REGULATORY COMMISSION
Protecting People and the Environment

GROUND RULES

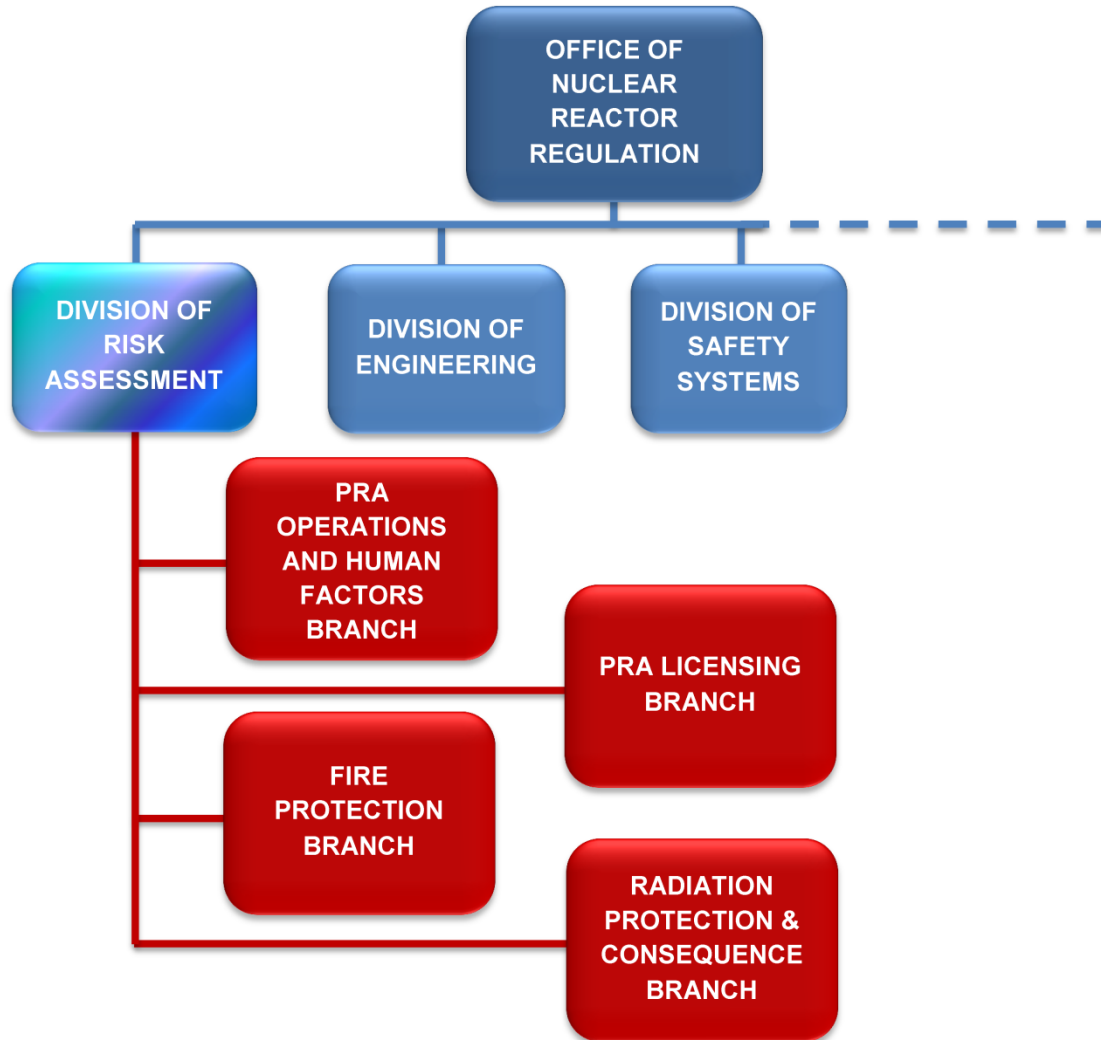
- Others perform the ANALYSIS

RISK

U.S. Nuclear Regulatory Commission

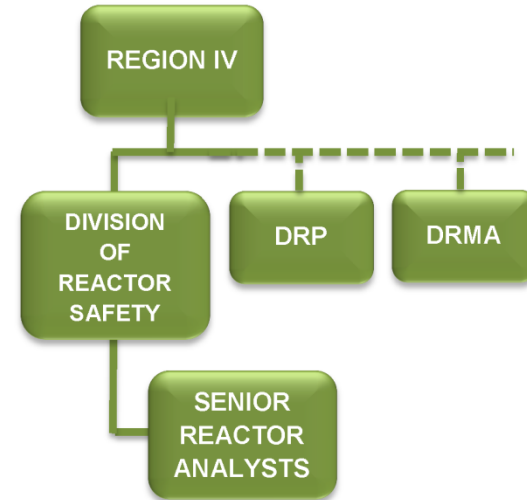
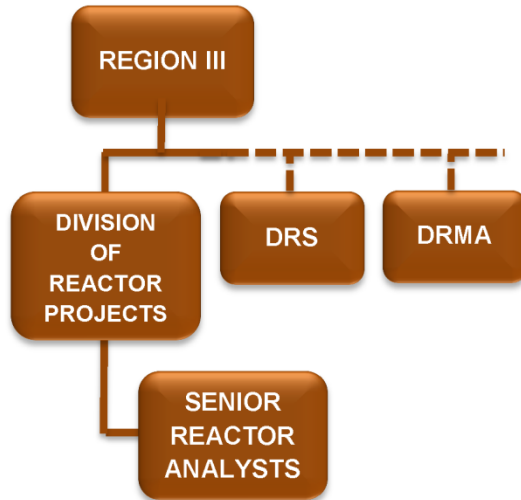
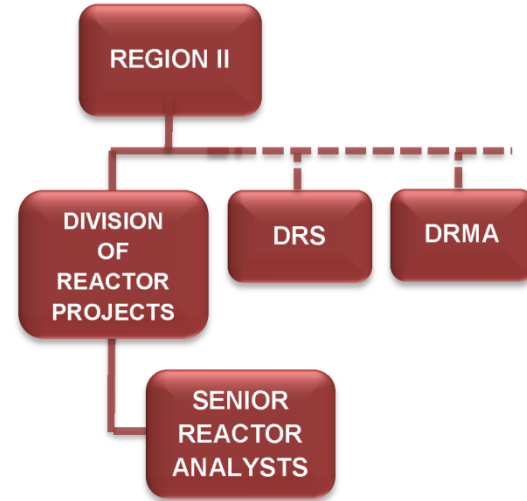
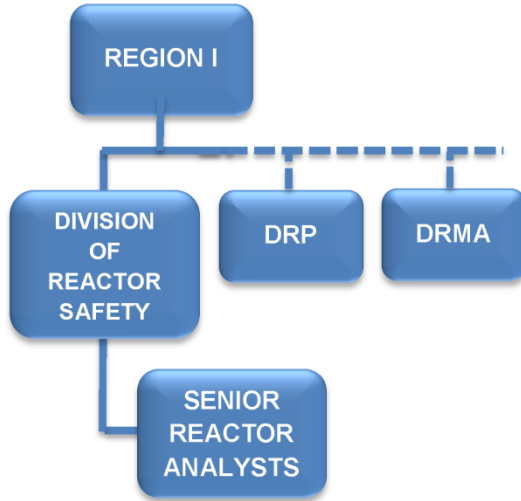


March 17, 2016



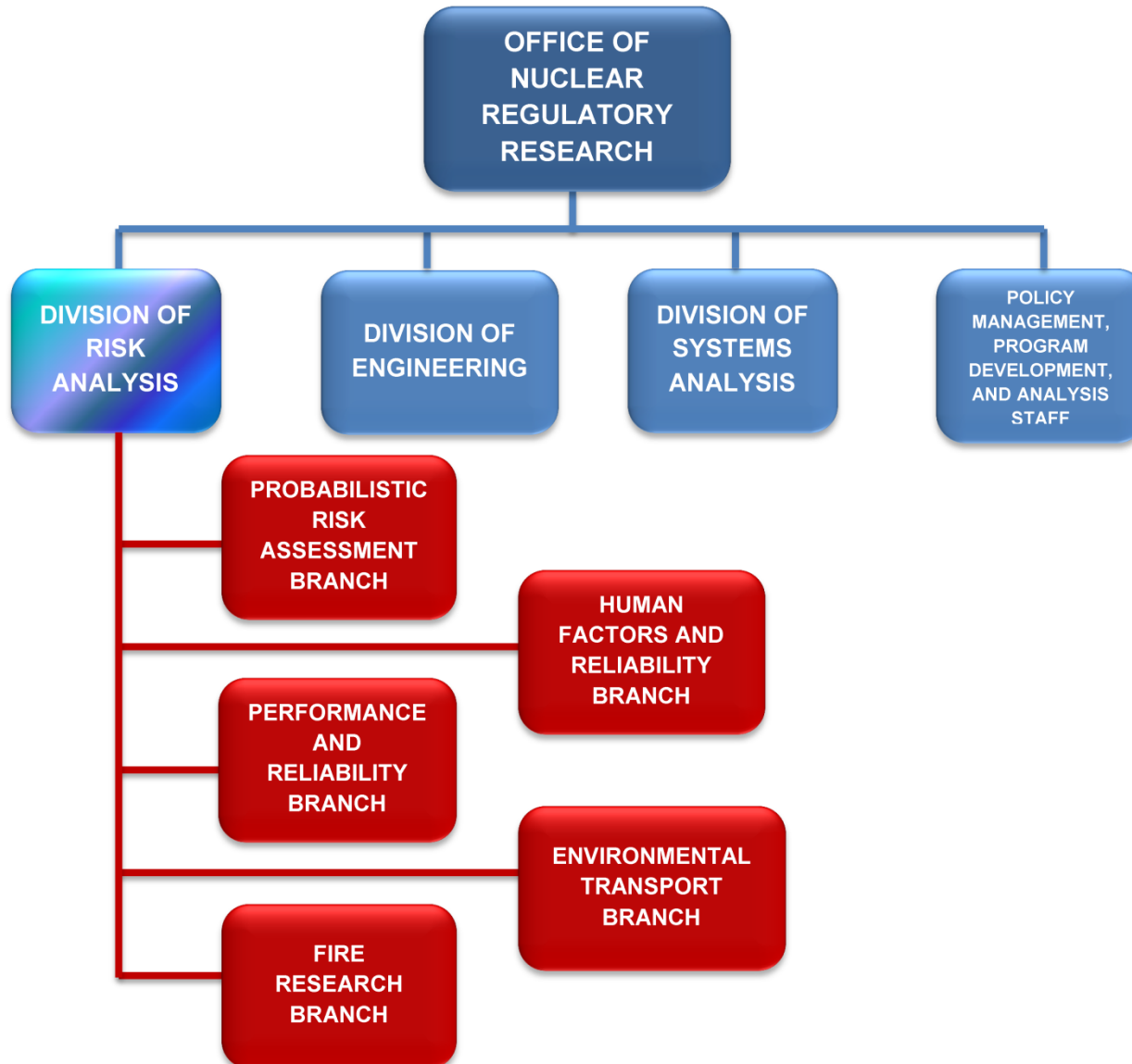
REGIONS

SENIOR REACTOR ANALYSTS



**OFFICE OF NUCLEAR REGULATORY RESEARCH (RES)
DIVISION OF RISK ANALYSIS (DRA)**

<http://www.nrc.gov/about-nrc/organization/resfuncdesc.html#dra>



How to Obtain Your SPAR Model

**SPAR Models
will only
be provided to
the Licensee!**

How to Obtain Your SPAR Model

- Send me an email at peter.appignani@nrc.gov
- Provide the following information
 - Name
 - Title
 - Corporate Address: Will be verified against our Roster of Utilities
 - Phone number
 - The names of the plants corresponding to the models you are requesting.

How to Obtain Your SPAR Model

- You will receive a CD-ROM with the model(s)
 - Copy the file(s) to your hard drive.
 - Uncompress the file
- *We expect you to withhold the SPAR models from public disclosure*

How to Obtain Your SPAR Model

- Documentation is included with the model (see the SHARE folder)
 - Report documenting the model
 - Acceptance Criteria Discussion
 - Quick look at the difference between your PRA and the SPAR model
 - 2 Excel files Plant name-PSA-Data & Plant name-SPAR-Data
 - Cutset level comparison
 - Used for detailed comparison between the SPAR model and the licensee PRA
 - ***Limited by the quality of the information we have on the licensee PRA***
 - ***We encourage licensees to provide us with up-to-date PRA information***